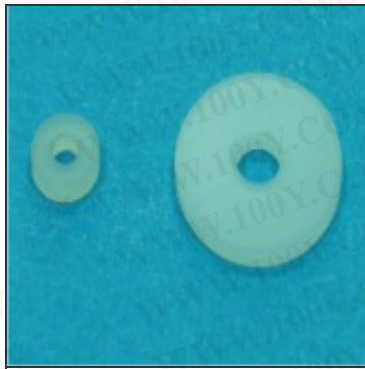
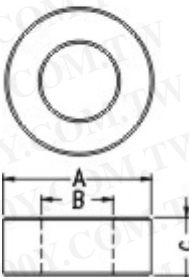
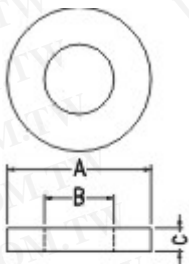


勝特力材料 886-3-5753170
 勝特力电子(上海) 86-21-54151736
 勝特力电子(深圳) 86-755-83298787
[Http://www.100y.com.tw](http://www.100y.com.tw)

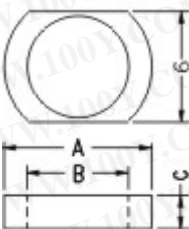


WS

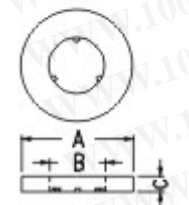
MATERIAL:NYLON66(UL)/NYLON
 6(UL)
 UINIT:mm
 用途：做為零件之墊片。



ONLY FOR
 WS6-31-2(VO)



ONLY FOR
 WS8-55-18



ONLY FOR
 WS3.25-0.9

PART NO	A	B	C	
WS2.1-0.8	4.5	2.1	0.8	
WS2.5-0.5		2.5	0.5	
WS2.5-0.5S	4.0	2.5	0.5	
WS2.1-2	5.0	2.1	2.0	
★ WS5-2.1-1		3.1	1.0	
WS5-3.1-1	5.6	3.73	0.3	
WS3.7-0.3		3.8	0.5	
WS3.8-0.5	6.5	3.8	0.5	
WS4-1	6.8	4.2	1.0	
WS3-1	7.0	3.0	1.0	
WS3.7-0.5	7.1	3.7	0.5	
WS3.5-0.5	7.5	3.5	0.5	
WS4-5	8.0	4.1	0.8	
WS4-8			1.0	
WS4-10			1.5	
WS4-15			2.0	
WS4-20			4.6	0.3
WS4-3			5.0	5.0
WS5-5	5.2	0.5		
WS2-1.5	8.8	2.0	1.5	
WS4.5-0.5	9.0	4.5	0.5	
WS2.2-12	3.7	2.2	1.2	
★ WS3-2-1		2.2	1.0	
WS2.5-10	5.0	2.5	1.1	
WS2-0.5	6.0	2.5	0.5	
WS3-1.5		3.0	1.5	
WS2.5-1	9.0	2.5	1.0	
WS5-1	10.0	5.2	2.0	
WS5-2		6.4	0.8	
WS6-0.8	12.8	7.1	1.0	
WS7-1		10.3	5.0	
WS10-5	15.0	10.0	0.8	
WS10-0.8		10.0	1.5	
WS10-1.5		11.4	3.2	
WS-16-11-32	18.0	8.2	1.0	
WS8-1	18.0	8.2	1.0	
WS5-1.2	19.5	5.0	1.2	
WS10-3	20.7	10.0	3.0	
WS19.1-0.5	21.8	19.1	0.5	
WS13-2	23.0	13.0	2.0	
WS8-3	24.0	8.05	3.0	
WS40-1.5	45.5	40.0	1.5	
WS3-5(6)	6.0	3.1	0.5	
WS3-2			2.0	
WS3-3.4			3.4	
WS3-5			0.5	
WS3-8			0.8	

PART NO	A	B	C
WS3-10	8.0	3.1	1.0
WS3-15			1.5
WS3-20			2.0
WS12-5-2	12.0	5.0	2.0
WS30-6-1.5	30.0	6.0	1.5
WS42-19-05	4.2	1.9	0.5
WS45-2-08	4.5	2.0	0.8
WS6-23-08	6.0	2.3	3.0
WS6-2.7-3		2.7	2.35
★ WS6-31-2V0		2.9	0.5
WS6-31-05		3.1	1.0
WS6-3.8-1		3.8	1.5
WS6-38-15	7.0	3.0	0.8
WS7-3-0.8		3.1	0.5
WS7-3.1-0.5		5.0	1.6
WS7-5-1.6	8.0	3.1	1.0
WS8-3.1-1		3.6	0.8
WS8-3.6-08		5.0	1.0
WS8-5-1		5.5	1.8
★ WS8-55-18B	9.6	4.4	0.8
WS96-44-08	9.6	4.4	0.8
★ WS12779215	12.7	7.9	1.57
★ WS53205PBT	5.0	3.2	0.5
★ WS14-11-1	14.7	11.5	1.0
★ WS63-42-15	6.3	4.2	1.55
★ WS4-1.6POM	6.5	4.0	1.65
★ WS4-2.5POM			2.5
★ WS115-35-4	11.5	3.5	4.0
★ WS3.25-0.9	6.5	3.25	0.9
★ WS4.5-2.1-09	4.5	2.1	1.5
★ WS5.2111.5	11.0	5.2	3.0
★ WS8-3N	24.0	8.05	0.8
★ WS10-5.2-0.8	10.0	5.2	1.52
★ WS11785PPS	11.0	7.0	2.0
★ WS1276415B	12.7	6.48	1.52
★ WS1276420B			2.0