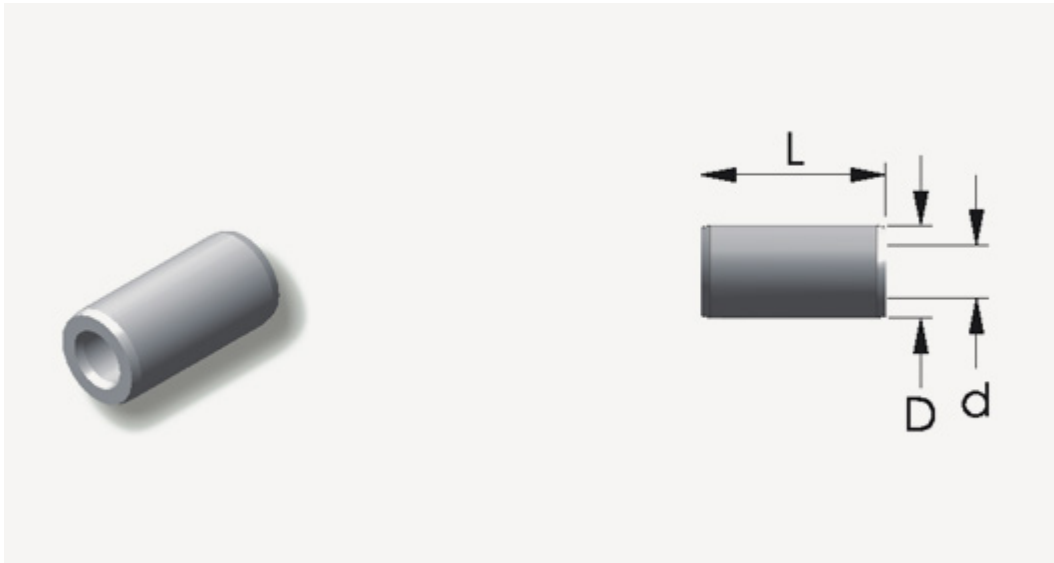


Parallel Connectors



❖ NON-INSULATED PARALLEL CONNECTORS

Feature:

1. MAXIMUM ELECTRICAL RATING: 600 VOLTS
2. TERMINAL MATERIAL: COPPER TUBE
3. PLATING: ELECTRO TIN PLATED

勝特力材料 886-3-5753170
勝特力电子(上海) 86-21-54151736
勝特力电子(深圳) 86-755-83298787
[Http://www.100y.com.tw](http://www.100y.com.tw)

Specification:

| WIRE RANGE AWG / mm ² | ITEM NO. | DIMENSIONS inch (mm) | | |
|--------------------------------------|----------|----------------------|------------|------------|
| | | L | d | D |
| 22~16 AWG 0.5~1.5 mm ² | P1N | .315 (8.0) | .067 (1.7) | .130 (3.3) |
| 14~16 AWG 1.5~2.5 mm ² | P2N | .315 (8.0) | .091 (2.3) | .157 (4.0) |
| 12~10 AWG 4~6 mm ² | P5N | .335 (8.5) | .142 (3.6) | .217 (5.5) |