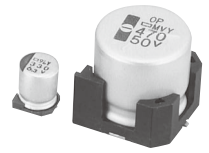
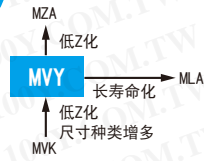


ALCHIP™ - MVY 系列

- 表面安装
- 低Z
- 耐清洗
- RoHS指令适应品

- 额定电压 6.3 ~ 100V。
- 低阻抗、保证 105°C 1,000 ~ 5,000 小时。
- 最适合 DC-DC 转换器。
- 产品尺寸：φ4×5.2L ~ φ18×21.5L。



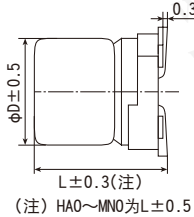
规格表

项目	性能										
工作温度范围	-55~+105°C (6.3~63V <sub>dc</sub> )    -40~+105°C (80~100V <sub>dc</sub> )										
额定电压范围	6.3~100V <sub>dc</sub>										
静电容量容许差	±20%(M) (20°C、120Hz)										
漏电流	I ≤ 0.01CV 或者 3μA 中任意一个较大值 I: 漏电流(μA)、C: 静电容量(μF)、额定电压(V <sub>dc</sub> ) (20°C、2分值)										
损失角正切值 (tan δ)	额定电压 (V <sub>dc</sub> )	6.3V	10V	16V	25V	35V	50V	63V	80V	100V	(20°C、120Hz)
	tan δ (Max.)	D55~F80	0.24	0.20	0.16	0.14	0.12	0.12	—	—	
		HA0、JA0	0.28	0.24	0.20	0.16	0.14	0.12	—	—	
	KE0~MNO	0.26	0.22	0.18	0.16	0.14	0.12	0.14	0.10	0.10	
但是, 超过1,000μF 的每增加1,000μF tan δ 设定增加0.02。 (20°C、120Hz)											
温度特性 (阻抗比 Max右表值)	额定电压 (V <sub>dc</sub> )	6.3V	10V	16V	25V	35V	50V	63V	80V	100V	(120Hz)
	Z(-40°C) / Z(+20°C)	D55~JA0	3	2	2	2	2	2	—	—	
		KE0~MNO	10	8	6	4	3	3	3	3	
耐久性	在105°C环境中, 连续加载规定时间的额定电压后, 待温度恢复到20°C进行测量时, 应满足以下要求。										
	规定时间	D55~F80 : 1,000小时 HA0, JA0 : 2,000小时 KE0~MNO : 5,000小时									
	额定电压 (V <sub>dc</sub> )	6.3V <sub>dc</sub> (D55~JA0)					6.3~100V <sub>dc</sub>				
	静电容量变化率	≤ 初始值的±30%					≤ 初始值的±20%				
	损失角正切值	≤ 初始规格值的300%					≤ 初始规格值的200%				
高温无负荷特性	在105°C环境中, 无负荷放置1,000小时后待温度恢复到20°C, 进行试验前处理 (JIS C 5101-4 4.1项) 后, 应满足以下要求。										
	额定电压 (V <sub>dc</sub> )	6.3V <sub>dc</sub> (D55~JA0)					6.3~100V <sub>dc</sub>				
	静电容量变化率	≤ 初始值的±30%					≤ 初始值的±20%				
	损失角正切值	≤ 初始规格值的300%					≤ 初始规格值的200%				
	漏电流	≤ 初始规格值					≤ 初始规格值				

尺寸图 (CE32形) [mm]

● 端子代码: A

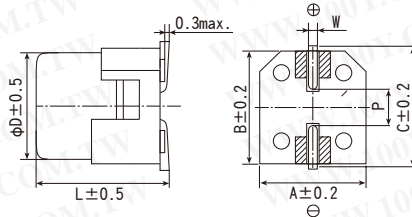
● 尺寸代码: D55~MNO



(注) HA0~MNO为L ± 0.5

● 端子代码: G

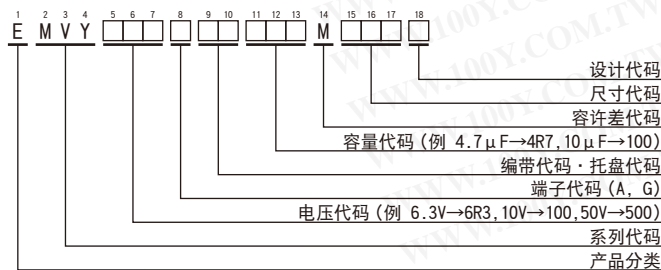
● 尺寸代码: LHO~MNO (带辅助端子)



▨内: 辅助端子

尺寸代码	D	L	A	B	C	W	P
D55	4	5.2	4.3	4.3	5.1	0.5~0.8	1.0
E55	5	5.2	5.3	5.3	5.9	0.5~0.8	1.4
F55	6.3	5.2	6.6	6.6	7.2	0.5~0.8	1.9
F61	6.3	5.8	6.6	6.6	7.2	0.5~0.8	1.9
F80	6.3	7.7	6.6	6.6	7.2	0.5~0.8	1.9
HA0	8	10.0	8.3	8.3	9.0	0.7~1.1	3.1
JA0	10	10.0	10.3	10.3	11.0	0.7~1.1	4.5
KE0	12.5	13.5	13.0	13.0	13.7	1.0~1.3	4.2
KG5	12.5	16.0	13.0	13.0	13.7	1.0~1.3	4.2
LHO	16	16.5	17.0	17.0	18.0	1.0~1.3	6.5
LNO	16	21.5	17.0	17.0	18.0	1.0~1.3	6.5
MHO	18	16.5	19.0	19.0	20.0	1.0~1.3	6.5
MNO	18	21.5	19.0	19.0	20.0	1.0~1.3	6.5

产品型号体系



产品型号代码的详细介绍请参考「产品型号表示方法(贴片型)」。

标示

标示例(D55~JA0)  
6.3V100μF



标示例(KE0~MNO)  
16V1,000μF



◆标准品一览表

□ 内的产品 (80 / 100V<sub>dc</sub>) 不能进行基板清洗。

VV (V <sub>dc</sub> )	Cap (μF)	尺寸代码	阻抗 (Ω <sub>max</sub> /20°C, 100kHz)	额定纹波电流 (mA <sub>rms</sub> /105°C, 100kHz)	产品型号	VV (V <sub>dc</sub> )	Cap (μF)	尺寸代码	阻抗 (Ω <sub>max</sub> /20°C, 100kHz)	额定纹波电流 (mA <sub>rms</sub> /105°C, 100kHz)	产品型号			
6.3	22	D55	3.0	60	EMVY6R3ADA220MD55G	25	330	HA0	0.30	450	EMVY250ADA331MHA0G			
	33	E55	1.8	95	EMVY6R3ADA330ME55G		470	JA0	0.15	670	EMVY250ADA471MJA0G			
	47	E55	1.8	95	EMVY6R3ADA470ME55G		1,000	LH0	0.054	1,260	EMVY250□DA102MLH0S			
	100	F55	1.0	140	EMVY6R3ADA101MF55G		1,000	MH0	0.054	1,350	EMVY250□DA102MMH0S			
	220	F55	1.0	140	EMVY6R3ADA221MF55G		2,200	LN0	0.038	1,630	EMVY250□DA222MLN0S			
	330	F80	0.34	280	EMVY6R3ADA331MF80G		2,200	MN0	0.038	1,750	EMVY250□DA222MMN0S			
	470	HA0	0.30	450	EMVY6R3ADA471MHA0G		3,300	MN0	0.038	1,750	EMVY250□DA332MMN0S			
	680	HA0	0.30	450	EMVY6R3ADA681MHA0G		35	4.7	D55	3.0	60	EMVY350ADA4R7TMD55G		
	1,000	HA0	0.30	450	EMVY6R3ADA102MHA0G			10	E55	1.8	95	EMVY350ADA100ME55G		
	1,500	JA0	0.15	670	EMVY6R3ADA152MJA0G			22	F55	1.0	140	EMVY350ADA220MF55G		
	2,200	KE0	0.070	820	EMVY6R3ARA222MKE0S			33	F55	1.0	140	EMVY350ADA330MF55G		
	2,200	LH0	0.054	1,260	EMVY6R3□DA222MLH0S			47	F55	1.0	140	EMVY350ADA470MF55G		
	3,300	KG5	0.060	950	EMVY6R3ARA332MKG5S			47	F61	1.0	140	EMVY350ADA470MF61G		
	3,300	MH0	0.054	1,350	EMVY6R3□DA332MMH0S			68	F80	0.34	280	EMVY350ADA680MF80G		
	4,700	LN0	0.038	1,630	EMVY6R3□DA472MLN0S			100	HA0	0.30	450	EMVY350ADA101MHA0G		
	4,700	MH0	0.054	1,350	EMVY6R3□DA472MMH0S			220	HA0	0.30	450	EMVY350ADA221MHA0G		
	6,800	LN0	0.038	1,630	EMVY6R3□DA682MLN0S			330	JA0	0.15	670	EMVY350ADA331MJA0G		
	6,800	MN0	0.038	1,750	EMVY6R3□DA682MMN0S			470	KE0	0.070	820	EMVY350ARA471MKE0S		
8,200	MN0	0.038	1,750	EMVY6R3□DA822MMN0S	470	LH0		0.054	1,260	EMVY350□DA471MLH0S				
10	22	E55	1.8	95	EMVY100ADA220ME55G	1,000		LH0	0.054	1,260	EMVY350□DA102MLH0S			
	33	E55	1.8	95	EMVY100ADA330ME55G	1,000		MH0	0.054	1,350	EMVY350□DA102MMH0S			
	47	F55	1.0	140	EMVY100ADA470MF55G	2,200		MN0	0.038	1,750	EMVY350□DA222MMN0S			
	100	F55	1.0	140	EMVY100ADA101MF55G	50		1.0	D55	5.0	30	EMVY500ADA1R0MD55G		
	220	F80	0.34	280	EMVY100ADA221MF80G			2.2	D55	5.0	30	EMVY500ADA2R2MD55G		
	330	HA0	0.30	450	EMVY100ADA331MHA0G			3.3	D55	5.0	30	EMVY500ADA3R3MD55G		
	470	HA0	0.30	450	EMVY100ADA471MHA0G		4.7	E55	3.0	50	EMVY500ADA4R7ME55G			
	680	JA0	0.15	670	EMVY100ADA681MJA0G		10	F55	2.0	70	EMVY500ADA100MF55G			
	1,000	JA0	0.15	670	EMVY100ADA102MJA0G		22	F55	2.0	70	EMVY500ADA220MF55G			
	2,200	KG5	0.060	950	EMVY100ARA222MKG5S		33	F80	0.60	170	EMVY500ADA330MF80G			
	2,200	LH0	0.054	1,260	EMVY100□DA222MLH0S		47	F80	0.60	170	EMVY500ADA470MF80G			
	3,300	LH0	0.054	1,260	EMVY100□DA332MLH0S		68	HA0	0.60	300	EMVY500ADA680MHA0G			
	3,300	MH0	0.054	1,350	EMVY100□DA332MMH0S		100	HA0	0.60	300	EMVY500ADA101MHA0G			
	4,700	LN0	0.038	1,630	EMVY100□DA472MLN0S		220	JA0	0.30	500	EMVY500ADA221MJA0G			
	4,700	MN0	0.038	1,750	EMVY100□DA472MMN0S		330	KE0	0.11	650	EMVY500ARA331MKE0S			
	6,800	MN0	0.038	1,750	EMVY100□DA682MMN0S		330	LH0	0.087	900	EMVY500□DA331MLH0S			
	16	10	D55	3.0	60		EMVY160ADA100MD55G	470	LH0	0.087	900	EMVY500□DA471MLH0S		
		22	E55	1.8	95		EMVY160ADA220ME55G	470	MH0	0.087	1,060	EMVY500□DA471MMH0S		
33		F55	1.0	140	EMVY160ADA330MF55G		1,000	MN0	0.050	1,520	EMVY500□DA102MMN0S			
47		F55	1.0	140	EMVY160ADA470MF55G		63	68	KE0	0.19	500	EMVY630ARA680MKE0S		
100		F55	1.0	140	EMVY160ADA101MF55G			100	KE0	0.19	500	EMVY630ARA101MKE0S		
220		F80	0.34	280	EMVY160ADA221MF80G	220		KE0	0.19	500	EMVY630ARA221MKE0S			
330		HA0	0.30	450	EMVY160ADA331MHA0G	220		LH0	0.12	845	EMVY630□DA221MLH0S			
470		HA0	0.30	450	EMVY160ADA471MHA0G	330		LH0	0.12	845	EMVY630□DA331MLH0S			
680		JA0	0.15	670	EMVY160ADA681MJA0G	330		MH0	0.12	905	EMVY630□DA331MMH0S			
1,000		KE0	0.070	820	EMVY160ARA102MKE0S	470		LN0	0.085	1,100	EMVY630□DA471MLN0S			
1,000		LH0	0.054	1,260	EMVY160□DA102MLH0S	470		MH0	0.12	905	EMVY630□DA471MMH0S			
2,200		LH0	0.054	1,260	EMVY160□DA222MLH0S	80		100	KE0	0.33	450	EMVY800ARA101MKE0S		
2,200		MH0	0.054	1,350	EMVY160□DA222MMH0S			220	KG5	0.26	550	EMVY800ARA221MKG5S		
3,300		LN0	0.038	1,630	EMVY160□DA332MLN0S			330	LN0	0.16	900	EMVY800□DA331MLN0S		
3,300		MH0	0.054	1,350	EMVY160□DA332MMH0S			330	MH0	0.24	700	EMVY800□DA331MMH0S		
4,700		MN0	0.038	1,750	EMVY160□DA472MMN0S			470	MN0	0.16	950	EMVY800□DA471MMN0S		
25		10	E55	1.8	95			EMVY250ADA100ME55G	100	47	KE0	0.33	450	EMVY101ARA470MKE0S
		22	F55	1.0	140	EMVY250ADA220MF55G		68		KE0	0.33	450	EMVY101ARA680MKE0S	
	33	F55	1.0	140	EMVY250ADA330MF55G	100		KE0		0.33	450	EMVY101ARA101MKE0S		
	47	F55	1.0	140	EMVY250ADA470MF55G	100		LH0		0.24	650	EMVY101□DA101MLH0S		
	100	F80	0.34	280	EMVY250ADA101MF80G	220		LN0		0.16	900	EMVY101□DA221MLN0S		
	220	HA0	0.30	450	EMVY250ADA221MHA0G	220	MH0	0.24		700	EMVY101□DA221MMH0S			
25	330	HA0	0.30	450	EMVY250ADA331MHA0G	100	470	MN0	0.16	950	EMVY101□DA331MMN0S			
	470	HA0	0.30	450	EMVY250ADA471MHA0G		100	47	KE0	0.33	450	EMVY101ARA470MKE0S		
	680	JA0	0.15	670	EMVY250ADA681MJA0G			68	KE0	0.33	450	EMVY101ARA680MKE0S		
	1,000	KE0	0.070	820	EMVY250ARA102MKE0S			100	KE0	0.33	450	EMVY101ARA101MKE0S		
	1,000	LH0	0.054	1,260	EMVY250□DA102MLH0S			100	LH0	0.24	650	EMVY101□DA101MLH0S		
	2,200	LH0	0.054	1,260	EMVY250□DA222MLH0S			220	LN0	0.16	900	EMVY101□DA221MLN0S		
	2,200	MH0	0.054	1,350	EMVY250□DA222MMH0S			220	MH0	0.24	700	EMVY101□DA221MMH0S		
	3,300	LN0	0.038	1,630	EMVY250□DA332MLN0S			470	MN0	0.16	950	EMVY101□DA331MMN0S		
	3,300	MH0	0.054	1,350	EMVY250□DA332MMH0S			100	47	KE0	0.33	450	EMVY101ARA470MKE0S	
	4,700	MN0	0.038	1,750	EMVY250□DA472MMN0S				68	KE0	0.33	450	EMVY101ARA680MKE0S	
	25	10	E55	1.8	95				EMVY250ADA100ME55G	100	KE0	0.33	450	EMVY101ARA101MKE0S
		22	F55	1.0	140				EMVY250ADA220MF55G	100	LH0	0.24	650	EMVY101□DA101MLH0S
		33	F55	1.0	140				EMVY250ADA330MF55G	220	LN0	0.16	900	EMVY101□DA221MLN0S
		47	F55	1.0	140				EMVY250ADA470MF55G	220	MH0	0.24	700	EMVY101□DA221MMH0S
		100	F80	0.34	280			EMVY250ADA101MF80G	470	MN0	0.16	950	EMVY101□DA331MMN0S	
		220	HA0	0.30	450			EMVY250ADA221MHA0G						

□ 内为端子代码。