

Digimatic Indicators/ Dial Indicators

Pages 172 — 235

Dial Test Indicators

Pages 236 — 244

Gage Heads

Pages 245 — 268

勝特力材料 886-3-5753170
勝特力电子(上海) 86-21-54151736
勝特力电子(深圳) 86-755-83298787
[Http://www.100y.com.tw](http://www.100y.com.tw)

IDF Series Absolute Digimatic Indicators

SERIES 543 — with Back-lit LCD Screen



SPC
ABSOLUTE

勝特力材料 886-3-5753170
勝特力电子(上海) 86-21-54151736
勝特力电子(深圳) 86-755-83298787
[Http://www.100y.com.tw](http://www.100y.com.tw)

FEATURES

- The external power supply eliminates the need to replace batteries for extended continuous operation.
- GO/±NG judgment is performed by setting the upper and lower tolerances. If a judgment result is out of tolerance, the display backlighting changes from green to red, so tolerance judgment can be made at a glance.
- The PRESET button allows a reference point to be set at any spindle position. With the ABSOLUTE Linear Encoder technology, once the measurement reference point has been preset it will not be lost when the power is turned on.
- The ZERO/ABS button allows a display value to be zero-set at any spindle position. Press this button again to restore the absolute (ABS) coordinate.
- The maximum, minimum, or runout value can be displayed during measurement.
- An analog bar indicator has been integrated to handle upper/lower limit approaching and zero approaching. It enhances the ease of operation in the same manner as a dial indicator. The display range of the analog bar can be changed.

The new multi-function IDF Series ABSOLUTE Digimatic Indicator never forgets its absolute origin throughout the entire service life unless otherwise preset for a different setup or the main power cable is disconnected. The large LCD has several features including greatly improved visibility, green/red backlit screen for easy GO/NG judgment, the analog bar indicator for easy process monitoring such as zero/tolerance zone approaching. Maximum/minimum value hold, runout measurement, and data output functions are also included as standard features of the IDF Series Digimatic Indicator.

OPTIONAL ACCESSORIES

Order No.	Description
936937	SPC cable (1m)
965014	SPC cable (2m)
540774	Spindle lifting cable*
101040	Lug-on-center back (mm type)
101306	Lug-on-center back (inch/mm type)
02ACA571	Auxiliary spindle spring (for 25mm IDF)**
02ACA773	Auxiliary spindle spring (for 50mm IDF)**

*Lifts the spindle up to 10mm.

**Required when orienting an IDF upside down.

Technical Data

Display: LCD
Functions: Origin-Set (presetting), Zero-Set, power on/off, inch/mm conversion (inch/mm type only), resolution switching, MAX/MIN value hold, runout measurement, SPC data output, counting direction switching, analog bar range switching, GO/±NG tolerance judgment, measuring condition memory
Power supply: 9V DC (via AC adaptor)
Stem diameter: 8mm (mm type) or 3/8" (inch/mm type)
Contact point: Carbide ball with M2.5x0.45 thread (mm type) or steel ball with #4-48UNF thread (inch/mm type)
Alarm: Over-flow error, tolerance limit setting error, counting value composition error
Dust/Water protection level: Conforming to IP30
Operating temperature: 0°C to 40°C



勝特力材料 886-3-5753170
 勝特力电子(上海) 86-21-54151736
 勝特力电子(深圳) 86-755-83298787
 Http://www.100y.com.tw

SPECIFICATIONS

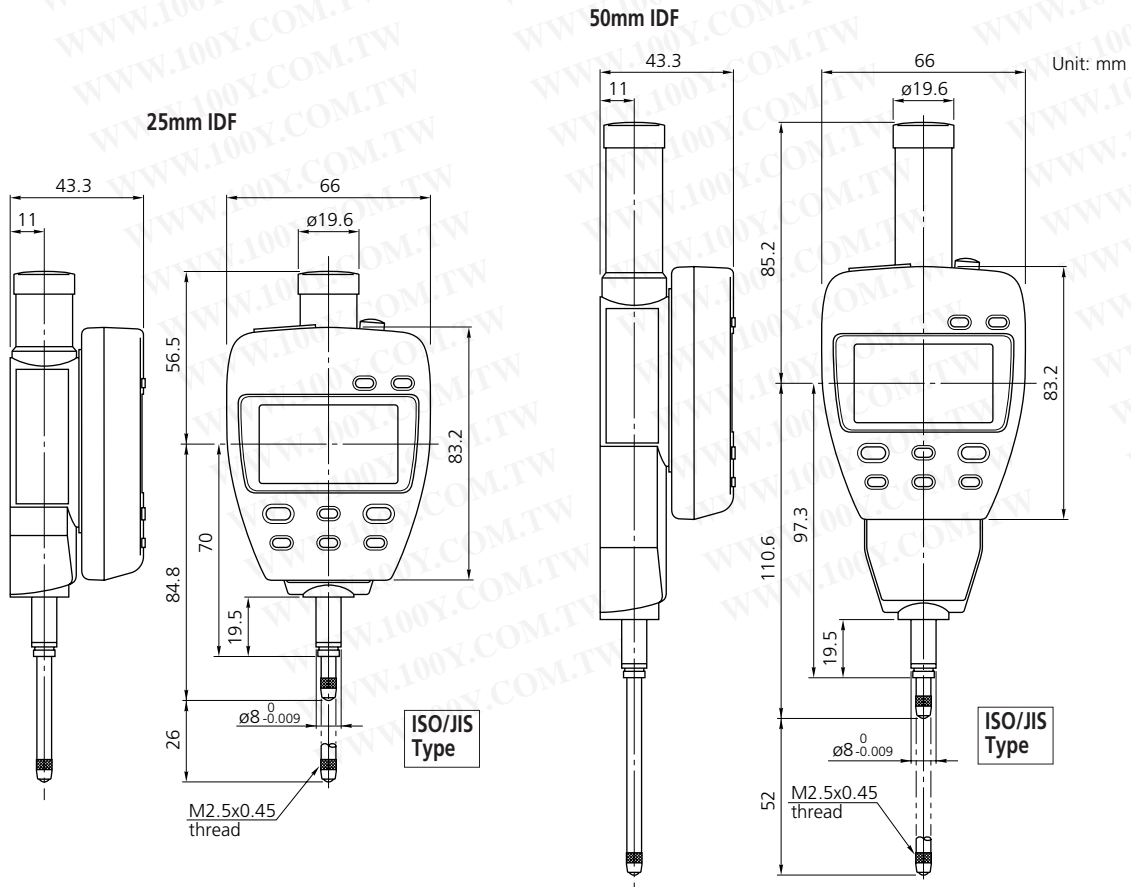
Metric						
Resolution (switchable)	Range	Order No.	Accuracy	Measuring force	Mass	Remarks
0.001mm/0.01mm	25mm	543-551	0.003mm	1.8N or less	240g	With 100V AC adaptor
		543-551A	0.003mm	1.8N or less	240g	With 120V AC adaptor
		543-551D	0.003mm	1.8N or less	240g	With 230V AC adaptor (Germany)
		543-551E	0.003mm	1.8N or less	240g	With 230V AC adaptor (UK)
		543-551DC	0.003mm	1.8N or less	240g	With 230V AC adaptor (China)
	50mm	543-553*	0.006mm	2.3N or less	330g	With 100V AC adaptor
		543-553A*	0.006mm	2.3N or less	330g	With 120V AC adaptor
		543-553D*	0.006mm	2.3N or less	330g	With 230V AC adaptor (Germany)
		543-553E*	0.006mm	2.3N or less	330g	With 230V AC adaptor (UK)
		543-553DC*	0.006mm	2.3N or less	330g	With 230V AC adaptor (China)

*A 50mm range type IDF (543-557/A/D/E/DC) is available with a measuring accuracy equal to that of the 25mm range type.

Inch/Metric						
Resolution (switchable)	Range	Order No.	Accuracy	Measuring force	Mass	Remarks
.00005"/.0001"/ .0005"/.001"/ 0.001mm/0.01mm	1" (25.4mm)	543-552	.00012"	1.8N or less	.53 lbs.	With 100V AC adaptor
		543-552A	.00012"	1.8N or less	.53 lbs.	With 120V AC adaptor
		543-552D	.00012"	1.8N or less	.53 lbs.	With 230V AC adaptor (Germany)
		543-552E	.00012"	1.8N or less	.53 lbs.	With 230V AC adaptor (UK)
		543-552DC	.00012"	1.8N or less	.53 lbs.	With 230V AC adaptor (China)
	2" (50.8mm)	543-554*	.00024"	2.3N or less	.73 lbs.	With 100V AC adaptor
		543-554A*	.00024"	2.3N or less	.73 lbs.	With 120V AC adaptor
		543-554D*	.00024"	2.3N or less	.73 lbs.	With 230V AC adaptor (Germany)
		543-554E*	.00024"	2.3N or less	.73 lbs.	With 230V AC adaptor (UK)
		543-554DC*	.00024"	2.3N or less	.73 lbs.	With 230V AC adaptor (China)

*A 2"(50.8mm) range type IDF (543-558/A/D/E/DC) is available with a measuring accuracy equal to that of the 1"(25.4mm) range type.

Dimensions



Note: Dimensions of the ANSI/AGD (inch/metric) type IDF indicator partly differ from those of the ISO/JIS (metric) type IDF.



IDC Series Absolute Digimatic Indicators

SERIES 543 — Standard Type with Multiple Functions



543-252



543-452B



543-462B

SPC
ABSOLUTE

Mitutoyo's new IDC Series Digimatic Indicator presents error-free digital readings in measurements. Its unique ABSOLUTE Linear Encoder keeps track of the origin point once set over the entire battery life, allowing the large LCD screen to display the actual spindle position from the origin point at power-on. Whenever turned on, the operator can take measurements with no need for preliminary absolute positioning.

FEATURES

- As compact as standard Series 2 dial indicators.
- Large, easy-to-read LCD.
- ZERO/ABS key: Allows the display to be Zero-Set at any spindle position for comparison measurements. This switch will also allow return to the absolute coordinate and display of the true position from the origin point.
- GO/±NG judgment can be performed by setting upper and lower tolerance limits. The judgment result (GO/±NG) can be displayed in full-size characters.
- The positive/negative count resulting from the spindle's up/down movement can be toggled.
- Unlimited response speed eliminates spindle over-speed errors.
- The IDC indicator face can be rotated 330° to an appropriate angle for easy reading.
- The measurement data can be output to an external data processor using the optional SPC cable.

Technical Data

- Display:** LCD
- Functions:** Origin-Set (preset), Zero-Set, power on/off, inch/mm conversion (inch/mm type only), SPC data output, counting direction switching, GO/±NG judgment
- Battery:** SR44 (1 pc.) (938882)
- Battery life:** Approx. 5000 hours in continuous use
- Stem diameter:** 8mm (ISO/JIS type) or 3/8" (ANSI/AGD type)
- Contact point:** Carbide ball with M2.5x0.45 thread (ISO/JIS type) or steel ball with #4-48UNF thread (ANSI/AGD type)
- Alarm:** Low battery voltage, scale contamination, over-flow error, tolerance limit setting error
- Dust/Water protection level:** Conforming to IP42
- Operating temperature:** 0°C to 40°C

OPTIONAL ACCESSORIES

Order No.	Description
905338	SPC cable (1m)
905409	SPC cable (2m)
902011	Spindle lifting lever (ISO/JIS type)*
902794	Spindle lifting lever (ANSI/AGD type)*
540774	Spindle lifting cable
101040	Lug-on-center back (ISO/JIS type)**
101306	Lug-on-center back (ANSI/AGD type)**
02ACA571	Auxiliary spindle spring (for 25mm IDC)***
02ACA773	Auxiliary spindle spring (for 50mm IDC)***

*Can be used on 12mm (.5") IDC only.
**Can be used on 25mm (1") IDC or 50mm (2") IDC.
***Required when orienting an IDC upside down.

勝特力材料 886-3-5753170
勝特力电子(上海) 86-21-54151736
勝特力电子(深圳) 86-755-83298787
[Http://www.100y.com.tw](http://www.100y.com.tw)

IDC Series Absolute Digimatic Indicators

SERIES 543 — Calculation Type



543-285B



Metric				
Resolution	Range	Stem diameter	Order No. (Flat-back)	Accuracy
0.0002mm - 1mm	12mm	8mm (ISO/JIS type)	543-285B	0.003mm
	25mm	8mm (ISO/JIS type)	543-480B	0.003mm
	50mm	8mm (ISO/JIS type)	543-485B	0.003mm

Inch/Metric				
Resolution	Range	Stem diameter	Order No. (Flat-back)	Accuracy
.00001" - .05"/ 0.0002mm - 1mm	.5" (12.7mm)	8mm (ISO/JIS type)	543-286B	.00012"
	.5" (12.7mm)	3/8" (ANSI/AGD type)	543-287B	.00012"
	1" (25.4mm)	8mm (ISO/JIS type)	543-481B	.00012"
	1" (25.4mm)	3/8" (ANSI/AGD type)	543-482B	.00012"
	2" (50.8mm)	8mm (ISO/JIS type)	543-486B	.00012"
	2" (50.8mm)	3/8" (ANSI/AGD type)	543-487B	.00012"

Technical Data

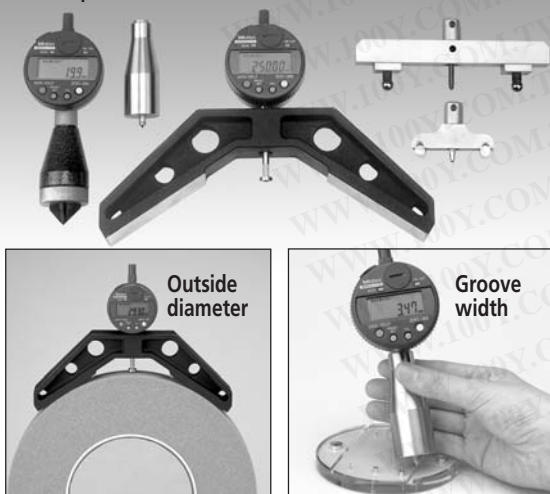
- Display:** LCD
- Functions:** Origin-Set (preset), Zero-Set, power on/off, calculation, inch/mm conversion (inch/mm type only), SPC data output, counting direction switching, GO/±NG judgment
- Battery:** SR44 (1 pc.) (938882)
- Battery life:** Approx. 5000 hours in continuous use
- Contact point:** Carbide ball with M2.5x0.45 thread (ISO/JIS type) or steel ball with #4-48UNF thread (ANSI/AGD type)
- Alarm:** Low battery voltage, scale contamination, over-flow error, tolerance limit setting error
- Operating temperature:** 0°C to 40°C

A conventional Digimatic indicator simply displays a spindle displacement, but the Calculation-Type Digimatic indicator incorporates an internal calculation function in place of spindle displacement. With fixtures, measurements such as feeler, inside diameter and radius of curvature measurement can easily be obtained without the hassle of conversion tables or equivalents.

FEATURES

- The Absolute Digimatic indicator performs internal calculations using the formula $Ax+B+Cx^{-1}$ (assuming spindle displacement as x) while the specified coefficients A, B and, C can be set with respect to the purpose of measurement or dimensions of the fixtures. This unique features allows you to read your measurements directly, without fumbling for conversions.

Fixture examples



- Various fixtures suited for individual workpieces can be prepared.
- Measuring accuracy is subject to fixture accuracy.

OPTIONAL ACCESSORIES

Order No.	Description
905338	SPC cable (1m)
905409	SPC cable (2m)
902011	Spindle lifting lever (ISO/JIS type)
540774	Spindle lifting cable

Fixture		
Contact point	Cone	—
Dimension X: Spindle displacement		
Measurement item	D= Diameter/Feeler/ Groove width H= Countersink depth	2R=Outside diameter
Calculation formula	$D=Ax$	$R=Ax$
Arithmetic Coefficient	A	$-2 \tan \frac{\theta}{2}$
	B	0
	C	0

IDC Series Absolute Digimatic Indicators

SERIES 543 — with Max./Min. Value Holding Function



SPC
ABSOLUTE

勝特力材料 886-3-5753170
 勝特力电子(上海) 86-21-54151736
 勝特力电子(深圳) 86-755-83298787
[Http://www.100y.com.tw](http://www.100y.com.tw)

With max./min. value holding function model of the IDC Series Digimatic Indicators.

FEATURES

- The maximum, minimum, or runout value can be displayed during measurement



- GO/±NG judgment is performed by setting the upper and lower tolerances for max., min. and runout values.
- High speed sampling ratio of 50 times/s.

SPECIFICATIONS

Metric							
Resolution	Range	Order No. Back w/lug	Order No. Flat-back	Accuracy	Measuring force	Mass	Remarks
0.001mm	12mm	543-260	—	0.003mm	1.5N or less	160g	ISO/JIS type

Inch/Metric							
Resolution	Range	Order No. Back w/lug	Order No. Flat-back	Accuracy	Measuring force	Mass	Remarks
.00005"/0.001mm	.5" (12.7mm)	543-261	—	.00012"	1.5N or less	.35 lbs.	ISO/JIS type
		543-262	—	.00012"	1.5N or less	.35 lbs.	ANSI/AGD type
.0001"/0.001mm	.5" (12.7mm)	543-263	—	.00012"	1.5N or less	.35 lbs.	ANSI/AGD type

Technical Data

- Display:** LCD
Functions: Origin-Set (preset), Zero-Set, power on/off, inch/mm conversion (inch/mm type only), SPC data output, counting direction switching, GO/±NG judgment, max./min./runout value holding
Battery: SR44 (1 pc.) (938882)
Battery life: Approx. 800-1,300 hours in continuous use
Stem diameter: 8mm (ISO/JIS type) or 3/8" (ANSI/AGD type)
Contact point: Carbide ball with M2.5x0.45 thread (ISO/JIS type) or steel ball with #4-48UNF thread (ANSI/AGD type)
Alarm: Low battery voltage, scale contamination, over-flow error, tolerance limit setting error
Dust/Water protection level: Conforming to IP42
Operating temperature: 0°C to 40°C

OPTIONAL ACCESSORIES

Order No.	Description
905338	SPC cable (1m)
905409	SPC cable (2m)
902011	Spindle lifting lever (ISO/JIS type)
902794	Spindle lifting lever (ANSI/AGD type)
540774	Spindle lifting cable



勝特力材料 886-3-5753170
 勝特力电子(上海) 86-21-54151736
 勝特力电子(深圳) 86-755-83298787
[Http://www.100y.com.tw](http://www.100y.com.tw)

IDC Series Absolute Digimatic Indicators

SERIES 543 — with Green/Red LED and GO/±NG Signal Output Function

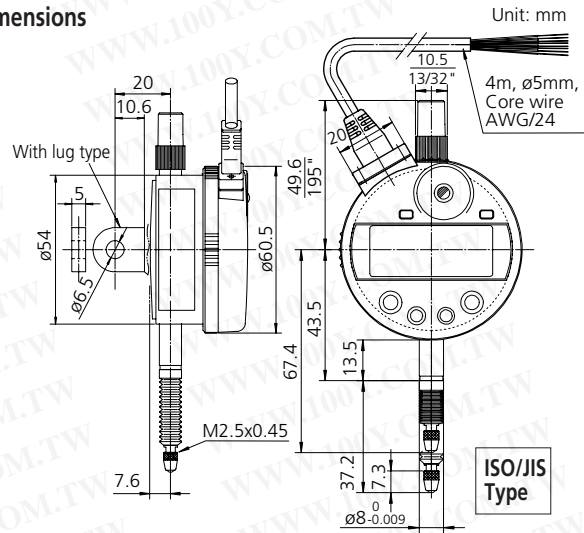


SPC
ABSOLUTE

Green/Red LED

543-280

Dimensions



Note 1: The lug is not provided for the Flat-back type.
 Note 2: Dimensions of the ANSI/AGD type IDS indicator partly differ from those of the ISO/JIS type IDS.

DIGIMATIC INDICATORS

FEATURES

- With the max./min. value holding function, the signal IDC can output the signal of the GO/±NG judgment result against the peak values set. Substitute for the mechanical/electrical contact, the judgment is carried out by calculating the measurement data obtained. This provides high reliability with no deterioration of the contact point and volume adjustment.
- Employing the absolute linear encoder, the Signal IDC always displays the spindle "Absolute Position" from the origin at power-on. Also unlimited response speed eliminates over-speed errors.
- The signal can be output to an external device like a sequencer through the NPN open-collector.
- The GO/±NG judgment result is also indicated by the green/red LED and the "<, O, >" signs on LCD.
- The Signal IDC achieves the IP54 protection level to resist dust and contaminants for safe operation in harsh machine shop environments.

Technical Data

- Display:** LCD
Functions:
- Signal output: -NG/OK/+NG (judgement result only), NPN open-collector, 30mA/24V max. output current/voltage
 - Remote control: Hold-preset, Preset-recall, Zero-Set
 - Other functions: Origin-Set, Zero-Set, power on/off, inch/mm conversion (inch/mm type only), counting direction switching, GO/±NG judgment, max./min./runout value holding
- Signal cable length:** 4m
Power supply: DC12 - 24V±10%
Stem diameter: 8mm (ISO/JIS type) or 3/8" (ANSI/AGD type)
Contact point: Carbide ball with M2.5x0.45 thread (ISO/JIS type) or steel ball with #4-48UNF thread (ANSI/AGD type)
Dust/Water protection level: Conforming to IP54
Operation temperature: 0°C to 40°C

OPTIONAL ACCESSORIES

Order No.	Description
540774	Spindle lifting cable
902011	Spindle lifting lever (ISO/JIS type)
902794	Spindle lifting lever (ANSI/AGD type)
125317	Rubber boot

SPECIFICATIONS

Metric

Resolution	Range	Order No. Back w/lug	Order No. Flat-back	Accuracy	Measuring force	Mass	Remarks
0.001mm	12.7mm	543-280	543-280B	0.003mm	2.0N or less	345g	ISO/JIS type

Inch/Metric

Resolution	Range	Order No. Back w/lug	Order No. Flat-back	Accuracy	Measuring force	Mass	Remarks
.00005"/0.001mm	.5" (12.7mm)	543-281	543-281B	.00012"	2.0N or less	.76 lbs.	ISO/JIS type
		543-282	543-282B	.00012"	2.0N or less	.76 lbs.	ANSI/AGD type
.0001"/0.001mm	.5" (12.7mm)	543-283	543-283B	.00012"	2.0N or less	.76 lbs.	ANSI/AGD type

IDC Series Absolute Digimatic Indicators

SERIES 543 — Dust-proof Type and Low Measuring Force Type

勝特力材料 886-3-5753170
 勝特力电子(上海) 86-21-54151736
 勝特力电子(深圳) 86-755-83298787
[Http://www.100y.com.tw](http://www.100y.com.tw)



FEATURES

- The IP53 protection level structure of the dust-proof type IDC allows the indicator to resist dust and contaminants for safe operation in harsh machine shop environments.
- The low measuring force type IDC indicators are specially designed for elastic workpieces such as plastic parts.

Technical Data

Display: LCD
Functions: Origin-Set (preset), Zero-Set, power on/off, inch/mm conversion (inch/mm type only), SPC data output, counting direction switching, GO/±NG judgment
Battery: SR44 (1 pc.) (938882)
Battery life: Approx. 5000 hours in continuous use
Stem diameter: 8mm (ISO/JIS type) or 3/8" (ANSI/AGD type)
Contact point: Carbide ball with M2.5x0.45 thread (ISO/JIS type) or steel ball with #4-48UNF thread (ANSI/AGD type)
Alarm: Low battery voltage, scale contamination, over-flow error, tolerance limit setting error
Operating temperature: 0°C to 40°C

OPTIONAL ACCESSORIES

Order No.	Description
905338	SPC cable (1m)
905409	SPC cable (2m)
902011	Spindle lifting lever (ISO/JIS type)*
902794	Spindle lifting lever (ANSI/AGD type)*
540774	Spindle lifting cable

*Can not be used on the dust-proof type IDC.

SPECIFICATIONS

Metric Dust-proof Type IDC Series Digimatic Indicators							
Resolution	Range	Order No. Back w/lug	Order No. Flat-back	Accuracy	Measuring force	Mass	Remarks
0.001mm	12mm	543-257	543-257B	0.003mm	2.0N or less	160g	ISO/JIS type
0.01mm	12mm	543-277	543-277B	0.02mm	2.0N or less	160g	ISO/JIS type

Inch/Metric Dust-proof Type IDC Series Digimatic Indicators							
Resolution	Range	Order No. Back w/lug	Order No. Flat-back	Accuracy	Measuring force	Mass	Remarks
.00005"/0.001mm	.5" (12.7mm)	543-258	543-258B	.00012"	2.0N or less	.35 lbs.	ISO/JIS type
		543-259	543-259B	.00012"	2.0N or less	.35 lbs.	ANSI/AGD type
.0005"/0.01mm	.5" (12.7mm)	543-278	543-278B	.0008"	2.0N or less	.35 lbs.	ISO/JIS type
		543-279	543-279B	.0008"	2.0N or less	.35 lbs.	ANSI/AGD type

Metric Low Measuring Force Type IDC Series Digimatic Indicators							
Resolution	Range	Order No. Back w/lug	Order No. Flat-back	Accuracy	Measuring force	Mass	Remarks
0.001mm	12mm	543-254	543-254B	0.003mm	0.4N - 0.7N	160g	ISO/JIS type
0.01mm	12mm	543-274	543-274B	0.02mm	0.2N - 0.5N	160g	ISO/JIS type

Inch/Metric Low Measuring Force Type IDC Series Digimatic Indicators							
Resolution	Range	Order No. Back w/lug	Order No. Flat-back	Accuracy	Measuring force	Mass	Remarks
.00005"/0.001mm	.5" (12.7mm)	543-255	543-255B	.00012"	0.4N - 0.7N	.35 lbs.	ISO/JIS type
		543-256	543-256B	.00012"	0.4N - 0.7N	.35 lbs.	ANSI/AGD type
.0005"/0.01mm	.5" (12.7mm)	543-275	543-275B	.0008"	0.2N - 0.5N	.35 lbs.	ISO/JIS type
		543-276	543-276B	.0008"	0.2N - 0.5N	.35 lbs.	ANSI/AGD type

DIGIMATIC INDICATORS



IDC Series Absolute Digimatic Indicators

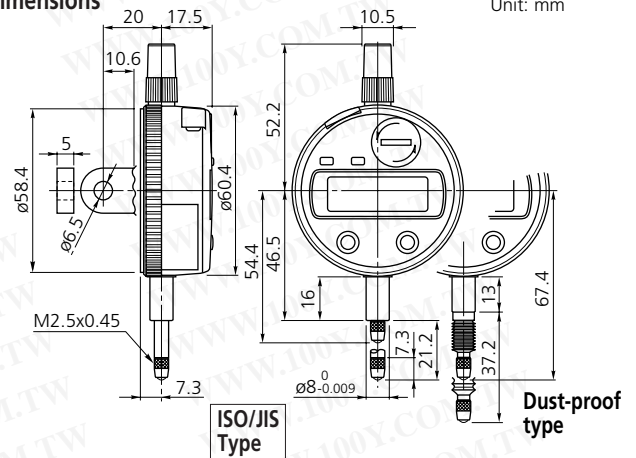
SERIES 543 — with Economical Design



SPC
ABSOLUTE

The IDS Series Digimatic Indicator offers simple, error-free digital readings in a basic and economical package.

Dimensions



Note 1: The lug is not provided for the Flat-back type.
 Note 2: Dimensions of the ANSI/AGD type IDS indicator partly differ from those of the ISO/JIS type IDS.

DIGIMATIC INDICATORS

FEATURES

- As compact as standard Series 2 dial indicators.
- The IDS indicates the absolute position of the spindle from the origin point at power-on, allowing to start measurements.
- After the initial zero-setting with the ORIGIN button, the repeated absolute positioning is no longer necessary over the entire battery life.
- Measurement error due to spindle over-speed is eliminated with the ABSOLUTE Encoder.

Technical Data

Display: LCD
Functions: Origin-Set, power on/off, counting direction switching, inch/mm conversion (inch/mm type only), SPC data output
Battery: SR44 (1 pc.) (938882)
Battery life: Approx. 20000 hours in continuous use
Stem diameter: 8mm (ISO/JIS type) or 3/8" (ANSI/AGD type)
Contact point: Carbide ball with M2.5x0.45 thread (ISO/JIS type) or steel ball with #4-48UNF thread (ANSI/AGD type)
Dust/Water protection level: Conforming to IP42
Alarm: Low battery voltage, scale contamination
Operating temperature: 0°C to 40°C

OPTIONAL ACCESSORIES

Order No.	Description
905338	SPC cable (1m)
905409	SPC cable (2m)
903424	Spindle lifting lever (ISO/JIS type)
903425	Spindle lifting lever (ANSI/AGD type)
540774	Spindle lifting cable
125317	Spare rubber boot (for dust-proof type)
02ACB420	Lug-on-center back (ISO/JIS type)
02ACB430	Lug-on-center back (ANSI/AGD type)
02ACB440	Flat back
02ACB610	Back with post
02ACB630	Adjustable back (ISO/JIS type)
02ACB620	Adjustable back (ANSI/AGD type)
02ACB640	Back with offset lug
02ACB650	Magnetic back
02ACB670	Back with screw mount (ISO/JIS type)
02ACB660	Back with screw mount (ANSI/AGD type)
02ACB680	Back with adjustable bracket

SPECIFICATIONS

Metric							
Resolution	Range	Order No. Back w/lug	Flat-back	Accuracy	Measuring force	Mass	Remarks
0.001mm	12mm	543-690	543-690B	0.003mm	2.0N or less	150g	ISO/JIS type
	12mm	543-694	543-694B	0.003mm	2.0N or less	150g	ISO/JIS type, Dust-proof
0.01mm	12mm	543-681	543-681B	0.02mm	2.0N or less	120g	ISO/JIS type

Inch/Metric							
Resolution	Range	Order No. Back w/lug	Flat-back	Accuracy	Measuring force	Mass	Remarks
.00005"/0.001mm	.5" (12.7mm)	543-691	543-691B	.00012"	2.0N or less	.33 lbs.	ISO/JIS type
		543-695	543-695B	.00012"	2.0N or less	.33 lbs.	ISO/JIS type, Dust-proof
		543-692	543-692B	.00012"	2.0N or less	.33 lbs.	ANSI/AGD type
.0001"/0.001mm	.5" (12.7mm)	543-696	543-696B	.00012"	2.0N or less	.33 lbs.	ANSI/AGD type, Dust-proof
		543-693	543-693B	.00012"	2.0N or less	.33 lbs.	ANSI/AGD type
.0005"/0.01mm	.5" (12.7mm)	543-682	543-682B	.0008"	2.0N or less	.26 lbs.	ISO/JIS type
		543-683	543-683B	.0008"	2.0N or less	.26 lbs.	ANSI/AGD type

IDU Series Absolute Digimatic Indicators

SERIES 575 — with Slim and Economical Design

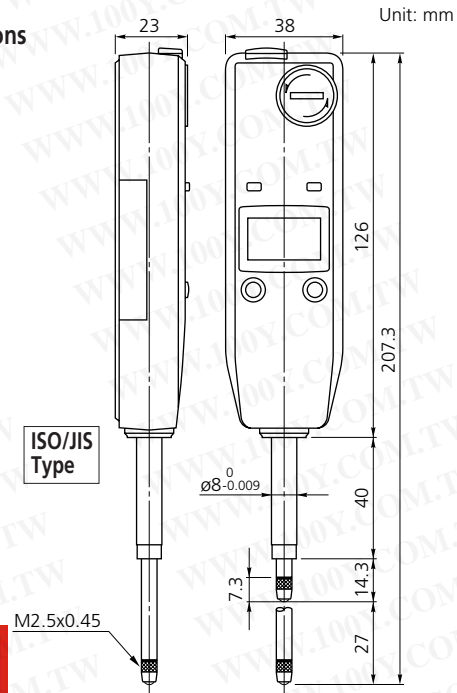


575-123



勝特力材料 886-3-5753170
 勝特力电子(上海) 86-21-54151736
 勝特力电子(深圳) 86-755-83298787
[Http://www.100y.com.tw](http://www.100y.com.tw)

Dimensions



Note: Dimensions of the ANSI/AGD type IDU indicator partly differ from those of the ISO/JIS type IDU.

FEATURES

- Slim type digital indicator with low price.
- Large LCD and simple key operation.
- The IDU displays the absolute position of the spindle from the origin point at power-on.
- After the initial origin setting, the IDU no longer needs absolute positioning over the entire battery life; the origin is remembered even after power-off.
- Ideal for installation into measuring devices because of its compact design and long battery life.
- The ABSOLUTE Encoder eliminates spindle over-speed error and prevents electrical noise interference errors.
- SPC data output.

Technical Data

- Display:** LCD
Functions: Origin-Set, power on/off, inch/mm conversion (inch/mm type only), counting direction switching, SPC data output SR44 (1 pc.) (938882)
Battery: Approx. 20000 hours in continuous use
Battery life: Approx. 20000 hours in continuous use
Stem diameter: 8mm (ISO/JIS type) or 3/8" (ANSI/AGD type)
Contact point: Carbide ball with M2.5x0.45 thread (ISO/JIS type) or steel ball with #4-48UNF thread (ANSI/AGD type)
Dust/Water protection level: Conforming to IP42
Alarm: Low battery voltage, scale contamination
Operating temperature: 0°C to 40°C

OPTIONAL ACCESSORIES

Order No.	Description
905338	SPC cable (1m)
905409	SPC cable (2m)
540774	Spindle lifting cable*

*Lifts the spindle up to 10mm.

SPECIFICATIONS

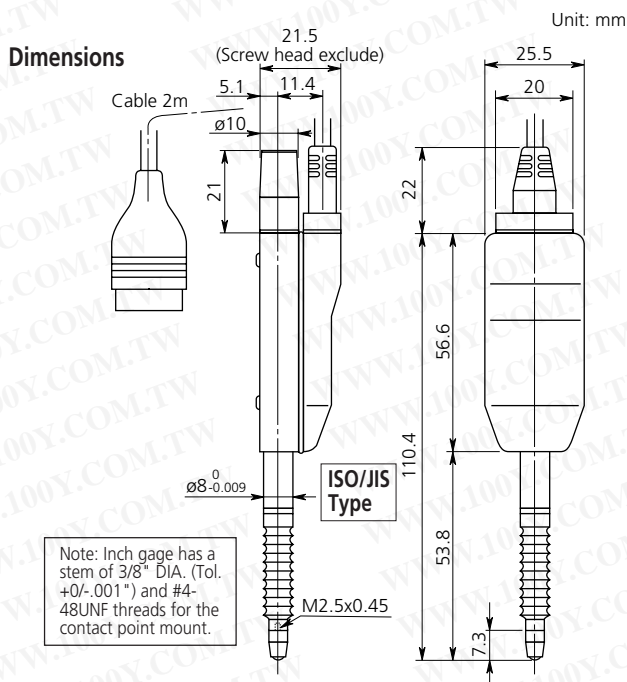
Metric							
Resolution	Range	Order No. Back w/lug	Order No. Flat-back	Accuracy	Measuring force	Mass	Remarks
0.01mm	25mm	—	575-121	0.02mm	1.8N or less	140g	ISO/JIS type

Inch/Metric							
Resolution	Range	Order No. Back w/lug	Order No. Flat-back	Accuracy	Measuring force	Mass	Remarks
.0005"/0.01mm	1" (25.4mm)	—	575-122	.0008"	1.8N or less	.31 lbs.	ISO/JIS type
		—	575-123	.0008"	1.8N or less	.31 lbs.	ANSI/AGD type



LGS Series Linear Gages

SERIES 575 — Compact and Economical Design



The LGS is Mitutoyo's new, compact Linear Gage designed to fit into tight spaces. Two versions are available offering either positive or negative readings as the spindle retracts. An EC Counter must also be ordered for readout. (See page 252.)

FEATURES

- Powered by the display unit connected via the permanently fixed SPC cable (2m).
- Maximum response speed: 1600mm/s

勝特力材料 886-3-5753170
 勝特力电子(上海) 86-21-54151736
 勝特力电子(深圳) 86-755-83298787
[Http://www.100y.com.tw](http://www.100y.com.tw)

OPTIONAL ACCESSORIES

Order No.	Description
903594	Air Drive Unit (metric)
903598	Air Drive Unit (inch)
02ADF640	Cable extension adapter
936937	Extension cable (1m)
965014	Extension cable (2m)
(See page 252.)	EC Counter

SPECIFICATIONS

Metric						
Resolution	Range	Order No.	Accuracy	IP protection level	Measuring force	Remarks
0.01mm	12mm	575-301	0.02mm	IP66	1.96N or less	ISO/JIS type
		575-302	0.02mm	IP66	1.96N or less	SO/JIS type, Minus reading type

Inch						
Resolution	Range	Order No.	Accuracy	IP protection level	Measuring force	Remarks
.0005"	.5"	575-311	.001"	IP66	1.96N or less	ANSI/AGD type
		575-312	.001"	IP66	1.96N or less	ANSI/AGD type, Minus reading type

LGD, LGD-M Series Absolute Linear Gages

SERIES 575 — with Continuous Position Tracking



Digimatic Power Supply Unit

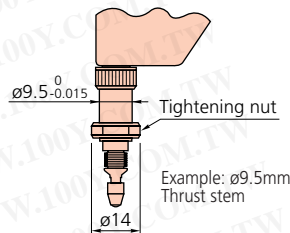
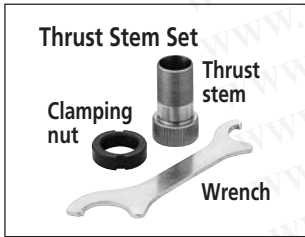
965275n
 (To denote your AC line voltage fill the blank of order number with the following suffixes. **A** for 120V, **D** for 220V, **E** for 240/220V. No suffix is required for 100V.)

Optional Accessories:
936937 SPC cable (1m)
965014 SPC cable (2m)
937179T Foot switch

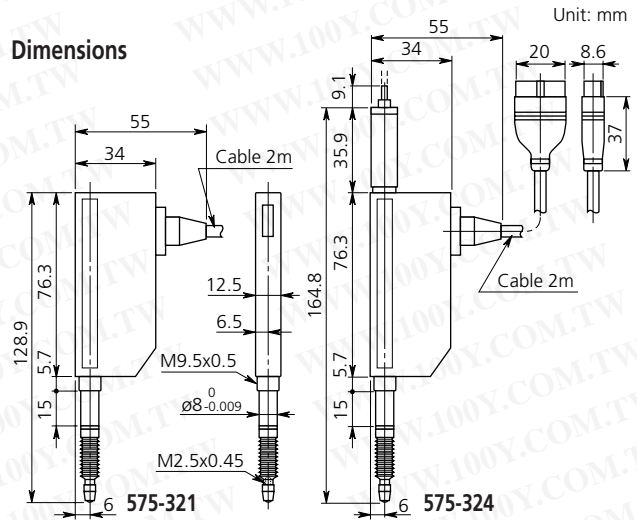
The LGD is Mitutoyo's new, ultra-compact ABS Linear Gage designed to fit into very tight spaces. It keeps track of its origin point once set. An EC Counter must also be ordered for readout. (See page 252.)

FEATURES

- Length of SPC cable: 2m (permanently fixed)
- Digimatic Power Supply Unit is required for setting the origin point.
- Special linear ball bearings are used for the spindle guide to ensure a long service life (except for LGD-M).
- Optional thrust stem and tightening nut facilitate setup of the LGD linear gage in holes of the plate.



Dimensions



Note 1: 25mm and 50mm LGD Linear Gages have a stem of $\varnothing 15\text{mm}$ (Tol. $+0/-0.018$).

OPTIONAL ACCESSORIES

Order No.	Description
238772	Spare rubber boot (for 10mm LGD)
02ACA376	Spare rubber boot (for LGD-M)
962504	Spare rubber boot (for 25mm LGD)
962505	Spare rubber boot (for 50mm LGD)
02ADC730	$\varnothing 9.5\text{mm}$ Thrust stem set (for 10mm LGD)
02ADC740	$\varnothing 18\text{mm}$ Thrust stem set (for 25mm/50mm LGD)
02ADF640	Cable extension adapter
936937	Extension cable (1m)
965014	Extension cable (2m)
(See page 252.)	EC Counter

勝特力材料 886-3-5753170
 胜特力电子(上海) 86-21-54151736
 胜特力电子(深圳) 86-755-83298787
[Http://www.100y.com.tw](http://www.100y.com.tw)

SPECIFICATIONS

Metric						
Resolution	Range	Order No.	Accuracy	IP protection level	Measuring force	Remarks
0.01mm	10mm	575-321	0.02mm	IP66	1.2N or less	—
		575-324	0.02mm	IP54	1.2N or less	With pneumatic cylinder
		575-325	0.015mm	IP66	2.0N or less	LGD-M
25mm	50mm	575-322	0.02mm	IP66	4.6N or less	—
		575-323	0.03mm	IP66	5.7N or less	—

Inch						
Resolution	Range	Order No.	Accuracy	IP protection level	Measuring force	Remarks
.0005"	.4"	575-331	.001"	IP66	1.2N or less	—
		575-334	.001"	IP54	1.2N or less	With pneumatic cylinder
		575-335	.0006"	IP66	2.0N or less	LGD-M
1"	2"	575-332	.001"	IP66	4.6N or less	—
		575-333	.0012"	IP66	5.7N or less	—