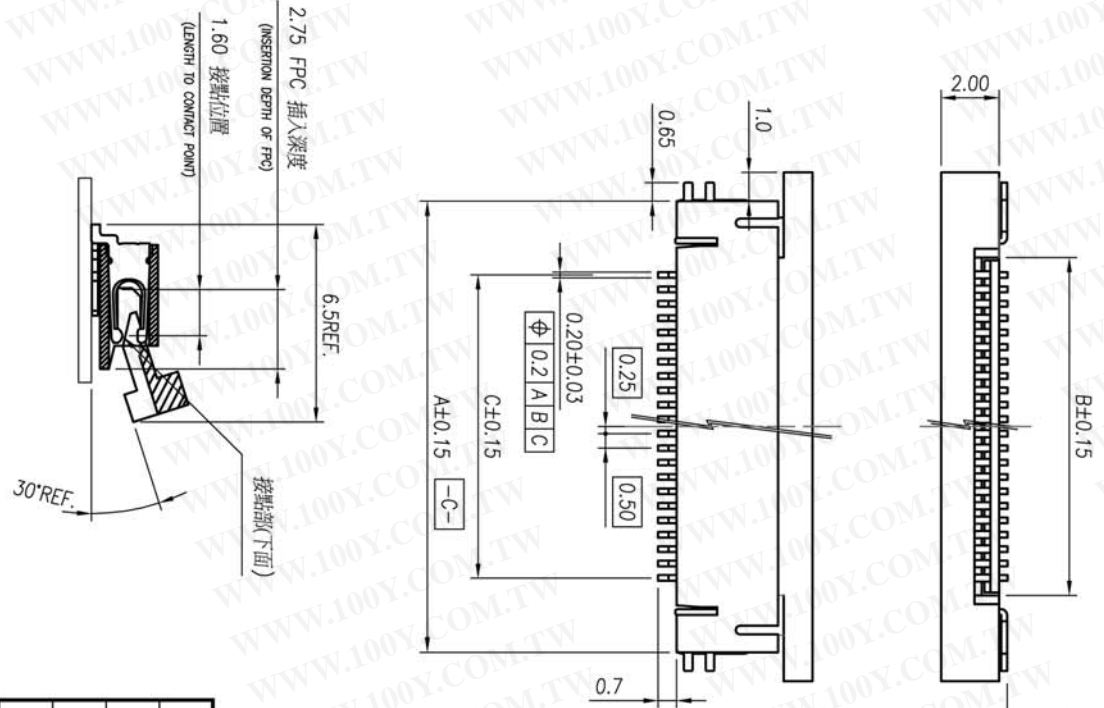


REV	MODIFICATION	DATE	DRAW
F	EN-04-0501	05.04.04	TONY
G	EN-04-0649	06.29.04	TONY
H	EN-06-0424	04.20.06	TONY

NO. OF CONTACT	DM. A	DM. B	DM. C
04	6.6	2.5	1.5
05	7.1	3.0	2.0
06	7.6	3.5	2.5
07	8.1	4.0	3.0
09	9.1	5.0	4.0
10	9.6	5.5	4.5
11	10.1	6.0	5.0
12	10.6	6.5	5.5
13	11.1	7.0	6.0
14	11.6	7.5	6.5
15	12.1	8.0	7.0
16	12.6	8.5	7.5
17	13.1	9.0	8.0
18	13.6	9.5	8.5
19	14.1	10.0	9.0
20	14.6	10.5	9.5
21	15.1	11.0	10.0
22	15.6	11.5	10.5
23	16.1	12.0	11.0
24	16.6	12.5	11.5
25	17.1	13.0	12.0
26	17.6	13.5	12.5
27	18.1	14.0	13.0
28	18.6	14.5	13.5
29	19.1	15.0	14.0
30	19.6	15.5	14.5
31	20.1	16.0	15.0
32	20.6	16.5	15.5
33	21.1	17.0	16.0
34	21.6	17.5	16.5
35	22.1	18.0	17.0
36	22.6	18.5	17.5
37	23.1	19.0	18.0
38	23.6	19.5	18.5
39	24.1	20.0	19.0
40	24.6	20.5	19.5
41	25.1	21.0	20.0
42	25.6	21.5	20.5
43	26.1	22.0	21.0
44	26.6	22.5	21.5
45	27.1	23.0	22.0
46	27.6	23.5	22.5
47	28.1	24.0	23.0
48	28.6	24.5	23.5
49	29.1	25.0	24.0
50	29.6	25.5	24.5

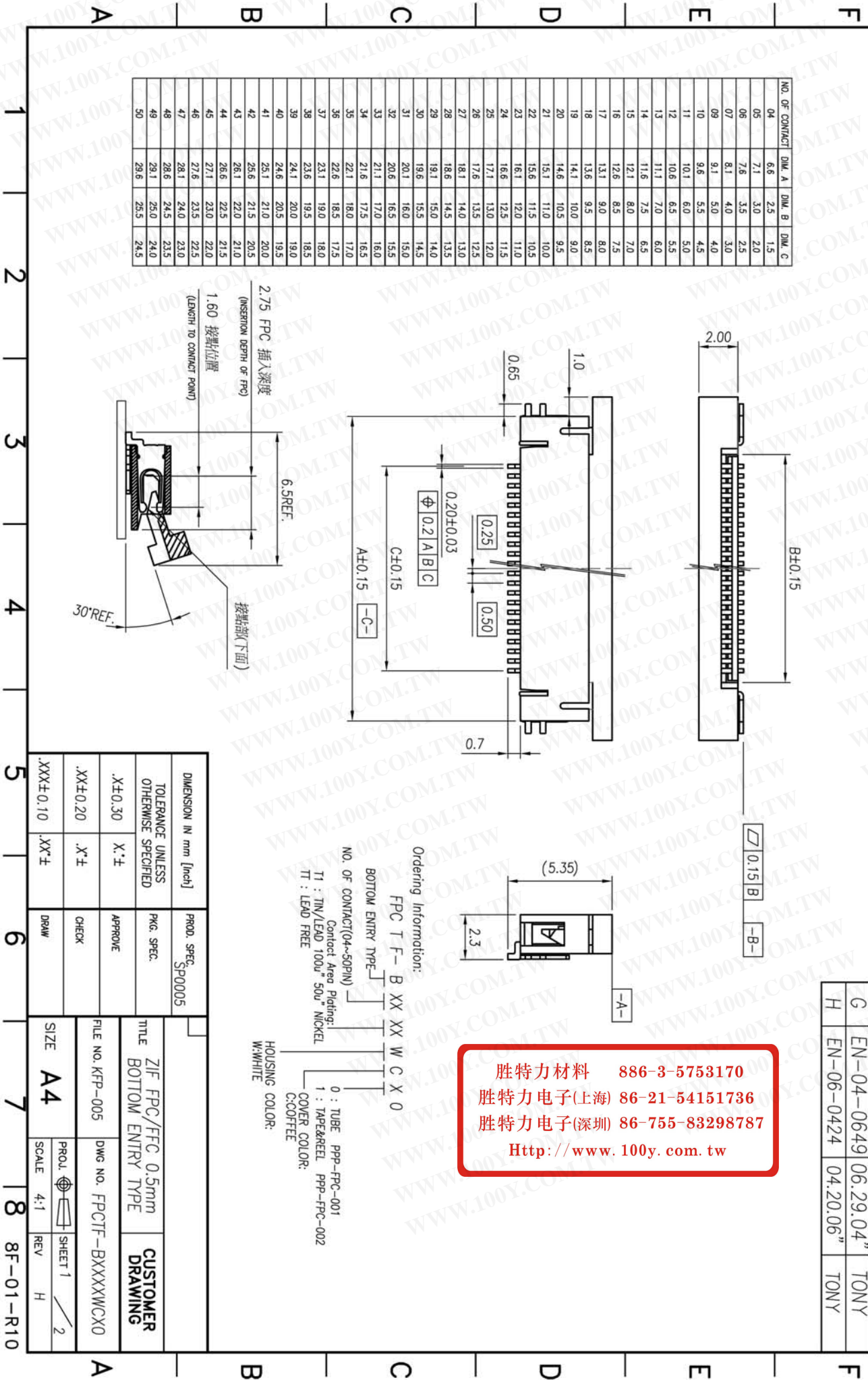


Ordering Information:

FPC T F- B XX XX W C X 0
 BOTTOM ENTRY TYPE
 NO. OF CONTACT(04~50PIN)
 Contact Area Plating:
 T1 : TIN/LEAD 100u" 50u" NICKEL
 TT : LEAD FREE
 HOUSING COLOR:
 W:WHITE
 C:COFFEE
 0 : TUBE PFP-FPC-001
 1 : TAPE&REEL PFP-FPC-002

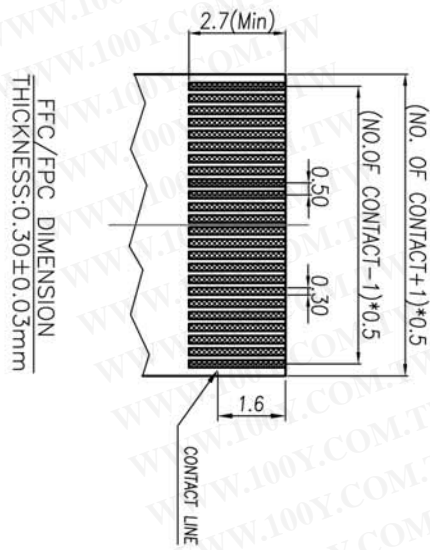
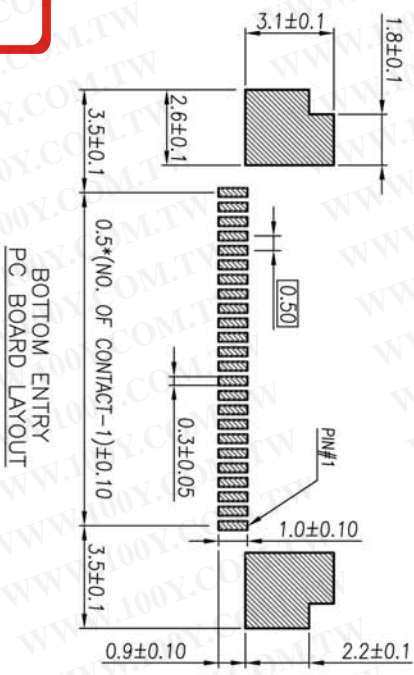
胜特力材料 886-3-5753170
 胜特力电子(上海) 86-21-54151736
 胜特力电子(深圳) 86-755-83298787
[Http://www.100y.com.tw](http://www.100y.com.tw)

DIMENSION IN mm [inch]	PROD. SPEC. SPP0005	ZIF FPC/FCC 0.5mm BOTTOM ENTRY TYPE		CUSTOMER DRAWING
TOLERANCE UNLESS OTHERWISE SPECIFIED	PKG. SPEC.	FILE NO. KFP-005	DWG NO. FPCFT-BXXXXWCX0	
.X±0.30	X.±	APPROVE	PROJ. SHEET 1	2
.XX±0.20	X.±	CHECK	SCALE 4:1	REV H
.XXX±0.10	.XX±	DRAW		



8F-01-R10

胜特力材料 886-3-5753170
 胜特力电子(上海) 86-21-54151736
 胜特力电子(深圳) 86-755-83298787
[Http://www.100y.com.tw](http://www.100y.com.tw)



BOTTOM ENTRY
PC BOARD LAYOUT

FFC/FPC DIMENSION
THICKNESS: 0.30±0.03mm

Ordering Information:

FPC T F- B XX XX W C X 0
 BOTTOM ENTRY TYPE
 NO. OF CONTACT(04~50PIN)
 Contact Area Plating:
 TI : TIN/LEAD 100u" 50u" NICKEL
 TT : LEAD FREE
 HOUSING COLOR:
 W:WHITE
 C:COFFEE
 0 : TUBE PFP-FPC-001
 1 : TAPE&REEL PFP-FPC-002

Specifications

Material & Finish
 Housing Material: Nylon 6T UL94V-0 / COLOR: White
 Silder: PPS UL94V-0 / COLOR: Coffee
 Plating:
 Contacts: Copper alloy / Under plating : Nickel (50 μ" Min.)
 Over plating : Tin alloy (100 μ" Min.)
 Latch : Copper alloy / Under plating: Copper (50 μ" Min.)
 Over plating: Tin alloy (100 μ" Min.)
 Electrical Performance:
 Rated current: 0.5A
 Rated voltage: 50 VDC
 Contact Resistance: 30Ω max. (at 20mVDC, 100mA max.)
 Insulation Resistance: 100MΩ min. (at 500 VDC)
 Dielectric Withstanding Voltage: AC 250V / 60 sec.
 (Leak current must be 1mA max.)
 Operating Temperature:-30° to +85°

REV	MODIFICATION	DATE	DRAW
F	EN-04-0501	05.04.04"	TONY
G	EN-04-0649	06.29.04"	TONY
H	EN-06-0424	04.20.06"	TONY

DIMENSION IN mm [inch]		PROD. SPEC.	ZIF FPC/FFC 0.5mm BOTTOM ENTRY TYPE		CUSTOMER DRAWING	
TOLERANCE UNLESS OTHERWISE SPECIFIED		SP0005	FILE NO. KFP-005		DWG NO. FPCTF-BXXXXWCX0	
.X±0.30	X.±	APPROVE	TITLE		PROJ. SCALE	
.XX±0.20	.X.±	CHECK	BOTTOM ENTRY TYPE		SHEET 2	
.XXX±0.10	.XX.±	DRAW	SIZE A4		REV H	

