

I/O MODULES

ESR8 SERIES

ESR8 E155181(R)

FEATURES

- Optically Isolated.
- Micro-computer/TTL /CMOS Compatible
- Zero Voltage Turn-on, Zero Current Turn-off (Minizes Emi/Pfz) (AC Output).
- Output Snubber Circuit Protection.
- Compatible With 5, 15, 24 Volt Logic Systems.
- Industry Standard Package and Pin-out.



PART NUMBERING SYSTEM

```

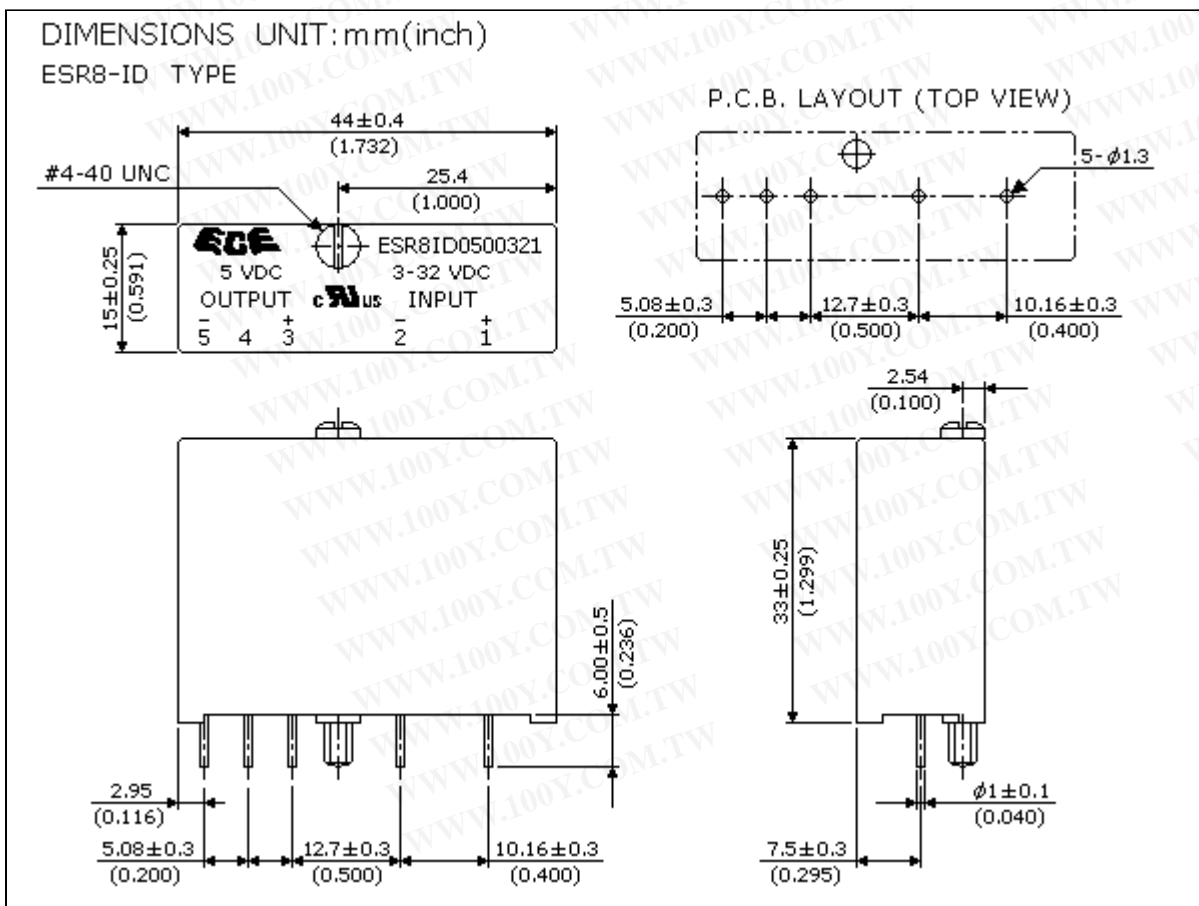
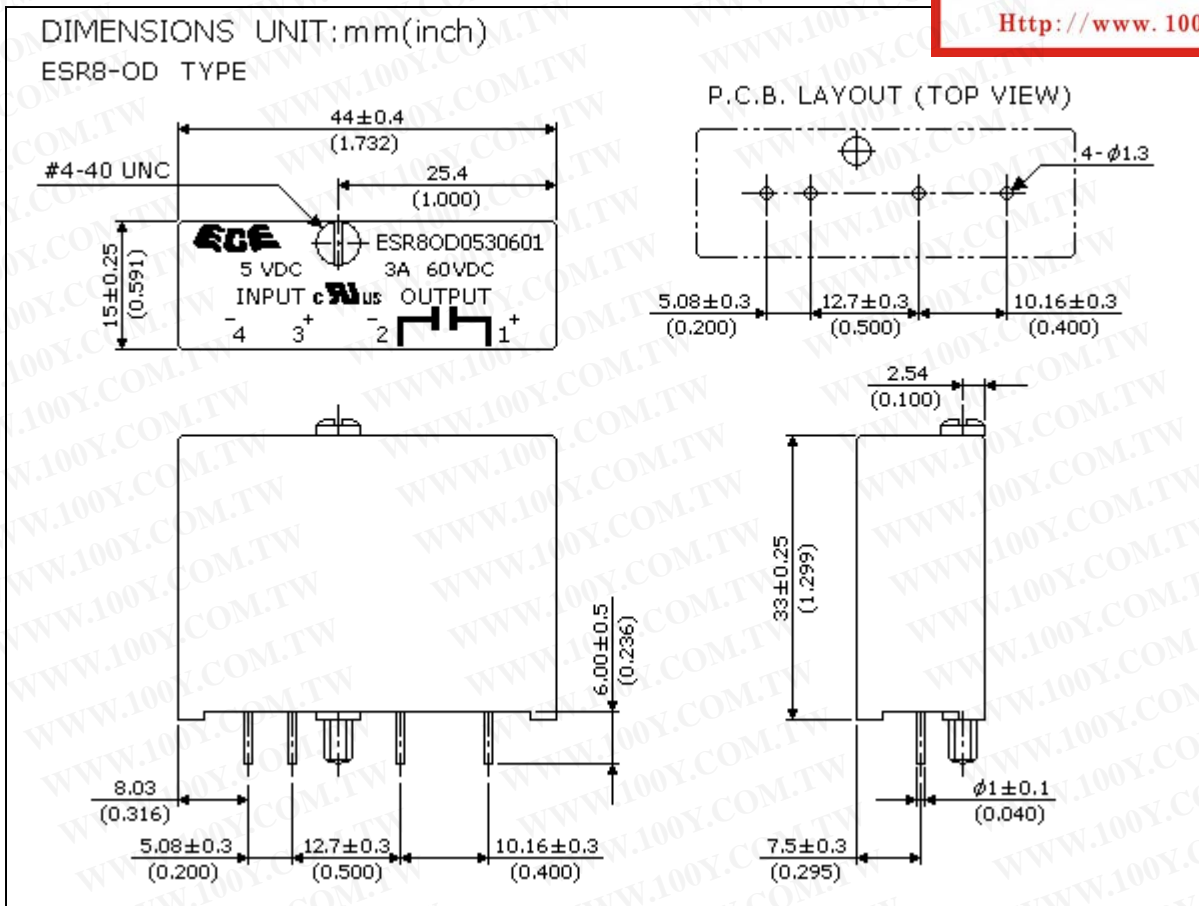
ESR 80A 05 3 240 0 Z
|      |   |   |   |   |
|      |   |   |   |   | +--- Z:RoHS Compliance
|      |   |   |   |   | +--- 0:Zero-on, Normal Open
|      |   |   |   |   |       1:Random-on, Normal Open
|      |   |   |   |   | +--- Nominal Field Voltage
|      |   |   |   |   |       240:240VAC; 060:60VDC
|      |   |   |   |   | +--- Load Current
|      |   |   |   |   |       3:3Amps
|      |   |   |   |   | +--- Nominal Logic Voltage Type
|      |   |   |   |   |       05:5V; 15:15V; 24:24V
|      |   |   |   |   | +--- Type Name
|      |   |   |   |   |       80A: I/O Modules AC Output (Black)
|      |   |   |   |   |       80D: I/O Modules DC Output (Red)
|      |   |   |   |   | +--- Series Name:ESR
  
```

勝特力材料 886-3-5753170
 勝特力电子(上海) 86-21-54151736
 勝特力电子(深圳) 86-755-83298787
[Http://www.100y.com.tw](http://www.100y.com.tw)

```

ESR 8IA 05 0 240 1 Z
|      |   |   |   |   |
|      |   |   |   |   | +--- Z:RoHS Compliance
|      |   |   |   |   | +--- 1:Random-on, Normal Open
|      |   |   |   |   | +--- Nominal Field Voltage
|      |   |   |   |   |       240:240VAC; 032:32VDC
|      |   |   |   |   | +--- 0:Standard
|      |   |   |   |   | +--- Nominal Logic Voltage Type
|      |   |   |   |   |       05:5V; 15:15V; 24:24V
|      |   |   |   |   | +--- Type Name
|      |   |   |   |   |       8IA: I/O Modules AC Input (Yellow)
|      |   |   |   |   |       8ID: I/O Modules DC Input (White)
|      |   |   |   |   | +--- Series Name:ESR
  
```

DIMENSIONS



SPECIFICATIONS..... (OUTPUT CONTROL)

DESCRIPTION	TYPES	ESR80A			ESR80D		
		0532400	1532400	2432400	0530601	1530601	2430601
▶ INPUT CIRCUIT							
Nominal Input Voltage (VDC)		5	15	24	5	15	24
Control Voltage Range (VDC)		2.5-6.0	8.5-18.5	16.5-29.0	2.5-6.0	8.5-18.5	16.5-29.0
Min. Turn-off Voltage (VDC)		2			2		
Typical Input Current (mADC)		10			10		
Max. Input Current (mADC)		27	20	13.5	27	20	13.5
Input Resistance (Ω)		240	900	2.2k	240	900	2.2k
▶ OUTPUT CIRCUIT							
Max. Load Current		3A			3A		
Nominal Load Voltage		240 VAC			60 VDC		
Load Voltage Range		24-240 VAC			3-60 VDC		
Non-Repetitive Max. Voltage		600 Vpeak			60 Vpeak		
Non-Repetitive Max. Peak Current		80A			5A		
Max. Off-state Leakage Current		5mA			1.0mA		
Max. On-state Voltage Drop		1.5 VAC			1.5 VDC		
Min. Load Current		50mA			10mA		
Max. Off-state Voltage Drop (dt/dv)		100V/ μ s			-----		
Operating Frequency Range		47Hz ~ 63Hz			-----		
▶ GENERAL CHARACTERISTICS							
Zero-on or Random-on		Z			R		
Max. Turn -on Time		8.3ms (60Hz)			50 μ s		
Max. Turn-off Time		8.3ms (60Hz)			100 μ s		
Insulation Resistance		DC 500V 10 ⁸ Ω Min. (Between Input & Output, Input / Output & Case)					
Dielectric Strength		3.5K VAC (Between Input & Output)					
Capacitance		10pF Max. (Between Input & Output)					
Operating Temperature		-20 $^{\circ}$ C ~ +80 $^{\circ}$ C					
Storage Temperature		-40 $^{\circ}$ C ~ +100 $^{\circ}$ C					

SPECIFICATIONS..... (INPUT CONTROL)

DESCRIPTION	TYPES	ESR81A			ESR81D		
		0502401	1502401	2402401	0500321	1500321	2400321
▶ INPUT CIRCUIT (Pin 1+2)							
Control Voltage Range		90-280VAC			3-32VAC		
Min. Turn-off Voltage		40VAC			2VDC		

Max. Input Current	10mADC			16mADC		
Operating Frequency	47Hz ~ 63Hz			-----		
Input Resistance	-----			2.2K Ω		
▶ OUTPUT CIRCUIT (Pin 4+5)						
Max. Output Current	50mA					
Nominal Load Voltage	30VDC					
Max. Output Voltage Drop	200mVDC					
Max. Off-state Leakage Current	10 μ A					
▶ LOGIC SUPPLY (Pin 3+5)						
Supply Voltage Range	3-6	9-18	20-30	3-6	9-18	20-30
Max. Supply Current	16mA					
Max. Off-state Leakage Current	10 μ A					
▶ GENERAL CHARACTERISTICS						
Max. Turn-on Time	20ms			1.0ms		
Max. Turn-off Time	20ms			1.0ms		
Insulation Resistance	DC 500V 10 ⁸ Ω Min. (Between Input & Output, Input / Output & Case)					
Dielectric Strength	3.5K VAC (Between Input & Output)					
Capacitance	10pF Max. (Between Input & Output)					
Operating Temperature	-20 $^{\circ}$ C ~ +80 $^{\circ}$ C					
Storage Temperature	-40 $^{\circ}$ C ~ +100 $^{\circ}$ C					

勝特力材料 86-3-5753170
 勝特力电子(上海) 86-21-54151736
 勝特力电子(深圳) 86-755-83298787
[Http://www.100y.com.tw](http://www.100y.com.tw)