



勝特力材料 886-3-5753170  
 勝特力电子(上海) 86-21-54151736  
 勝特力电子(深圳) 86-755-83298787  
 Http://www.100y.com.tw

# AR(S)5001 THRU AR(S)5007

## AUTOMOTIVE SILICON RECTIFIERS TYPE 50A

### Features

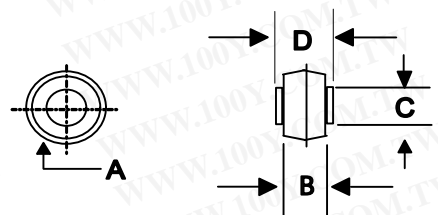
- High Surge Capability
- High Current Capability
- Types up to 1000V  $V_{RRM}$
- Silicon junction

**50Amp  
BUTTON DIODE  
50-1000 Volts**

### Maximum Ratings

Operating Temperature:  $-50^{\circ}\text{C}$  to  $+190^{\circ}\text{C}$   
 Storage Temperature:  $-50^{\circ}\text{C}$  to  $+190^{\circ}\text{C}$

BUTTON-AR



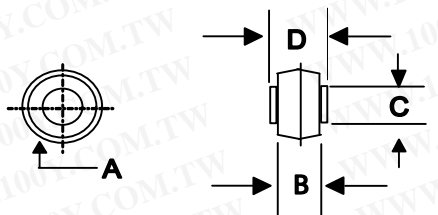
Part Number	Maximum Recurrent Peak Reverse Voltage	Maximum RMS Voltage	Maximum DC Blocking Voltage	Marking
AR(S)5001	50V	35V	50V	White
AR(S)5002	100V	70V	100V	Yellow
AR(S)5003	200V	140V	200V	Blue
AR(S)5004	400V	280V	400V	Silive
AR(S)5005	600V	420V	600V	Red
AR(S)5006	800V	560V	800V	Green
AR(S)5007	1000V	700V	1000V	Brown

DIM	INCHES		MM		NOTE
	MIN	MAX	MIN	MAX	
A	.380	.410	9.7	10.4	
B	.165	.185	4.20	4.70	
C	.215	.225	5.50	5.70	
D	.235	.250	6.00	6.40	

### Electrical Characteristics @ 25 °C Unless Otherwise Specified

Average Forward Current	$I_{F(AV)}$	50 A	$T_C = 150^{\circ}\text{C}$
Peak Forward Surge Current	$I_{FSM}$	800A	8.3ms, Halfsine
Maximum Instantaneous Forward Voltage *	$V_F$	1.0V	$I_{FM} = 50A;$ $T_J = 25^{\circ}\text{C}$
Maximum Instantaneous DC Reverse Current At Rated DC Blocking Voltage	$I_R$	10 uA 500 uA	$T_J = 25^{\circ}\text{C}$ $T_J = 150^{\circ}\text{C}$
Maximum thermal resistance, junction to Ambient	$R_{\theta JA}$	1.0 °C /w	
Typical Junction Capacitance	$C_j$	300pF	Measured at 1.0MHz, $V_R = 4.0V$

BUTTON-ARS



DIM	INCHES		MM		NOTE
	MIN	MAX	MIN	MAX	
A	.327	.347	8.30	8.90	
B	.165	.185	4.20	4.70	
C	.215	.225	5.50	5.70	
D	.235	.250	6.00	6.40	

\*Pulse Test: Pulse Width 300 usec, Duty Cycle 2%



勝特力材料 886-3-5753170  
勝特力电子(上海) 86-21-54151736  
勝特力电子(深圳) 86-755-83298787  
[Http://www.100y.com.tw](http://www.100y.com.tw)

# AR(S)5001 THRU AR(S)5007

FIG.1- MAXIMUM FORWARD CURRENT DERATING CURVE

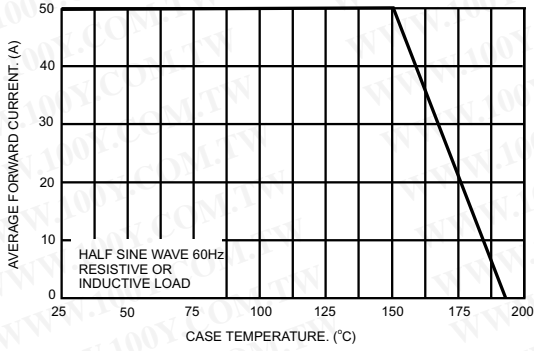


FIG.2- MAXIMUM NON-REPETITIVE PEAK FORWARD SURGE CURRENT

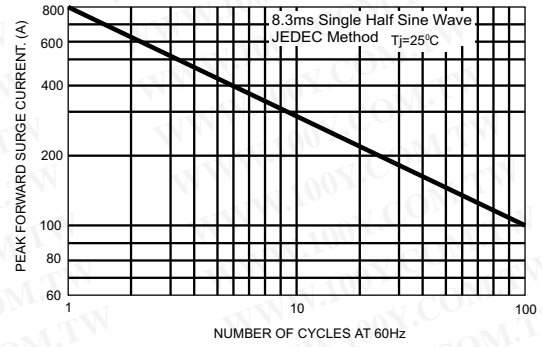


FIG.3- TYPICAL FORWARD CHARACTERISTICS

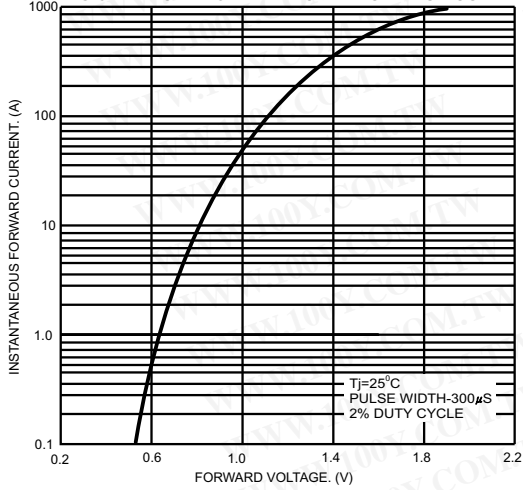


FIG.4- TYPICAL REVERSE CHARACTERISTICS

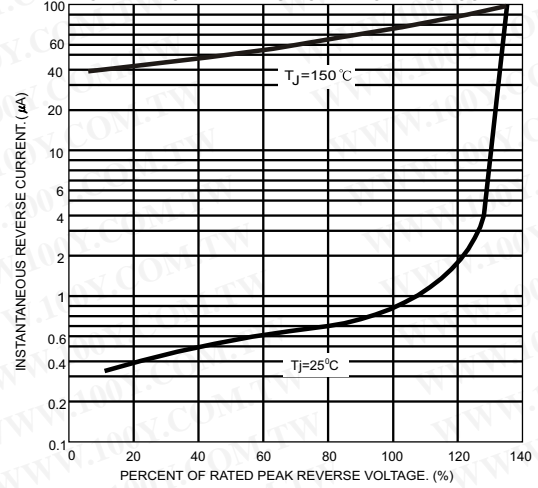


FIG.5- TYPICAL JUNCTION CAPACITANCE

