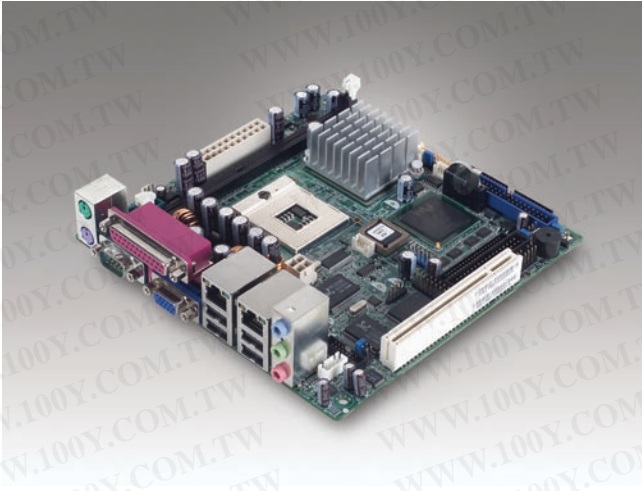


AIMB-240

Intel® Pentium® 4 Processor-based Mini-ITX Motherboard with 6 COM and Dual LAN



Features

- Supports Intel® µFC-PGA 478 Pentium® 4/Celeron® CPU
- Intel 852GME Chipset
- One DIMM socket supports up to 1 GB DDR 266/333 SDRAM
- 18-bit LVDS, on board DVI, DVI
- 5.1 CH Audio, TV-out
- Dual Realtek™ RTL8100C 10/100 Mbps LAN
- One PCI, one mini PCI, Type I/II CF
- Six COM, six USB 2.0, 8-bit GPIO

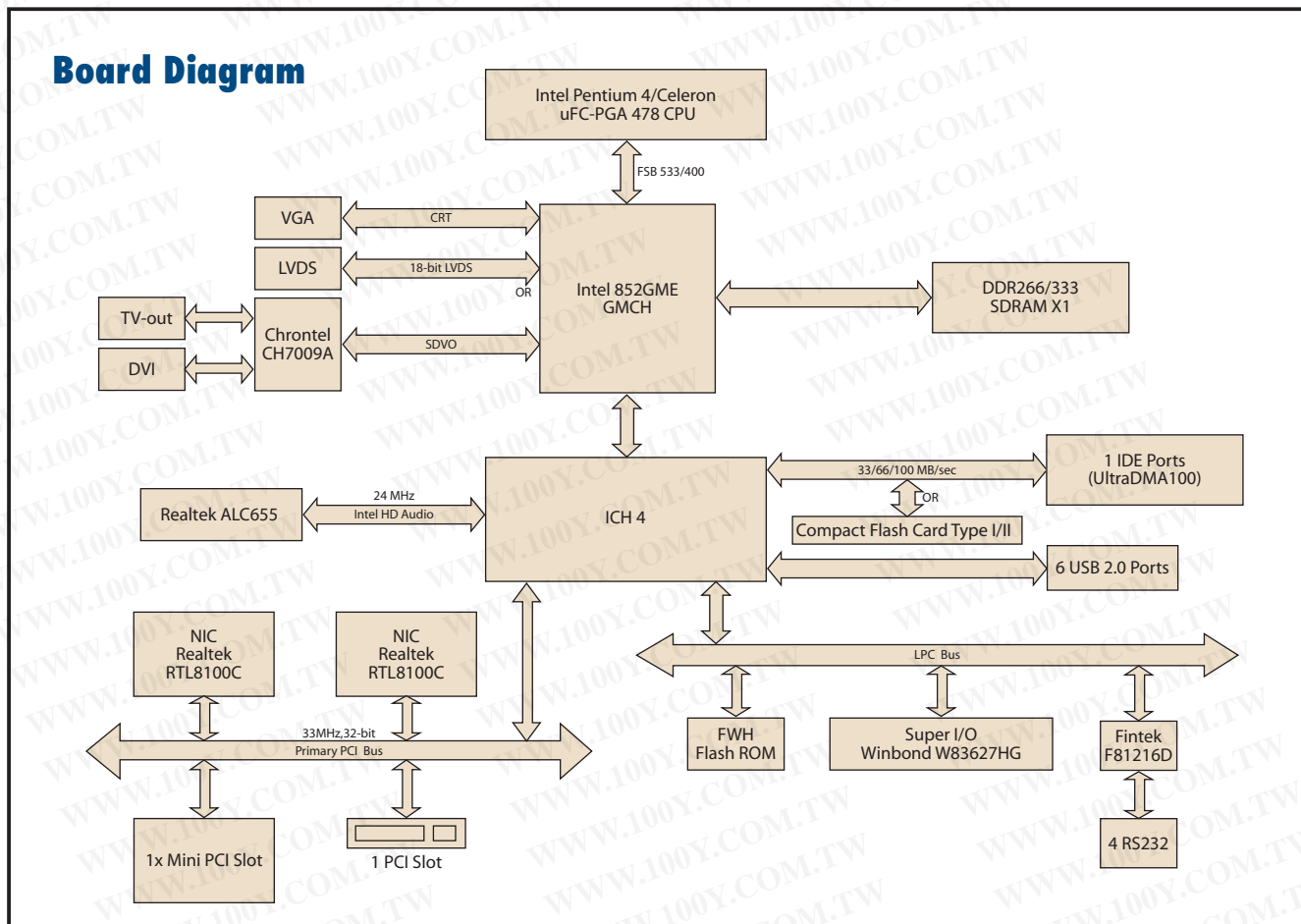
勝特力材料 886-3-5753170
勝特力电子(上海) 86-21-34970699
勝特力电子(深圳) 86-755-83298787
[Http://www.100y.com.tw](http://www.100y.com.tw)



Specifications

Processor System	CPU	Intel Pentium 4	Celeron	
	Max. Speed	2.8 GHz	2.8 GHz	
	Front Side Bus	400/533 MHz	400 MHz	
	L2 Cache	512 KB	256 KB	
	Chipset	Intel 852GME + ICH4		
Expansion Slot	BIOS	Award™ 4 Mb FWH		
	PCI	32-bit/33MHz, 1 slot		
Memory	Mini-PCI	32-bit/33MHz, 1 slot		
	Technology	DDR 266/333 SDRAM		
	Max. Capacity	1GB		
Graphics	Socket	184-pin DIMM x 1		
	Controller	Chipset Integrated VGA Controller		
	VRAM	Shared system memory up to 64 MB video memory		
	LVDS	Single channel 18-bit/Dual channel 36-bit LVDS		
	TV-Out	Supports both S-video and composite video		
	DVI	Chrontel® CH7009A TV encoder supports both NTSC/PAL		
	Dual Display	Chrontel CH7009A DVI transmitter up to 135M pixels/second		
Ethernet	Interface	CRT + LVDS, or DVI/TV-out + LVDS or CRT + DVI		
	Controller	10/100Base-T		
EIDE	Connector	LAN1: Realtek RTL8100C; LAN2: Realtek RTL8100C		
	Mode	RJ-45 x 2		
Rear I/O	Channel	EIDE (Ultra DMA 100)		
	VGA	2		
	Ethernet	2		
	USB	4 (USB 2.0 compliant)		
	Audio	Mic-In, Line-In, Line-Out		
	Parallel	1		
	Serial	1 (RS-232)		
Internal Connector	PS/2	2 (1 x keyboard and 1 x mouse)		
	LVDS	1		
	TV-Out	1		
	DVI	1		
	USB	2 (USB 2.0 compliant)		
	Serial	5 (one of RS-232/422/485)		
	IDE	2 (40/44-pin)		
	Compact Flash	1		
	IrDA	115k bps, IrDA 1.0 compliant		
	FDD	1		
Watchdog Timer	DIO	8-bit general purpose I/O for DI and DO		
	Output	System reset		
Power Requirement	Interval	Programmable 1 ~ 255 sec/ min		
	Typical	Pentium 4 2.4 GHz FSB533, 256 MB SDRAM		
Environment	+5 V	+3.3 V	+12 V	+5 VSB
	1.41 A	4.84 A	5.19 A	2 A
Physical Characteristics	Operating			
	Temperature	0 ~ 60° C (32 ~ 140° F)		
	Dimensions	170 mm x 170 mm (6.69" x 6.69")		

Board Diagram



Ordering Information

Part Number	VGA	DVI	LAN	CF	COM
AIMB-240F-00A1E	1	1	2	1	6

*CPU cooler is not included. Please use Advantech certified CPU coolers.

Bracket View



AIMB-240F-00A1E

勝特力材料 886-3-5753170
 勝特力电子(上海) 86-21-34970699
 勝特力电子(深圳) 86-755-83298787
[Http://www.100y.com.tw](http://www.100y.com.tw)

Packing List

Description	Quantity
AIMB-240 SBC	x 1
IDE HDD cable (40 pin)	x 1
IDE HDD cable (44 pin)	x 1
FDD cable	x 1
I/O port bracket	x 1
Startup manual	x 1
Driver CD	x 1
Serial cable (RS-232)	x 1
Serial cable (RS-422/485)	x 1

Accessories

Part Number	Description
1701400181	Cable kits for 4 serial ports
1703050306	TV-Out cable
1700100170	USB cable with two ports, 17.5 cm
1700000410	DVI cable
1750000880	CPU cooler supports max. Pentium 4 2.0 GHz
1750000882	CPU cooler supports max. Pentium 4 2.8 GHz