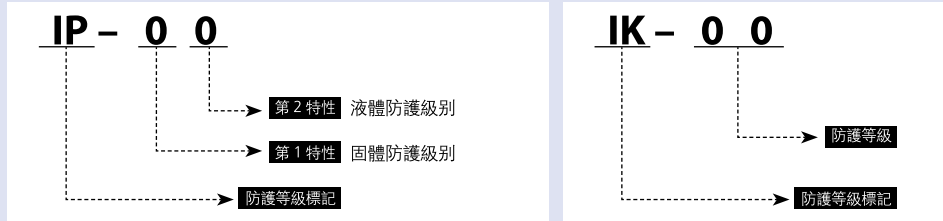


接線盒

Polycarbonate box

TIBOX IP.IK 防護等級 TIBOX Ingress Protection Grade

※TIBOX 產品的防水防塵等級為 IP66/67, 強度級別為 IK08
Water, dust-proof grade IP66/67, degree of strength IK08



國際電工協會 (IEC) 對電氣儀器或保護裝置的規定如下:

IEC (International Electrotechnical Commission) defines protection structure of electric instruments or protection boxes as follows

| 1 項 FIRST NUMBE | 固體防護級別 PROTECTION AGAINST SOLID | 2 項 SECOND NUMBE | 液體防護級別 PROTECTION AGAINST LIQUIDS | 1 項 IK CODE | 外部衝擊防護級別 PROTECTION AGAINST MECHANICAL IMPACT |
|-----------------------|--|------------------------|---|-------------------|--|
| IP | 測試 (TEST) | IP | 測試 (TEST) | IK | 測試 (TEST) |
| 0 | 無保護 No protection | | 無保護 No protection | 0 | 無保護 No protection |
| 1 | 超過 50mm 大小固體保護 Protection from sold with size of 50mm over (hand) | 1 | 防垂直降落液體 Protected from falling ctioncl verfcaly | 01 05 | 衝擊力小于 1 焦耳 Impact < 1joule |
| 2 | 超過 12mm 大小固體保護 Protected from solid with size of 12mm over(finger size) | 2 | 防 15 度傾斜角度降落液體 Protected from falling obect with 15 slant | 06 | 衝擊力等于 1 焦耳 Impact=1joule |
| 3 | 超過 2.5mm 大小固體保護 Protected from solid with size of 2.5mm over(tool, wire size) | 3 | 防 60 度傾斜角度降落液體 Protected from spray with up to 60° slant | 07 | 衝擊力小于 2 焦耳 Impact < 2joule |
| 4 | 超過 1mm 大小固體保護 Protected from solid with size of 1mm over(tool, wire size) | 4 | 防來自各個方向的潑濺 Protected from spray of all directions | 08 | 衝擊力小于 5 焦耳 Impact < 5joule |
| 5 | 防塵保護 Protected from dust | 5 | 防止低壓潑濺 Protected from water sprayed with low pressure | 09 | 衝擊力小于 10 焦耳 Impact < 10joule |
| 6 | 防塵完全保護 Protected from dust perfecty | 6 | 防止高壓潑濺 Protected from water sprayed with high pressure | 10 | 衝擊力小于 20 焦耳 Impact < 20joule |
| | | 7 | 浸在 15cm 到 1m 深的水中半小時防水保護 Protected from sink in water 15cm-1m depth for 30 minutes | | |
| | | 8 | 浸在具有壓力的水中長久防水保護 Protected from sink in water pressure for a long time | | |

接綫盒

Polycarbonate box

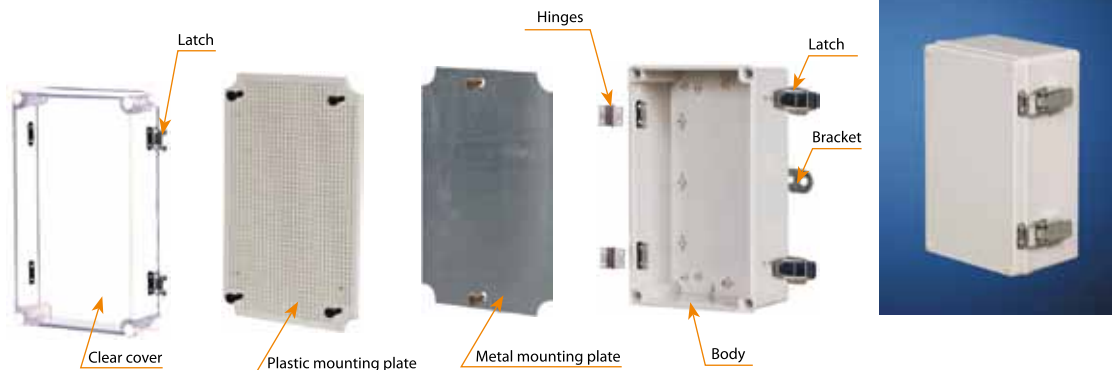


通過支點實現對雙層底板的固定，這種固定方式可以對底板的安裝深度以 1cm 為單位連續調節。
Double plate can be stabilized by the pivot, which is convenient to coordinate the mounting depth of plate conyinuosly at the rate of 1cm.

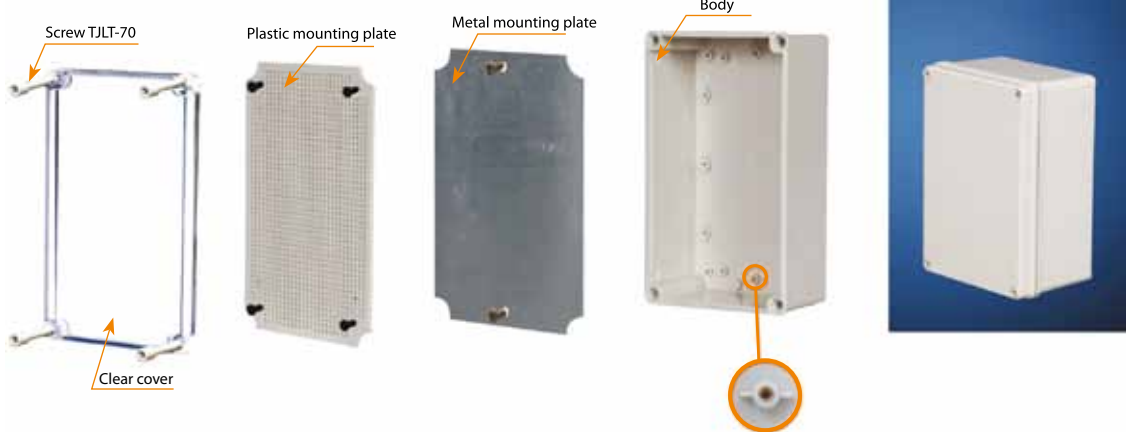
通過合頁實現對雙層底板的固定，這種固定方式不需要其他的固定裝置，便可以輕鬆的完成。
Double plate can be stabilized by the blade, which can be realized easily without any auxiliary tools.



TIBOX 鎖扣安裝組裝圖 Pictures for mounting TIBOX Latch



TIBOX 螺絲安裝組裝圖 Pictures for mounting TIBOX Screw



接線盒

Polycarbonate box



開關盒，按鈕盒
Switch Box, Button Box

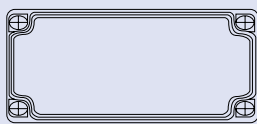
Plastic Enclosure-Switch Box

有極好的絕緣性能，抗化學腐蝕和抗機械擠壓的性能。達到高要求的 IP66 防護等級，所有的箱體都防塵、防水，能抗 80 度高溫。採用 ABS，PC 等材料制成，外形美觀，性能堅固。產品適用於小型終端機、按鈕盒、信號機、繼電器、計量器、通信用接線盒等設備。

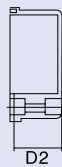
The enclosure is according to EN60529 standard, free from corrosin, compressive property and insulation, widely used in electronics, communications, fire fighting apparatus, control panels, terminal boxes, public accommodation, ship industry, food industry etc. We always give top priority to quality and safety, and your satisfaction is guaranteed. Protection degree:IP66 Temperature range:-40°C to +80°C ABS: Acrylonitrile Butadiene Styrene PC: Poly Carbonate



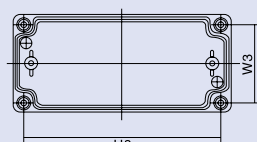
Stainless steel latch+Screw type



Cover



Allowable error ± 1mm



Body



| Dimension W H D | Screw type | | Stainless steel latch +Screw type | | Mounting plate | | Dimension | | |
|--------------------|---------------|---------------|--------------------------------------|----------------|----------------|---------|-----------|-----|--------|
| | Grey Cover | Clear Cover | Grey Cover | Clear Cover | Plastic | Metal | H3 | W3 | D1+D2 |
| 50 × 65 × 55 | DS-AG-0506 | DS-AT-0506 | DS-AGH-0506 | DS-ATH-0506 | — | — | 52 | 37 | 40+15 |
| 65 × 95 × 55 | DS-AG-0609 | DS-AT-0609 | DS-AGH-0609 | DS-ATH-0609 | — | — | 79 | 50 | 35+20 |
| 80 × 110 × 45 | DS-AG-0811-S | DS-AT-0811-S | DS-AGH-0811-S | DS-ATH-0811-S | DS-0811P | DS-0811 | 92 | 62 | 25+20 |
| 80 × 110 × 60 | DS-AG-0811-1S | DS-AG-0811-1S | DS-AGH-0811-1S | DS-ATH-0811-1S | DS-0811P | DS-0811 | 92 | 62 | 35+25 |
| 80 × 110 × 70 | DS-AG-0811 | DS-AT-0811 | DS-AGH-0811 | DS-ATH-0811 | DS-0811P | DS-0811 | 92 | 62 | 50+20 |
| 80 × 130 × 70 | DS-AG-0813 | DS-AT-0813 | DS-AGH-0813 | DS-ATH-0813 | DS-0813P | DS-0813 | 112 | 62 | 50+20 |
| 80 × 160 × 55 | DS-AG-0816-S | DS-AT-0816-S | DS-AGH-0816-S | DS-ATH-0816-S | DS-0816P | DS-0816 | 148 | 68 | 40+15 |
| 80 × 160 × 90 | DS-AG-0816 | DS-AT-0816 | DS-AGH-0816 | DS-ATH-0816 | DS-0816P | DS-0816 | 148 | 68 | 75+15 |
| 80 × 180 × 70 | DS-AG-0818 | DS-AT-0818 | DS-AGH-0818 | DS-ATH-0818 | DS-0818P | DS-0818 | 162 | 62 | 50+20 |
| 80 × 250 × 70 | DS-AG-0825 | DS-AT-0825 | DS-AGH-0825 | DS-ATH-0825 | DS-0825P | DS-0825 | 232 | 62 | 50+20 |
| 80 × 110 × 85 | DS-AG-0811-1 | DS-AT-0811-1 | DS-AGH-0811-1 | DS-ATH-0811-1 | DS-0811P | DS-0811 | 92 | 62 | 50+35 |
| 80 × 130 × 85 | DS-AG-0813-1 | DS-AT-0813-1 | DS-AGH-0813-1 | DS-ATH-0813-1 | DS-0813P | DS-0813 | 112 | 62 | 50+35 |
| 80 × 180 × 85 | DS-AG-0818-1 | DS-AT-0818-1 | DS-AGH-0818-1 | DS-ATH-0818-1 | DS-0818P | DS-0818 | 162 | 62 | 50+35 |
| 80 × 250 × 85 | DS-AG-0825-1 | DS-AT-0825-1 | DS-AGH-0825-1 | DS-ATH-0825-1 | DS-0825P | DS-0825 | 232 | 62 | 50+35 |
| 125 × 125 × 75 | DS-AG-1212-S | DS-AT-1212-S | DS-AGH-1212-S | DS-ATH-1212-S | DS-1212P | DS-1212 | 105 | 105 | 55+20 |
| 125 × 125 × 100 | DS-AG-1212 | DS-AT-1212 | DS-AGH-1212 | DS-ATH-1212 | DS-1212P | DS-1212 | 105 | 105 | 80+20 |
| 125 × 175 × 75 | DS-AG-1217 | DS-AT-1217 | DS-AGH-1217 | DS-ATH-1217 | DS-1217P | DS-1217 | 157 | 109 | 50+25 |
| 125 × 175 × 100 | DS-AG-1217-1 | DS-AT-1217-1 | DS-AGH-1217-1 | DS-ATH-1217-1 | DS-1217P | DS-1217 | 157 | 109 | 50+50 |
| 140 × 170 × 95 | DS-AG-1417 | DS-AT-1417 | DS-AGH-1417 | DS-ATH-1417 | DS-1417P | DS-1417 | 152 | 122 | 75+20 |
| 150 × 200 × 100 | DS-AG-1520 | DS-AT-1520 | DS-AGH-1520 | DS-ATH-1520 | DS-1520P | DS-1520 | 182 | 132 | 80+20 |
| 150 × 200 × 130 | DS-AG-1520-1 | DS-AT-1520-1 | DS-AGH-1520-1 | DS-ATH-1520-1 | DS-1520P | DS-1520 | 182 | 132 | 80+50 |
| 150 × 250 × 100 | DS-AG-1525 | DS-AT-1525 | DS-AGH-1525 | DS-ATH-1525 | DS-1525P | DS-1525 | 232 | 132 | 80+20 |
| 150 × 250 × 130 | DS-AG-1525-1 | DS-AT-1525-1 | DS-AGH-1525-1 | DS-ATH-1525-1 | DS-1525P | DS-1525 | 232 | 132 | 80+50 |
| 200 × 200 × 130 | DS-AG-2020 | DS-AT-2020 | DS-AGH-2020 | DS-ATH-2020 | DS-2020P | DS-2020 | 182 | 182 | 110+20 |
| 200 × 200 × 95 | DS-AG-2020-S | DS-AT-2020-1 | DS-AGH-2020-S | DS-ATH-2020-S | DS-2020P | DS-2020 | 182 | 182 | 75+20 |
| 175 × 175 × 100 | DS-AG-1717-1 | DS-AT-1717-1 | DS-AGH-1717-1 | DS-ATH-1717-1 | DS-1717P | DS-1717 | 157 | 157 | 50+50 |
| 175 × 250 × 75 | DS-AG-1725 | DS-AT-1725 | DS-AGH-1725 | DS-ATH-1725 | DS-1725P | DS-1725 | 232 | 157 | 50+25 |
| 175 × 250 × 100 | DS-AG-1725-1 | DS-AT-1725-1 | DS-AGH-1725-1 | DS-ATH-1725-1 | DS-1725P | DS-1725 | 232 | 157 | 50+50 |
| 75 × 125 × 75 | DS-AG-0712 | DS-AT-0712 | DS-AGH-0712 | DS-ATH-0712 | DS-0712P | DS-0712 | 107 | 57 | 50+25 |
| 75 × 125 × 100 | DS-AG-0712-1 | DS-AT-0712-1 | DS-AGH-0712-1 | DS-ATH-0712-1 | DS-0712P | DS-0712 | 107 | 57 | 50+50 |
| 140 × 230 × 90 | DS-AG-1423 | DS-AT-1423 | DS-AGH-1423 | DS-ATH-1423 | DS-1423P | DS-1423 | 212 | 122 | 70+20 |
| 175 × 175 × 75 | DS-AG-1717 | DS-AT-1717 | DS-AGH-1717 | DS-ATH-1717 | DS-1717P | DS-1717 | 157 | 157 | 50+25 |

接線盒

Polycarbonate box



安裝底板
Mounting Plate



盒蓋螺絲
Cover Screw



盒蓋
Cover

Plastic Enclosure

| Dimension | Grey Cover | Transparent Cover | Metal Mounting plate | Dimension | | |
|-----------------|------------|-------------------|----------------------|-----------|-----|-------|
| | | | | H3 | W3 | D1+D2 |
| 100 × 100 × 50 | TB-AG-1010 | TB-AT-1010 | DS-1010 | 80 | 80 | 40+14 |
| 120 × 80 × 50 | TB-AG-0812 | TB-AT-0812 | DS-0812 | 100 | 67 | 40+14 |
| 150 × 110 × 70 | TB-AG-1115 | TB-AT-1115 | DS-1115 | 137 | 98 | 49+25 |
| 190 × 140 × 70 | TB-AG-1419 | TB-AT-1419 | DS-1419 | 176 | 127 | 51+25 |
| 240 × 190 × 90 | TB-AG-1924 | TB-AT-1924 | DS-1924 | 220 | 170 | 70+26 |
| 300 × 220 × 120 | TB-AG-2230 | TB-AT-2230 | DS-2230 | 280 | 200 | 76+50 |
| 380 × 300 × 120 | TB-AG-3038 | TB-AT-3038 | DS-3038 | 332 | 253 | 78+50 |

接線盒

Polycarbonate box



在熱銷種的塑料盒產品中，NICE BOX 的功能和作業性最為優越，齊全，便于使用。

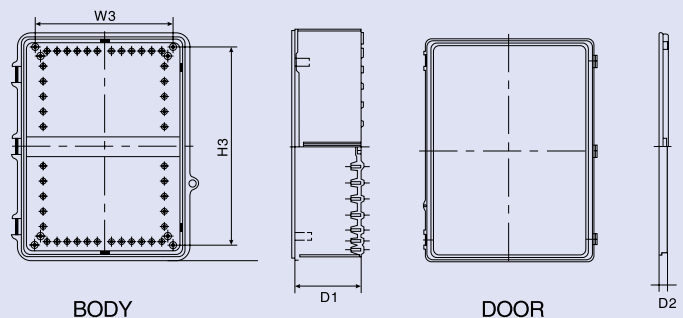
Out of the plastic boxes which are selling at present, It's ability is most excvlient, and the competitivepover is mush higher but the low price is at the level of steel Box. The products were added the electromagnetlo intorference(EMI) and preventiing substance of the static electricity, and the strong point was given to the relevant mechanical protection of electricity, electron and etc.

The Uses are possible according to the size, size such as, small Terminal Box, Signal, Terminal and Pull, Control Box etc.

Plastic Enclosure - Plastic latch+hinge type

| Dimension W H D | Plastic latch+hinge type | | Mounting plate | | Dimension | | |
|--------------------|--------------------------|-------------------|----------------|---------|-----------|-----|--------|
| | Grey Cover | Transparent Cover | Plastic | Metal | H3 | W3 | D1+D2 |
| 100 × 150 × 70 | NE-AG-1015 | NE-AT-1015 | DS-1015P | DS-1015 | 116 | 66 | 50+20 |
| 100 × 200 × 70 | NE-AG-1020 | NE-AT-1020 | DS-1020P | DS-1020 | 165 | 65 | 50+20 |
| 150 × 150 × 90 | NE-AG-1515 | NE-AT-1515 | DS-1515P | DS-1515 | 120 | 115 | 70+20 |
| 170 × 220 × 110 | NE-AG-1722 | NE-AT-1722 | DS-1722P | DS-1722 | 186 | 136 | 80+30 |
| 190 × 290 × 140 | NE-AG-1929 | NE-AT-1929 | DS-1929P | DS-1929 | 254 | 156 | 110+30 |
| 300 × 300 × 140 | NE-AG-3030-S | NE-AT-3030-S | DS-3030P | DS-3030 | 280 | 280 | 107+30 |
| 290 × 390 × 160 | NE-AG-2939 | NE-AT-2939 | DS-2939P | DS-2939 | 361 | 251 | 132+28 |
| 250 × 350 × 150 | NE-AG-2535 | NE-AT-2535 | DS-2535P | DS-2535 | 312 | 212 | 120+30 |
| 365 × 465 × 180 | NE-AG-3546 | NE-AT-3546 | DS-3546P | DS-3546 | 433 | 323 | 150+30 |
| 400 × 500 × 200 | NE-AG-4050 | — | DS-4050P | DS-4050 | 448 | 346 | 170+30 |
| 396 × 595 × 220 | NE-AG-4060 | — | DS-4060P | DS-4060 | 545 | 347 | 190+30 |

Dimension (允許誤差: ± 1mm)
(Allowable tolerance: ± 1mm)



接線盒

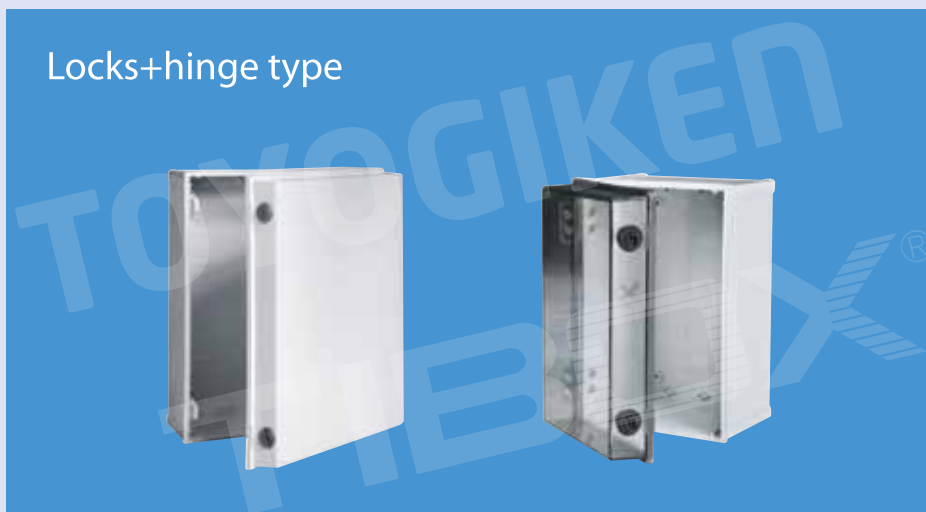
Polycarbonate box

Plastic latch+Hinge type



| Dimension (尺寸) W×H×D | Grey door Model | Clear door Model | Dimension | | |
|-------------------------|--------------------|---------------------|-----------|-----|--------|
| | | | H3 | W3 | D1+D2 |
| 200×300×150 | NE-AG-2030-S | NE-AT-2030-S | 260 | 160 | 120+30 |
| 200×300×180 | NE-AG-2030 | NE-AT-2030 | 270 | 170 | 130+50 |
| 300×300×180 | NE-AG-3030 | NE-AT-3030 | 270 | 270 | 130+50 |
| 300×400×180 | NE-AG-3040 | NE-AT-3040 | 370 | 270 | 130+50 |

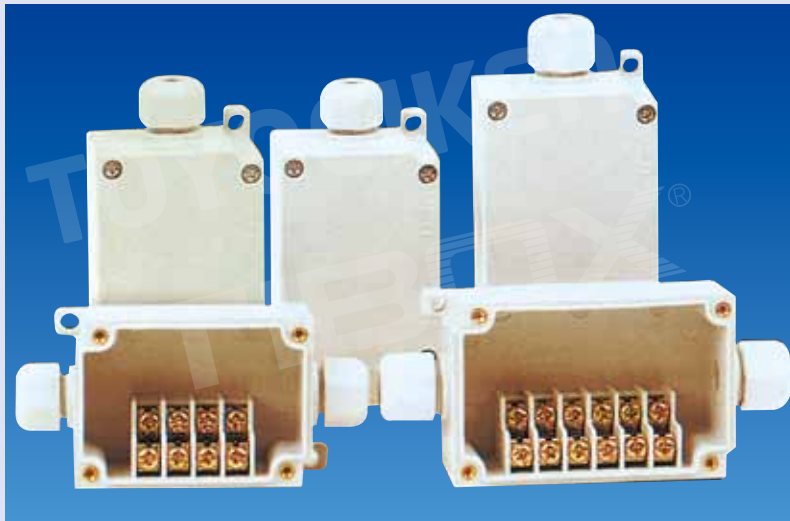
Locks+hinge type



| Dimension (尺寸) W×H×D | Grey door Model | Clear door Model | Dimension | | |
|-------------------------|--------------------|---------------------|-----------|-----|--------|
| | | | H3 | W3 | D1+D2 |
| 200×300×180 | NE-KG-2030 | NE-KT-2030 | 270 | 170 | 130+50 |
| 300×300×180 | NE-KG-3030 | NE-KT-3030 | 270 | 270 | 130+50 |
| 300×400×180 | NE-KG-3040 | NE-KT-3040 | 370 | 270 | 130+50 |

接線盒

Polycarbonate box



* DS-PG-20P *DS-PG-15P

* 變熱型溫度: -40°C ~ +130°C

● 材質: Polyester

● 根據用途, 生產 AC、ABS、PC 材質的產品。

● 顏色: 蓋 (灰色)、主機 (灰色)

* Temperature range: -40°C ~ +130°C

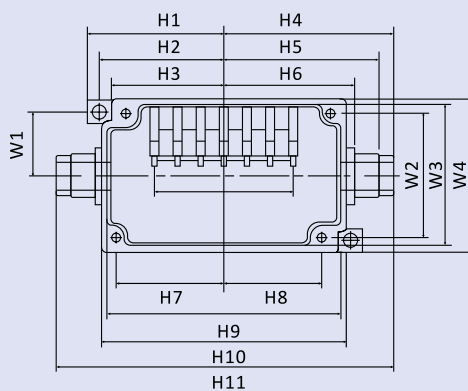
● Material: Polyester

● According to its usage, products being made of ABS, PC, or PC.

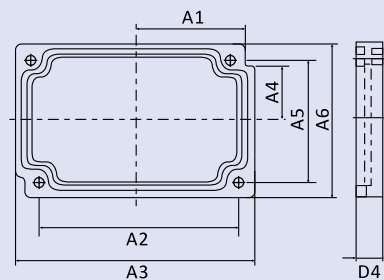
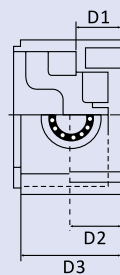
● Color: cover(grey); body(grey).

| 型號 TYPE | 長 × 寬 × 高 W × D × H (Unit: mm/inch 包括蓋子) |
|------------|--|
| DS-MTB-4P | 70 × 50 × 40 / 2.76 × 1.97 × 1.57 |
| DS-MTB-6P | 80 × 55 × 40 / 3.15 × 2.17 × 1.57 |
| DS-PG-10P | 110 × 75 × 40 / 3.74 × 3.74 × 1.57 |
| DS-PG-15P | 100 × 200 × 70 / 3.94 × 7.87 × 2.76 |
| DS-PG-20P | 160 × 170 × 70 / 6.3 × 6.69 × 2.76 |

| Model/Division | H1 | H2 | H3 | H4 | H5 | H6 | H7 | H8 | H9 | H10 | H11 | W1 | W2 | W3 | W4 | D1 | D2 | D3 | D4 | A1 | A2 | A3 | A4 | A5 | A6 |
|----------------|------|------|------|------|------|------|------|------|----|-----|-----|------|----|----|----|------|----|----|----|------|----|----|------|----|----|
| DS-MTB-6P | 47.5 | 43.5 | 39.5 | 60.5 | 53.5 | 44.5 | 37.5 | 34.5 | 81 | 85 | 121 | 23.5 | 45 | 51 | 55 | 14.5 | 16 | 32 | 8 | 39.5 | 72 | 85 | 20.5 | 45 | 55 |
| DS-MTB-4P | 40 | 36 | 32 | 50 | 45 | 37 | 30 | 27 | 66 | 70 | 100 | 21 | 40 | 46 | 50 | 14.5 | 16 | 32 | 8 | 32 | 57 | 70 | 18 | 40 | 50 |



BODY



COVER

接線盒

Polycarbonate box

Ratings

| | |
|---------------------------|--------------------------|
| Rated voltage | AC/DC 250V |
| Rated current | 15A |
| Insulation resistance | 100M Ω or above |
| Withstand voltage | AC2000V 1min |
| Applicable wire | 1.25mm ² /MAX |
| Standard clamping torque | 1.2N.m(12Kgf.cm) |
| Protective structure | IP-65(IEC529) |
| Applicable cable diameter | ϕ 3.5- ϕ 9 |
| Operating temperature | -25°C ~ +60°C |

Specifications

| | |
|-------------------|---------------------|
| Box terminal body | Nylon 6 Color5Y7/1 |
| Lid | PBT Color5Y7/1 |
| Terminal | screw M3 \times 8 |

Outstanding Environmental Performance

The body resin used by the BOXTC series is a reinforced PBT, which is PBT resin with high environmental resistance mixed with glass fiber. The material was chosen based on the data obtained through many long term running tests of the products on various industrial machinery including machine tools. You can expect reliable operation of the models of this series under a wide range of environmental conditions.

Results of chemical resistance tests.

| Test solution | Judgment | Test solution | Judgment |
|---------------|----------|---------------|----------|
| Weak acid | ◎ | Alcohol | ◎ |
| Strong acid | △ | Ester | ○ |
| Oil | ◎ | Gasoline | ◎ |
| Acetone | ○ | Weak alkali | ○ |
| Benzene | ○ | Strong alkali | × |

◎.....Highly resistant and least likely to deteriorate

○.....Minimal weight change and usable depending on conditions

△.....Some weight and dimensional changes and usable for a short time

×.....Not usable due to swelling or dissolution

接線盒

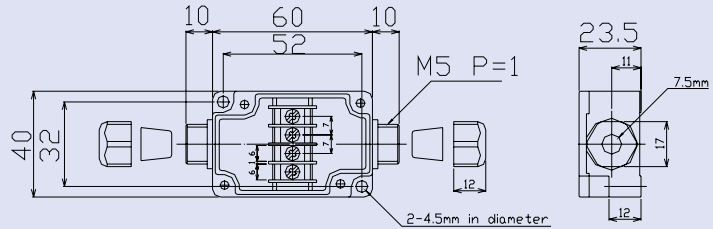
Polycarbonate box

Two each of rubber sleeves and Cable clamps are supplied as accessories for BOXTC Series .

BOXTC-4 (IP65)

AC/DC 250V 15A

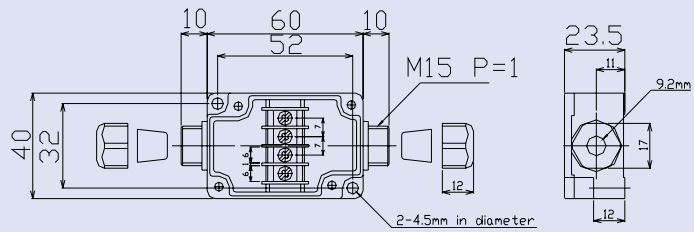
Recommended cable diameter $\phi 3.5 \sim \phi 7.3$



BOXTC-4A (IP65)

AC/DC 250V 15A

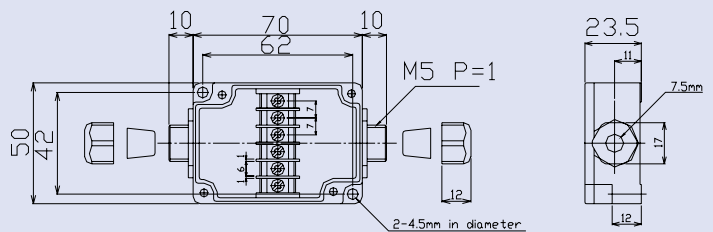
Recommended cable diameter $\phi 4.0 \sim \phi 5.3, \phi 6.0 \sim \phi 9.0$



BOXTC-6 (IP65)

AC/DC 250V 15A

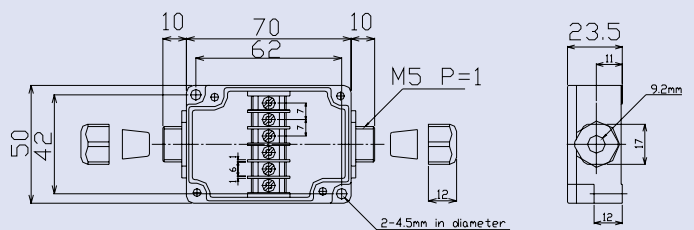
Recommended cable diameter $\phi 3.5 \sim \phi 7.3$



BOXTC-6A (IP65)

AC/DC 250V 15A

Recommended cable diameter $\phi 4.0 \sim \phi 5.3, \phi 6.0 \sim \phi 9.0$



玻璃纖維箱 Polyester Enclosure



玻璃纤维箱

MIP 系列是新型的開關箱，它由玻璃纖維強化多元酯所製造，達到 IP66、IK9 等級。多元酯的特性是它本身混合 30% 玻璃纖維來強化，使它達到一個高電阻和機械剛度 (IK9) 與重量約 1/3 的金屬箱的效果，同金屬箱相比，MIP 系列具有重量更輕，更適應腐蝕、潮濕的環境等優點。

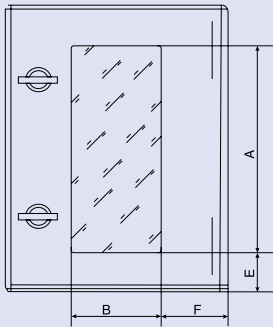
Polyester Enclosure

MIP series is a new type, made of polyesters. The characteristics of the polyesters is its own mix 30% fibre glass, make it reach high resistance and mechanical stiffness, have the same effect of metal enclosure which is 3times heavier than it. Compared with metal enclosure, TIP series is lighter, more adequate for corrosion and dankish environment.

| Dimension | | | Model 型號 | | Metal Mounting plate 底板 | Dimension | | | |
|-----------|-----|-----|------------------|-------------------------|----------------------------|-----------|-----|-----|-----|
| W | H | D | Grey Door 灰色門 | Transparent Door 透明門 | | A | B | C | D |
| 250 | 300 | 140 | MIP-325 | MIP-325PT | MP-325 | 310 | 150 | 248 | 175 |
| 300 | 400 | 200 | MIP-43 | MIP-43PT | MP-43 | 280 | 120 | 60 | 90 |
| 400 | 400 | 200 | MIP-44 | MIP-44PT | MP-44 | 280 | 220 | 60 | 90 |
| 400 | 500 | 200 | MIP-54 | MIP-54PT | MP-54 | 380 | 220 | 60 | 90 |
| 400 | 600 | 230 | MIP-64 | MIP-64PT | MP-64 | 480 | 220 | 60 | 90 |
| 500 | 600 | 230 | MIP-65 | MIP-65PT | MP-65 | 480 | 320 | 60 | 90 |
| 600 | 800 | 300 | MIP-86 | MIP-86PT | MP-86 | 680 | 420 | 60 | 90 |

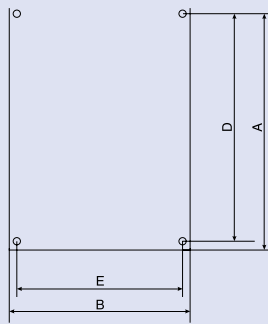
玻璃纖維箱 Polyester Enclosure

透明門
Transparent Door



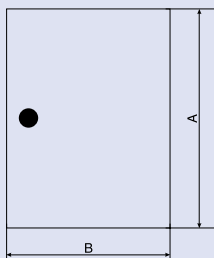
| Model | A | B | E | F |
|---------|-----|-----|----|----|
| MIP-325 | 220 | 115 | 35 | 75 |
| MIP-43 | 281 | 141 | 52 | 80 |
| MIP-44 | 281 | 221 | 52 | 90 |
| MIP-54 | 381 | 221 | 52 | 90 |
| MIP-64 | 481 | 221 | 52 | 90 |
| MIP-65 | 481 | 321 | 52 | 90 |
| MIP-86 | 681 | 421 | 52 | 90 |

底板
Mounting plate



| Model | A | B | E | F |
|--------|-----|-----|-----|-----|
| MP-325 | 268 | 213 | 248 | 175 |
| MP-43 | 358 | 260 | 338 | 222 |
| MP-44 | 358 | 360 | 338 | 322 |
| MP-54 | 458 | 360 | 438 | 322 |
| MP-64 | 558 | 360 | 538 | 322 |
| MP-65 | 558 | 460 | 538 | 422 |
| MP-86 | 754 | 556 | 734 | 518 |

裏門
Inner door



| Model | A | B |
|--------|-----|-----|
| MIP-43 | 366 | 258 |
| MIP-44 | 366 | 358 |
| MIP-54 | 466 | 358 |
| MIP-64 | 566 | 358 |
| MIP-65 | 566 | 458 |
| MIP-86 | 766 | 658 |