

# TSOP

## THIN SMALL OUTLINE PACKAGE

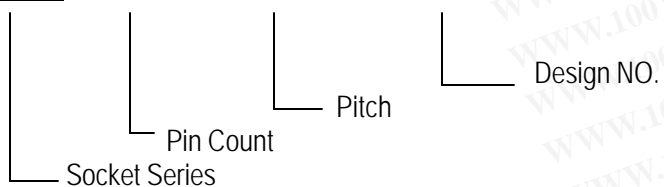
勝特力材料 886-3-5753170  
勝特力电子(上海) 86-21-54151736  
勝特力电子(深圳) 86-755-83298787  
[Http://www.100y.com.tw](http://www.100y.com.tw)

### Applicable IC/TSOP

## OPEN TOP TYPE SOCKETS

### ORDERING PROCEDURE

OTS - (     ) - (     ) - (     )



### SPECIFICATIONS

Contact resistance: Initial 30mΩ, 50mΩ or 100mΩ (At 10mA)

Maximum voltage: AC700V RMS (for 1 minute)

\* Below 0.5mm Pitch  
AC500V RMS (for 1 minute)

Insulation resistance: 1,000MΩ or higher (At DC 500V)

Rated current: 1A

Operating temperature range: -60°C ~ +150°C

Terminal strength against pulling: 0.5kg (1 minute)

Insertion: Min. 5,000 times, 10,000 times (Mechanical)



### MATERIAL

Body: PEI, PES

Contact: BeCu, Au plating (Ni-base)

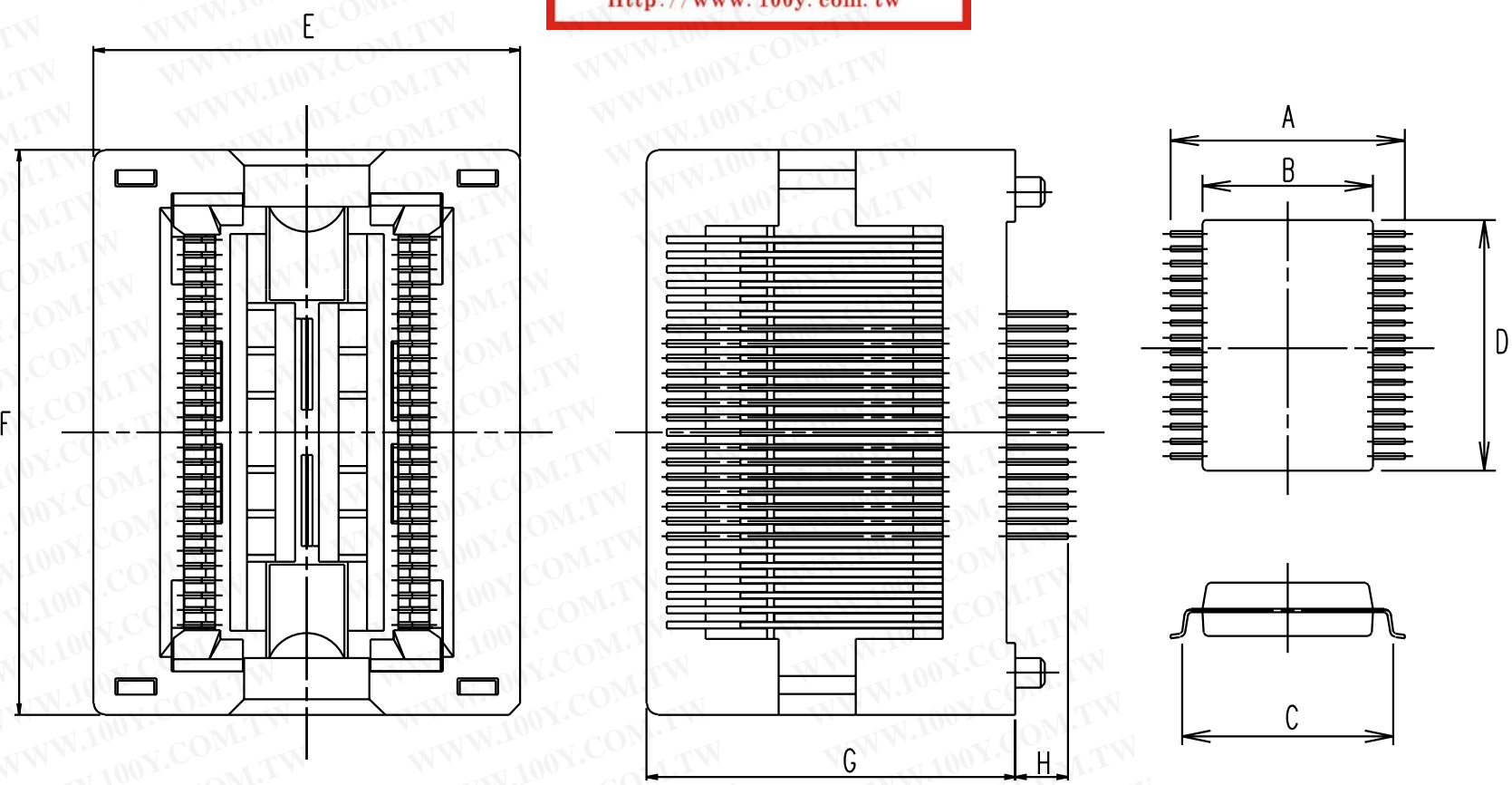
## APPLICABLE IC DIMENSIONS & SOCKET DIMENSIONS

### TSOP TYPE I (NON-CARRIER TYPE ONE-POINT CONTACT)

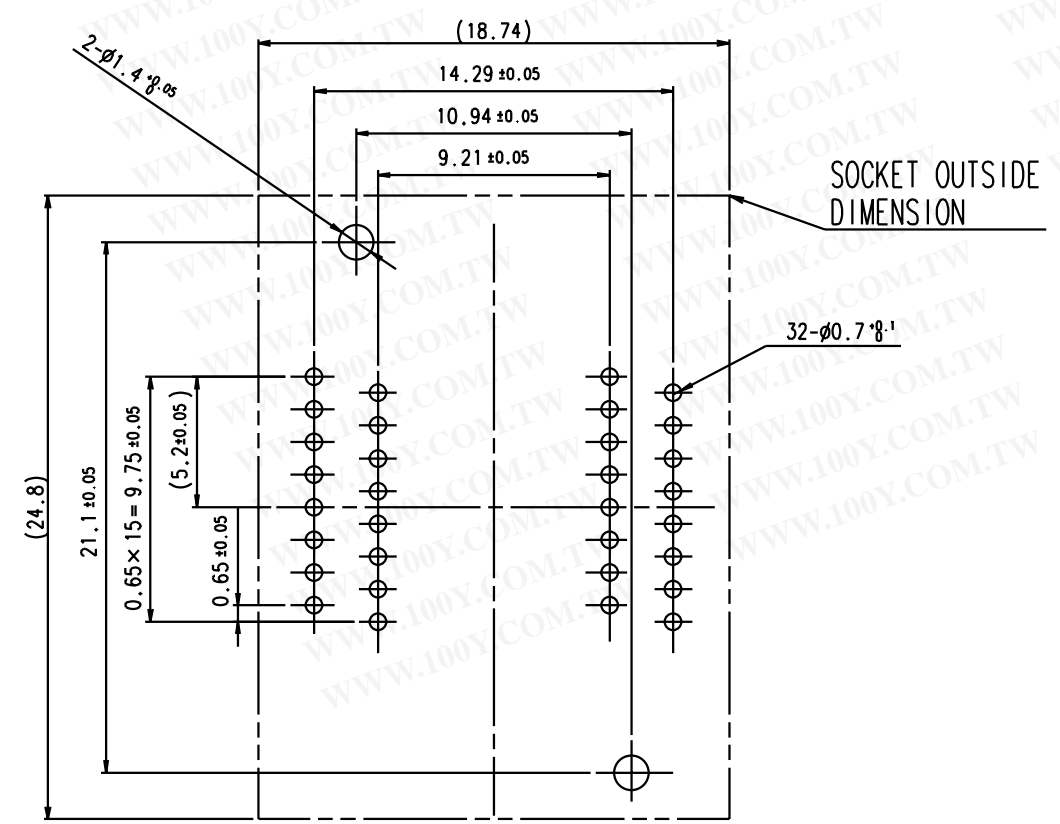
Unit: mm (in)

| PART NO.       | PIN COUNT | PITCH             | ACTUATION FORCE | APPLICABLE IC DIMENSIONS (REF.) |                  |                 |                     | OUTSIDE DIMENSIONS (REF.) |                 |                 |                | REMARKS |
|----------------|-----------|-------------------|-----------------|---------------------------------|------------------|-----------------|---------------------|---------------------------|-----------------|-----------------|----------------|---------|
|                |           |                   |                 | A                               | B                | C               | D                   | E                         | F               | G               | H              |         |
| OTS-28-0.55-03 | 28        | 0.55<br>(21.7mil) | max<br>1.4kg    | 13.4<br>(0.528)                 | 11.8<br>(0.465)  | 12.4<br>(0.488) | 8.2<br>(0.323)      | 33.6<br>(1.323)           | 14.7<br>(0.579) | 13.5<br>(0.531) | 3.4<br>(0.133) | 8X13.4  |
| OTS-32-0.5-01  | 32        | 0.5<br>(19.6mil)  | max<br>1.5kg    | 14<br>(0.551)                   | 12.4<br>(0.488)  | 13<br>(0.511)   | 8.2<br>(0.323)      | 33.7<br>(1.326)           | 14.7<br>(0.579) | 13.5<br>(0.531) | 3.4<br>(0.133) | 8X14    |
| OTS-32-0.5-08  | 32        | 0.5<br>(19.6mil)  | max<br>1.2kg    | 20<br>(0.787)                   | 18.4<br>(0.724)  | 19<br>(0.748)   | 8.2<br>(0.323)      | 40<br>(1.574)             | 14<br>(0.551)   | 14.3<br>(0.563) | 3.2<br>(0.126) | 8X20    |
| OTS-40-0.5-01  | 40        | 0.5<br>(19.6mil)  | max<br>2.0kg    | 20<br>(0.787)                   | 18.4<br>(0.724)  | 19<br>(0.748)   | 10.2<br>(0.402)     | 40<br>(1.574)             | 16.7<br>(0.657) | 13.5<br>(0.531) | 3.4<br>(0.133) | 10X20   |
| OTS-48-0.4-01  | 48        | 0.4<br>(15.7mil)  | max<br>2.0kg    | 14<br>(0.551)                   | 12.38<br>(0.487) | 13.2<br>(0.516) | 12.28<br>(0.483)    | 34<br>(1.339)             | 16<br>(0.630)   | 14.3<br>(0.563) | 3.2<br>(0.126) | 12X14   |
| OTS-48-0.5-01  | 48        | 0.5<br>(19.6mil)  | max<br>1.2kg    | 20<br>(0.787)                   | 18.4<br>(0.724)  | 19<br>(0.748)   | 12.2<br>(0.480)     | 40<br>(1.574)             | 17.6<br>(0.693) | 14.3<br>(0.563) | 3.2<br>(0.126) | 12X20   |
| OTS-48-0.5-05  | 48        | 0.5<br>(19.6mil)  | max<br>1.8kg    | 20<br>(0.787)                   | 18.4<br>(0.724)  | 19<br>(0.748)   | max12.35<br>(0.486) | 38<br>(1.496)             | 20<br>(0.787)   | 14.3<br>(0.563) | 3.2<br>(0.126) | 12X20   |
| OTS-48-0.5-08  | 48        | 0.5<br>(19.6mil)  | max<br>1.8kg    | 20<br>(0.787)                   | 18.4<br>(0.724)  | 19<br>(0.748)   | max12.3<br>(0.484)  | 38<br>(1.496)             | 20<br>(0.787)   | 14.3<br>(0.563) | 3.2<br>(0.126) | 12X20   |
| OTS-56-0.5-01  | 56        | 0.5<br>(19.6mil)  | max<br>1.2kg    | 20<br>(0.787)                   | 18.4<br>(0.724)  | 19<br>(0.748)   | 14<br>(0.551)       | 40<br>(1.574)             | 19.6<br>(0.771) | 14.3<br>(0.563) | 3.6<br>(0.141) | 14X20   |

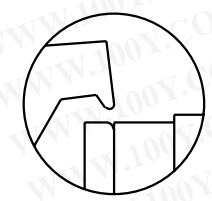
勝特力材料 886-3-5753170  
 勝特力电子(上海) 86-21-54151736  
 勝特力电子(深圳) 86-755-83298787  
[Http://www.100y.com.tw](http://www.100y.com.tw)



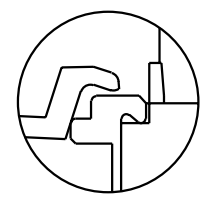
OTS-56-0.65  
 (REFERENCE ONLY)



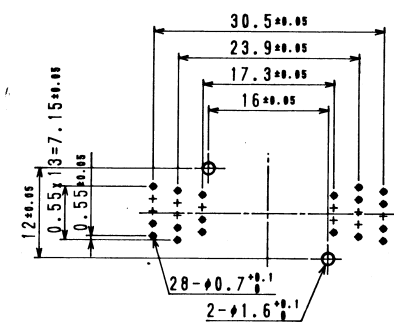
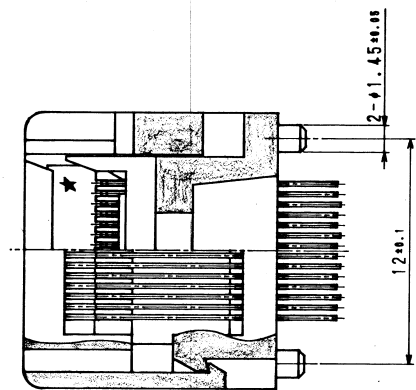
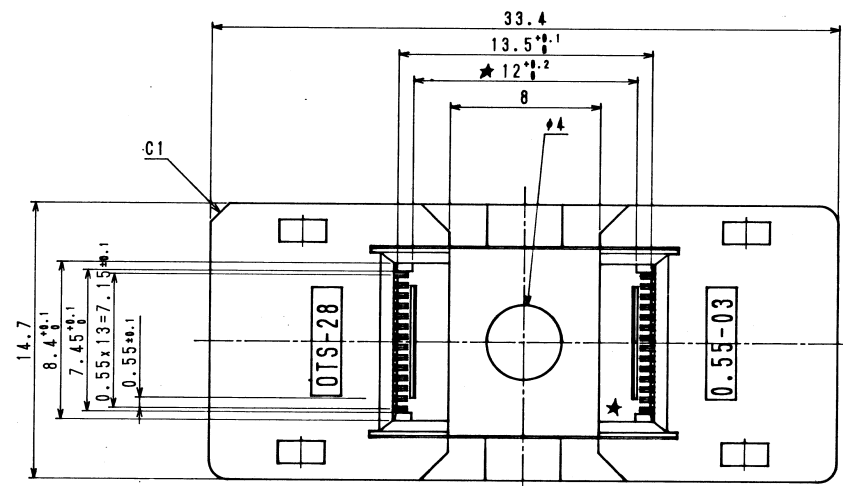
OTS-56-0.65  
 (REFERENCE ONLY)



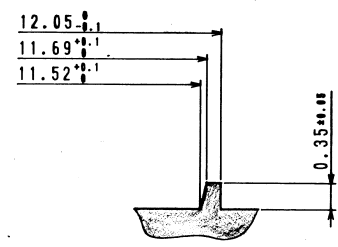
ONE POINT CONTACT  
 (REFERENCE ONLY)



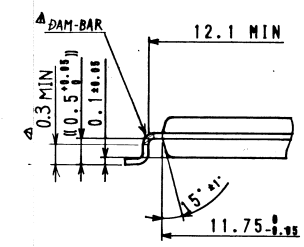
PINCH CONTACT  
 (REFERENCE ONLY)



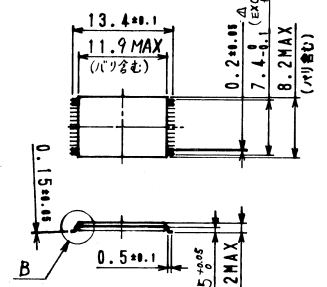
プリント基板取り付け穴位置 (S=2:1)  
P.C.B. PATTERN (TOP VIEW)



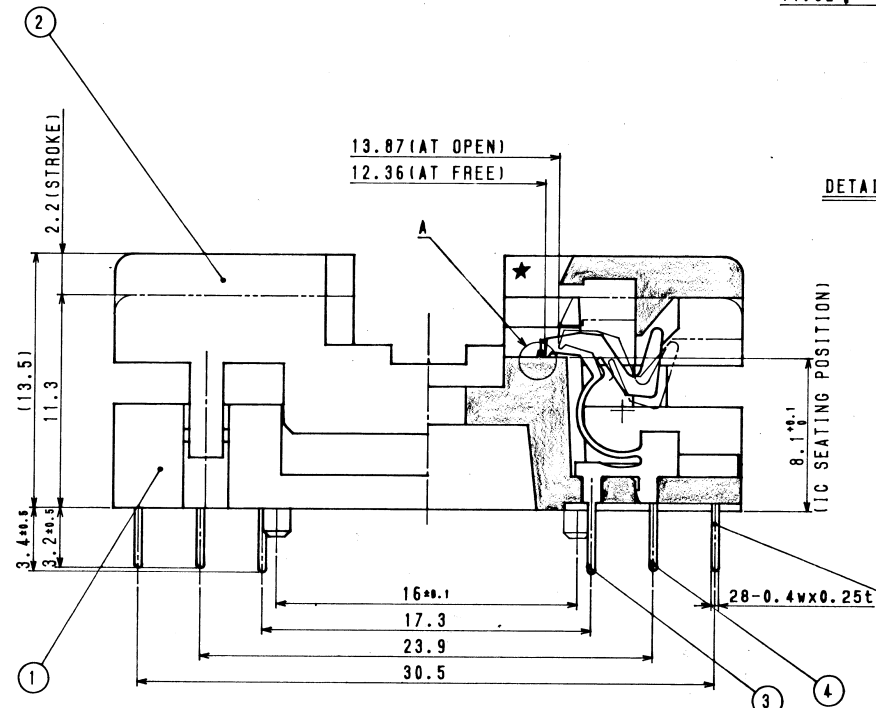
DETAIL OF A (S=20:1)



DETAIL OF B (S=20:1)



適合デバイス寸法 (S=2:1)  
MATCHING DEVICE



| SPECIFICATION                  |                                  |
|--------------------------------|----------------------------------|
| CONTACT RESISTANCE<br>接触抵抗     | 50 mΩ or less at 10 mA (INITIAL) |
| WELCHT VOLTAGE WITH TIME<br>電圧 | 500V. A.C for 1 minute           |
| INSULATION RESISTANCE<br>絶縁抵抗  | 1000 MΩ or more at 50V.D.C       |
| RATED CURRENT<br>定格電流          | 1A                               |
| OPERATING TEMPERATURE<br>使用温度  | -65℃ - 150℃                      |
| RETENTION FORCE<br>端子保持強度      | 0.5kg for 1 minute               |
| INSULATOR<br>絶縁体               | 10000 cycle (MECHANICAL)         |
| ACTION FORCE<br>カバ作動力          | MAX. 1.4kg                       |

| 行号<br>SYM. | 顧客品番<br>CUSTOMER'S PART NO. | 図番<br>DWG. NO. | 品名<br>NAME               | 材質<br>MAT'L | 個数<br>QTY | 備考<br>REMARKS |
|------------|-----------------------------|----------------|--------------------------|-------------|-----------|---------------|
| 5          | OTS-32-0.5-02-006           | 55-110-759-01  | CONTACT<br>FP用コンタクト "KC" | BeCu        | 10        |               |
| 4          | OTS-32-0.5-02-005           | 55-110-758-01  | CONTACT<br>FP用コンタクト "KB" | BeCu        | 10        |               |
| 3          | OTS-32-0.5-02-004           | 55-110-757-01  | CONTACT<br>FP用コンタクト "KA" | BeCu        | 8         |               |
| 2          | OTS-28-0.55-03-002          | 57-299-010-01  | カバー COVER                | PEI         | 1         |               |
| 1          | OTS-28-0.55-03-001          | 57-299-009-01  | 本体 BODY                  | PEI         | 1         |               |

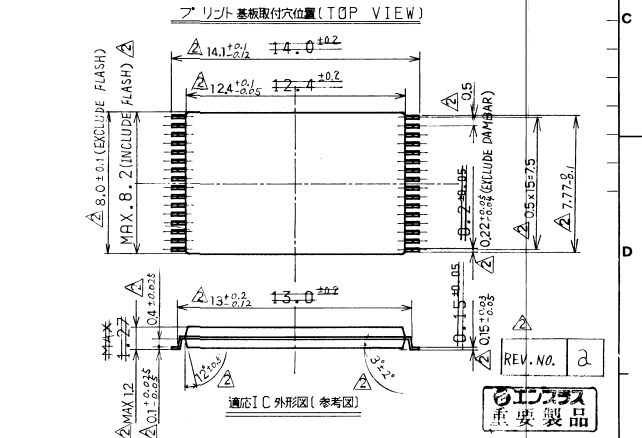
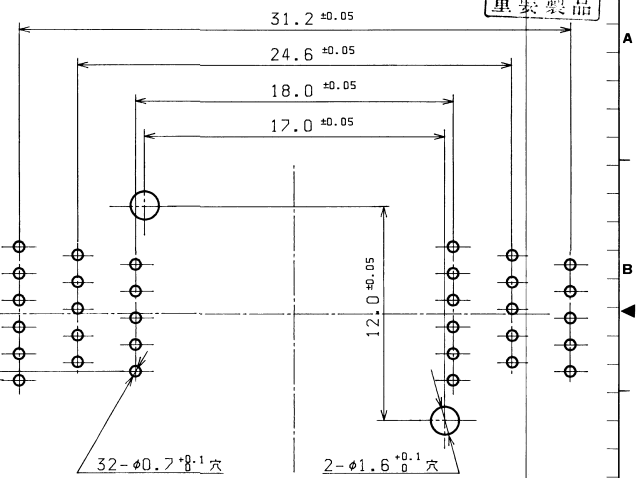
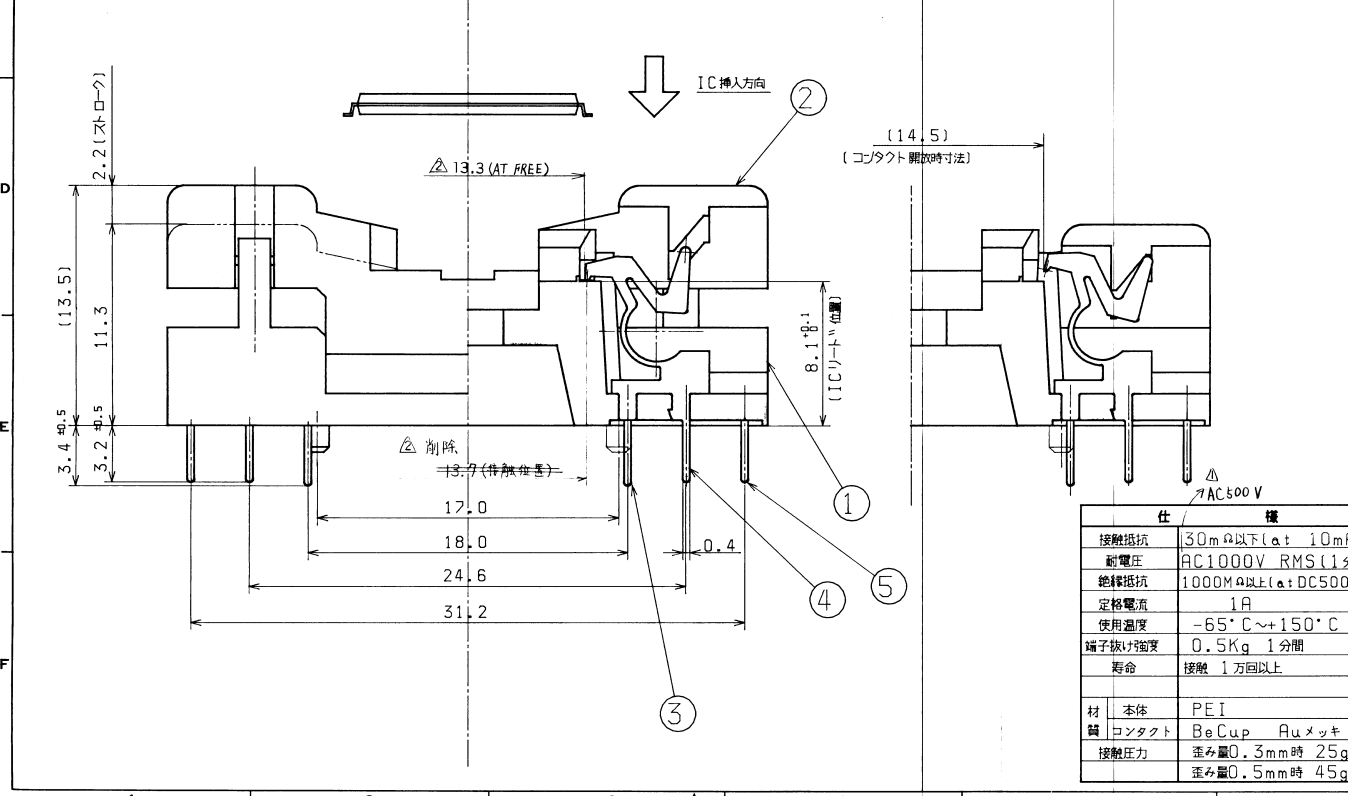
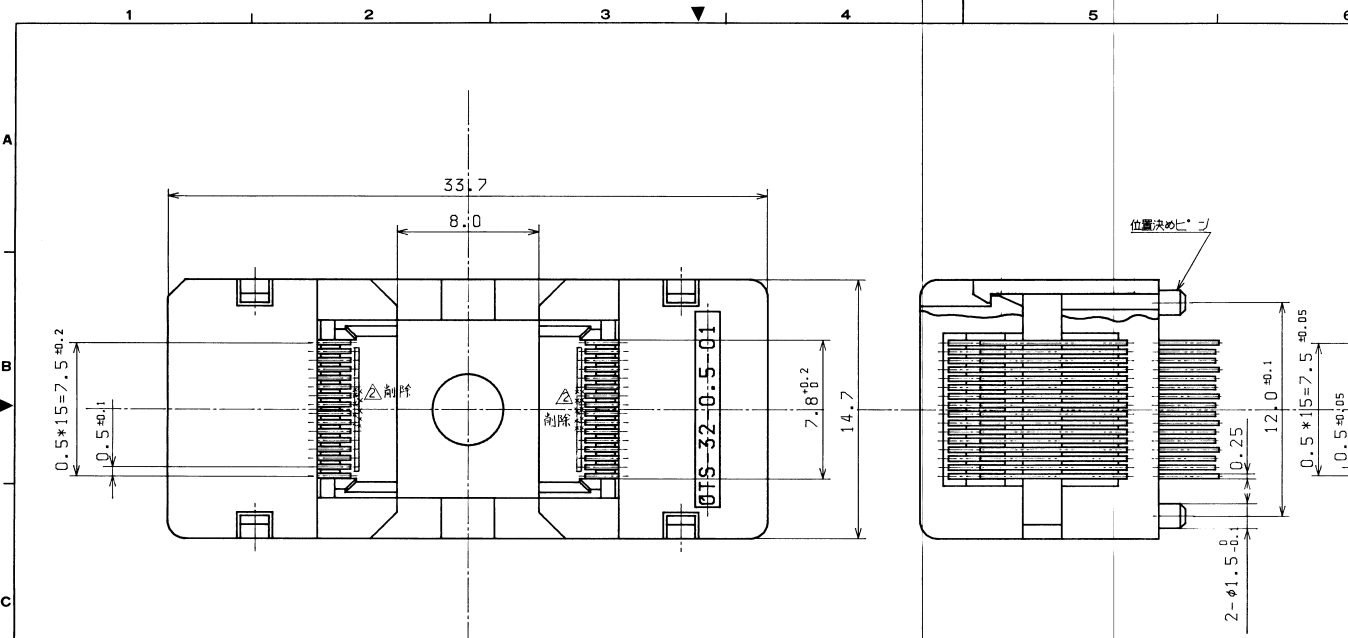
  

|                    |              |                    |                 |
|--------------------|--------------|--------------------|-----------------|
| 批准者<br>APPROVED BY | T. KASHIWAZI | 品名<br>NAME         | OTS-28-0.55-03  |
| 検査者<br>CHECKED BY  | M. FUKUNAGA  | 図番<br>DRAWING NO.  | 55-024-102-01/1 |
| 設計者<br>DESIGNED BY | T. SEKIGUCHI | 発行年月日<br>ISSUED ON | '93.10.13       |
| 製図者<br>DRAWN BY    |              | 訂正箇所<br>REVISIONS  |                 |
| 検査年月日<br>DATE      |              | 発行年月日<br>ISSUED ON |                 |

改訂図  
No. 1

| 符号位置<br>SYM. ZONE | 図面<br>サイズ<br>SIZE | 図番<br>DWG. NO. | 品名<br>NAME | 材質<br>MAT'L | 個数<br>QTY | 備考<br>REMARKS |
|-------------------|-------------------|----------------|------------|-------------|-----------|---------------|
|-------------------|-------------------|----------------|------------|-------------|-----------|---------------|

重要製品



重要製品

|   |                   |               |           |       |    |  |
|---|-------------------|---------------|-----------|-------|----|--|
| 5 | OTS-32-C003       | 55-110-414-01 | FP用/P CM0 | BeCuP | 11 |  |
| 4 | OTS-32-C002       | 55-110-413-01 | FP用/P CLO | BeCuP | 10 |  |
| 3 | OTS-32-C001       | 55-110-412-01 | FP用/P CKO | BeCuP | 11 |  |
| 2 | OTS-32-0.5-01-002 | 55-299-823-01 | カハ-       | PEI   | 1  |  |
| 1 | OTS-32-0.5-01-001 | 55-299-822-01 | 本体        | PEI   | 1  |  |

| 符号 | 品番          | 図番                  | 品名        | 材質                       | 個数   | 備考 |
|----|-------------|---------------------|-----------|--------------------------|------|----|
| △  | 198 B 24    | 82,83,C7x3,C8,D2,D4 | MACHINE   | 一般公差                     | ±0.3 |    |
| △  | 29 B 28 E-6 | D7x4,D8-5,E2,E7x2   | GATE      | GENERAL TOLERANCES       |      |    |
| △  | DATE        | 訂正箇所                | EJECTION  | 材質                       | 上記   |    |
| △  | REVISIONS   | 番号                  | CAVITIES  | MATERIAL                 |      |    |
| △  | SIGN        | 署名                  | FINISH    | 機械・型番 USED FOR           |      |    |
| △  | APPROVED BY | 承認者                 | TREATMENT | 客先品番 CUSTOMER'S PART NO. |      |    |
| △  | CHECKED BY  | 検査者                 | WEIGHT    |                          |      |    |
| △  | DESIGNED BY | 設計者                 |           |                          |      |    |
| △  | DRAWN BY    | 製図者                 |           |                          |      |    |
| △  | ISSUED ON   | 作成年月日               |           |                          |      |    |

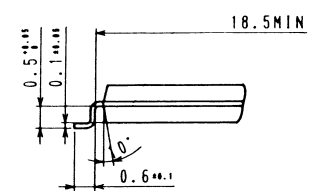
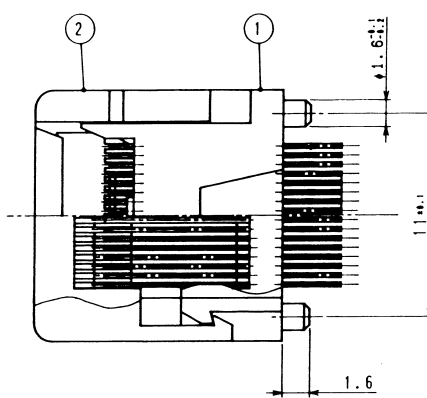
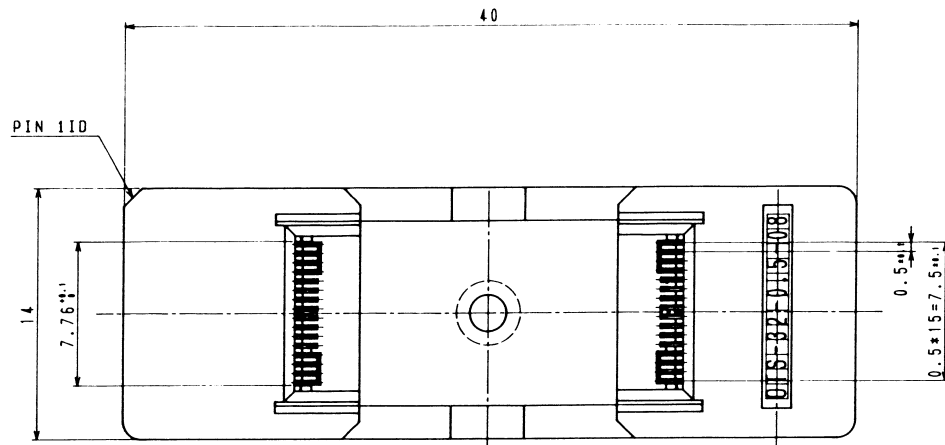
  

|      |           |             |
|------|-----------|-------------|
| 材    | 本体        | PEI         |
| 質    | コンタクト     | BeCuP Auメッキ |
| 接触圧力 | 径み量0.3mm時 | 25qN        |
|      | 径み量0.5mm時 | 45qN        |

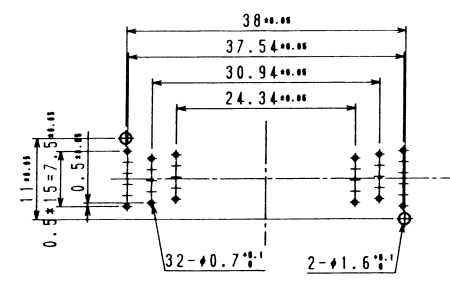
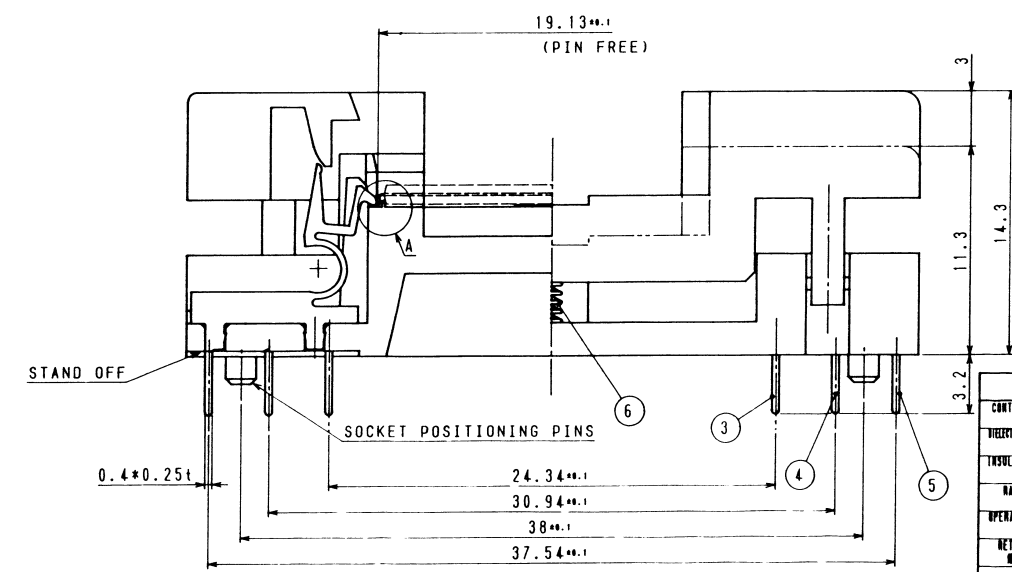
  

|    |               |          |     |
|----|---------------|----------|-----|
| 品名 | OTS-32-0.5-01 | 尺数 SCALE | 5:1 |
| 図名 | ICソケット Assy   |          |     |
| 図番 | 55-024-005-01 |          |     |
| 図名 | DRAWING NO.   |          |     |

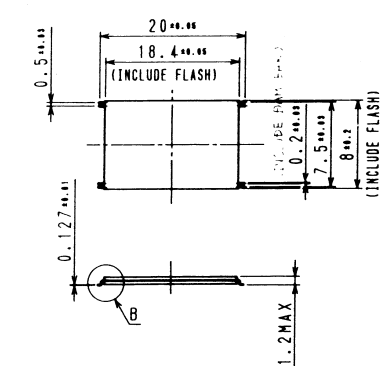
241017-01/01 部材表  
SCALE FOR MICRO FILM  
50  
O  
L  
K 5  
J 3  
I  
H  
G  
F  
E  
D  
C  
B  
A  
部門 技 数  
SECTION SHEETS



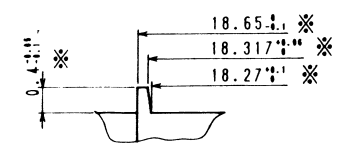
DETAIL OF B(10:1)



プリント基板取り付け穴位置 (TOP VIEW) S= 2:1 P.C.B PATTERN



混合デバイス寸法 S=10:1 MATCHING DEVICE



DETAIL OF A(10:1)

| SPECIFICATION            |                                  |
|--------------------------|----------------------------------|
| 仕様                       |                                  |
| CONTACT RESISTANCE       | 50 mΩ or less at 10 mA (INITIAL) |
| HELYTIC RESISTANCE VALUE | 500V.A.C for a minute            |
| INSULATION RESISTANCE    | 1000MΩ or more at 500V.D.C       |
| RATED CURRENT            | 1A                               |
| OPERATING TEMPERATURE    | -65℃ ~ 150℃                      |
| RETENTION FORCE          | 0.5kg for a minute               |
| INSULATION TESTION       | 10000 cycle (MECHANICAL)         |
| ACTUAL FORCE             | MAX. 1.2kg                       |

| NO | SYM | 顧客品番               | 部品名         | 材料   | 数量 | 備考 |
|----|-----|--------------------|-------------|------|----|----|
| 6  |     | OTS-26-1.27-06-006 | COIL SPRING | SUS  | 2  |    |
| 5  | △   | OTS-48-0.5-01-005  | CONTACT     | BeCu | ±0 |    |
| 4  | △   | OTS-48-0.5-01-004  | CONTACT     | BeCu | 10 |    |
| 3  | △   | OTS-48-0.5-01-003  | CONTACT     | BeCu | ±2 |    |
| 2  |     | OTS-32-0.5-00-002  | カバー COVER   | PEI  | 1  |    |
| 1  |     | OTS-32-0.5-00-001  | 本体 BODY     | PEI  | 1  |    |

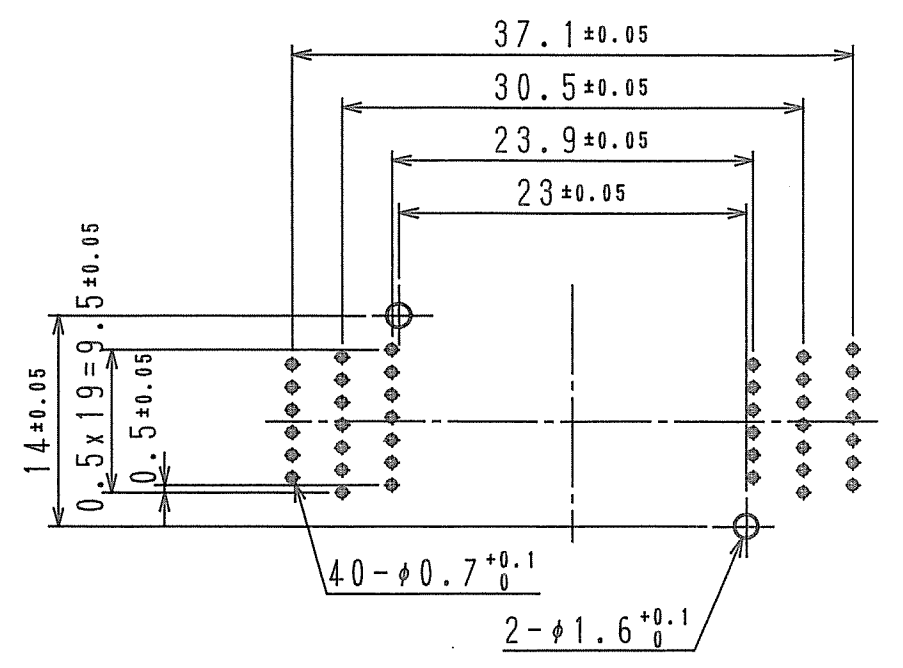
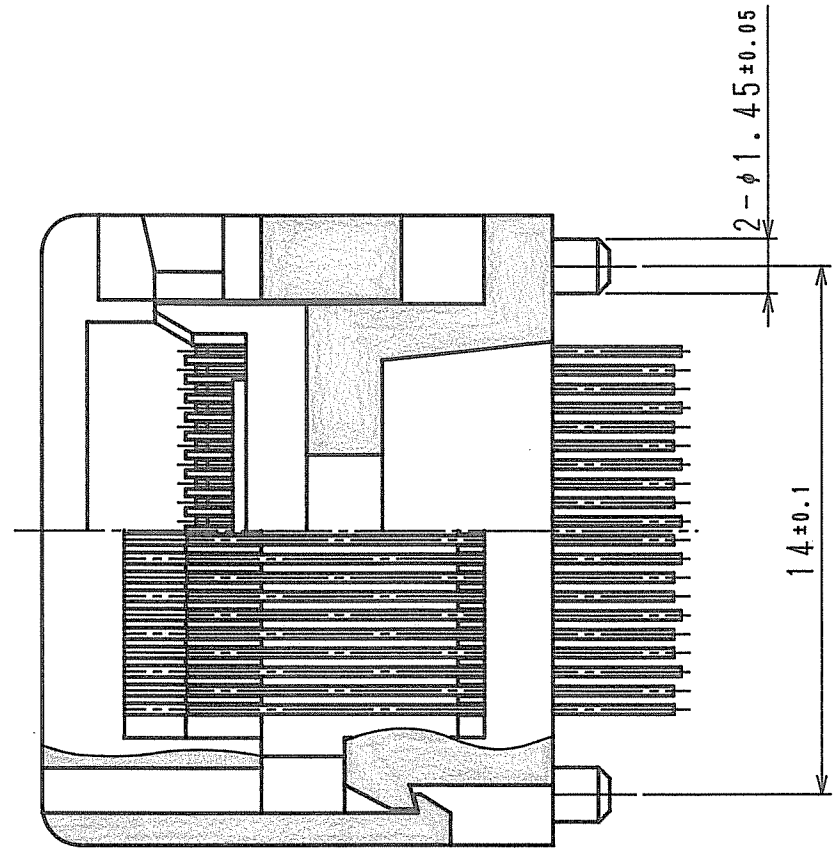
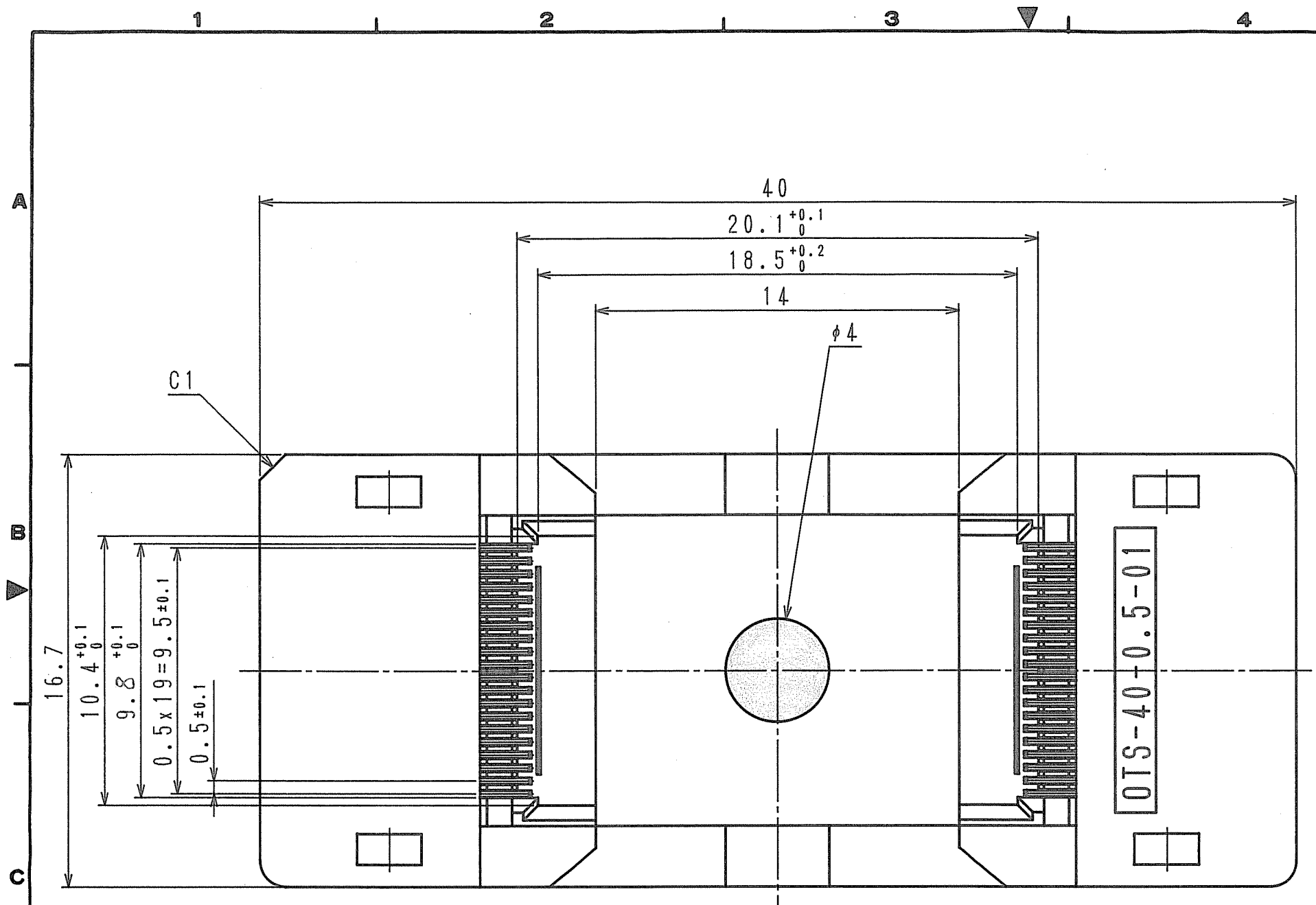
NOTES  
 1) 減マーク寸法は、デバイスの機械寸法を変更。  
 2) ...

2.0 x 4.0 x 16 X 3  
 DATE  
 REVISIONS

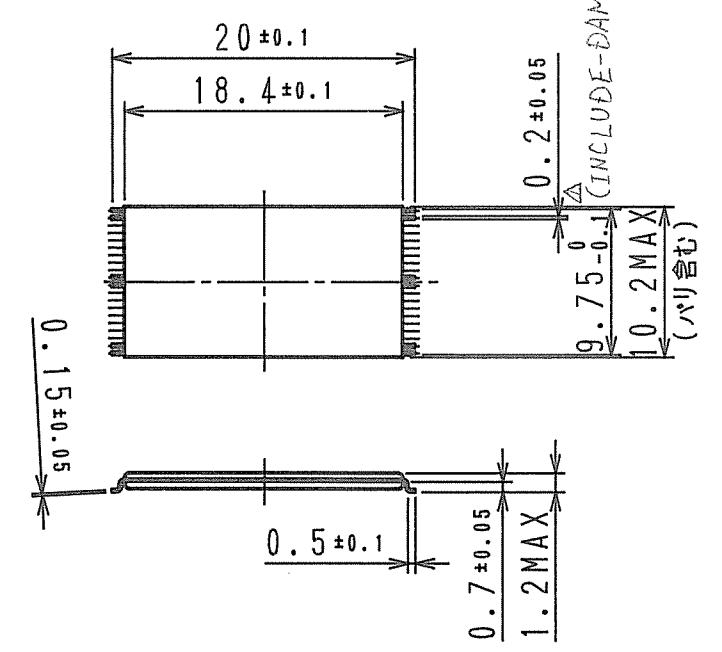
DESIGNED BY T. YAMADA  
 DRAWN BY  
 CHECKED BY  
 APPROVED BY

CUSTOMER'S PART NO  
 NAME  
 MAT'L  
 QTY  
 REMARKS  
 ±0.3  
 P.C. SCALE 5:1  
 REV NO 01

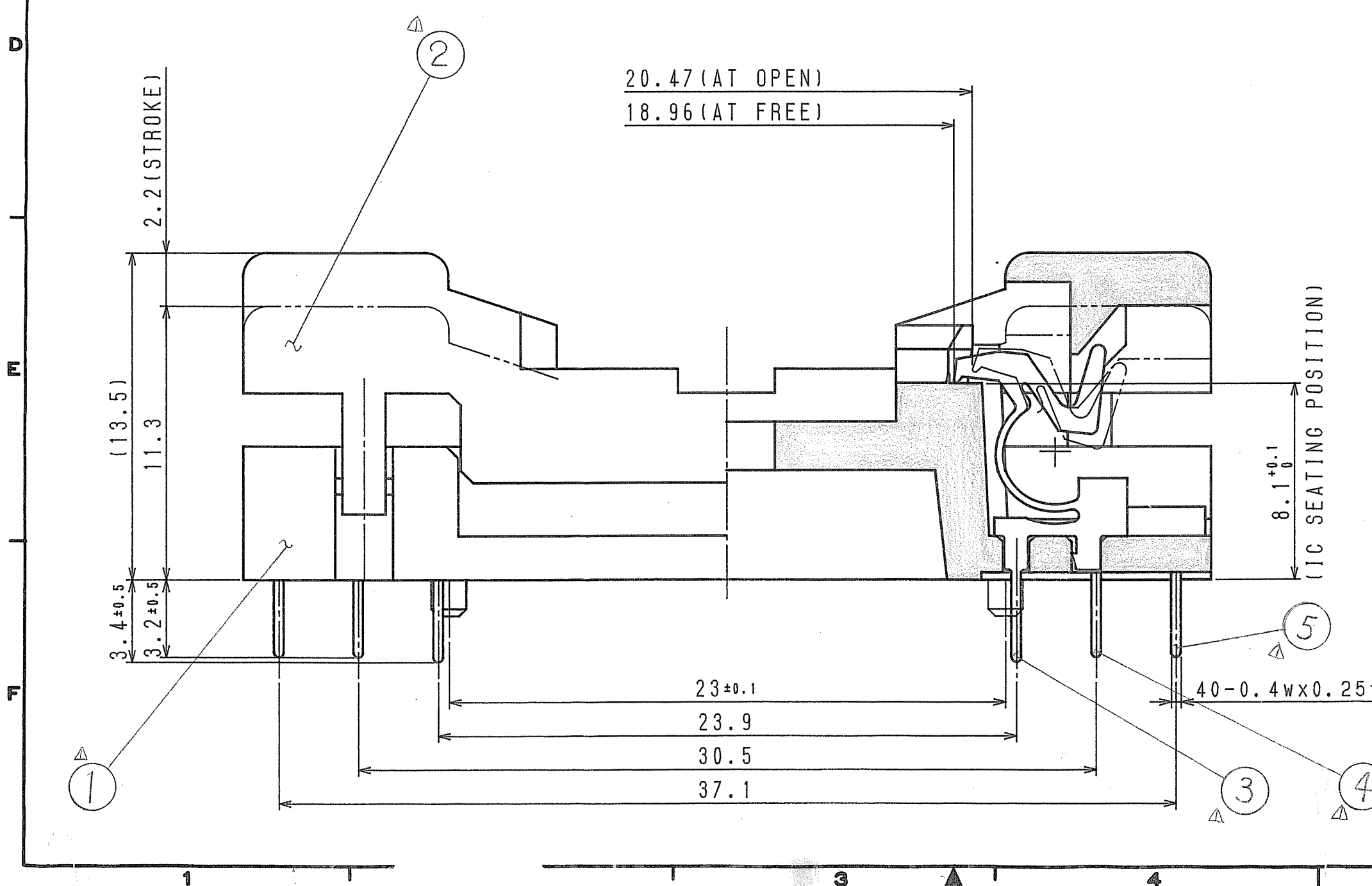
|               |
|---------------|
| 551924-167-01 |
|---------------|



プリント基板取り付け穴位置 (S=2:1)  
P.C.B. PATTERN (TOP VIEW)



適合デバイス寸法値 (S=2:1)  
MATCHING DEVICE



| SPECIFICATION                           |                                  |
|---|----------------------------------|
| 仕様                                      |                                  |
| CONTACT RESISTANCE<br>接触抵抗              | 50 mΩ or less at 10 mA (INITIAL) |
| DIELLECTRIC WITHSTANDING VOLTAGE<br>耐電圧 | 500V. A.C for 1 minute           |
| INSULATION RESISTANCE<br>絶縁抵抗           | 1000MΩ or more at 500V.D.C       |
| RATED CURRENT<br>定格電流                   | 1A                               |
| OPERATING TEMPERATURE<br>使用温度           | -65℃ ~ 150℃                      |
| RETENTION FORCE<br>留子抜け強度               | 0.5kg for 1 minute               |
| INSERTION<br>寿命                         | 10000 cycle (MECHANICAL)         |
| ACTUATION FORCE<br>カバー作動力               | MAX. 2.0kg                       |

| 符号<br>SYM. | 顧客品番<br>CUSTOMER'S PART NO. | 図番<br>DWG. NO. | 品名<br>NAME            | 材質<br>MAT'L | 個数<br>Q'TY | 備考<br>REMARKS |
|------------|-----------------------------|----------------|-----------------------|-------------|------------|---------------|
| 5          | OTS-32-0.5-02-006           | 55-110-759-01  | CONTACT FP用コンタクト "KC" | BeCu        | 13         |               |
| 4          | OTS-32-0.5-02-005           | 55-110-758-01  | CONTACT FP用コンタクト "KB" | BeCu        | 14         |               |
| 3          | OTS-32-0.5-02-004           | 55-110-757-01  | CONTACT FP用コンタクト "KA" | BeCu        | 13         |               |
| 2          | OTS-40-0.5-01-002           | 57-299-012-01  | カバー COVER             | PEI         | 1          |               |
| 1          | OTS-40-0.5-01-001           | 57-299-011-01  | 本体 BODY               | PEI         | 1          |               |

|                                 |                                       |                                 |          |
|---------------------------------|---------------------------------------|---------------------------------|----------|
| 機種 USED FOR                     | 顧客品番 CUSTOMER'S PART NO.              | 一般公差 GENERAL TOLERANCES         | ±0.3     |
| 承認者 APPROVED BY<br>T. KASHINAGA | 品名 NAME<br>OTS-40-0.5-01<br>IC SOCKET | 度尺 SCALE<br>5 : 1               | REV. NO. |
| 検図者 CHECKED BY<br>M. FURUNAGA   | 製図者 DRAWN BY<br>T. SEKIGUCHI          | 図番 DRAWING NO.<br>55-024-103-01 | 1/1      |
| 訂正箇所 REVISIONS                  | 署名 SIGN<br>T.S.                       | 作成年月日 ISSUED ON<br>'93.01.25    |          |

マイクロフィルム用紙  
SCALE FOR MICRO FILM

|   |  |
|---|--|
| L |  |
| K |  |
| J |  |
| I |  |
| H |  |
| G |  |
| F |  |
| E |  |
| D |  |
| C |  |
| B |  |
| A |  |