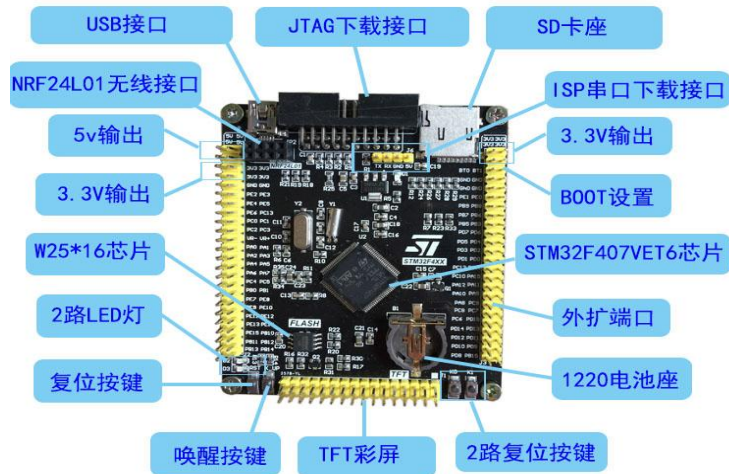


硬件资源描述

PRODUCT PRESENTATION



© Copyright Reserved

武汉雁凌电子科技有限公司

板上資源：

1 1路電源指示燈 2路LED指示燈（接的普通IO口）

2 外擴TF-SD卡，方便SD卡實驗

3 1路重定按鍵 2路獨立按鍵 1路喚醒按鍵

4 STM32F407VE 晶片用的IO引腳全部引出

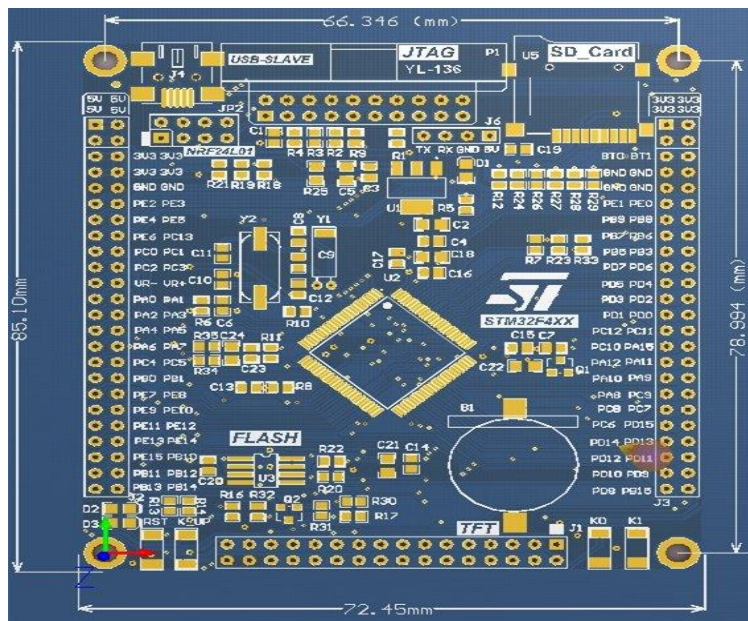
5 2路下載介面 ISP 串口下載介面+ JTAG 模擬介面

6 外擴1路NF24C01 無線模組介面

7 外擴W25*16 flash 晶片，方便做SPI實驗

8 外擴標準的FSMC 液晶介面

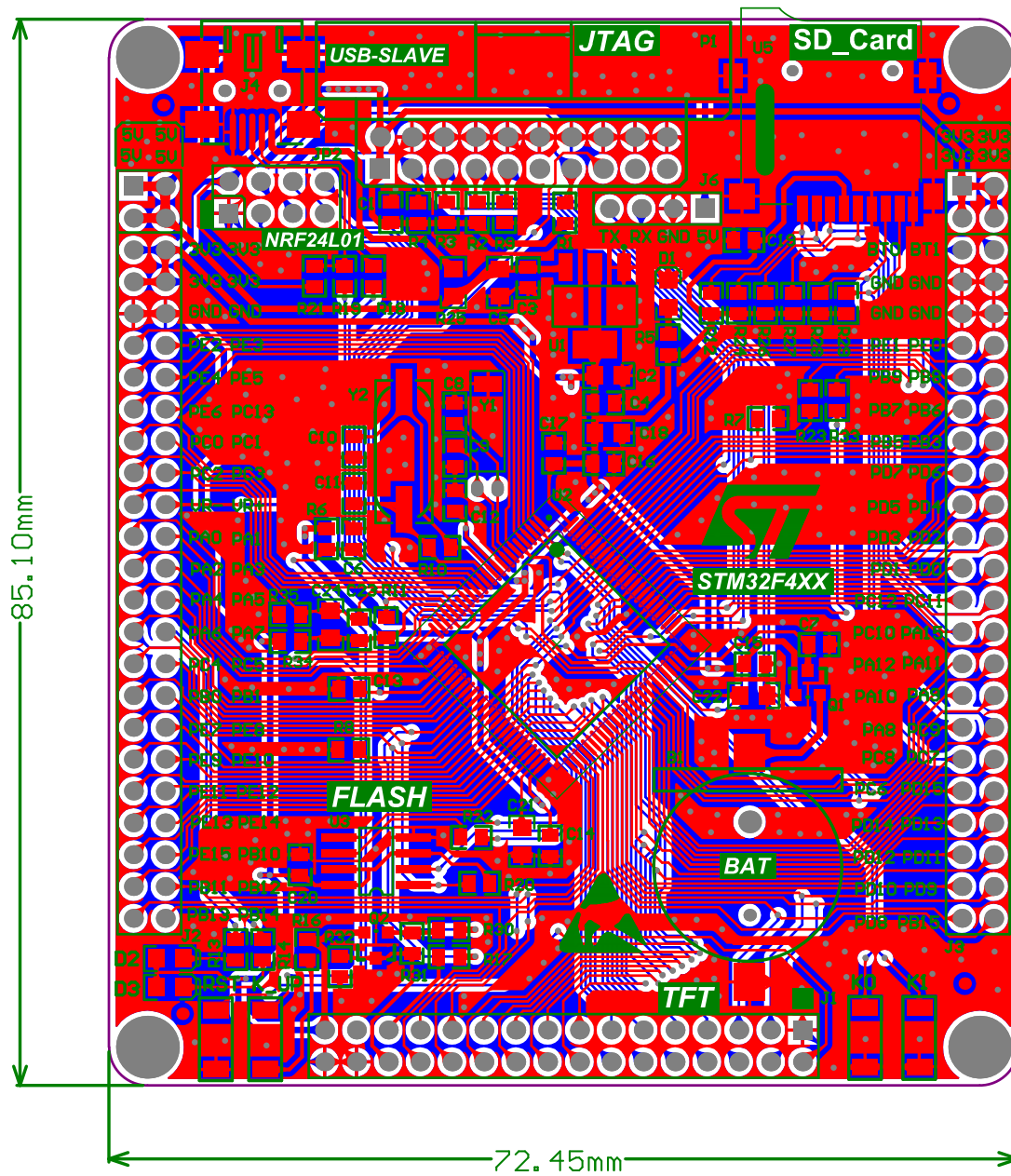
9 PCB尺寸：8.5cm*7.2cm



附件附上資料鏈接，請查收！

<https://pan.baidu.com/s/1MGW-OrPv074QwZA5Mjn1fQ>

提取碼：8s9u



Comment	Description	Designator	Footprint	LibRef	Quantity
BAT		B1	BAT	BATTERY	1
104	Capacitor, Capacitor, Capacitor, Capacitor, Capacitor, Capacitor, Capacitor, Capacitor, Capacitor, Capacitor (Semiconductor SIM Model), [NoValue], Capacitor	C1, C3, C4, C6, C7, C12, C13, C14, C15, C16, C17, C19, C20, C23	RC0603	Cap, CAP, CAP, CAP, Cap, Cap, Cap, Cap, Cap, Cap, Cap, Cap Semi, CAP, Cap	14
106	[NoValue], [NoValue], Capacitor, Capacitor, Capacitor, Capacitor	C2, C5, C18, C21, C22, C24	RC0805	ELECTRO2, ELECTRO2, Cap, Cap, Cap, Cap	6
15P		C8, C9	RC0603	CAP	2
20P	Capacitor	C10, C11	RC0603	CAP	2
LED		D1, D2, D3	LED0805	LED	3
Header 16X2	Header, 16-Pin, Dual row	J1	IDE2X16	Header 16X2	1
Header 24X2	Header, 24-Pin, Dual row	J2, J3	IDE2X24	Header 24X2	2
usb		J4	Mini_USB	usb	1
ISP_COM	Header, 4-Pin	J6	HDR1X4	Header 4	1
NRF2401	Header, 4-Pin, Dual row	JP2	IDE2X4	Header 4X2	1
SW-PB		K0, K1, K_UP, RST	SW-SPST	SW-PB	4
ARM_JTAG	JTAG	P1	JTAG-20P	JTAG	1
BAT54C		Q1	SOT-23-BAT54C	BAT54C	1
PNP	PNP Bipolar Transistor	Q2	PNP_SOT23	PNP	1
10K	[NoValue], [NoValue], [NoValue], [NoValue], Resistor, Resistor, Resistor, Resistor, Resistor, Resistor, [NoValue], Resistor, Resistor, Resistor, Resistor	R1, R2, R3, R4, R6, R7, R8, R9, R12, R16, R20, R24, R26, R27, R28, R29	RC0603	RES, RES, RES, RES, Res2, Res2, Res2, Res2, Res2, Res2, RES, Res2, Res2, Res2, Res2, Res2	16
510R	Resistor	R5, R13, R14	RC0603	Res2	3
1M	Resistor	R10	RC0603	Res2	1
0R	Resistor	R11, R34, R35	RC0603	Res2	3
1.5K		R17, R21, R30, R32	RC0603	RES	4
22		R18, R19	RC0603	RES	2
22R		R22	RC0603	RES	1
1K	Resistor	R23, R33	RC0603	Res2	2
500mA		R25	RC0805	RES	1
NC		R31	RC0603	RES	1
AMS1117-3.3V		U1	SOT-223	11	1
STM32F407VET6		U2	LQFP100	STM32F407VET6	1
W25Q16		U3	SOP8L	W25X16	1
MiniSD		U5	TF_SD	MiniSD	1
32.768K	晶振	Y1	JZ32768	CRYSTAL	1
8M	Crystal	Y2	49S_SMD	CRYSTAL	1