

MICRO SWITCH (TWO-CIRCUIT DOUBLE-BREAK)

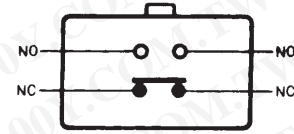
勝特力材料 886-3-5753170
 勝特力电子(上海) 86-21-34970699
 勝特力电子(深圳) 86-755-83298787
[Http://www.100y.com.tw](http://www.100y.com.tw)

TW

RATINGS

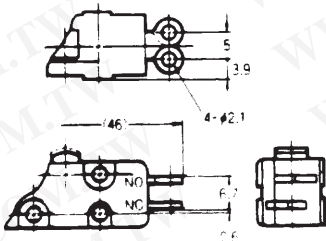
Rated voltage (V)	Noninductive load (A)				Inductive load (A)				Inrush Current (A)	
	Resistive load		Lamp load		Inductive load		Motor load			
	NC	NO	NC	NO	NC	NO	NC	NO	NC	NO
125 VAC	10		3	1.5			4	2	30 Max.	15 Max.
250 VAC	10		2	1	10		3	1.5		
8 VDC	10		6	3	10		6			
14 VDC	10		6	3	10		6			
30 VDC	6		4	3	6.0		4			
125 VDC	0.8		0.2	0.2	0.8		0.2			
250 VDC	0.4		0.1	0.1	0.4		0.1			

CONTACT CONFIGURATION

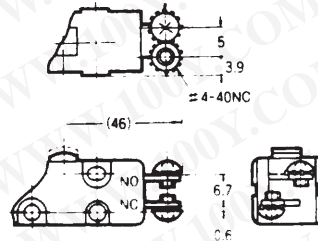


TERMINAL TYPE

TW-101A
Solder Type



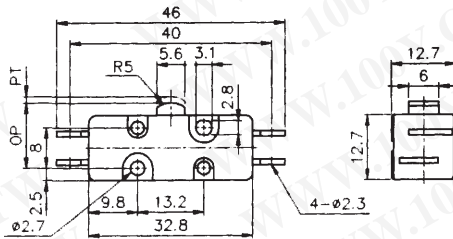
TW-101B
Screw Type



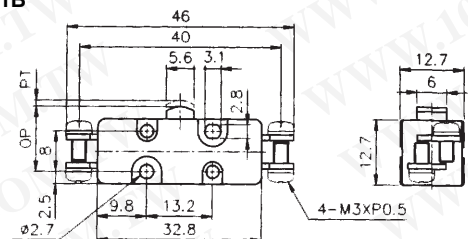
OPERATING CHARACTERISTICS

TYPE	TW-101	TW-1012	TW-1014
OF max.	400g	200g	240g
RF min	114g	60g	70g
PT max.	1.6mm	3.5mm	3mm
OT min	0.25mm	1.8mm	1.2mm
MD max	0.65mm	1.6mm	2mm
OP	11.7±0.4mm	14.6±0.8mm	25.3±0.8mm

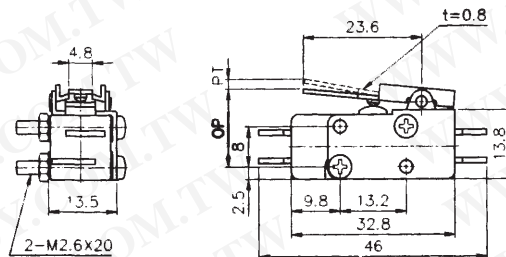
TW-101A



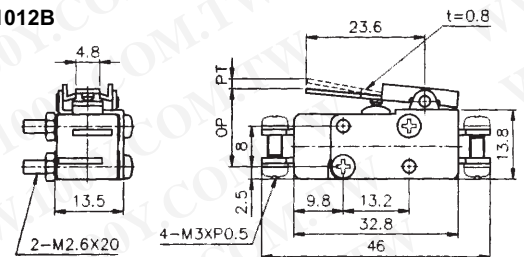
TW-101B



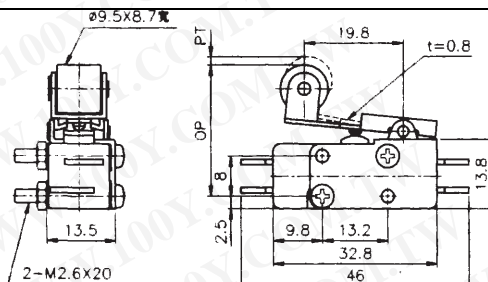
TW-1012A



TW-1012B



TW-1014A



TW-1014B

