

High power hot air station

JT 7750

230V P/N.: 7750200

The JT 7750 is used for desoldering all types of SMDs.

Its powerful heater enables quick and safe desoldering of even the biggest QFPs and PLCCs. In addition, it desolders small and medium sized BGA's in a very reduced time span.

Digital read-out temperature allows more precision and tool control.

The system, exclusive to JBC, uses extractors/protectors and hot air, to desolder in a quick, safe and clean way while protecting the surrounding components by concentrating the heat onto the IC.

A medium-sized QFP, for example, can be desoldered in 20 seconds.

The new button on the handle allows users to concentrate on the job without having to make unnecessary and time consuming movements to turn the hot air on.

Specifications

- Air pump for hot-air with electronic control of temperature and air flow.
- Vacuum pump for holding ICs.
- Power: 1000 W.
- Temperature selection: °C or °F, Room - 450 °C and cool
- Air flow regulation: 6-45 l/min.
- Antistatic control box "skin effect".
- Weight of complete system: 8,7 kg.

JT 7750 Includes

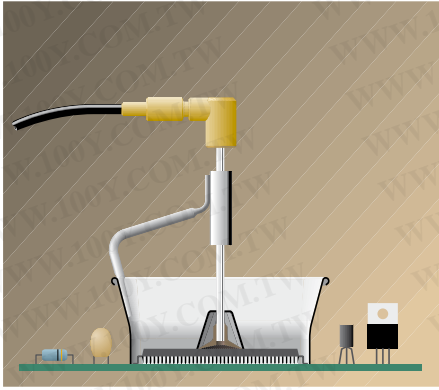
- Control unit P/N.: 7750300 (230V) with 1000 W heater.
- Extractor stand with 5 extractors, 5 protectors and two tripods.
- Heater stand and set of accessories.



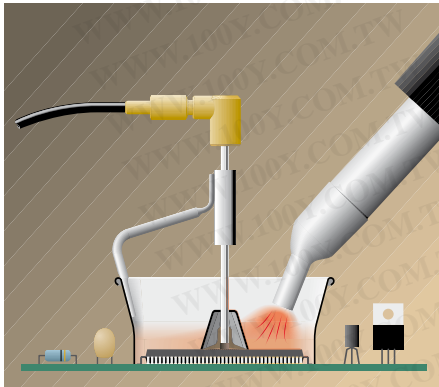
For more information:

www.jbctools.com

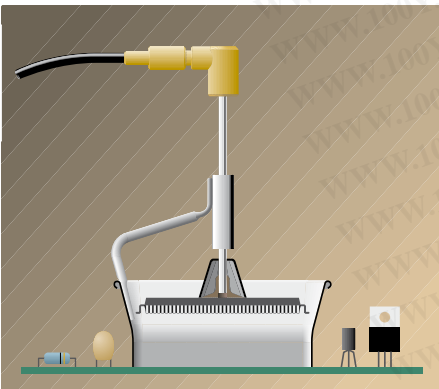
Process to desolder an IC with a JT 7750 station



1. Lock the extractor.



2. Hot-air melts the solder.



3. IC is removed automatically.

The time needed to desolder a medium-sized IC is only 20 seconds.

Protectors



P/N.:	Amm	Bmm	
0003353	4,3	3	
0003786	5,2	5,2	
0003352	5,2	7,5	
0003355	5,2	9,5	
0003356	6,2	4,2	
0003785	7,2	7,2	
0003784	8,2	8,2	
0934035	9	13	
0934040	9,5	19	
0934080	9,5	21	
¹⁻² 32	0932220	10	10
0934045	10,5	21	
0934090	11	16	
¹⁻² 24	0932235	12	17
0001249	12	23	
¹⁻² 44	0934000	12,5	12,5
0001593	13	31,5	
0003354	13,2	13,2	
0934025	13,5	21,5	
¹⁻² 48	0932230	15	15
¹⁻² 60	0934010	17	17
0934005	18	29	
0934030	18,5	18,5	
0001068	18,5	24	
0932685	28,5	28,5	
0934085	31,5	31,5	
0002672	33	46	
0934002	50	50	
0003357	52,5	14	

Manual extractors



P/N.:
0932190 Manual extractor

Extractors



P/N.:	Amm	Bmm	
¹⁻² 57	0932052	20	20
¹⁻² 64	0932064	20	26
¹⁻² 80	0932184	24	24
¹ 68	0932068	27	27
	0934020	28,5	28,5
	0934015	31,5	31,5
¹ 84	0932084	33	33
100	0932100	38	38
124	0932124	45	45

A and B are inner working areas.

Tripods



P/N.:	ø C mm	
¹⁻² 20	0932050	39
¹⁻² 40	0932250	85

¹ Supplied with the station JT 7750
² Supplied with the station TE 5400