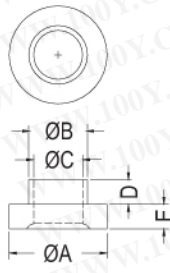
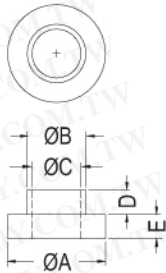
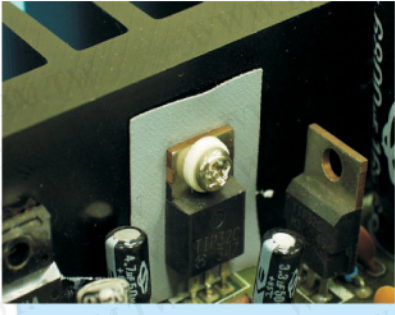


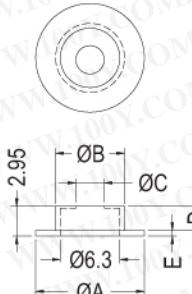
電晶體墊片 TRANSISTOR WASHERS

- ◆ MATERIAL: PBT, N46, PPS, N66 V-2
- ◆ COLOR: NATURAL/BLACK
- ◆ UNIT: mm

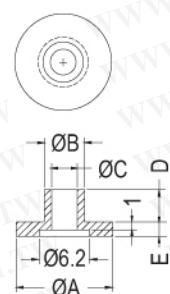
● 用途: 鎖於電晶體上, 避免晶體外殼與散熱片間造成短路。



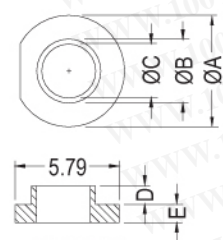
ONLY FOR TW-6A



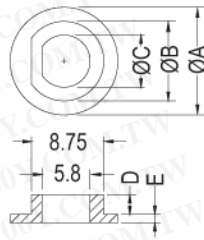
ONLY FOR TW-105



ONLY FOR TW-66



ONLY FOR TW-19



ONLY FOR TW-68

PART NO	A	B	C	D	E	PACKAGE
TW-1	6.0	3.6	3.0	1.5	1.5	2000
TW-2	6.2	3.5	3.0	3.0	1.5	
TW-3	6.2	3.5	3.0	2.5	2.0	
TW-4	6.0	3.5	3.0	2.0	2.0	
TW-5	6.2	3.5	2.9	1.2	1.0	
TW-6	6.2	3.5	2.9	1.4	1.2	
TW-6A	6.2	3.55	3.0	1.4	1.2	
TW-7	8.0	3.8	3.1	2.8	1.2	
TW-8	8.0	3.8	3.1	1.2	1.2	
TW-9	10.0	6.0	5.0	5.0	1.0	
TW-10	10.0	5.0	4.0	4.0	1.0	
TW-11	9.5	6.3	4.5	1.2	1.2	1000
TW-12	9.5	6.3	4.1	0.8	1.7	
TW-14	9.9	8.3	6.5	1.5	1.0	
TW-15	6.2	3.6	3.0	2.4	1.9	

PART NO	A	B	C	D	E	PACKAGE
TW-16	6.1	3.5	2.9	1.6	1.4	2000
TW-17	6.1	3.55	3.0	1.5	2.0	
TW-18	6.35	5.15	3.5	1.6	0.6	
TW-19	6.22	3.56	3.02	1.02	1.02	
TW-20	6.5	3.5	2.95	4.0	0.9	
TW-21	7.0	5.0	3.0	5.8	2.0	
TW-22	11.9	7.9	4.0	3.0	2.6	
TW-23	7.1	5.0	3.0	2.3	2.0	
TW-24	6.4	3.55	2.95	2.0	1.3	
TW-25	7.92	4.83	3.05	0.8	1.14	
TW-26	6.0	3.7	3.0	5.2	1.0	
TW-27	6.0	3.55	2.95	1.4	1.4	
TW-29	14.0	7.5	6.0	1.8	1.2	
TW-30	14.0	9.8	6.6	1.7	0.9	
TW-31	16.0	11.4	10.0	0.8	0.7	
TW-33	6.0	3.5	2.5	7.2	5.0	
TW-34	6.0	3.5	2.5	11.0	5.0	
TW-35	6.0	3.55	2.95	1.2	1.3	
TW-36	15.7	9.7	4.5	6.5	5.0	
TW-37	6.0	3.55	2.95	3.2	2.0	
TW-38	6.1	3.5	2.95	1.5	1.1	
TW-39	5.46	3.43	2.95	0.81	1.02	
TW-41	6.6	4.95	2.6	6.0	1.5	
TW-42	6.35	4.78	3.94	1.57	3.18	
TW-43	25.4	11.0	8.3	2.29	1.58	
TW-48	11.0	8.0	5.5	8.0	1.3	
TW-49	6.4	3.53	3.0	2.0	1.2	
TW-53	11.8	6.0	4.0	1.9	0.5	
TW-57	10.0	4.3	3.45	3.0	1.0	
TW-58	6.2	3.5	3.0	2.5	2.7	
TW-59	6.2	3.5	3.0	2.5	2.0	
TW-60	6.4	3.5	3.0	2.0	1.3	
TW-61	6.0	3.5	3.0	3.2	2.0	
TW-62	6.1	3.5	3.0	1.5	1.1	
TW-63	10.0	5.0	3.95	4.0	0.5	
TW-64	4.0	2.7	2.1	0.8	0.8	
TW-65	6.0	3.55	3.0	4.6	2.0	
TW-66	12.0	5.0	3.2	4.0	1.8	
TW-68	13.0	9.6	6.3	2.4	1.0	
TW-70	6.2	3.6	2.95	2.9	1.9	
TW-73	9.0	6.0	4.5	8.0	2.0	
TW-75	7.0	4.4	3.2	7.5	0.5	
TW-77	5.0	4.1	2.2	1.2	1.2	
TW-78	21.0	17.4	16.2	2.8	0.8	
TW-79	6.0	3.6	2.95	2.4	1.2	
TW-80	6.0	3.6	2.95	4.8	1.2	
TW-84	6.2	3.6	2.95	12.0	1.9	
TW-85	6.1	3.5	2.9	1.85	1.4	
TW-88	6.0	3.5	3.0	2.3	1.8	
TW-90	6.3	3.5	3.0	2.6	1.2	
TW-97	9.0	3.5	3.0	3.5	1.0	
TW-99	6.0	3.8	3.1	6.5	1.2	
TW-100	6.1	3.5	3.0	2.1	1.4	
TW-101	6.1	3.5	3.0	3.0	1.4	
TW-102	12.7	6.7	4.3	1.5	1.46	
TW-104	15.0	7.9	6.2	4.0	1.5	
TW-105	11.5	7.3	3.1	2.6	0.6	
TW-106	9.5	6.5	5.1	9.0	1.5	
TW-107	6.2	3.5	3.0	2.9	1.9	
TW-108	6.4	3.5	3.0	2.0	1.2	
★ TW-110	9.5	6.0	3.7	1.5	1.0	
★ TW-111	6.0	3.4	2.7	2.5	1.0	
★ TW-113	6.0	3.55	3.0	1.6	1.3	
★ TW-123	8.2	4.65	4.05	3.6	0.5	
★ TW-127	6.2	3.5	3.0	4.1	2.0	
★ TW-135	13.0	7.9	6.6	2.4	1.7	
★ TW-136	6.2	3.55	3.0	0.6	1.2	