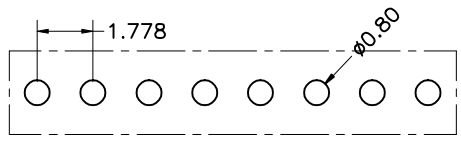
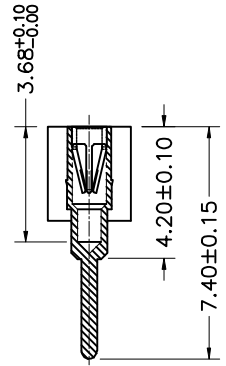
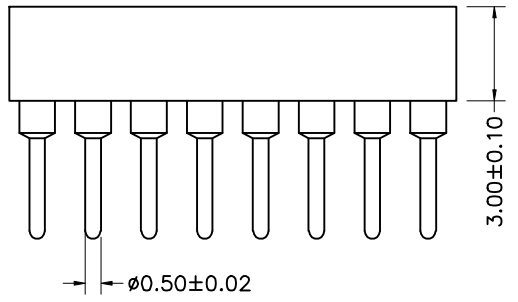
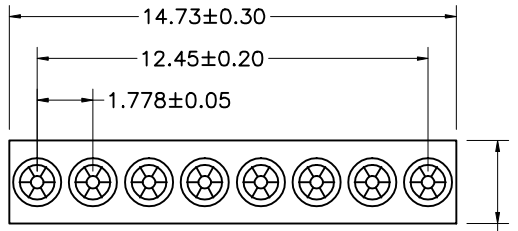


勝特力電材超市-龍山店 886-3-5773766
 勝特力電材超市-光復店 886-3-5729570
 勝特力电子(上海) 86-21-34970699
 勝特力电子(深圳) 86-755-83298787
<http://www.100y.com.tw>

REVISION DATA		
REV	DESCRIPTION	DATE
AO	NEW DRAWING	25-8-20



P. C. B LAYOUT

技术数据

材质:
 Pin(外壳): 铜C3604 CuZn38Pb2
 内爪(六爪): 镀铜,C17200
 电镀(外壳):
 镀锡 2 μm/80 μ"NI,5 μm/200 μ"Sn
 镀金 2 μm/80 μ"NI,0.8 μ" gold
 电镀(内爪): 2 μm/80 μ"NI,0.8 μ" gold
 防火等级: PPS UL94V-0
 匹配公针: Ø0.40mm/0.56mm

电气

允许电流: 3Amps
 接触电阻: ≤20mΩ/包含
 绝缘电阻: ≥1000MΩ at V=100V
 直流耐压: 1000V AV Min
 工作电压: 60VAC/DC

物理性能

插入力 Ø0.50: <90g
 拔出力 Ø0.50: >25g
 循环次数: 最少 500次
 工作温度: -40°C to +105°C
 焊接温度: +255°C

X	X	X	XX	XX	XX	XXX	X
Pitch(mm) A=1.27 B=1.778 C=2.00 D=2.54	Insulator Type code 1=Single row 2=Double row 3=Three row	Angel Options D=180° R=90° S=SMT I=IC	No. of Positions 15 positions	Pin plated T1=Tin 150u" T2=Tin 200u" G1=G/F G2=Gold 3u" G3=Gold 10u" G4=Gold 15u" G5=Gold 30u"	CLIP plated T1=Tin 150u" T2=Tin 200u" G1=G/F G2=Gold 3u" G3=Gold 10u" G4=Gold 15u" G5=Gold 30u"	Pin Length Options 6740-7.40mm	Specifications A=Public seat B=Female seat

TOLERAVCE	PROJECTON	TITLE:
X. XXX ±0.05	DATE: 2025-8-20	Single row socket connector 1.778mm L=7.40mm
X. XX ±0.15	DRAWN: Ribelle	PART NO: B1-D08XXXX0740B
X. X ±0.20	CHECKED:	DRAWING NO: 2025082001
X. ±0.30	APPROVED:	REV: AO UNIT: mm SCALE: FULL SIZE: A4
ANGLE ±5.0°		