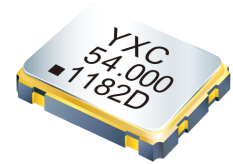


CRYSTAL OSCILLATOR

YSO110TR *Wide Voltage*



Applications

- Consumer Electronics
- Industrial Control
- IOT

Features

- Frequency range:1MHz-54MHz
- Ultra Small SMD seam sealed crystal oscillator units.
- Package Size: 1.6*1.2 , 2.0*1.6
2.5*2.0 , 3.2*2.5 , 5.0*3.2 , 7.0*5.0mm

Specifications

Frequency Range	1MHz to 54MHz,or specify
Parameter	1.8V~3.3V
Output Type	CMOS
Frequency Tolerance(at 25°C)	±10ppm,±20ppm,or specify
Output Load	15pF
Operating Temperature Range	-40~+85°C,-40~+125°C,or specify
Storage Temperature Range	-55~+125°C
Frequency Versus Temperature Characteristics	± 20ppm, ± 30ppm, ± 50ppm, or specify
Voltage Vol (Max.) / Vol (Min.)	VOH = 90%Vdd/VOL = 10%Vdd
Duty Cycle	45~55%
Start-up Time	3ms Max.
Rise Time/Fall Time	4nS Max
Supply Current	See Below
Frequency Aging (at 25°C)	±3 ppm / year Max.

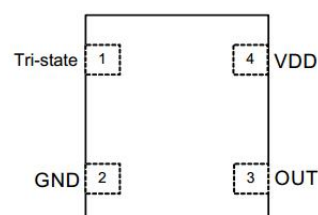
Current Consumption

Power Dissipation Vcc=1.8~3.3V 15pF only				
Supply Voltage (V)	1.000~40.000MHZ		41.000~54.000MHZ	
	7050/5032/3225	2520/2016/1612	7050/5032/3225/2520	2016/1612
1.8V	4mA max	4mA max	9mA max	10mA max
2.5V	4.5mA max		10mA max	
3.3V	5mA max		12mA max	

Pin Dimension

Pin	#1	#2	#3	#4
FUNCTION	Tri-state	GND	OUTPUT	VDD

Pin Assignments

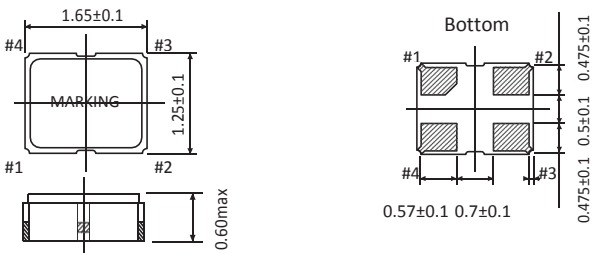
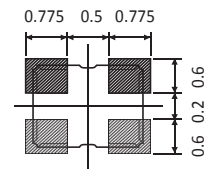
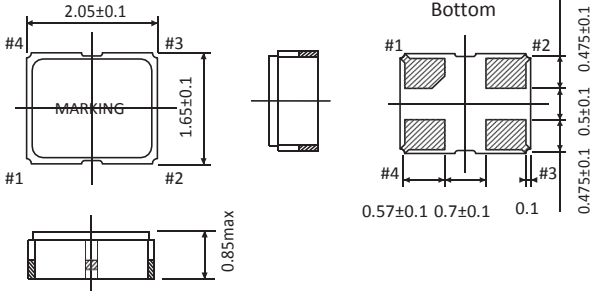
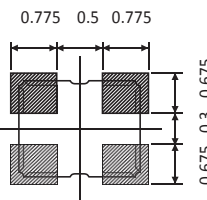
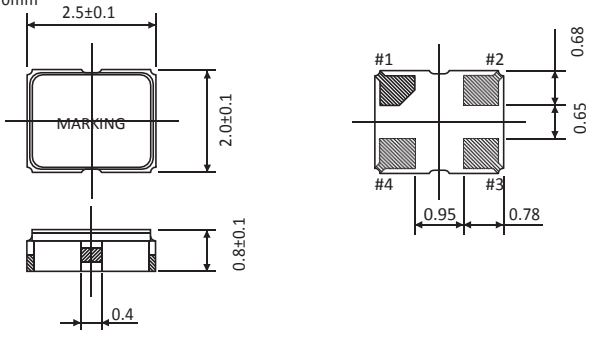
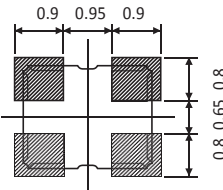
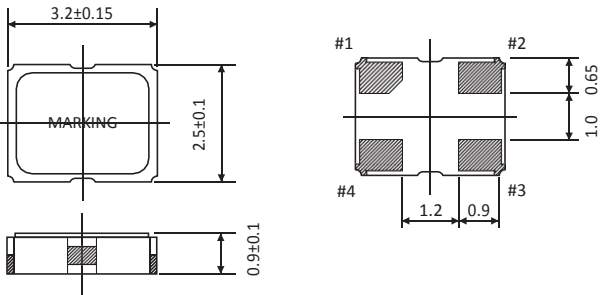
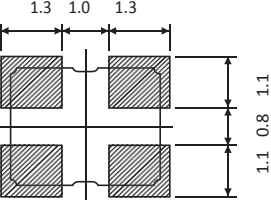


CRYSTAL OSCILLATOR

YSO110TR *Wide Voltage*

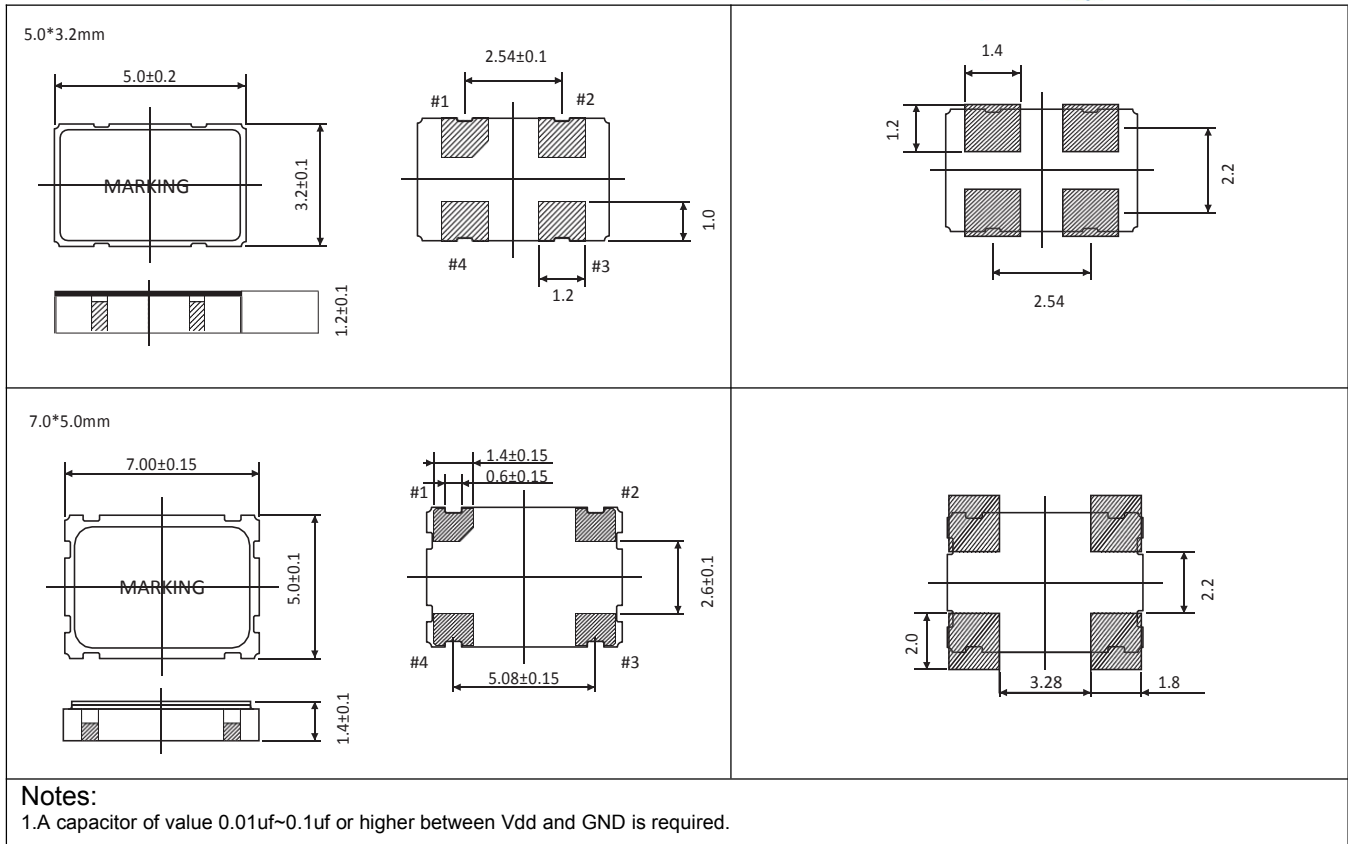


Dimensions and Patterns [unit:mm]

Package Size – Dimensions (Unit: mm)	Recommended Land Pattern (Unit: mm)
<p>1.6*1.2mm</p>  <p>Top view: 1.65±0.1, 1.25±0.1, MARKING, #1, #2, #3, #4</p> <p>Bottom view: #1, #2, #3, #4, 0.57±0.1, 0.7±0.1, 0.475±0.1, 0.5±0.1, 0.475±0.1</p> <p>Side view: 0.60max</p> <p>Land pattern: 0.775, 0.5, 0.775, 0.6, 0.2, 0.6</p>	 <p>0.775, 0.5, 0.775, 0.6, 0.2, 0.6</p>
<p>2.0*1.6mm</p>  <p>Top view: 2.05±0.1, 1.65±0.1, MARKING, #1, #2, #3, #4</p> <p>Bottom view: #1, #2, #3, #4, 0.57±0.1, 0.7±0.1, 0.1, 0.475±0.1, 0.5±0.1, 0.475±0.1</p> <p>Side view: 0.85max</p> <p>Land pattern: 0.775, 0.5, 0.775, 0.675, 0.3, 0.675</p>	 <p>0.775, 0.5, 0.775, 0.675, 0.3, 0.675</p>
<p>2.5*2.0mm</p>  <p>Top view: 2.5±0.1, 2.0±0.1, MARKING, #1, #2, #3, #4</p> <p>Bottom view: #1, #2, #3, #4, 0.95, 0.78, 0.68, 0.65</p> <p>Side view: 0.8±0.1, 0.4</p> <p>Land pattern: 0.9, 0.95, 0.9, 0.8, 0.65, 0.8</p>	 <p>0.9, 0.95, 0.9, 0.8, 0.65, 0.8</p>
<p>3.2*2.5mm</p>  <p>Top view: 3.2±0.15, 2.5±0.1, MARKING, #1, #2, #3, #4</p> <p>Bottom view: #1, #2, #3, #4, 1.2, 0.9, 1.0, 0.65</p> <p>Side view: 0.9±0.1</p> <p>Land pattern: 1.3, 1.0, 1.3, 1.1, 0.8, 1.1</p>	 <p>1.3, 1.0, 1.3, 1.1, 0.8, 1.1</p>

CRYSTAL OSCILLATOR

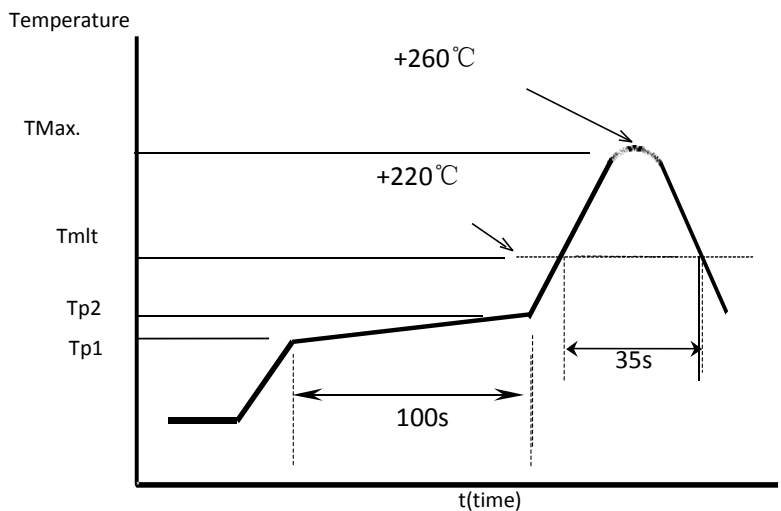
YSO110TR *Wide Voltage*



Reflow Soldering Profile

Pre Heating Temperature
 Tp1 ~ Tp2 = + 170 °C
 Heating Temperature
 TMI = + 220 °C
 Peek Temperature
 TMax. = + 260 °C

Point of measuring
 In case of Solder ability Terminal.
 In case of Resistance to soldering heat Surface.

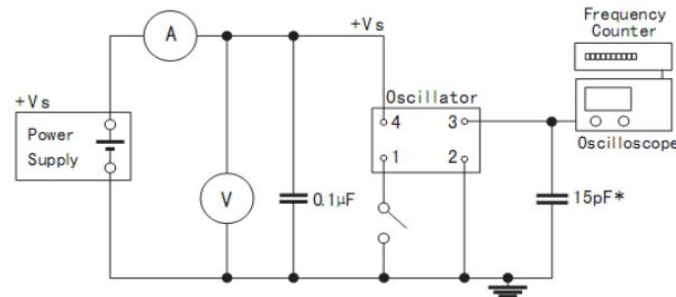


CRYSTAL OSCILLATOR

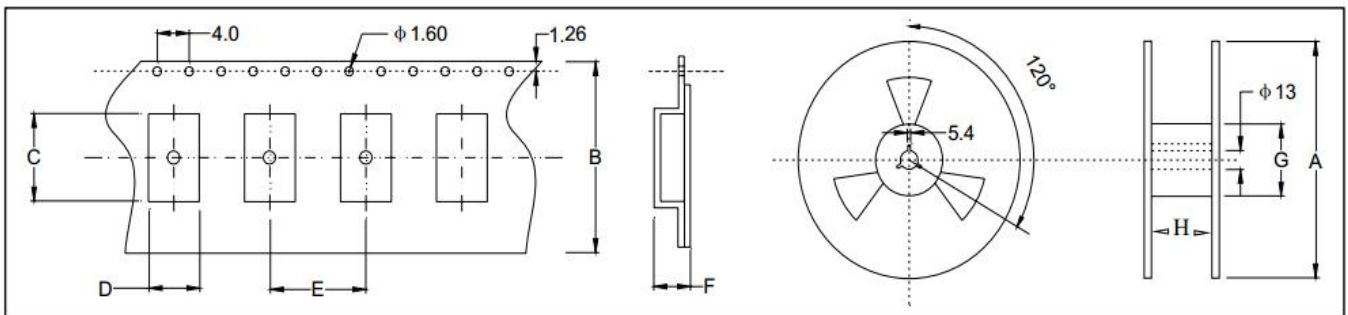
YSO110TR *Wide Voltage*



Test Circuit



Taping Specification(Unit: mm)



Size(OSC)	A	B	C	D	E	F	G	H
SMD-7050	180±2.0	16.0±0.3	7.50±0.1	5.50±0.1	8.0±0.1	2.00±0.1	61.0±1.0	16.0±1.0
SMD-5032	180±2.0	12.0±0.3	5.40±0.1	3.60±0.1	8.0±0.1	1.70±0.1	61.0±1.0	12.0±1.0
SMD-3225	180±2.0	8.0±0.3	3.40±0.1	2.70±0.1	4.0±0.1	1.50±0.1	61.0±1.0	8.0±1.0
SMD-2520	180±2.0	8.0±0.3	2.90±0.1	2.40±0.1	4.0±0.1	1.20±0.1	61.0±1.0	8.0±1.0
SMD-2016	180±2.0	8.0±0.3	2.30±0.1	1.90±0.1	4.0±0.1	0.95±0.1	61.0±1.0	8.0±1.0
SMD-1612	180±2.0	8.0±0.3	1.80±0.1	1.40±0.1	4.0±0.1	0.80±0.1	61.0±1.0	8.0±1.0

勝特力電材超市-龍山店 886-3-5773766
 勝特力電材超市-光復店 886-3-5729570
 勝特力電子(上海) 86-21-34970699
 勝特力電子(深圳) 86-755-83298787
<http://www.100y.com.tw>