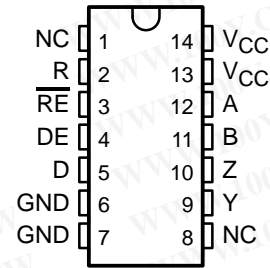


SN75ALS181 DIFFERENTIAL DRIVER AND RECEIVER PAIR

SLLS152B – DECEMBER 1992 – REVISED APRIL 2003

- Meets TIA/EIA-422-B, TIA/EIA-485-A, and CCITT Recommendations V.11 and X.27
- Low Supply-Current Requirements . . . 30 mA Max
- Driver Output Capacity . . . ± 60 mA
- Thermal Shutdown Protection
- Driver Common-Mode Output Voltage Range of -7 V to 12 V
- Receiver Input Impedance . . . 12 k Ω Min
- Receiver Input Sensitivity . . . ± 200 mV
- Receiver Input Hysteresis . . . 60 mV Typ
- Receiver Common-Mode Input Voltage Range of ± 12 V
- Operates From Single 5-V Supply
- Glitch-Free Power-Up and Power-Down Protection

N OR NS PACKAGE
(TOP VIEW)



NC – No internal connection

勝特力材料 886-3-5753170
 勝特力电子(上海) 86-21-54151736
 勝特力电子(深圳) 86-755-83298787
 Http://www.100y.com.tw

description/ordering information

The SN75ALS181 is a differential driver and receiver pair designed for bidirectional data communication on multipoint bus transmission lines. The design provides for balanced transmission lines and meets TIA/EIA-422-B and TIA/EIA-485-A, and CCITT recommendations V.10, V.11, X.26, and X.27.

The SN75ALS181 combines a 3-state differential line driver and a differential-input line receiver that operate from a single 5-V power supply. The driver and receiver have active-high and active-low enables, respectively, that can be connected together externally to function as a direction control. The driver differential outputs and the receiver differential inputs are connected to separate pins for greater flexibility and are designed to offer minimum loading to the bus when the driver is disabled or $V_{CC} = 0$. These ports feature wide positive and negative common-mode voltage changes, making the device suitable for party-line applications.

ORDERING INFORMATION

T _A	PACKAGE†		ORDERABLE PART NUMBER	TOP-SIDE MARKING
	PDIP (N)	Tube of 25		
0°C to 70°C	SOP (NS)	Reel of 2000	SN75ALS181N	SN75ALS181N
			SN75ALS181NSR	75ALS181

† Package drawings, standard packing quantities, thermal data, symbolization, and PCB design guidelines are available at www.ti.com/sc/package.



Please be aware that an important notice concerning availability, standard warranty, and use in critical applications of Texas Instruments semiconductor products and disclaimers thereto appears at the end of this data sheet.

PRODUCTION DATA information is current as of publication date. Products conform to specifications per the terms of Texas Instruments standard warranty. Production processing does not necessarily include testing of all parameters.


**TEXAS
INSTRUMENTS**

POST OFFICE BOX 655303 • DALLAS, TEXAS 75265

Copyright © 2003, Texas Instruments Incorporated

SN75ALS181 DIFFERENTIAL DRIVER AND RECEIVER PAIR

SLLS152B – DECEMBER 1992 – REVISED APRIL 2003

Function Tables

EACH DRIVER

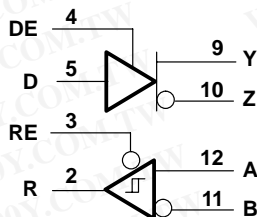
INPUT D	ENABLE DE	OUTPUTS	
		Y	Z
H	H	H	L
L	H	L	H
X	L	Z	Z

EACH RECEIVER

DIFFERENTIAL A-B	ENABLE RE	OUTPUT Y
$V_{ID} \geq 0.2 \text{ V}$	L	H
$-0.2 \text{ V} < V_{ID} < 0.2 \text{ V}$	L	?
$V_{ID} \leq -0.2 \text{ V}$	L	L
X	H	Z

H = high level, L = low level, ? = indeterminate,
X = irrelevant, Z = high impedance (off)

logic diagram (positive logic)

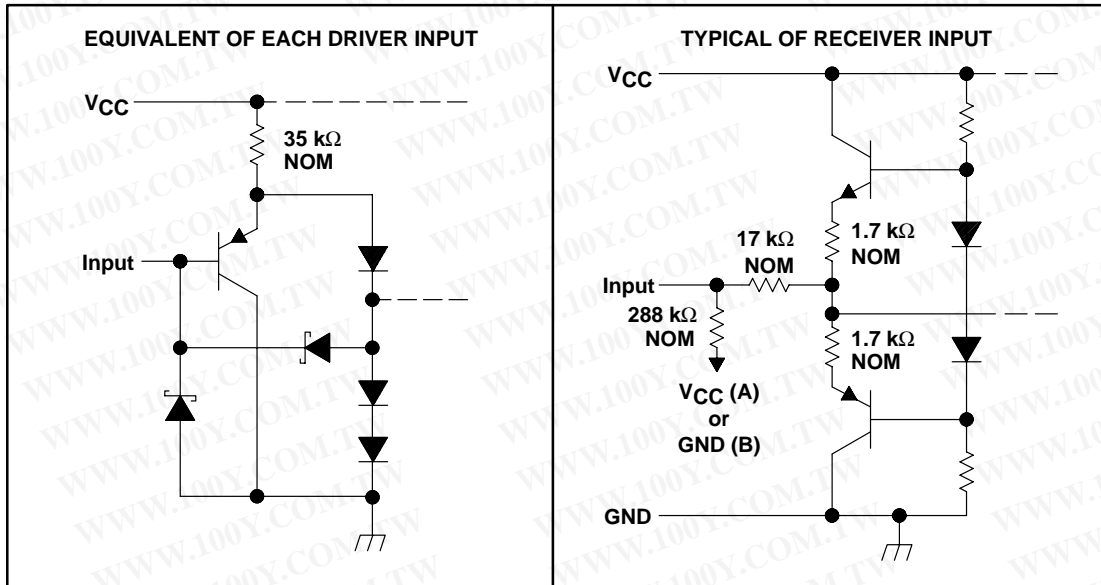


勝特力材料 886-3-5753170
 勝特力电子(上海) 86-21-54151736
 勝特力电子(深圳) 86-755-83298787
[Http://www.100y.com.tw](http://www.100y.com.tw)

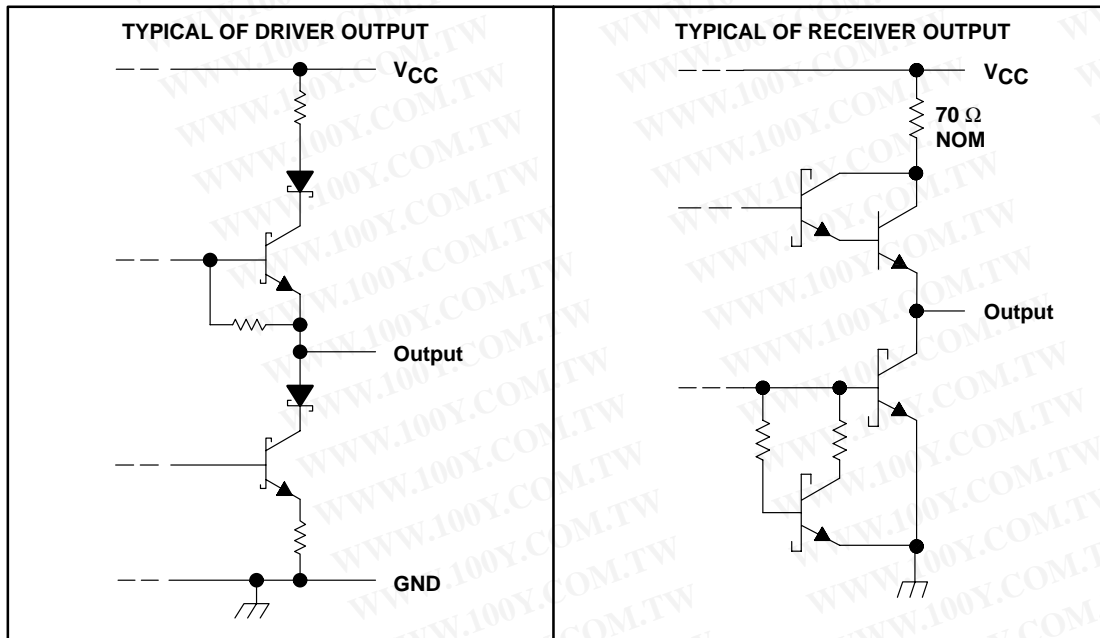
SN75ALS181 DIFFERENTIAL DRIVER AND RECEIVER PAIR

SLLS152B – DECEMBER 1992 – REVISED APRIL 2003

schematics of inputs



schematics of outputs



勝特力材料 886-3-5753170
 勝特力电子(上海) 86-21-54151736
 勝特力电子(深圳) 86-755-83298787
[Http://www.100y.com.tw](http://www.100y.com.tw)

SN75ALS181 DIFFERENTIAL DRIVER AND RECEIVER PAIR

SLLS152B – DECEMBER 1992 – REVISED APRIL 2003

absolute maximum ratings over operating free-air temperature range (unless otherwise noted)†

Supply voltage, V_{CC} (see Note 1)	7 V
Input voltage, D, DE, and \overline{RE} inputs	7 V
Output voltage range, driver	-9 V to 14 V
Input voltage range, receiver	-14 V to 14 V
Receiver differential input voltage range (see Note 2)	-14 V to 14 V
Package thermal impedance, θ_{JA} (see Notes 3 and 4): N package	80°C/W
NS package	76°C/W
Operating virtual junction temperature, T_J	150°C
Lead temperature 1,6 mm (1/16 inch) from case for 10 seconds	260°C
Storage temperature range, T_{stg}	-65°C to 150°C

† Stresses beyond those listed under “absolute maximum ratings” may cause permanent damage to the device. These are stress ratings only, and functional operation of the device at these or any other conditions beyond those indicated under “recommended operating conditions” is not implied. Exposure to absolute-maximum-rated conditions for extended periods may affect device reliability.

- NOTES:
1. All voltage values, except differential input voltage, are with respect to network ground terminal.
 2. Differential input voltage is measured at the noninverting terminal with respect to the inverting terminal.
 3. Maximum power dissipation is a function of $T_{J(max)}$, θ_{JA} , and T_A . The maximum allowable power dissipation at any allowable ambient temperature is $P_D = (T_{J(max)} - T_A)/\theta_{JA}$. Operating at the absolute maximum T_J of 150°C can affect reliability.
 4. The package thermal impedance is calculated in accordance with JESD 51-7.

recommended operating conditions

		MIN	NOM	MAX	UNIT	
V_{CC}	Supply voltage	4.75	5	5.25	V	
V_{OC}	Common-mode output voltage (see Note 5)					
			Driver	-7	12	V
V_{IC}	Common-mode input voltage (see Note 5)					
			Receiver	-12	12	V
V_{IH}	High-level input voltage		D, DE, and \overline{RE}	2		V
V_{IL}	Low-level input voltage		D, DE, and \overline{RE}		0.8	V
V_{ID}	Differential input voltage				±12	V
I_{OH}	High-level output current		Driver		-60	mA
			Receiver		-400	µA
I_{OL}	Low-level output current		Driver		60	mA
			Receiver		8	
T_A	Operating free-air temperature	0		70	°C	

NOTE 5: The algebraic convention, where the less positive (more negative) limit is designated as minimum, is used in this table for common-mode output voltage level only.

勝特力材料 886-3-5753170
勝特力电子(上海) 86-21-54151736
勝特力电子(深圳) 86-755-83298787
[Http://www.100y.com.tw](http://www.100y.com.tw)



SN75ALS181 DIFFERENTIAL DRIVER AND RECEIVER PAIR

SLLS152B – DECEMBER 1992 – REVISED APRIL 2003

DRIVER SECTION

electrical characteristics over recommended ranges of supply voltage and operating free-air temperature (unless otherwise noted)

PARAMETER		TEST CONDITIONS		MIN	TYP†	MAX	UNIT
V _{IK}	Input clamp voltage	I _I = -18 mA				-1.5	V
V _O	Output voltage	I _O = 0		0		6	V
V _{OD1}	Differential output voltage	I _O = 0		1.5		6	V
V _{OD2}	Differential output voltage	V _{CC} = 5 V, R _L = 100 Ω	See Figure 1	1/2 V _{OD1}		5	V
		R _L = 54 Ω		2	2.3		
V _{OD3}	Differential output voltage	V _{test} = -7 V to 12 V,	See Figure 2	1.5		5	V
Δ V _{OD}	Change in magnitude of differential output voltage (see Note 6)	R _L = 54 Ω or 100 Ω,	See Figure 1			±0.2	V
V _{OC}	Common-mode output voltage	R _L = 54 Ω or 100 Ω,	See Figure 1			3 -1	V
Δ V _{OC}	Change in magnitude of common-mode output voltage (see Note 6)	R _L = 54 Ω or 100 Ω,	See Figure 1			±0.2	V
I _{OZ}	High-impedance-state output current	V _O = -7 V to 12 V,	See Note 7			±100	μA
I _{IH}	High-level input current	V _{IH} = 2.4 V				20	μA
I _{IL}	Low-level input current	V _{IL} = 0.4 V				-100	μA
I _{OS}	Short-circuit output current	V _O = -7 V				-250	mA
		V _O = V _{CC}				250	
		V _O = 12 V				250	
		V _O = 0 V				-150	
I _{CC}	Supply current (total package)	No load	Outputs enabled		21	30	mA
			Outputs disabled		14	21	

† All typical values are at V_{CC} = 5 V and T_A = 25°C.

NOTES: 6. Δ|V_{OD}| and Δ|V_{OC}| are the changes in magnitude of V_{OD} and V_{OC}, respectively, that occur when the input is changed from a high level to a low level.

7. This applies for both power on and power off. Refer to TIA/EIA-485-A for exact conditions.

switching characteristics over recommended ranges of supply voltage and operating free-air temperature (unless otherwise noted)

PARAMETER		TEST CONDITIONS		MIN	TYP†	MAX	UNIT
t _{dD}	Differential output delay time, t _{dDH} or t _{dDL}	R _L = 54 Ω,	C _L = 50 pF, See Figure 3	9	13	20	ns
t _{sk(p)}	Pulse skew (t _{dDH} - t _{dDL})	R _L = 54 Ω,	C _L = 50 pF, See Figure 3		1	8	ns
t _t	Differential output transition time	R _L = 54 Ω,	C _L = 50 pF, See Figure 3	3	10	16	ns
t _{PZH}	Output enable time to high level	R _L = 110 Ω,	See Figure 4		36	53	ns
t _{PZL}	Output enable time to low level	R _L = 110 Ω,	See Figure 5		39	56	ns
t _{PHZ}	Output disable time from high level	R _L = 110 Ω,	See Figure 4		20	31	ns
t _{PLZ}	Output disable time from low level	R _L = 110 Ω,	See Figure 5		9	20	ns

† All typical values are at V_{CC} = 5 V and T_A = 25°C.

勝特力材料 886-3-5753170
 勝特力电子(上海) 86-21-54151736
 勝特力电子(深圳) 86-755-83298787
 Http://www.100y.com.tw



SN75ALS181 DIFFERENTIAL DRIVER AND RECEIVER PAIR

SLLS152B – DECEMBER 1992 – REVISED APRIL 2003

RECEIVER SECTION

electrical characteristics over recommended ranges of supply voltage, common-mode input voltage, and operating free-air temperature (unless otherwise noted)

PARAMETER		TEST CONDITIONS		MIN	TYP†	MAX	UNIT	
V_{T+}	Positive-going threshold voltage, differential input	$V_O = 2.7\text{ V}$,	$I_O = -0.4\text{ mA}$			0.2	V	
V_{T-}	Negative-going threshold voltage, differential input	$V_O = 0.5\text{ V}$,	$I_O = 8\text{ mA}$	-0.2			V	
V_{hys}	Input hysteresis ($V_{T+} - V_{T-}$)				60		mV	
V_{IK}	Input clamp voltage, \overline{RE}	$I_I = -18\text{ mA}$				-1.5	V	
V_{OH}	High-level output voltage	$V_{ID} = 200\text{ mV}$,	$I_{OH} = -400\text{ }\mu\text{A}$,	See Figure 6		2.7	V	
V_{OL}	Low-level output voltage	$V_{ID} = -200\text{ mV}$,	$I_{OL} = 8\text{ mA}$,	See Figure 6		0.45	V	
I_{OZ}	High-impedance-state output current	$V_O = 0.4\text{ V to }2.4\text{ V}$				± 20	μA	
I_I	Line input current	Other input at 0 V, See Note 7	$V_I = 12\text{ V}$			1	mA	
			$V_I = -7\text{ V}$			-0.8		
I_{IH}	High-level input current, \overline{RE}	$V_{IH} = 2.7\text{ V}$				20	μA	
I_{IL}	Low-level input current, \overline{RE}	$V_{IL} = 0.4\text{ V}$				-100	μA	
r_i	Input resistance			12			k Ω	
I_{OS}	Short-circuit output current	$V_{ID} = 200\text{ mV}$,	$V_O = 0\text{ V}$	-15		-85	mA	
I_{CC}	Supply current (total package)	No load	Outputs enabled			21	30	mA
			Outputs disabled			14	21	

† All typical values are at $V_{CC} = 5\text{ V}$ and $T_A = 25^\circ\text{C}$.

NOTE 7: This applies for both power on and power off. Refer to TIA/EIA-485-A for exact conditions.

switching characteristics over recommended ranges of supply voltage and operating free-air temperature, $C_L = 15\text{ pF}$ (unless otherwise noted) (see Figure 7)

PARAMETER		TEST CONDITIONS		MIN	TYP†	MAX	UNIT
t_{PHL}	Propagation delay time, high- to low-level output	$V_{ID} = -1.5\text{ V to }1.5\text{ V}$		10	16	25	ns
t_{PLH}	Propagation delay time, low- to high-level output	$V_{ID} = -1.5\text{ V to }1.5\text{ V}$		10	16	25	ns
$t_{sk(p)}$	Pulse skew ($ t_{PLH} - t_{PHL} $)	$V_{ID} = -1.5\text{ V to }1.5\text{ V}$			1	8	ns
t_{PZH}	Output enable time to high level				7	15	ns
t_{PZL}	Output enable time to low level				9	19	ns
t_{PHZ}	Output disable time from high level				18	27	ns
t_{PLZ}	Output disable time from low level				10	15	ns

† All typical values are at $V_{CC} = 5\text{ V}$ and $T_A = 25^\circ\text{C}$.

勝特力材料 886-3-5753170
 勝特力电子(上海) 86-21-54151736
 勝特力电子(深圳) 86-755-83298787
[Http://www.100y.com.tw](http://www.100y.com.tw)



PARAMETER MEASUREMENT INFORMATION

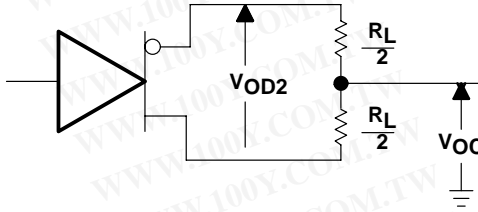


Figure 1. Driver Test Circuit, V_{OD} and V_{OC}

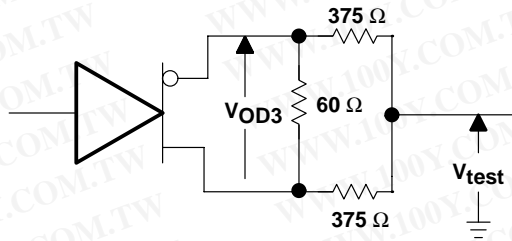
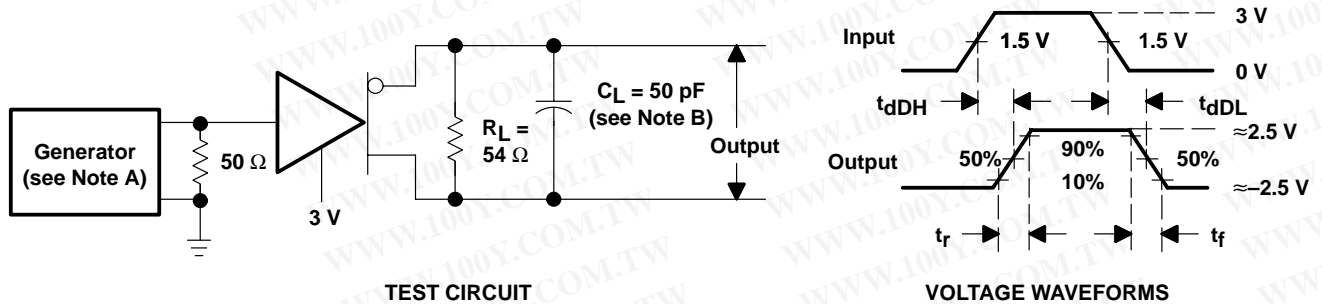


Figure 2. Driver Circuit, V_{OD3}



- NOTES: A. The input pulse is supplied by a generator having the following characteristics: $PRR \leq 1$ MHz, 50% duty cycle, $t_r \leq 6$ ns, $t_f \leq 6$ ns, $Z_O = 50 \Omega$.
B. C_L includes probe and jig capacitance.

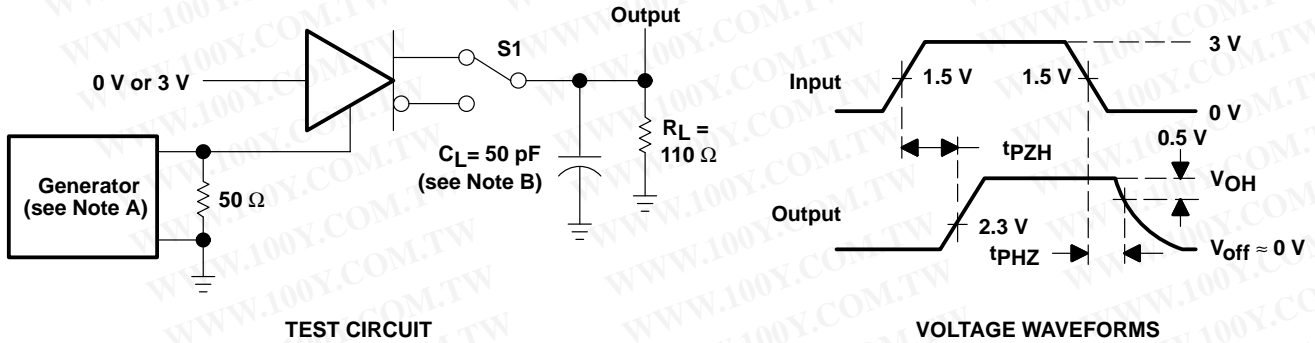
Figure 3. Driver Differential-Output Delay and Transition Times

勝特力材料 886-3-5753170
 勝特力电子(上海) 86-21-54151736
 勝特力电子(深圳) 86-755-83298787
[Http://www.100y.com.tw](http://www.100y.com.tw)

SN75ALS181 DIFFERENTIAL DRIVER AND RECEIVER PAIR

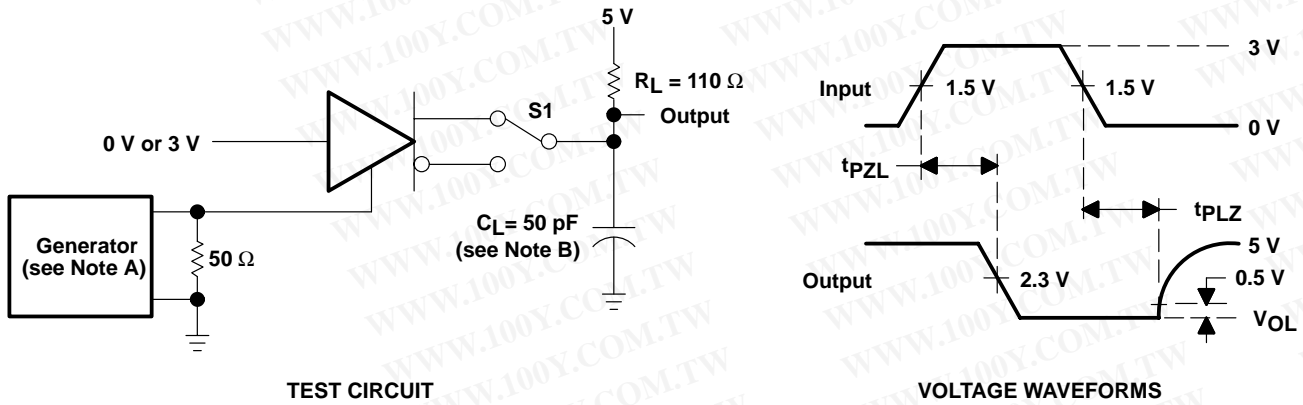
SLLS152B – DECEMBER 1992 – REVISED APRIL 2003

PARAMETER MEASUREMENT INFORMATION



- NOTES: A. The input pulse is supplied by a generator having the following characteristics: $PRR \leq 1$ MHz, 50% duty cycle, $t_r \leq 6$ ns, $t_f \leq 6$ ns, $Z_O = 50 \Omega$.
 B. C_L includes probe and jig capacitance.

Figure 4. Driver Enable and Disable Times



- NOTES: A. The input pulse is supplied by a generator having the following characteristics: $PRR \leq 1$ MHz, 50% duty cycle, $t_r \leq 6$ ns, $t_f \leq 6$ ns, $Z_O = 50 \Omega$.
 B. C_L includes probe and jig capacitance.

Figure 5. Driver Enable and Disable Times

勝特力材料 886-3-5753170
 勝特力电子(上海) 86-21-54151736
 勝特力电子(深圳) 86-755-83298787
[Http://www.100y.com.tw](http://www.100y.com.tw)

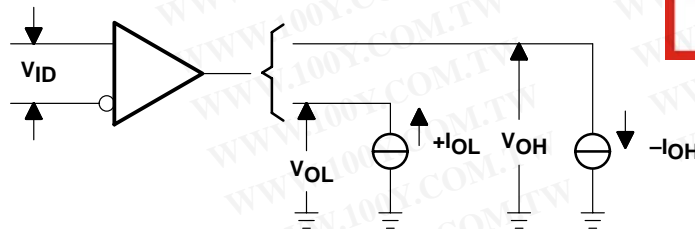
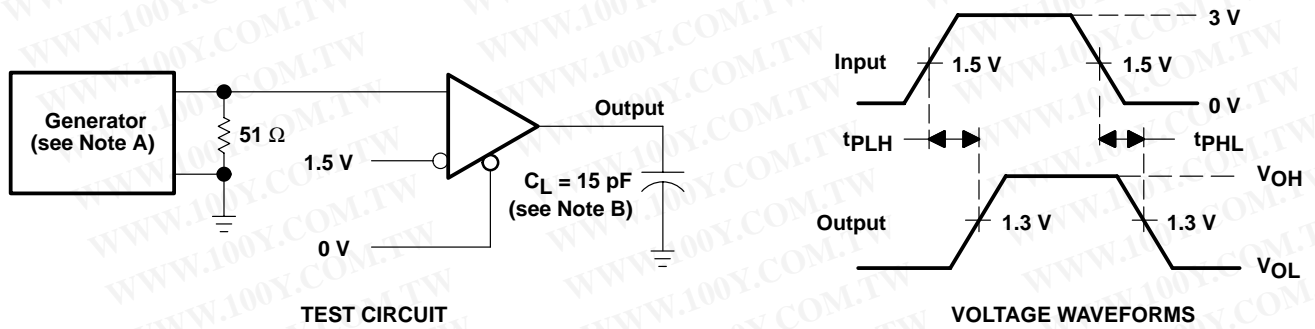


Figure 6. Receiver, V_{OH} and V_{OL}

PARAMETER MEASUREMENT INFORMATION



- NOTES: A. The input pulse is supplied by a generator having the following characteristics: PRR \leq 1 MHz, 50% duty cycle, $t_r \leq$ 6 ns, $t_f \leq$ 6 ns, $Z_O = 50 \Omega$.
 B. C_L includes probe and jig capacitance.

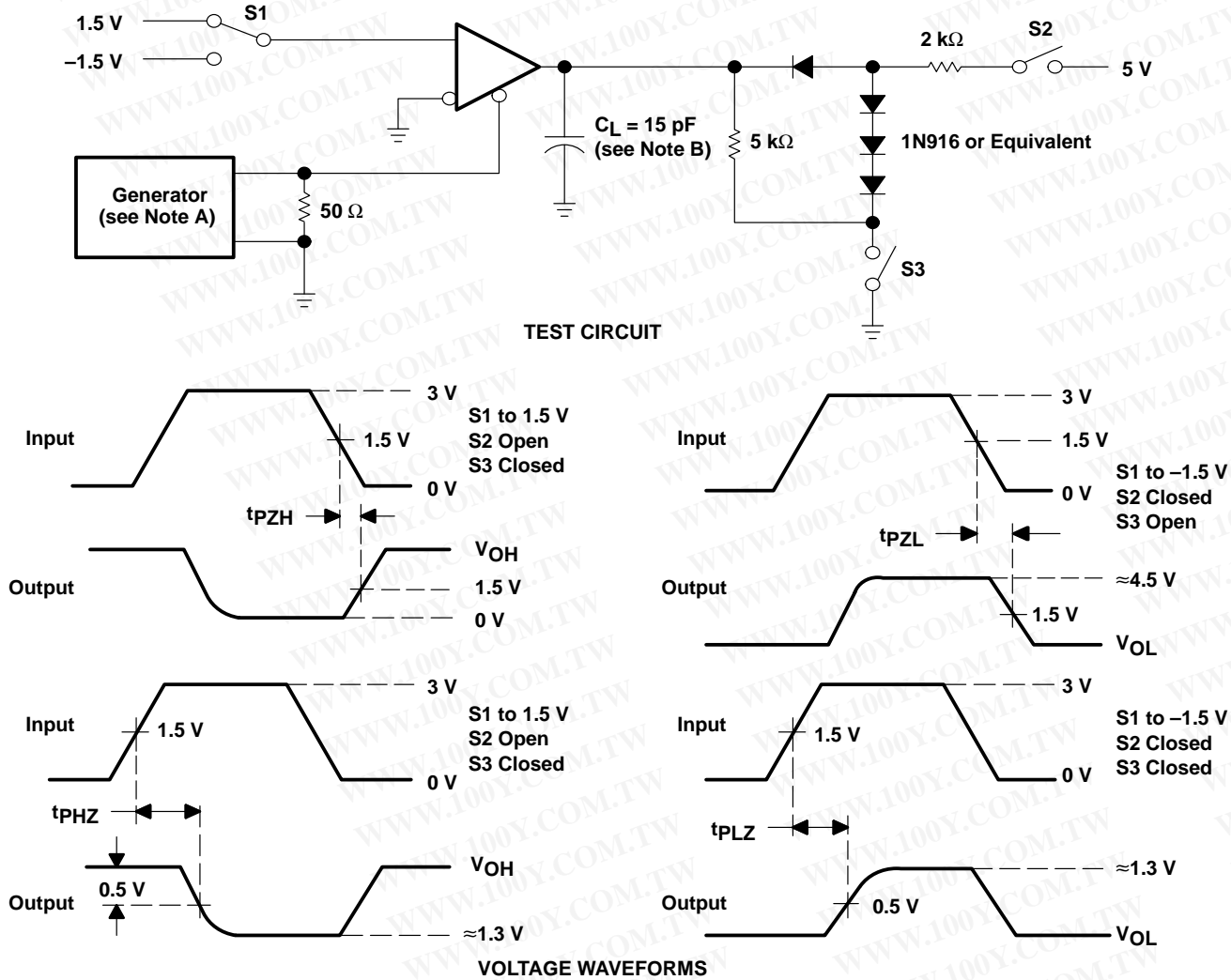
Figure 7. Receiver Propagation-Delay Times

勝特力材料 86-3-5753170
 勝特力电子(上海) 86-21-54151736
 勝特力电子(深圳) 86-755-83298787
[Http://www.100y.com.tw](http://www.100y.com.tw)

SN75ALS181 DIFFERENTIAL DRIVER AND RECEIVER PAIR

SLLS152B – DECEMBER 1992 – REVISED APRIL 2003

PARAMETER MEASUREMENT INFORMATION



- NOTES: A. The input pulse is supplied by a generator having the following characteristics: $\text{PRR} \leq 1 \text{ MHz}$, 50% duty cycle, $t_r \leq 6 \text{ ns}$, $t_f \leq 6 \text{ ns}$, $Z_O = 50 \Omega$.
B. C_L includes probe and jig capacitance.

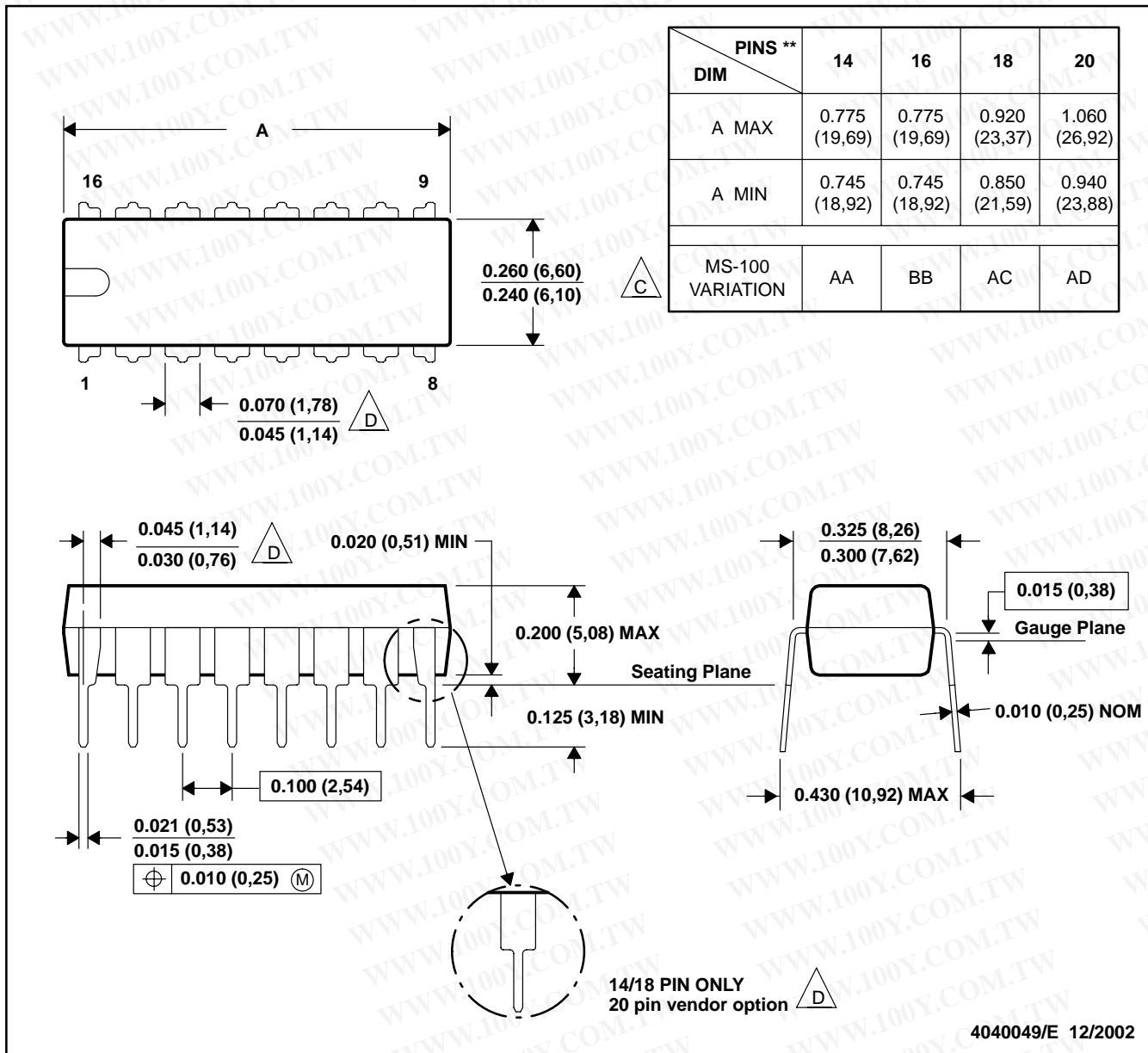
Figure 8. Receiver Output Enable and Disable Times

勝特力材料 886-3-5753170
 勝特力电子(上海) 86-21-54151736
 勝特力电子(深圳) 86-755-83298787
[Http://www.100y.com.tw](http://www.100y.com.tw)

N (R-PDIP-T**)

PLASTIC DUAL-IN-LINE PACKAGE

16 PINS SHOWN



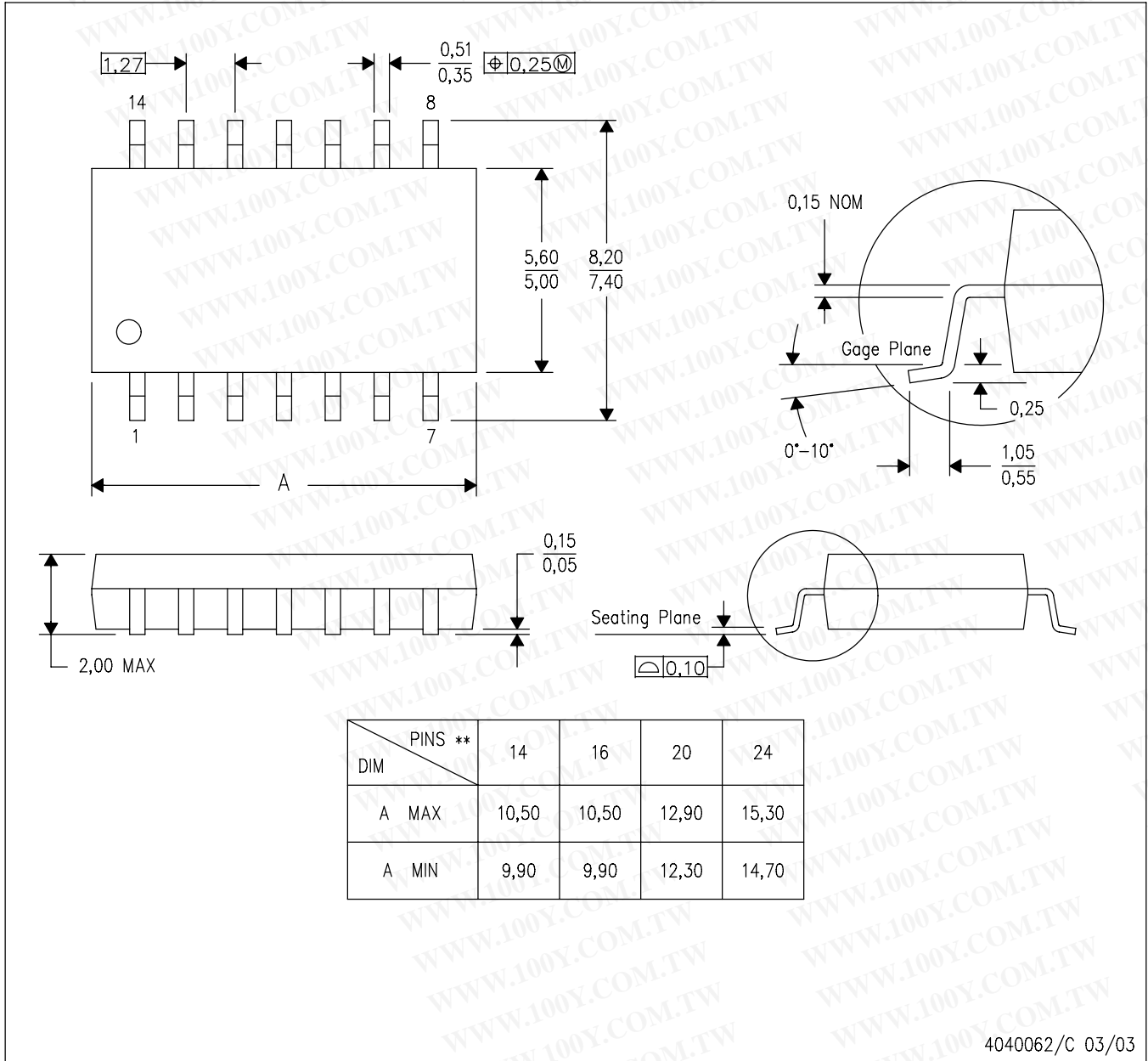
- NOTES: A. All linear dimensions are in inches (millimeters).
 B. This drawing is subject to change without notice.
 C Falls within JEDEC MS-001, except 18 and 20 pin minimum body length (Dim A).
 D The 20 pin end lead shoulder width is a vendor option, either half or full width.

勝特力材料 886-3-5753170
 勝特力电子(上海) 86-21-54151736
 勝特力电子(深圳) 86-755-83298787
[Http://www.100y.com.tw](http://www.100y.com.tw)

勝特力材料 886-3-5753170
 勝特力电子(上海) 86-21-54151736
 勝特力电子(深圳) 86-755-83298787
[Http://www.100y.com.tw](http://www.100y.com.tw)

NS (R-PDSO-G**)
 14-PIN SHOWN

PLASTIC SMALL-OUTLINE PACKAGE



NOTES: A. All linear dimensions are in millimeters.
 B. This drawing is subject to change without notice.
 C. Body dimensions do not include mold flash or protrusion, not to exceed 0,15.