

# OPTO 22

## DATA SHEET

Form 443-041112

# I/O MODULES STANDARD ANALOG INPUT

page 1/8

### Connections

Each Opto 22 **AD3**, **AD3T**, and **AD2T** analog input module provides a single channel of optically-isolated current-to-digital conversion. The AD3T and AD2T modules offer additional channel-to-channel isolation. For the AD3 and AD3T modules, the nominal input range is 4 to 20 mA with an under/over range capability from less than 3 mA to greater than 35 mA. The AD2T module has a nominal input range of 0 to 20 mA with an under/over range capability from less than -1.25 mA to greater than 35 mA. The "T" modules also provide 4,000 V<sub>rms</sub> channel-to-channel isolation which eliminates any loop problems. These modules plug into a Classic Standard analog I/O rack and are secured by a captive screw.

Part Numbers	Description
AD3	4 to 20 mA Input
AD3T	4 to 20 mA Input Isolated
AD2T	0 to 20 mA Input Isolated

勝特力材料 886-3-5753170  
勝特力电子(上海) 86-21-54151736  
勝特力电子(深圳) 86-755-83298787  
[Http://www.100y.com.tw](http://www.100y.com.tw)



# OPTO 22

## DATA SHEET

Form 443-041112

### Specifications

# I/O MODULES STANDARD ANALOG INPUT

page 2/8

勝特力材料 886-3-5753170  
 勝特力电子(上海) 86-21-54151736  
 勝特力电子(深圳) 86-755-83298787  
[Http://www.100y.com.tw](http://www.100y.com.tw)

	AD3	AD3T	AD2T
Input Impedance	249 Ohms	249 Ohms	50 Ohms
Nominal Input Range	4 to 20 mA	4 to 20 mA	0 to 20 mA
Over/under Range	3 to 35 mA	3 to 35 mA	-1.25 to 35 mA
Accuracy	16 $\mu$ A (0.1% of span)	16 $\mu$ A (0.1% of span)	20 $\mu$ A (0.1% of span)
Resolution	12 bits (3.9 $\mu$ A)	12 bits (3.9 $\mu$ A)	12 bits (4.9 $\mu$ A)
Response Time	Full-scale step change in 3 ms		
Isolation Transient Input-to-Output Input-to-Analog-Supply	4,000 Vrms n/a	4,000 Vrms 4,000 Vrms	4,000 Vrms 4,000 Vrms
Power Requirements	13 mA at +15 VDC 7.5 mA at -15 VDC	35 mA at +15 VDC 35 mA at -15 VDC	35 mA at +15 VDC 35 mA at -15 VDC
Ambient Temperature: Operating Storage	0° to 70° C - 25° to 85° C		

### Connections

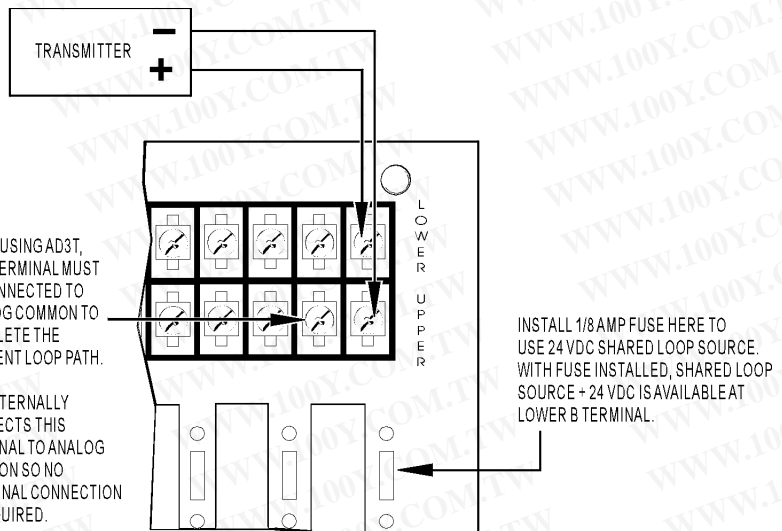
#### AD3 MODULES USING SELF-POWERED TRANSMITTER

**NOTE:** For connecting the **AD2T** module, use AD3T module diagrams and instructions.

**AD3T:** All of the lower A terminals on the mounting rack are tied together. These provide a convenient tie point for shared loop source return. To use the AD3T module with a common loop power supply, connect any one lower A terminal to the shared loop source "-", then jumper upper A to lower A for each AD3T.

**NOTE:** WHEN USING AD3T, THIS TERMINAL MUST BE CONNECTED TO ANALOG COMMON TO COMPLETE THE CURRENT LOOP PATH.

AD3 INTERNALLY CONNECTS THIS TERMINAL TO ANALOG COMMON SO NO EXTERNAL CONNECTION IS REQUIRED.



# OPTO 22

## DATA SHEET

Form 443-041112

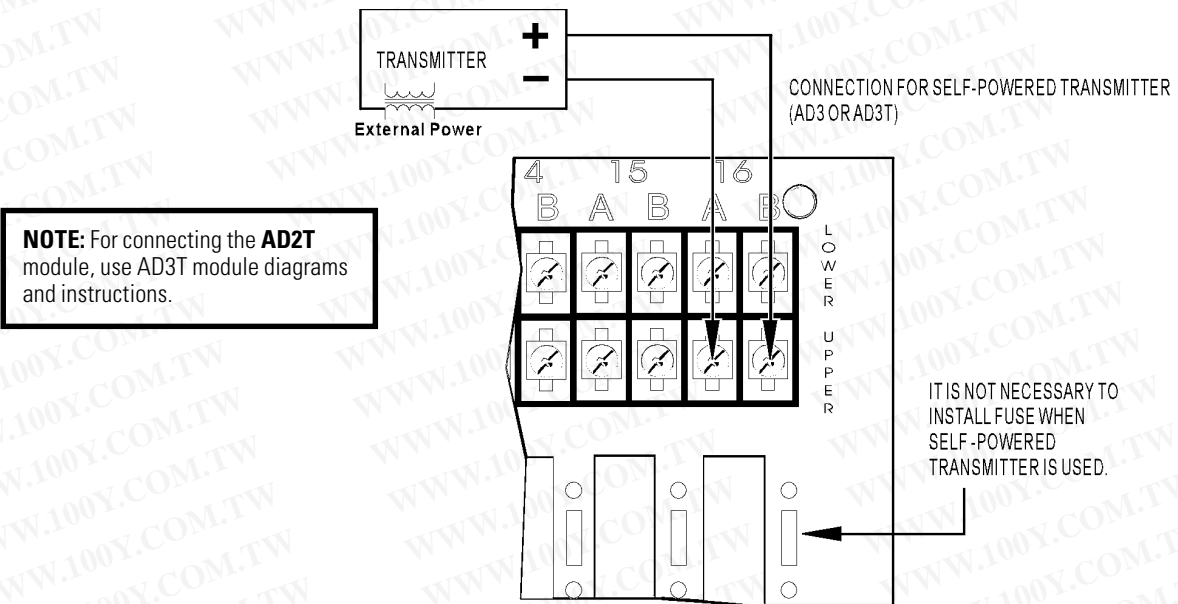
# I/O MODULES STANDARD ANALOG INPUT

page 3/8

勝特力材料 886-3-5753170  
勝特力电子(上海) 86-21-54151736  
勝特力电子(深圳) 86-755-83298787  
[Http://www.100y.com.tw](http://www.100y.com.tw)

### Connections

#### AD3 MODULES USING SELF-POWERED TRANSMITTER



# OPTO 22

## DATA SHEET

Form 443-041112

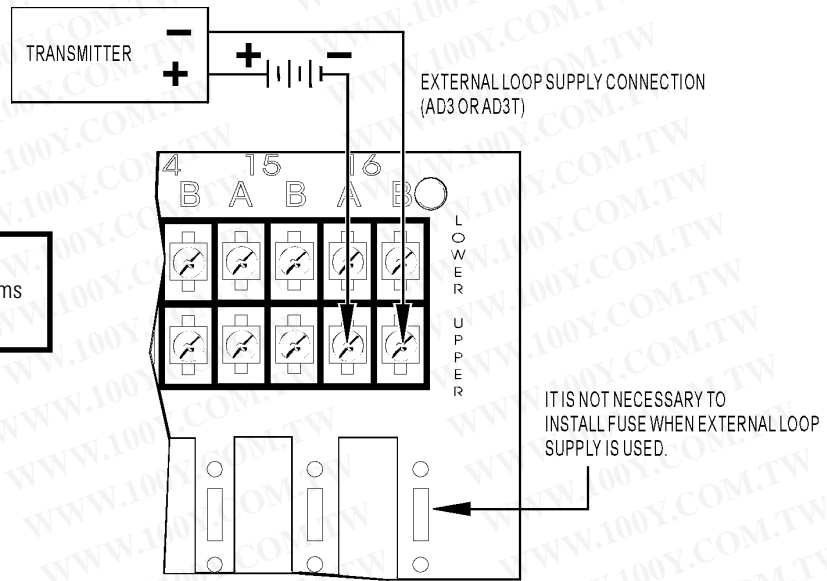
# I/O MODULES STANDARD ANALOG INPUT

page 4/8

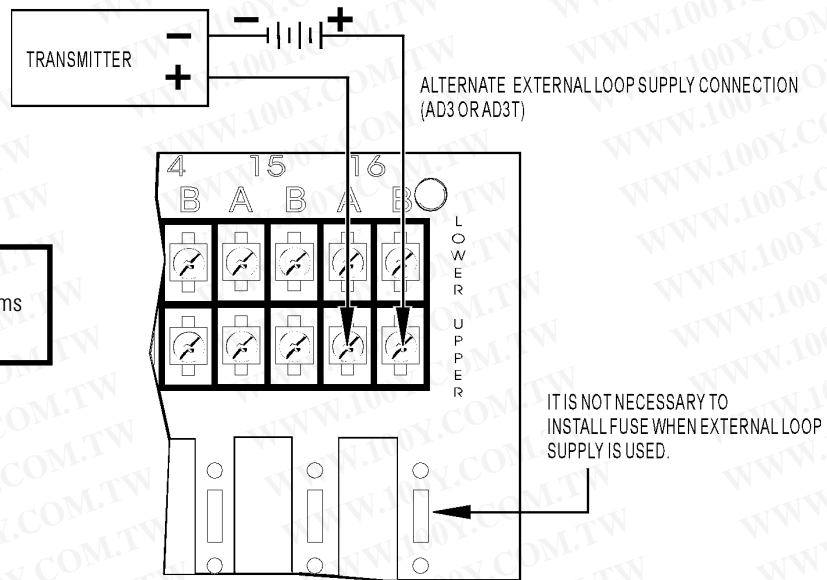
### Connections (cont.)

勝特力材料 886-3-5753170  
勝特力电子(上海) 86-21-54151736  
勝特力电子(深圳) 86-755-83298787  
[Http://www.100y.com.tw](http://www.100y.com.tw)

**NOTE:** For connecting the **AD2T** module, use AD3T module diagrams and instructions.



**NOTE:** For connecting the **AD2T** module, use AD3T module diagrams and instructions.



# OPTO 22

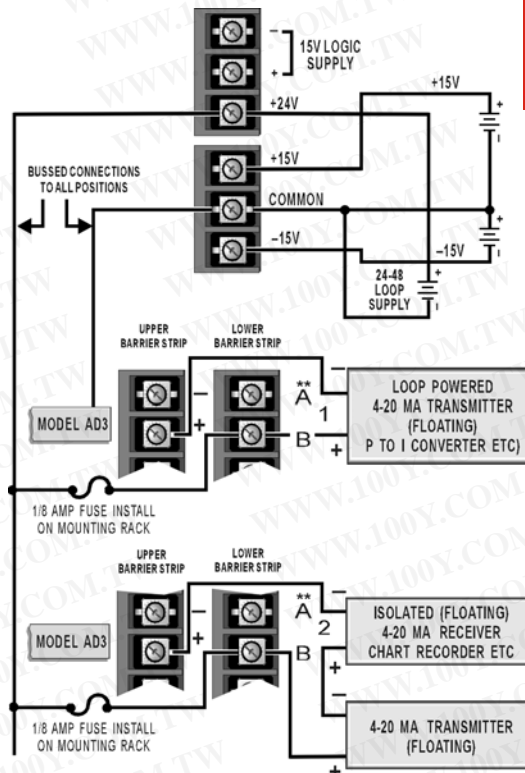
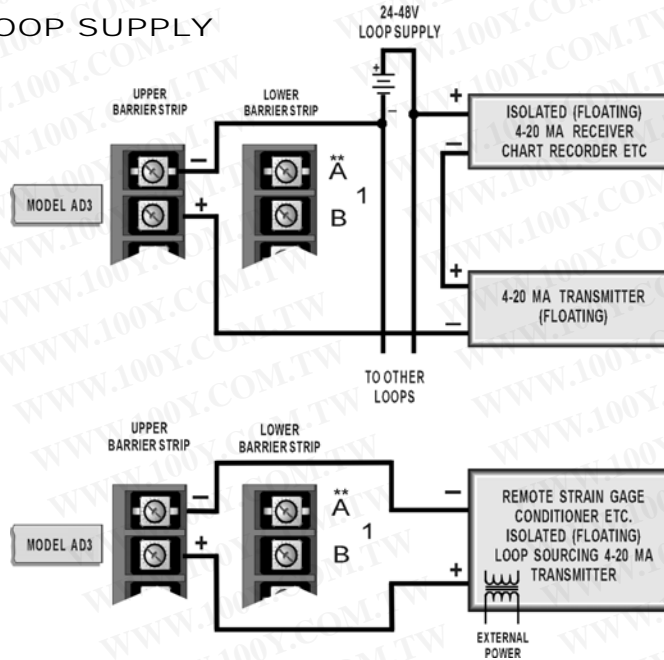
## DATA SHEET

Form 443-041112

# I/O MODULES STANDARD ANALOG INPUT

page 5/8

### Connections LOOP SUPPLY



勝特力材料 886-3-5753170  
勝特力电子(上海) 86-21-54151736  
勝特力电子(深圳) 86-755-83298787  
[Http://www.100y.com.tw](http://www.100y.com.tw)

# OPTO 22

## DATA SHEET

Form 443-041112

# I/O MODULES STANDARD ANALOG INPUT

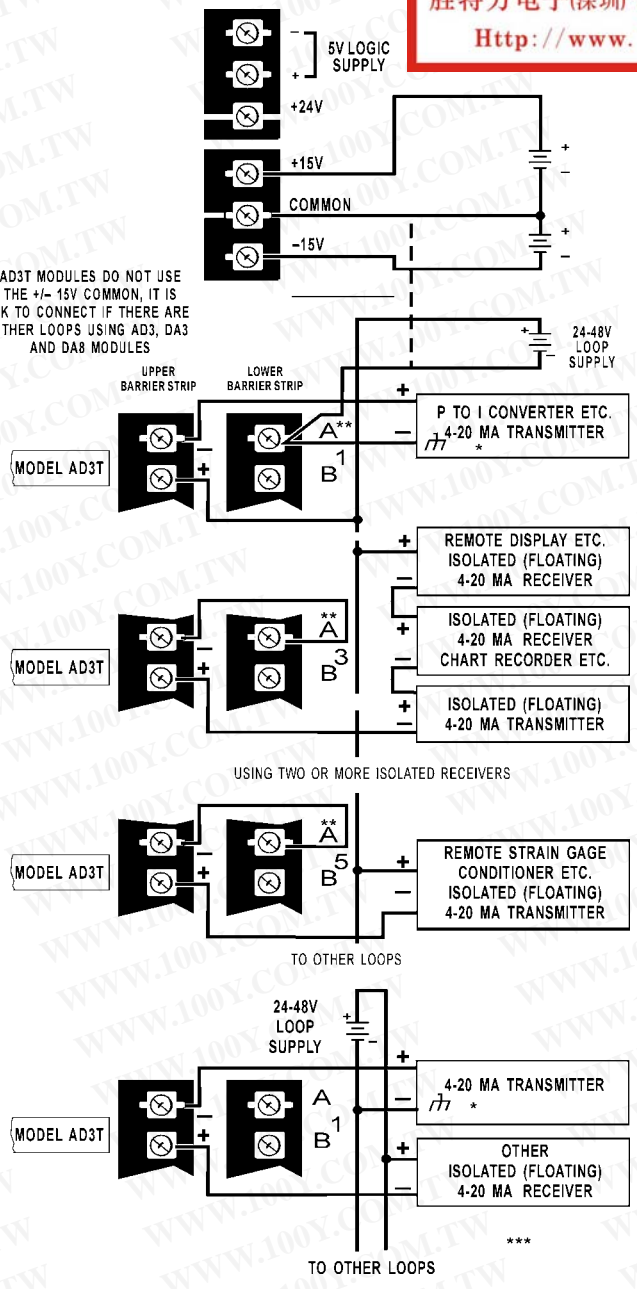
page 6/8

### Connections LOOP SUPPLY (CONT.)

**NOTE:** For connecting the **AD2T** module, use AD3T module diagrams and instructions.

AD3T MODULES DO NOT USE THE +/- 15V COMMON, IT IS OK TO CONNECT IF THERE ARE OTHER LOOPS USING AD3, DA3 AND DA8 MODULES

勝特力材料 886-3-5753170  
 勝特力电子(上海) 86-21-54151736  
 勝特力电子(深圳) 86-755-83298787  
[Http://www.100y.com.tw](http://www.100y.com.tw)



# OPTO 22

## DATA SHEET

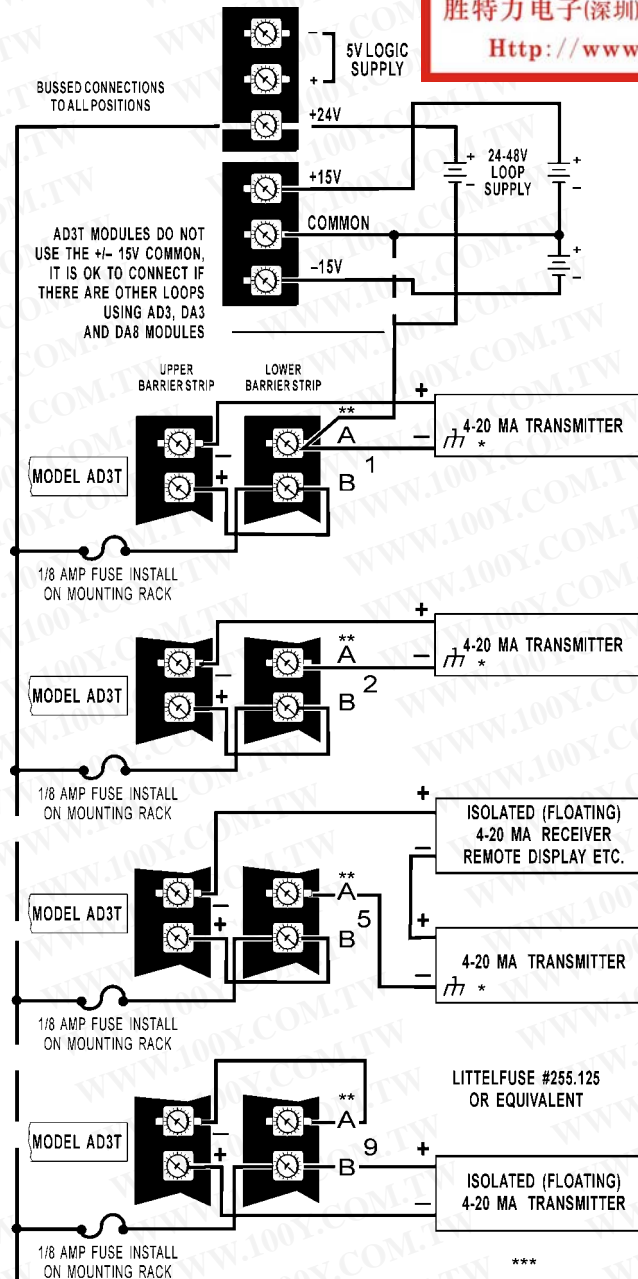
Form 443-041112

# I/O MODULES STANDARD ANALOG INPUT

page 7/8

### Connections LOOP SUPPLY (CONT.)

**NOTE:** For connecting the AD2T module, use AD3T module diagrams and instructions.



勝特力材料 886-3-5753170  
勝特力电子(上海) 86-21-54151736  
勝特力电子(深圳) 86-755-83298787  
[Http://www.100y.com.tw](http://www.100y.com.tw)

# OPTO 22

## DATA SHEET

Form 443-041112

# I/O MODULES STANDARD ANALOG INPUT

page 8/8

### Schematics

ANALOG MOUNTING RACK  
SCHEMATIC (PB4AH, PB8AH,  
PB16AH)

勝特力材料 886-3-5753170  
勝特力电子(上海) 86-21-54151736  
勝特力电子(深圳) 86-755-83298787  
[Http://www.100y.com.tw](http://www.100y.com.tw)

