

Compact SSRs Ideal for Built-in Applications

- Vertical, compact SSRs with an operation indicator offered in versatile variations.
- High dielectric strength of 2,500 VAC for 2-A models.
- High-voltage DC version also available.
- Approved by UL and CSA.



Ordering Information

| Terminals | Isolation | Zero cross function | Indicator | Rated output load (Applicable output load) | Rated input voltage | Model |
|-----------|--------------|---------------------|-----------|---|---------------------|---------------|
| PCB | Phototriac | Yes | | 2 A at 100 to 120 VDC (2 A at 75 to 132 VDC) (see note 1) | | G3R-102PN-US |
| | | No | | | | G3R-102PLN-US |
| | | Yes | | 2 A at 100 to 240 VAC (2 A at 75 to 264 VAC) (see note 2) | | G3R-202PN-US |
| | | No | | | | G3R-202PLN-US |
| | Photocoupler | --- | Yes | 1.5 A at 5 to 110 VDC (1.5 A at 3 to 125 VDC) | | G3RD-101PN-US |
| | | | | 2 A at 4 to 48 VDC (2 A at 3 to 52.8 VDC) (see note 3) | | G3RD-X02PN-US |

- Note:**
1. Product is labelled "125 VAC".
 2. Product is labelled "250 VAC".
 3. Product is labelled "50 VDC".

勝特力電材超市-龍山店 886-3-5773766
 勝特力電材超市-光復店 886-3-5729570
 勝特力電子(上海) 86-21-34970699
 勝特力電子(深圳) 86-755-83298787
<http://www.100y.com.tw>

Specifications

■ Ratings

Input (AC Output With Zero Cross Function)

| Model | Rated voltage | Operating voltage | Impedance | Voltage level | |
|-----------|---------------|-------------------|-------------------------|----------------------|----------------------|
| | | | | Must operate voltage | Must release voltage |
| G3R-102PN | 5 VDC | 4 to 6 VDC | 250 $\Omega \pm 20\%$ | 3.5 VDC max. | 0.375 VDC min. |
| G3R-202PN | 12 VDC | 9.6 to 14.4 VDC | 600 $\Omega \pm 20\%$ | 8.4 VDC max. | 0.9 VDC min. |
| | 24 VDC | 19.2 to 28.8 VDC | 1.5 k $\Omega \pm 20\%$ | 16.8 VDC max. | 1.8 VDC min. |

Input (AC Output Without Zero Cross Function, DC Output)

| Model | Rated voltage | Operating voltage | Impedance | Voltage level | |
|------------|---------------|-------------------|-------------------------|----------------------|----------------------|
| | | | | Must operate voltage | Must release voltage |
| G3R-102PLN | 5 VDC | 4 to 6 VDC | 300 $\Omega \pm 20\%$ | 3.5 VDC max. | 0.375 VDC min. |
| G3R-202PLN | 12 VDC | 9.6 to 14.4 VDC | 750 $\Omega \pm 20\%$ | 8.4 VDC max. | 0.9 VDC min. |
| G3RD-X02PN | 24 VDC | 19.2 to 28.8 VDC | 1.5 k $\Omega \pm 20\%$ | 16.8 VDC max. | 1.8 VDC min. |
| G3RD-101PN | | | | | |

Output

| Model | Rated load voltage | Applicable load | | |
|-------------------------|--------------------|--------------------|---------------|-----------------------|
| | | Load voltage range | Load current | Inrush current |
| G3R-102PN G3R-102PLN | 100 to 120 VAC | 75 to 132 VAC | 0.1 to 2 A | 30 A (60 Hz, 1 cycle) |
| G3R-202PN G3R-202PLN | 100 to 240 VAC | 75 to 264 VAC | 0.1 to 2 A | |
| G3RD-X02PN | 4 to 48 VDC | 3 to 52.8 VDC | 0.01 to 2 A | 8 A (10 ms) |
| G3RD-101PN | 5 to 110 VDC | 3 to 125 VDC | 0.01 to 1.5 A | 2.5 A (10 ms) |

■ Characteristics

| Item | G3R-102PLN | G3R-102PN | G3R-202PLN | G3R-202PN | G3RD-X02PN/-101PN |
|------------------------|---|--|--|--|---|
| Operate time | 1 ms max. | 1/2 of load power source cycle + 1 ms max. | 1 ms max. | 1/2 of load power source cycle + 1 ms max. | 1 ms max. |
| Release time | 1/2 of load power source cycle + 1 ms max. | | | | 1 ms max. |
| Output ON voltage drop | 1.6 V (RMS) max. | | | | 1.5 V max. |
| Leakage current | 2 mA max. (at 100 VAC) | | 2 mA max. (at 100 VAC) 5 mA max. (at 200 VAC) | | 0.1 mA max. (at 125 VDC) 0.1 mA max. (at 50 VDC) |
| Insulation resistance | 100 M Ω min. (at 500 VDC) | | | | |
| Dielectric strength | 2,500 VAC, 50/60 Hz for 1 min | | | | 2,500 VAC, 50/60 Hz for 1 min |
| Vibration resistance | Malfunction: 10 to 55 Hz, 1.5-mm double amplitude | | | | |
| Shock resistance | Malfunction: 1,000 m/s ² | | | | |
| Ambient temperature | Operating: -30°C to 80°C (with no icing or condensation) Storage: -30°C to 100°C (with no icing or condensation) | | | | |
| Approved standards | UL508 File No. E64562, CSA C22.2 (No. 14) File No. 35535 | | | | |
| Ambient humidity | Operating: 45% to 85% | | | | |
| Weight | Approx. 18 g | | | | |

■ Approved Standards

UL508 File No. E64562/CSA C22.2 (No.0, No.14) File No. LR35535

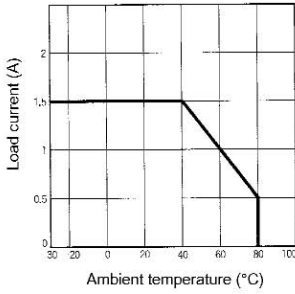
| Model | Ratings |
|-------------------|----------------|
| G3R-102P(L)(N)-US | 2 A at 125 VAC |
| G3R-202P(L)(N)-US | 2 A at 250 VAC |
| G3RD-X02P(N)-US | 2 A at 50 VDC |

Engineering Data

Load Current vs. Ambient Temperature Characteristics

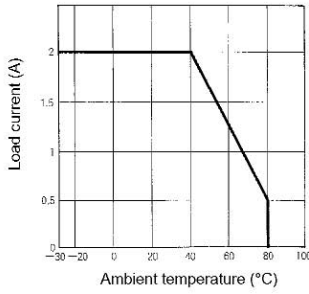
1-A Load Model

G3RD-101PN



2-A Load Model

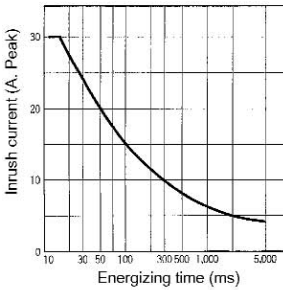
G3R-102□, G3RD-X02□, G3R-202□



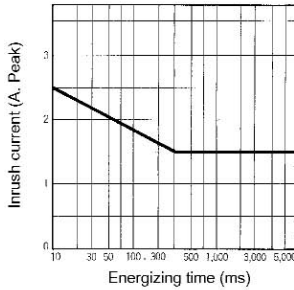
Inrush Current Resistivity

Non-repetitive (Keep the inrush current to half the rated value if it occurs repetitively.)

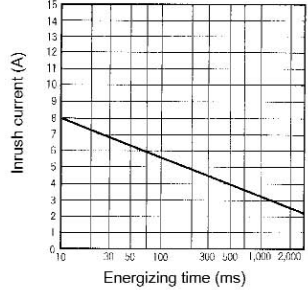
G3R-102□/-202□



G3RD-101PN



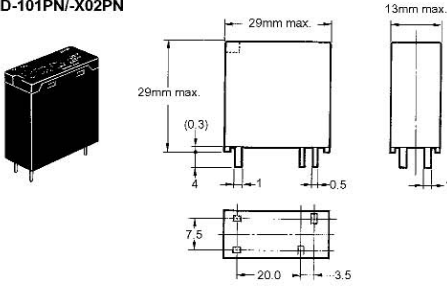
G3RD-X02□



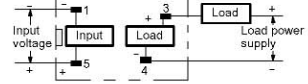
Dimensions

Note: All units are in millimeters unless otherwise indicated.

G3R-102P□/V-202P□
G3RD-101PN/-X02PN

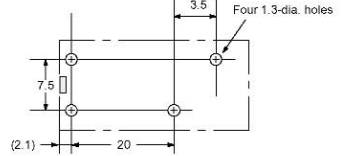


Terminal Arrangement/ Internal Connections (Bottom View)



Note: The plus and minus symbols shown in the parentheses are for DC loads.

Mounting Holes



Precautions

Connection

The SSR for DC switching a surge can connect to a load regardless of the polarity of the positive and negative output terminals.

Protective Terminal

For AC inductive loads, connect the load terminals of the SSR to a surge absorber (varistor).

ALL DIMENSIONS SHOWN ARE IN MILLIMETRES.

To convert millimetres into inches, multiply by 0.03937. To convert grams into ounces, multiply by 0.03527.

Mouser Electronics

Authorized Distributor

Click to View Pricing, Inventory, Delivery & Lifecycle Information:

[Omron:](#)

[G3R-OA202SLN-DC5-24](#) [G3RDX02PN2DC24](#) [G3RZ-201SLN DC12](#) [G3R-OD201SN DC5-24](#) [G3R-IDZR1SN-1 DC12-24](#) [G3R-IDZR1SN DC12-24](#) [G3R-202PN-US DC24](#) [G3RD-X02PN DC24](#) [G3R-OA202SZN-UTU DC5-24](#) [G3R-202PN-2 DC24](#) [G3R-ODX02SN-UTU DC5-24](#) [G3R-IDZR1SN-1 DC5](#) [G3R-OD201SN-UTU DC5-24](#) [G3RD-X02PN-2 DC24](#) [G3R-OA202SLNDC5-24](#) [G3R-IAZR1SN-UTU AC100-240](#)