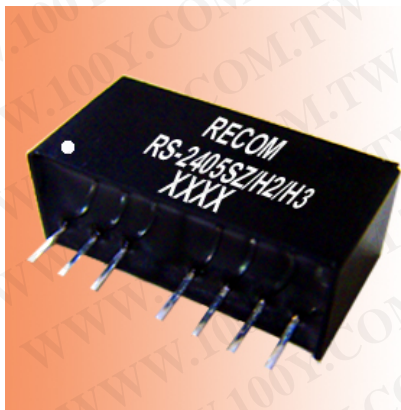


RECOM COIL TECHNOLOGY CORPORATION

DC/DC CONVERTER RS(O)-XXXXXSZ/DZ/H2(3)

SERIES 1~2WATTS SIP8 REGULATED 1~3KVdc ISOLATION

Features



- 4:1 Wide Range Voltage Input
- 1 ~ 3KVdc Isolation
- Efficiency up to 84%
- UL 94V-0 Package Material
- Excellent Load and Line Regulation
- Single & Dual Output
- Continuous Short Circuit Protection
- No External capacitor Needed
- External ON/OFF control
- RoHS DIRECTIVE COMPLIANT

Models

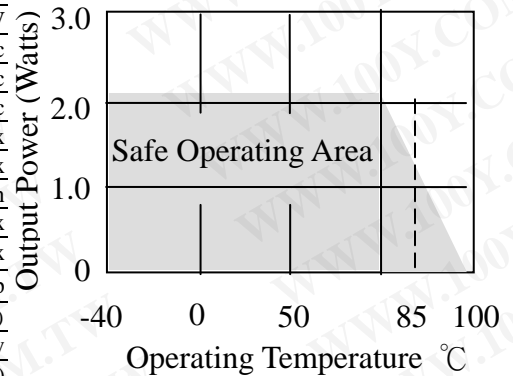
Part Number	(2KV)	(3KV)	Input Voltage Range	Output Voltage	Output current Max.	Efficiency Max.	Capacitive Load Max.
1W							
RSO-243.3SZ	(H2)	(H3)	9 ~ 36 VDC (24 VDC nominal)	3.3 VDC	300 mA	70 %	470 μ F
RSO-2405SZ	(H2)	(H3)		5 VDC	200 mA	78 %	470 μ F
RSO-2409SZ	(H2)	(H3)		9 VDC	111 mA	81 %	220 μ F
RSO-2412SZ	(H2)	(H3)		12 VDC	83 mA	83 %	100 μ F
RSO-2415SZ	(H2)	(H3)		15 VDC	67 mA	83 %	47 μ F
RSO-243.3DZ	(H2)	(H3)		\pm 3.3 VDC	\pm 150 mA	74 %	\pm 220 μ F
RSO-2405DZ	(H2)	(H3)		\pm 5 VDC	\pm 100 mA	77 %	\pm 220 μ F
RSO-2409DZ	(H2)	(H3)		\pm 9 VDC	\pm 56 mA	78 %	\pm 100 μ F
RSO-2412DZ	(H2)	(H3)		\pm 12 VDC	\pm 42 mA	80 %	\pm 47 μ F
RSO-2415DZ	(H2)	(H3)		\pm 15 VDC	\pm 34 mA	80 %	\pm 22 μ F
RSO-483.3SZ	(H2)	(H3)	18 ~ 72 VDC (48 VDC nominal)	3.3 VDC	300 mA	70 %	470 μ F
RSO-4805SZ	(H2)	(H3)		5 VDC	200 mA	75 %	470 μ F
RSO-4809SZ	(H2)	(H3)		9 VDC	111 mA	78 %	220 μ F
RSO-4812SZ	(H2)	(H3)		12 VDC	83 mA	80 %	100 μ F
RSO-4815SZ	(H2)	(H3)		15 VDC	67 mA	80 %	47 μ F
RSO-483.3DZ	(H2)	(H3)		\pm 3.3 VDC	\pm 150 mA	70 %	\pm 220 μ F
RSO-4805DZ	(H2)	(H3)		\pm 5 VDC	\pm 100 mA	75 %	\pm 220 μ F
RSO-4809DZ	(H2)	(H3)		\pm 9 VDC	\pm 56 mA	78 %	\pm 100 μ F
RSO-4812DZ	(H2)	(H3)		\pm 12 VDC	\pm 42 mA	80 %	\pm 47 μ F
RSO-4815DZ	(H2)	(H3)		\pm 15 VDC	\pm 34 mA	80 %	\pm 22 μ F
2W							
RS-243.3SZ	(H2)	(H3)	9 ~ 36 VDC (24 VDC nominal)	3.3 VDC	500 mA	75 %	1000 μ F
RS-2405SZ	(H2)	(H3)		5 VDC	400 mA	80 %	1000 μ F
RS-2409SZ	(H2)	(H3)		9 VDC	222 mA	80 %	470 μ F
RS-2412SZ	(H2)	(H3)		12 VDC	166 mA	83 %	220 μ F
RS-2415SZ	(H2)	(H3)		15 VDC	134 mA	84 %	100 μ F
RS-243.3DZ	(H2)	(H3)		\pm 3.3 VDC	\pm 250 mA	73 %	\pm 470 μ F
RS-2405DZ	(H2)	(H3)		\pm 5 VDC	\pm 200 mA	77 %	\pm 470 μ F
RS-2409DZ	(H2)	(H3)		\pm 9 VDC	\pm 111 mA	80 %	\pm 220 μ F

RS-2412DZ	(H2)	(H3)		±12 VDC	±83 mA	81 %	±100 μ F
RS-2415DZ	(H2)	(H3)		±15 VDC	±67 mA	83 %	±47 μ F
RS-483.3SZ	(H2)	(H3)	18 ~ 72 VDC (48 VDC nominal)	3.3 VDC	500 mA	75 %	1000 μ F
RS-4805SZ	(H2)	(H3)		5 VDC	400 mA	80 %	1000 μ F
RS-4809SZ	(H2)	(H3)		9 VDC	222 mA	80 %	470 μ F
RS-4812SZ	(H2)	(H3)		12 VDC	166 mA	83 %	220 μ F
RS-4815SZ	(H2)	(H3)		15 VDC	134 mA	84 %	100 μ F
RS-483.3DZ	(H2)	(H3)		±3.3 VDC	±250 mA	73 %	±470 μ F
RS-4805DZ	(H2)	(H3)		±5 VDC	±200 mA	77 %	±470 μ F
RS-4809DZ	(H2)	(H3)		±9 VDC	±111 mA	80 %	±220 μ F
RS-4812DZ	(H2)	(H3)		±12 VDC	±83 mA	81 %	±100 μ F
RS-4815DZ	(H2)	(H3)		±15 VDC	±67 mA	83 %	±47 μ F

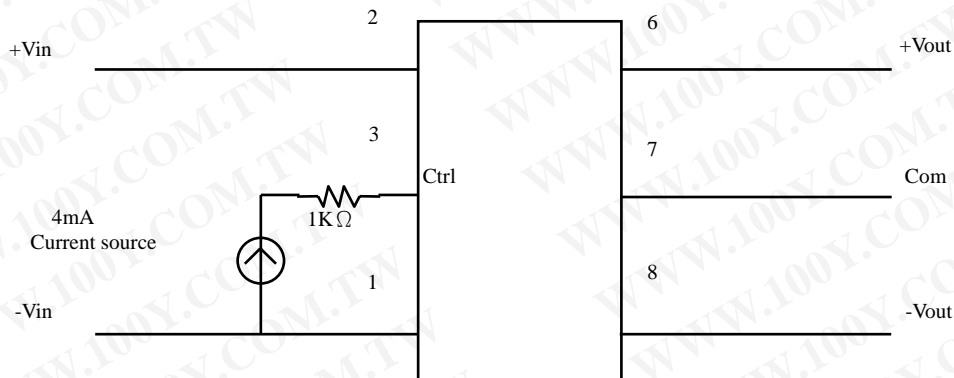
★ measured at $T_A = 25^\circ\text{C}$, at nominal input voltage and rated output current unless otherwise specified

Electrical Specifications

Input Voltage Range	4:1
Output Accuracy	±2% typ
Rated Power	1~2W
Isolation Voltage(H1)	1K VDC.min 1sec
Isolation Voltage(H2)	2K VDC.min 1sec
Isolation Voltage(H3)	3K VDC.min 1sec
Isolation capacitance(at 100KHz)	30PF max
Isolation capacitance(at 100KHz and Isolation H1)	200PF max
Isolation resistance	1G ohms min
Ripple & Noise (B/W = 20MHz)	50mVp-p max
Line Regulation (Input Voltage high to Low at full load)	±0.5% max
Load Regulation (20% to 100% Load at normal V_{in})	±0.5% typ
Switching Frequency (at full load)	100 to 300KHz(PFM)
Short Circuit Protection	Continuous automatics recovery
Operating Temperature Range (1~2W)	-40 $^\circ\text{C}$ to +85 $^\circ\text{C}$ (see graph)
Storage Temperature Range	-55 $^\circ\text{C}$ to +125 $^\circ\text{C}$
Efficiency	Up to 84%
Weight	4.7g typ



Application circuit



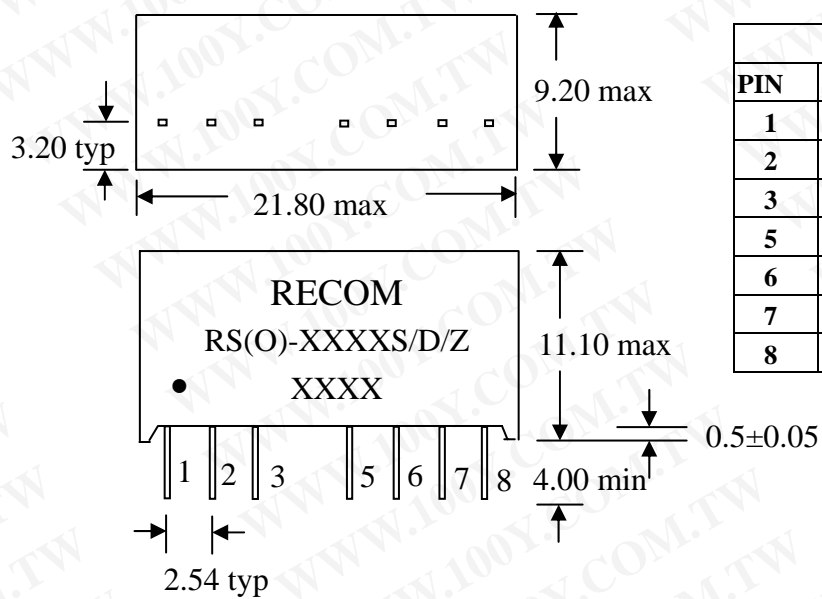
Remote ON/OFF ON : open or high impedance.

OFF: 3---6mA input current applied Via 1K Ω resistor

(OFF stand by current 10mA max)

勝特力材料 886-3-5753170
 勝特力电子(上海) 86-21-34970699
 勝特力电子(深圳) 86-755-83298787
[Http://www.100y.com.tw](http://www.100y.com.tw)

Outline Dimensions : mm



PIN CONNECTIONS		
PIN	SINGLE OUTPUT	DUAL OUTPUT
1	-INPUT	-INPUT
2	+INPUT	+INPUT
3	CTRL	CTRL
5	NC	NC
6	+OUTPUT	+OUTPUT
7	GND	COM
8	NC	-OUTPUT

Pin diameter : 0.5 × 0.25

Tolerances : ± 0.25

勝特力材料 886-3-5753170
 勝特力电子(上海) 86-21-34970699
 勝特力电子(深圳) 86-755-83298787
[Http://www.100y.com.tw](http://www.100y.com.tw)