



■ Features :

- 2"x2" compact size
- 2:1 wide input range
- High efficiency up to 93%
- 1500VDC I/O isolation
- Built-in remote ON / OFF control
- Built-in remote sense
- Trimming output $\pm 10\%$
- Comply with CE / FCC without external components
- Protections: Short circuit / Overload / Input and output Over voltage
- Cooling by free air convection
- Six-sided shield metal case
- 100% burn-in test
- Low cost / High reliability
- Output 3.3V available
- 2 years warranty

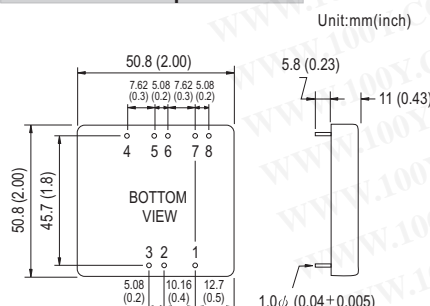
勝特力材料 886-3-5753170
 勝特力电子(上海) 86-21-34970699
 勝特力电子(深圳) 86-755-83298787
[Http://www.100y.com.tw](http://www.100y.com.tw)



SPECIFICATION

ORDER NO.	SKA60A-05	SKA60B-05	SKA60C-05	SKA60A-12	SKA60B-12	SKA60C-12	SKA60A-15	SKA60B-15	SKA60C-15	
OUTPUT	DC VOLTAGE			12V			15V			
	CURRENT RANGE			0.5 ~ 5A			0.4 ~ 4A			
	RATED POWER			60W			60W			
	RIPPLE & NOISE (max.) Note.2			60mVp-p			80mVp-p			
	LINE REGULATION Note.3			$\pm 0.5\%$			$\pm 0.5\%$			
	LOAD REGULATION Note.4			$\pm 0.5\%$			$\pm 0.5\%$			
	VOLTAGE ACCURACY			$\pm 2.0\%$			$\pm 2.0\%$			
	SWITCHING FREQUENCY			250KHz min.			250KHz min.			
INPUT	EXTERNAL CAPACITANCE LOAD (max.)			1000uF			220uF			
	EXTERNAL TRIM Adj. RANGE(Typ.)			$\pm 10\%$			$\pm 10\%$			
	VOLTAGE RANGE			A: 9 ~ 18VDC B: 18 ~ 36VDC C: 36 ~ 75VDC			A: 9 ~ 18VDC B: 18 ~ 36VDC C: 36 ~ 75VDC			
	EFFICIENCY (Typ.)			91%	90.5%	92%	92%	92.5%	92%	93%
	DC CURRENT			Full load	5505mA	2775mA	1370mA	5445mA	2715mA	1370mA
				No load	185mA	120mA	60mA	160mA	120mA	60mA
	FILTER			Pi network			Pi network			
	REMOTE CONTROL			Power ON : R.C ~ -Vin > 2.5VDC or open circuit ; Power OFF : R.C ~ -Vin < 0.5VDC or short			Power ON : R.C ~ -Vin > 2.5VDC or open circuit ; Power OFF : R.C ~ -Vin < 0.5VDC or short			
PROTECTION (Note. 5)	OVER CURRENT			110% ~ 160% rated output power			110% ~ 160% rated output power			
	SHORT CIRCUIT			All output equipped with short circuit			All output equipped with short circuit			
	OVER VOLTAGE			Input(Typ.): A: >20 ~ 25VDC B: >40 ~ 50VDC C: >80 ~ 100VDC input voltage Protection type : Shut down o/p voltage, recovers automatically after fault condition is removed			Input(Typ.): A: >20 ~ 25VDC B: >40 ~ 50VDC C: >80 ~ 100VDC input voltage Protection type : Shut down o/p voltage, recovers automatically after fault condition is removed			
ENVIRONMENT	WORKING TEMP.			-40 ~ +70°C (Refer to "Derating Curve")			-40 ~ +70°C (Refer to "Derating Curve")			
	CASE TEMP.			+100°C max.			+100°C max.			
	WORKING HUMIDITY			20% ~ 90% RH non-condensing			20% ~ 90% RH non-condensing			
	STORAGE TEMP., HUMIDITY			-55 ~ +105°C, 10 ~ 95% RH			-55 ~ +105°C, 10 ~ 95% RH			
	TEMP. COEFFICIENT			$\pm 0.03\% / ^\circ\text{C}$ (0 ~ 50°C)			$\pm 0.03\% / ^\circ\text{C}$ (0 ~ 50°C)			
SAFETY & EMC	VIBRATION			10 ~ 500Hz, 2G 10min./1cycle, period for 60min. each along X, Y, Z axes			10 ~ 500Hz, 2G 10min./1cycle, period for 60min. each along X, Y, Z axes			
	WITHSTAND VOLTAGE			I/P-O/P: 1.5KVDC			I/P-O/P: 1.5KVDC			
	ISOLATION RESISTANCE			I/P-O/P: 100M Ohms / 500VDC / 25°C / 70% RH			I/P-O/P: 100M Ohms / 500VDC / 25°C / 70% RH			
OTHERS	EMC EMISSION			Compliance to EN55022 Class A, FCC part 15 Class A without external components			Compliance to EN55022 Class A, FCC part 15 Class A without external components			
	EMC IMMUNITY			Compliance to EN61000-4-2,3,4,5,6,8, light industry level, criteria A			Compliance to EN61000-4-2,3,4,5,6,8, light industry level, criteria A			
DIMENSION			50.8*50.8*11.0 mm or 2"*2"*0.43" inch (L*W*H)			50.8*50.8*11.0 mm or 2"*2"*0.43" inch (L*W*H)				
WEIGHT			67g			67g				

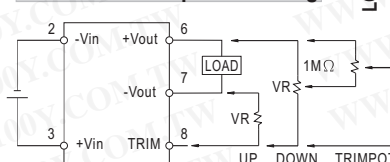
■ Mechanical Specification



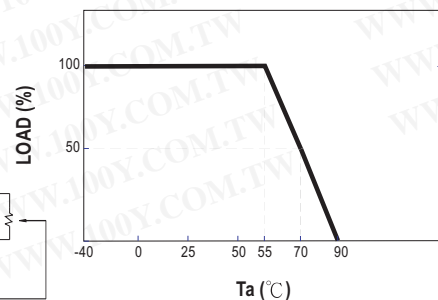
■ Pin Configuration

Pin No.	Output	Pin No.	Output
1	R.C	5	+R.S
2	-Vin	6	+Vout
3	+Vin	7	-Vout
4	-R.S	8	TRIM

■ External Output Trimming



■ Derating Curve



NOTE

1. All parameters are specified at normal input, rated load, 25°C 70% RH ambient.
2. Ripple & noise are measured at 20MHz by using a 12" twisted pair terminated with a 0.1uF & 47uF capacitor.
3. Line regulation is measured from low line to high line at rated load.
4. Load regulation is measured from 10% to 100% rated load.
5. Please prevent the converter from operating in overload or short circuit condition for more than 30 seconds.