



■ Features :

- Suitable for redundant operation of 24V system
- Installed on DIN Rail TS35 / 7.5 or 15
- Relay contact signal output and LED indicator for input failure alarm
- Cooling by free air convection
- 3 years warranty

勝特力材料 886-3-5753170  
 勝特力电子(上海) 86-21-34970699  
 勝特力电子(深圳) 86-755-83298787  
[Http://www.100y.com.tw](http://www.100y.com.tw)



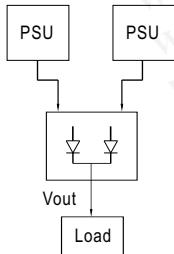
**SPECIFICATION**

<b>MODEL</b>	<b>DR-RDN20</b>	
<b>OUTPUT</b>	<b>REVERSE VOLTAGE (max.)</b>	30V
	<b>OUTPUT CURRENT (max.)</b>	20A
	<b>VOLTAGE DROP</b>	0.5V
	<b>LED INDICATORS</b>	Two green LEDs indicating each input is "OK or fail"
<b>INPUT</b>	<b>INPUT VOLTAGE RANGE</b>	21 ~ 28V
	<b>NUMBER OF INPUTS</b>	Two
	<b>INPUT CURRENT (max.)</b>	20A per input
<b>FUNCTION</b>	<b>INPUT VOLTAGE ALARM</b>	When input is > 20V(±5%) or < 30V(±5%) relay contacts
	<b>RELAY CONTACT RATING (max.)</b>	30VDC, 1A
<b>ENVIRONMENT</b>	<b>WORKING TEMP.</b>	-20 ~ +70°C
	<b>WORKING HUMIDITY</b>	20 ~ 90% RH non condensing
	<b>STORAGE TEMP., HUMIDITY</b>	-40 ~ +85°C, 10 ~ 95% RH
	<b>VIBRATION</b>	10 ~ 500Hz, 2G 10min./1cycle, Period for 60min.each along X, Y, Z axes ; Mouning: Compliance to IEC60068-2-6
<b>SAFETY &amp; EMC</b>	<b>WITHSTAND VOLTAGE</b>	Terminal-Chassis :0.5KVAC, Relay Contacts-Terminal :0.5KVAC
	<b>ISOLATION RESISTANCE</b>	Terminal-Chassis :>100M Ohms/500VDC 25°C 70%RH
	<b>EMI CONDUCTION &amp; RADIATION</b>	Compliance to EN55022 (CISPR22) Class B
	<b>EMS IMMUNITY</b>	Compliance to EN61000-4-2,3,4,5,6,8, ENV50204, Heavy industry level, criteria A
<b>OTHERS</b>	<b>MTBF</b>	996.8Khrs min. MIL-HDBK-217F (25°C)
	<b>DIMENSION</b>	55.5*125.2*100mm (W*H*D)
	<b>PACKING</b>	0.5Kg; 20pcs/11Kg/1.1CUFT
<b>NOTE</b>	1. All parameters NOT specially mentioned are measured at 24VDC input, rated load and 25°C of ambient temperature.	

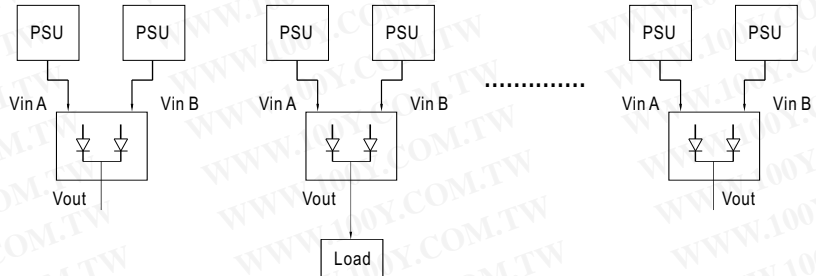
■ Typical Application Notes

1. 1+1 Redundancy

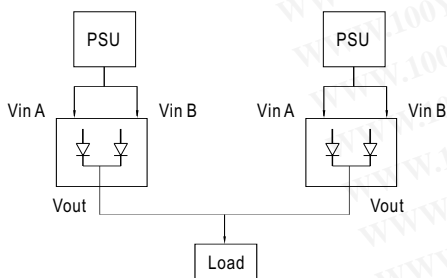
Using 1 more PSU as the redundant unit



2. 1+N Redundancy: Using more PSUs as the redundant units to increase the reliability



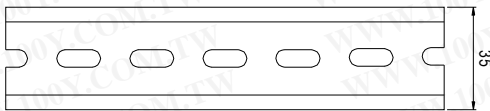
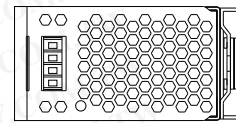
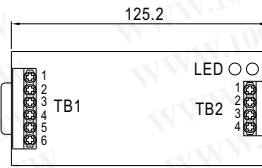
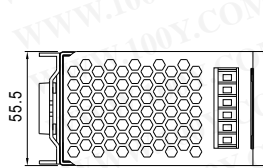
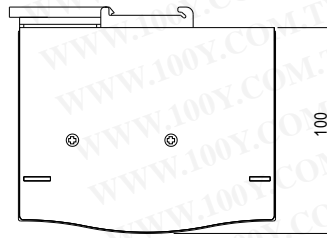
3. Single Use: Connecting only one PSU to one DR-RDN20 to reduce the stress of the diodes and hence increase the reliability



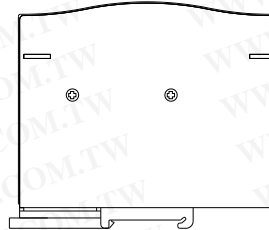
### Mechanical Specification

Case No.923C Unit:mm

勝特力材料 886-3-5753170  
 勝特力电子(上海) 86-21-34970699  
 勝特力电子(深圳) 86-755-83298787  
[Http://www.100y.com.tw](http://www.100y.com.tw)



ADMISSIBLE DIN-RAIL:TS35/7.5 OR TS35/15



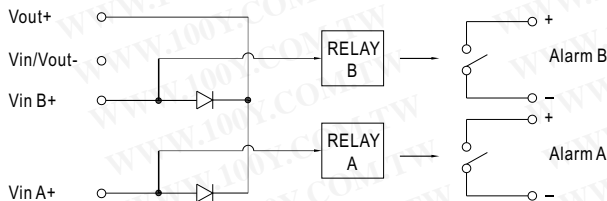
Terminal Pin. No Assignment (TB1)

Pin No.	Assignment
1	Vout+
2	Vout-
3,4	Vin-
5	Vin B+
6	Vin A+

Terminal Pin. No Assignment (TB2)

Pin No.	Assignment
1	Alarm B1
2	Alarm B2
3	Alarm A1
4	Alarm A2

### Block Diagram



### Derating Curve

