

>> 發光體的效果圖 Luminous Effect



>> 顏色外殼效果圖 Color Shell Effect Chart



## >> 型號說明 Metal Push Button Switch

**頭部釋義 Head Type** F/平面 T/斜面 C/凹凸 H/高頭 B/球面 E/環形燈 D/中心燈  
F/Flat T/Inclined C/Concave H/High B/Ball E/Ring lamp D/Center lamp

**燈珠顏色 LED Color** R G Y O B W

**帶燈電壓 LED Voltage** 3V/6V/12V/24V/  
36V/48V/110V/  
220V

**外殼材料 Material** N/黃銅鍍鉻 A/鋅合金鍍鉻 S/不銹鋼  
N/Chromium plated brass A/Zinc alloy plated chromium S/Stainless steel

**接線方式 Mode of connection** J/焊接式(1NO) 10/接線柱(1NO) 11/單刀(1NO,1NC) 22/雙刀(2NO,2NC)  
J/Pin terminal(1NO) 10/Wiring terminal(1NO) 11/Single pole(1NO,1NC) 22/Double knife(2NO,2NC)

## >> 相關認證 Related certification

符合IEC60947-5-1 GB14048.5標準  
Conform to IEC60947-5-1 GB14048.5 Standard



## >> 燈珠規格 Lamp Ratings

燈珠類型 Lamp Type	雙向LED燈珠(交直流通用) LED lamp(AC/DC)	燈珠等效電路	 <p>采用交直流通用的LED燈珠，接線端子無正負極區分；燈珠內置保護電阻，不需外接。 Using AC/DC LED lamp, the terminals have no difference of anode and cathode; Using inner resistance, do not need connect outer resistance. MP16 haven't inner resistance, need connect outer resistance.</p>
額定電壓 Rated Voltage	AC/DC6V AC/DC12V AC/DC6V V AC/DC12V	Lamp Circuit diagram	
額定電流 Rated Current	約15mA About 15mA		
發光顏色 LED Color	R G Y O B W		
壽命 Life	4000小時(參考值) 40000 hours(Reference)		

注：如需單向直流LED燈珠可定做；其他電壓規格可按需求定做。  
DC LED and other voltage can be made to order.

## >> 技術規格 TECHNICAL SPECIFICATIONS

燈光電壓 LED Voltage	工作電壓 Operating Voltage Vop (最小到最大 Min to Max)	操作電流 Operating Current Iop (典型的所有類型 Typical All Typs)
2VDC(無電阻 No Resistor)	1.8~2.5VDC	20mA
12VDC	10.8~13.2VDC	20mA
24VDC	21.6~26.4VDC	20mA
28VDC	25.2~30.8VDC	20mA
110VAC	99~121VDC	6mA
230VAC	207~253VDC	3mA

燈光顏色 Intensity (Typical) at Iop Standard	發光強度 Prominent (所有電壓 all voltages)	發光強度 Flush (所有電壓 all voltages)
HE 紅色 Red	7,500mcd	2000mcd
綠色 Green	4,100mcd	250mcd
黃色 Yellow	2,500mcd	350mcd
藍 Blue	1,300mcd	300mcd
白色 White	1,900mcd	200mcd

發光強度會降低工作電流。  
Luminous intensity will be reduced with lower operating current.

最大電壓 Max Reverse Voltage: 5V

觀察角度 Viewing Angle: 100° (輔助模式 dependant on mode)

平均壽命 Life Expectancy: 50, 000 hours

工作溫度範圍 Operating Temperature Range: -40~+85°C

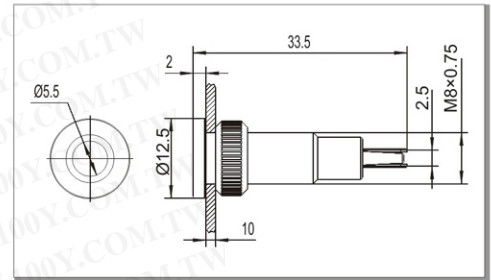
## >> 發光效果圖 Luminescent effect chart



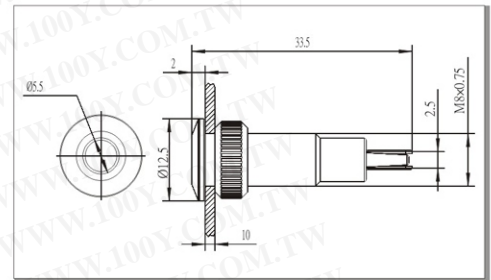
## >> Φ8金屬信號燈 Metal Signal Lamp



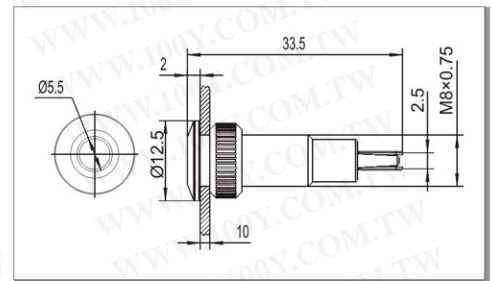
安裝尺寸Diameter: Φ8mm  
燈珠類型Type: LED  
燈珠顏色Color: **R** **G** **Y** **O** **B** **W**  
電壓等級Voltage Rating: ≤220V  
額定電流  
Rated Current: 約15mA About 15mA  
外殼材料  
The Crust Material: 黃銅鍍鎳 Copper plating  
防護等級IP Degree: IP67, IK10



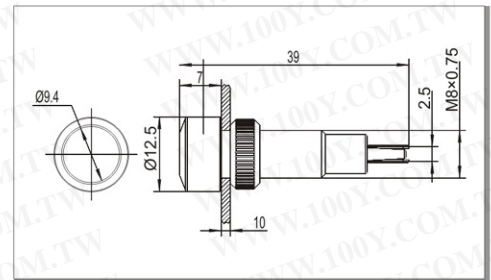
安裝尺寸Diameter: Φ8mm  
燈珠類型Type: LED  
燈珠顏色Color: **R** **G** **Y** **O** **B** **W**  
電壓等級Voltage Rating: ≤220V  
額定電流  
Rated Current: 約15mA About 15mA  
外殼材料  
The Crust Material: 黃銅鍍鎳 Copper plating  
防護等級IP Degree: IP67, IK10



安裝尺寸Diameter: Φ8mm  
燈珠類型Type: LED  
燈珠顏色Color: **R** **G** **Y** **O** **B** **W**  
電壓等級Voltage Rating: ≤220V  
額定電流  
Rated Current: 約15mA About 15mA  
外殼材料  
The Crust Material: 黃銅鍍鎳 Copper plating  
防護等級IP Degree: IP67, IK10



安裝尺寸Diameter: Φ8mm  
燈珠類型Type: LED  
燈珠顏色Color: **R** **G** **Y** **O** **B** **W**  
電壓等級Voltage Rating: ≤220V  
額定電流  
Rated Current: 約15mA About 15mA  
外殼材料  
The Crust Material: 黃銅鍍鎳 Copper plating  
防護等級IP Degree: IP67, IK10

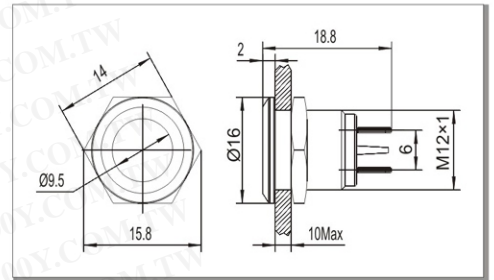


產品規格	Specification	MQ08F-Δ▲	MQ08T-Δ▲	MQ08C-Δ▲	MQ08H-Δ▲	
尾部配置	Terminal Type	接线插片Pin Terminal(1.8×0.4mm)	接线插片Pin Terminal(1.8×0.4mm)	接线插片Pin Terminal(1.8×0.4mm)	接线插片Pin Terminal(1.8×0.4mm)	
絕緣強度	Dielectric Intensity	1100VAC	1100VAC	1100VAC	1100VAC	
環境溫度	Operating Temp	-20°C~+55°C	-20°C~+55°C	-20°C~+55°C	-20°C~+55°C	
面板厚度	Panel Thickness	1~10mm	1~10mm	1~10mm	1~10mm	
螺母扭矩	Torque	5~14Nm	5~14Nm	5~14Nm	5~14Nm	
防護等級	IP Degree	IP67, IK10	IP67, IK10	IP67, IK10	IP67, IK10	
材料	燈罩	聚碳酸酯PC	聚碳酸酯PC	聚碳酸酯PC	聚碳酸酯PC	
	外殼	黃銅鍍鎳 Copper plating	黃銅鍍鎳 Copper plating	黃銅鍍鎳 Copper plating	黃銅鍍鎳 Copper plating	
	底座	PBT	PBT	PBT	PBT	
燈珠參數	RoHS	可定制Made to order	可定制Made to order	可定制Made to order	可定制Made to order	
	燈珠類型	Type	LED	LED	LED	
	額定電壓	Rated Voltage	3V/6V/12V/24V/36V/48V/110V/220V	3V/6V/12V/24V/36V/48V/110V/220V	3V/6V/12V/24V/36V/48V/110V/220V	3V/6V/12V/24V/36V/48V/110V/220V
	額定電流	Rated Current	約20mA	約20mA	約20mA	約20mA
	燈珠顏色	Color	<b>R</b> <b>G</b> <b>Y</b> <b>O</b> <b>B</b> <b>W</b>	<b>R</b> <b>G</b> <b>Y</b> <b>O</b> <b>B</b> <b>W</b>	<b>R</b> <b>G</b> <b>Y</b> <b>O</b> <b>B</b> <b>W</b>	<b>R</b> <b>G</b> <b>Y</b> <b>O</b> <b>B</b> <b>W</b>
燈珠壽命	Life	40000小时hours	40000小时hours	40000小时hours	40000小时hours	

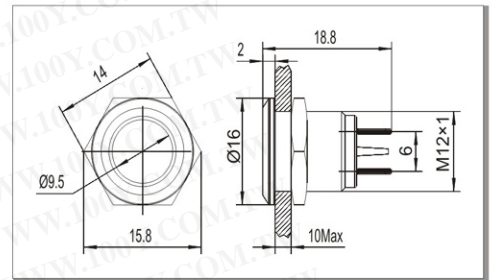
## >> Φ12金屬信號燈 Metal Signal Lamp



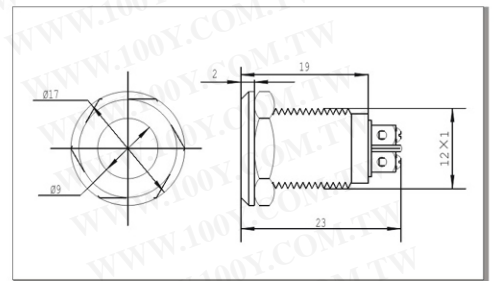
安裝尺寸Diameter: Φ12mm  
燈珠類型Type: LED  
燈珠顏色Color: **R G Y O B W**  
電壓等級Voltage Rating: ≤220V  
額定電流  
Rated Current: 約15mA About 15mA  
外殼材料  
The Crust Material: 黃銅鍍鎳 Copper plating  
防護等級IP Degree: IP67, IK10



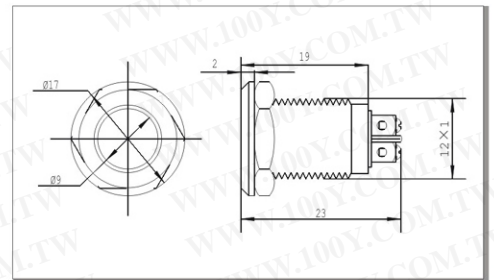
安裝尺寸Diameter: Φ12mm  
燈珠類型Type: LED  
燈珠顏色Color: **R G Y O B W**  
電壓等級Voltage Rating: ≤220V  
額定電流  
Rated Current: 約15mA About 15mA  
外殼材料  
The Crust Material: 黃銅鍍鎳 Copper plating  
防護等級IP Degree: IP67, IK10



安裝尺寸Diameter: Φ12mm  
燈珠類型Type: LED  
燈珠顏色Color: **R G Y O B W**  
電壓等級Voltage Rating: ≤220V  
額定電流  
Rated Current: 約15mA About 15mA  
外殼材料  
The Crust Material: 黃銅鍍鎳 Copper plating  
防護等級IP Degree: IP67, IK10



安裝尺寸Diameter: Φ12mm  
燈珠類型Type: LED  
燈珠顏色Color: **R G Y O B W**  
電壓等級Voltage Rating: ≤220V  
額定電流  
Rated Current: 約15mA About 15mA  
外殼材料  
The Crust Material: 黃銅鍍鎳 Copper plating  
防護等級IP Degree: IP67, IK10

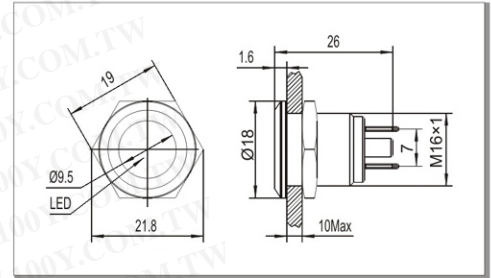


產品規格	Specification	MQ12F-Δ▲J	MQ12C-Δ▲J	MQ12F-Δ▲10	MQ12C-Δ▲10
尾部配置	Terminal Type	接線插片Pin Terminal(1.8×0.4mm)	接線插片Pin Terminal(1.8×0.4mm)	接線柱Wiring terminal	接線柱Wiring terminal
絕緣強度	Dielectric Intensity	1100VAC	1100VAC	1100VAC	1100VAC
環境溫度	Operating Temp	-20°C~+55°C	-20°C~+55°C	-20°C~+55°C	-20°C~+55°C
面板厚度	Panel Thickness	1~10mm	1~10mm	1~10mm	1~10mm
螺母扭矩	Torque	5~14Nm	5~14Nm	5~14Nm	5~14Nm
防護等級	IP Degree	IP67, IK10	IP67, IK10	IP67, IK10	IP67, IK10
Material	燈罩	聚碳酸酯PC	聚碳酸酯PC	聚碳酸酯PC	聚碳酸酯PC
	外殼	黃銅鍍鎳 Copper plating	黃銅鍍鎳 Copper plating	黃銅鍍鎳 Copper plating	黃銅鍍鎳 Copper plating
	底座	PBT	PBT	PBT	PBT
	RoHS	可定制Made to order	可定制Made to order	可定制Made to order	可定制Made to order
LED Spec	燈珠類型	LED	LED	LED	LED
	額定電壓	3V/6V/12V/24V/36V/48V/110V/220V	3V/6V/12V/24V/36V/48V/110V/220V	3V/6V/12V/24V/36V/48V/110V/220V	3V/6V/12V/24V/36V/48V/110V/220V
	額定電流	約20mA	約20mA	約20mA	約20mA
	燈珠顏色	<b>R G Y O B W</b>	<b>R G Y O B W</b>	<b>R G Y O B W</b>	<b>R G Y O B W</b>
燈珠壽命	40000小时hours	40000小时hours	40000小时hours	40000小时hours	

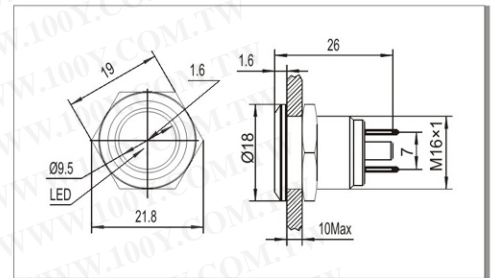
## >> Φ16金屬信號燈 Metal Signal Lamp



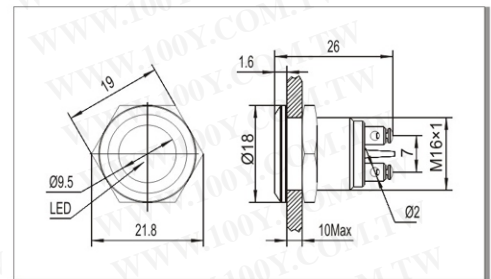
安裝尺寸Diameter: Φ16mm  
燈珠類型Type: LED  
燈珠顏色Color: **R G Y O B W**  
電壓等級Voltage Rating: ≤220V  
額定電流  
Rated Current: 約15mA About 15mA  
外殼材料  
The Crust Material: 黃銅鍍鎳 Copper plating  
防護等級IP Degree: IP67, IK10



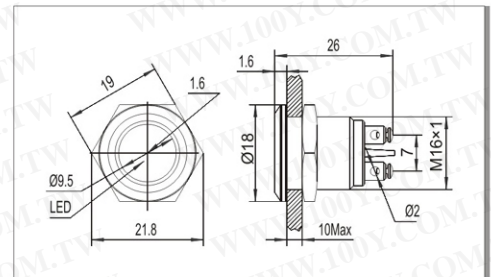
安裝尺寸Diameter: Φ16mm  
燈珠類型Type: LED  
燈珠顏色Color: **R G Y O B W**  
電壓等級Voltage Rating: ≤220V  
額定電流  
Rated Current: 約15mA About 15mA  
外殼材料  
The Crust Material: 黃銅鍍鎳 Copper plating  
防護等級IP Degree: IP67, IK10



安裝尺寸Diameter: Φ16mm  
燈珠類型Type: LED  
燈珠顏色Color: **R G Y O B W**  
電壓等級Voltage Rating: ≤220V  
額定電流  
Rated Current: 約15mA About 15mA  
外殼材料  
The Crust Material: 黃銅鍍鎳 Copper plating  
防護等級IP Degree: IP67, IK10



安裝尺寸Diameter: Φ16mm  
燈珠類型Type: LED  
燈珠顏色Color: **R G Y O B W**  
電壓等級Voltage Rating: ≤220V  
額定電流  
Rated Current: 約15mA About 15mA  
外殼材料  
The Crust Material: 黃銅鍍鎳 Copper plating  
防護等級IP Degree: IP67, IK10

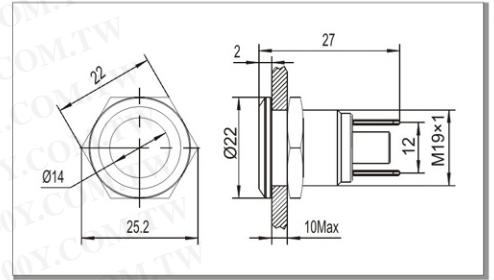


產品規格	Specification	MQ16F-Δ▲J	MQ16C-Δ▲J	MQ16F-Δ▲10	MQ16C-Δ▲10	
尾部配置	Terminal Type	接线插片Pin Terminal(1.8×0.4mm)	接线插片Pin Terminal(1.8×0.4mm)	接线柱Wiring terminal	接线柱Wiring terminal	
絕緣強度	Dielectric Intensity	1100VAC	1100VAC	1100VAC	1100VAC	
環境溫度	Operating Temp	-20°C~+55°C	-20°C~+55°C	-20°C~+55°C	-20°C~+55°C	
面板厚度	Panel Thickness	1~10mm	1~10mm	1~10mm	1~10mm	
螺母扭矩	Torque	5~14Nm	5~14Nm	5~14Nm	5~14Nm	
防護等級	IP Degree	IP67,IK10	IP67,IK10	IP67,IK10	IP67,IK10	
材料	燈罩	聚碳酸酯PC	聚碳酸酯PC	聚碳酸酯PC	聚碳酸酯PC	
	外殼	黃銅鍍鎳 Copper plating	黃銅鍍鎳 Copper plating	黃銅鍍鎳 Copper plating	黃銅鍍鎳 Copper plating	
	底座	PBT	PBT	PBT	PBT	
燈珠參數	RoHS	可定制Made to order	可定制Made to order	可定制Made to order	可定制Made to order	
	燈珠類型	Type	LED	LED	LED	
	額定電壓	Rated Voltage	3V/6V/12V/24V/36V/48V/110V/220V	3V/6V/12V/24V/36V/48V/110V/220V	3V/6V/12V/24V/36V/48V/110V/220V	3V/6V/12V/24V/36V/48V/110V/220V
	額定電流	Rated Current	約20mA	約20mA	約20mA	約20mA
	燈珠顏色	Color	<b>R G Y O B W</b>	<b>R G Y O B W</b>	<b>R G Y O B W</b>	<b>R G Y O B W</b>
燈珠壽命	Life	40000小时hours	40000小时hours	40000小时hours	40000小时hours	

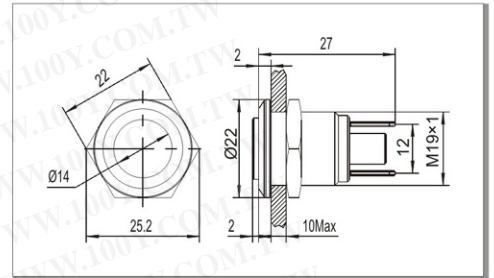
## Φ19金屬信號燈 Metal Signal Lamp



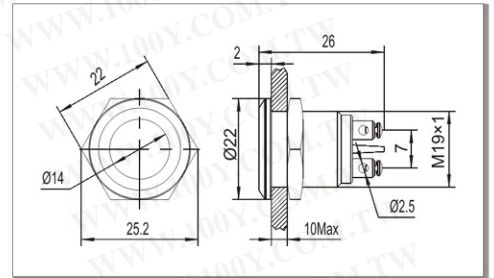
安裝尺寸Diameter: Φ19mm  
燈珠類型Type: LED  
燈珠顏色Color: **R G Y O B W**  
電壓等級Voltage Rating: ≤220V  
額定電流  
Rated Current: 約15mA About 15mA  
外殼材料  
The Crust Material: 不銹鋼Stainless steel  
防護等級IP Degree: IP67, IK10



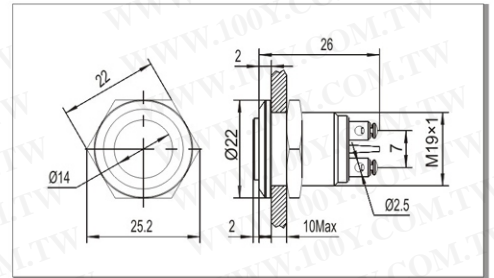
安裝尺寸Diameter: Φ19mm  
燈珠類型Type: LED  
燈珠顏色Color: **R G Y O B W**  
電壓等級Voltage Rating: ≤220V  
額定電流  
Rated Current: 約15mA About 15mA  
外殼材料  
The Crust Material: 不銹鋼Stainless steel  
防護等級IP Degree: IP67, IK10



安裝尺寸Diameter: Φ19mm  
燈珠類型Type: LED  
燈珠顏色Color: **R G Y O B W**  
電壓等級Voltage Rating: ≤220V  
額定電流  
Rated Current: 約15mA About 15mA  
外殼材料  
The Crust Material: 不銹鋼Stainless steel  
防護等級IP Degree: IP67, IK10



安裝尺寸Diameter: Φ19mm  
燈珠類型Type: LED  
燈珠顏色Color: **R G Y O B W**  
電壓等級Voltage Rating: ≤220V  
額定電流  
Rated Current: 約15mA About 15mA  
外殼材料  
The Crust Material: 不銹鋼Stainless steel  
防護等級IP Degree: IP67, IK10

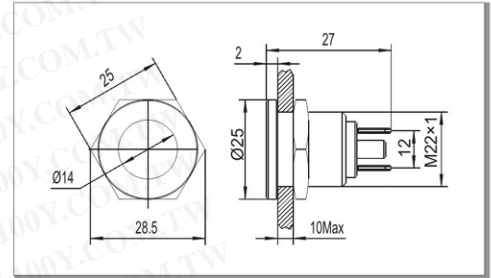


產品規格	Specification	MQ19F-Δ▲J	MQ19H-Δ▲J	MQ19F-Δ▲10	MQ19H-Δ▲10	
尾部配置	Terminal Type	接線插片Pin Terminal(1.8×0.4mm)	接線插片Pin Terminal(1.8×0.4mm)	接線柱Wiring terminal	接線柱Wiring terminal	
絕緣強度	Dielectric Intensity	1100VAC	1100VAC	1100VAC	1100VAC	
環境溫度	Operating Temp	-20°C~+55°C	-20°C~+55°C	-20°C~+55°C	-20°C~+55°C	
面板厚度	Panel Thickness	1~10mm	1~10mm	1~10mm	1~10mm	
螺母扭矩	Torque	5~14Nm	5~14Nm	5~14Nm	5~14Nm	
防護等級	IP Degree	IP67, IK10	IP67, IK10	IP67, IK10	IP67, IK10	
Material	燈罩	聚碳酸酯PC	聚碳酸酯PC	聚碳酸酯PC	聚碳酸酯PC	
	外殼	不銹鋼Stainless steel	不銹鋼Stainless steel	不銹鋼Stainless steel	不銹鋼Stainless steel	
	底座	PBT	PBT	PBT	PBT	
RoHS	RoHS	可定制Made to order	可定制Made to order	可定制Made to order	可定制Made to order	
LED Spec	燈珠類型	Type	LED	LED	LED	
	額定電壓	Rated Voltage	3V/6V/12V/24V/36V/48V/110V/220V	3V/6V/12V/24V/36V/48V/110V/220V	3V/6V/12V/24V/36V/48V/110V/220V	3V/6V/12V/24V/36V/48V/110V/220V
	額定電流	Rated Current	約20mA	約20mA	約20mA	約20mA
	燈珠顏色	Color	<b>R G Y O B W</b>	<b>R G Y O B W</b>	<b>R G Y O B W</b>	<b>R G Y O B W</b>
燈珠壽命	Life	40000小时hours	40000小时hours	40000小时hours	40000小时hours	

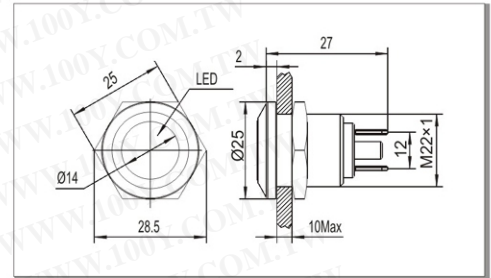
## >> Φ22金屬信號燈 Metal Signal Lamp



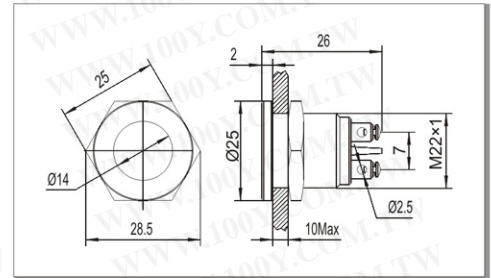
安裝尺寸Diameter: Φ22mm  
燈珠類型Type: LED  
燈珠顏色Color: **R G Y O B W**  
電壓等級Voltage Rating: ≤220V  
額定電流  
Rated Current: 約15mA About 15mA  
外殼材料  
The Crust Material: 不銹鋼Stainless steel  
防護等級IP Degree: IP67, IK10



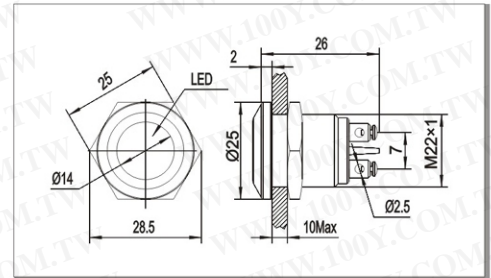
安裝尺寸Diameter: Φ22mm  
燈珠類型Type: LED  
燈珠顏色Color: **R G Y O B W**  
電壓等級Voltage Rating: ≤220V  
額定電流  
Rated Current: 約15mA About 15mA  
外殼材料  
The Crust Material: 不銹鋼Stainless steel  
防護等級IP Degree: IP67, IK10



安裝尺寸Diameter: Φ22mm  
燈珠類型Type: LED  
燈珠顏色Color: **R G Y O B W**  
電壓等級Voltage Rating: ≤220V  
額定電流  
Rated Current: 約15mA About 15mA  
外殼材料  
The Crust Material: 不銹鋼Stainless steel  
防護等級IP Degree: IP67, IK10



安裝尺寸Diameter: Φ22mm  
燈珠類型Type: LED  
燈珠顏色Color: **R G Y O B W**  
電壓等級Voltage Rating: ≤220V  
額定電流  
Rated Current: 約15mA About 15mA  
外殼材料  
The Crust Material: 不銹鋼Stainless steel  
防護等級IP Degree: IP67, IK10

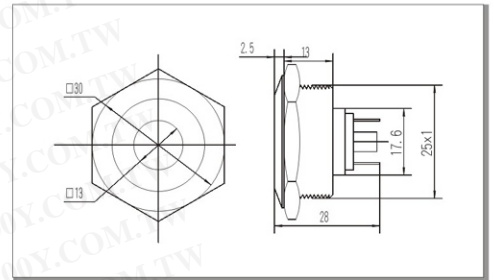


產品規格	Specification	MQ22F-Δ▲J	MQ22C-Δ▲J	MQ22F-Δ▲10	MQ22C-Δ▲10	
尾部配置	Terminal Type	接线插片Pin Terminal(1.8×0.4mm)	接线插片Pin Terminal(1.8×0.4mm)	接线柱Wiring terminal	接线柱Wiring terminal	
絕緣強度	Dielectric Intensity	1100VAC	1100VAC	1100VAC	1100VAC	
環境溫度	Operating Temp	-20°C~+55°C	-20°C~+55°C	-20°C~+55°C	-20°C~+55°C	
面板厚度	Panel Thickness	1~10mm	1~10mm	1~10mm	1~10mm	
螺母扭矩	Torque	5~14Nm	5~14Nm	5~14Nm	5~14Nm	
防護等級	IP Degree	IP67,IK10	IP67,IK10	IP67,IK10	IP67,IK10	
Material	燈罩	聚碳酸酯PC	聚碳酸酯PC	聚碳酸酯PC	聚碳酸酯PC	
	外殼	不銹鋼Stainless steel	不銹鋼Stainless steel	不銹鋼Stainless steel	不銹鋼Stainless steel	
	底座	PBT	PBT	PBT	PBT	
LED Spec.	RoHS	可定制Made to order	可定制Made to order	可定制Made to order	可定制Made to order	
	燈珠類型	Type	LED	LED	LED	
	額定電壓	Rated Voltage	3V/6V/12V/24V/36V/48V/110V/220V	3V/6V/12V/24V/36V/48V/110V/220V	3V/6V/12V/24V/36V/48V/110V/220V	3V/6V/12V/24V/36V/48V/110V/220V
	額定電流	Rated Current	約20mA	約20mA	約20mA	約20mA
	燈珠顏色	Color	<b>R G Y O B W</b>	<b>R G Y O B W</b>	<b>R G Y O B W</b>	<b>R G Y O B W</b>
燈珠壽命	Life	40000小时hours	40000小时hours	40000小时hours	40000小时hours	

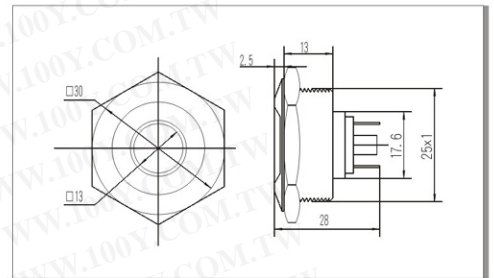
## >> Φ25金屬信號燈 Metal Signal Lamp



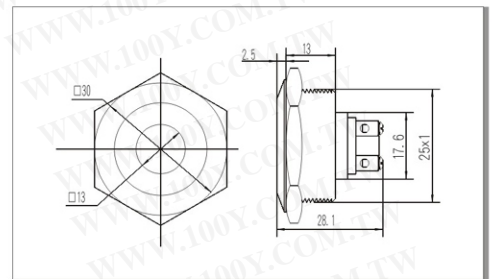
安裝尺寸Diameter: Φ25mm  
燈珠類型Type: LED  
燈珠顏色Color: **R G Y O B W**  
電壓等級Voltage Rating: ≤220V  
額定電流  
Rated Current: 約15mA About 15mA  
外殼材料  
The Crust Material: 不銹鋼Stainless steel  
防護等級IP Degree: IP67, IK10



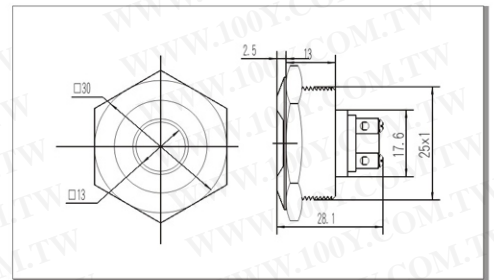
安裝尺寸Diameter: Φ25mm  
燈珠類型Type: LED  
燈珠顏色Color: **R G Y O B W**  
電壓等級Voltage Rating: ≤220V  
額定電流  
Rated Current: 約15mA About 15mA  
外殼材料  
The Crust Material: 不銹鋼Stainless steel  
防護等級IP Degree: IP67, IK10



安裝尺寸Diameter: Φ25mm  
燈珠類型Type: LED  
燈珠顏色Color: **R G Y O B W**  
電壓等級Voltage Rating: ≤220V  
額定電流  
Rated Current: 約15mA About 15mA  
外殼材料  
The Crust Material: 不銹鋼Stainless steel  
防護等級IP Degree: IP67, IK10



安裝尺寸Diameter: Φ25mm  
燈珠類型Type: LED  
燈珠顏色Color: **R G Y O B W**  
電壓等級Voltage Rating: ≤220V  
額定電流  
Rated Current: 約15mA About 15mA  
外殼材料  
The Crust Material: 不銹鋼Stainless steel  
防護等級IP Degree: IP67, IK10

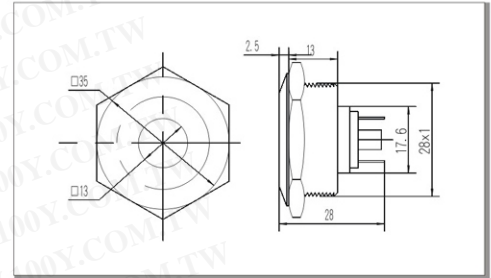


產品規格	Specification	MQ25F-Δ▲J	MQ25C-Δ▲J	MQ25F-Δ▲10	MQ25C-Δ▲10	
尾部配置	Terminal Type	接線插片Pin Terminal(1.8×0.4mm)	接線插片Pin Terminal(1.8×0.4mm)	接線柱Wiring terminal	接線柱Wiring terminal	
絕緣強度	Dielectric Intensity	1100VAC	1100VAC	1100VAC	1100VAC	
環境溫度	Operating Temp	-20°C~+55°C	-20°C~+55°C	-20°C~+55°C	-20°C~+55°C	
面板厚度	Panel Thickness	1~10mm	1~10mm	1~10mm	1~10mm	
螺母扭矩	Torque	5~14Nm	5~14Nm	5~14Nm	5~14Nm	
防護等級	IP Degree	IP67, IK10	IP67, IK10	IP67, IK10	IP67, IK10	
Material	燈罩	聚碳酸酯PC	聚碳酸酯PC	聚碳酸酯PC	聚碳酸酯PC	
	外殼	不銹鋼Stainless steel	不銹鋼Stainless steel	不銹鋼Stainless steel	不銹鋼Stainless steel	
	底座	PBT	PBT	PBT	PBT	
LED Spec	RoHS	可定制Made to order	可定制Made to order	可定制Made to order	可定制Made to order	
	燈珠類型	Type	LED	LED	LED	
	額定電壓	Rated Voltage	3V/6V/12V/24V/36V/48V/110V/220V	3V/6V/12V/24V/36V/48V/110V/220V	3V/6V/12V/24V/36V/48V/110V/220V	3V/6V/12V/24V/36V/48V/110V/220V
	額定電流	Rated Current	約20mA	約20mA	約20mA	約20mA
	燈珠顏色	Color	<b>R G Y O B W</b>	<b>R G Y O B W</b>	<b>R G Y O B W</b>	<b>R G Y O B W</b>
	燈珠壽命	Life	40000小时hours	40000小时hours	40000小时hours	40000小时hours

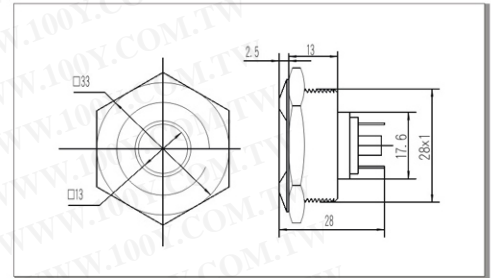
## >> Φ28金屬信號燈 Metal Signal Lamp



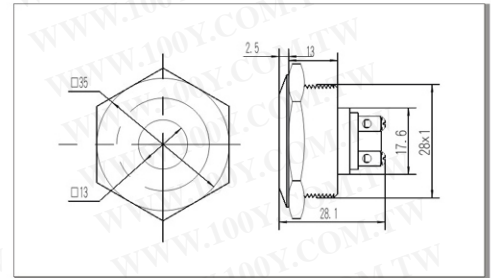
安裝尺寸Diameter: Φ28mm  
燈珠類型Type: LED  
燈珠顏色Color: **R G Y O B W**  
電壓等級Voltage Rating: ≤220V  
額定電流  
Rated Current: 約15mA About 15mA  
外殼材料  
The Crust Material: 不銹鋼Stainless steel  
防護等級IP Degree: IP67, IK10



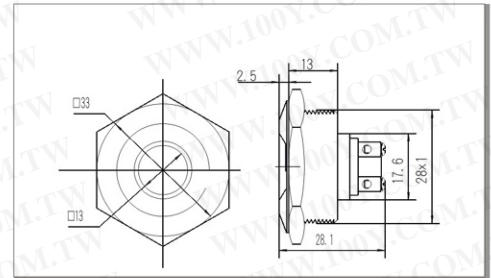
安裝尺寸Diameter: Φ28mm  
燈珠類型Type: LED  
燈珠顏色Color: **R G Y O B W**  
電壓等級Voltage Rating: ≤220V  
額定電流  
Rated Current: 約15mA About 15mA  
外殼材料  
The Crust Material: 不銹鋼Stainless steel  
防護等級IP Degree: IP67, IK10



安裝尺寸Diameter: Φ28mm  
燈珠類型Type: LED  
燈珠顏色Color: **R G Y O B W**  
電壓等級Voltage Rating: ≤220V  
額定電流  
Rated Current: 約15mA About 15mA  
外殼材料  
The Crust Material: 不銹鋼Stainless steel  
防護等級IP Degree: IP67, IK10



安裝尺寸Diameter: Φ28mm  
燈珠類型Type: LED  
燈珠顏色Color: **R G Y O B W**  
電壓等級Voltage Rating: ≤220V  
額定電流  
Rated Current: 約15mA About 15mA  
外殼材料  
The Crust Material: 不銹鋼Stainless steel  
防護等級IP Degree: IP67, IK10



產品規格	Specification	MQ28F-Δ▲J	MQ28C-Δ▲J	MQ28F-Δ▲10	MQ28C-Δ▲10	
尾部配置	Terminal Type	接线插片Pin Terminal(1.8×0.4mm)	接线插片Pin Terminal(1.8×0.4mm)	接线柱Wiring terminal	接线柱Wiring terminal	
絕緣強度	Dielectric Intensity	1100VAC	1100VAC	1100VAC	1100VAC	
環境溫度	Operating Temp	-20°C~+55°C	-20°C~+55°C	-20°C~+55°C	-20°C~+55°C	
面板厚度	Panel Thickness	1~10mm	1~10mm	1~10mm	1~10mm	
螺母扭矩	Torque	5~14Nm	5~14Nm	5~14Nm	5~14Nm	
防護等級	IP Degree	IP67,IK10	IP67,IK10	IP67,IK10	IP67,IK10	
Material	燈罩	聚碳酸酯PC	聚碳酸酯PC	聚碳酸酯PC	聚碳酸酯PC	
	外殼	不銹鋼Stainless steel	不銹鋼Stainless steel	不銹鋼Stainless steel	不銹鋼Stainless steel	
	底座	PBT	PBT	PBT	PBT	
LED Spec.	RoHS	可定制Made to order	可定制Made to order	可定制Made to order	可定制Made to order	
	燈珠類型	Type	LED	LED	LED	
	額定電壓	Rated Voltage	3V/6V/12V/24V/36V/48V/110V/220V	3V/6V/12V/24V/36V/48V/110V/220V	3V/6V/12V/24V/36V/48V/110V/220V	3V/6V/12V/24V/36V/48V/110V/220V
	額定電流	Rated Current	約20mA	約20mA	約20mA	約20mA
	燈珠顏色	Color	<b>R G Y O B W</b>	<b>R G Y O B W</b>	<b>R G Y O B W</b>	<b>R G Y O B W</b>
燈珠壽命	Life	40000小时hours	40000小时hours	40000小时hours	40000小时hours	



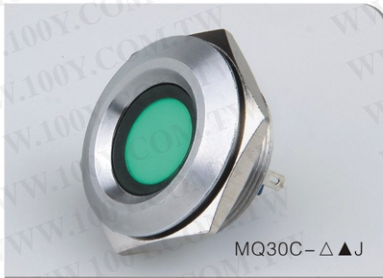
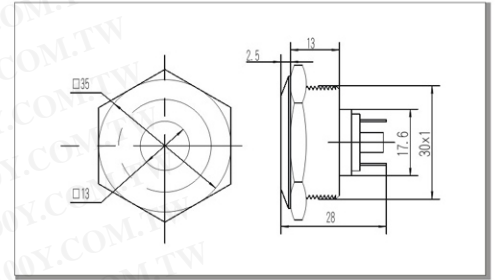
## MQ金屬信號燈系列 MQ Metal Signal Lamp Series



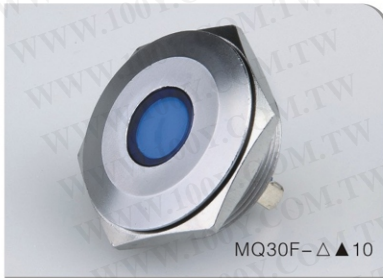
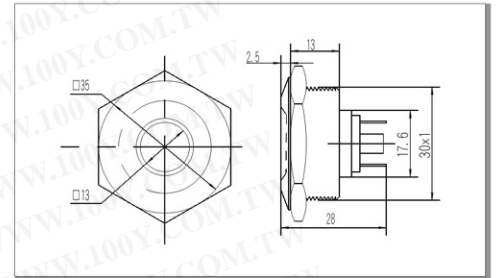
### >> Φ30金屬信號燈 Metal Signal Lamp



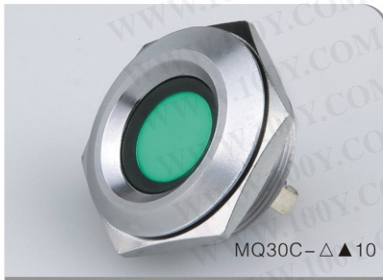
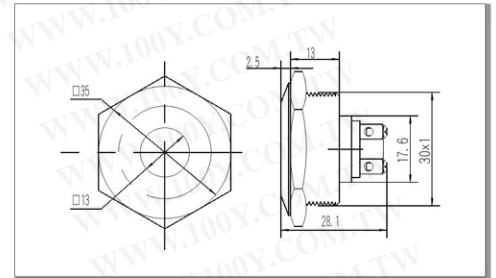
安裝尺寸Diameter: Φ30mm  
 燈珠類型Type: LED  
 燈珠顏色Color: **R G Y O B W**  
 電壓等級Voltage Rating: ≤220V  
 額定電流  
 Rated Current: 約15mA About 15mA  
 外殼材料  
 The Crust Material: 不銹鋼Stainless steel  
 防護等級IP Degree: IP67, IK10



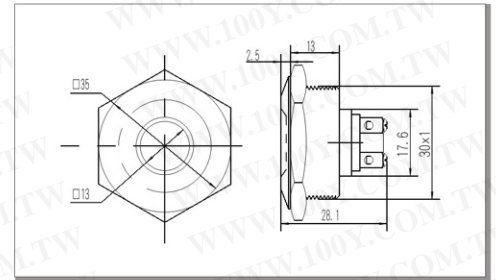
安裝尺寸Diameter: Φ30mm  
 燈珠類型Type: LED  
 燈珠顏色Color: **R G Y O B W**  
 電壓等級Voltage Rating: ≤220V  
 額定電流  
 Rated Current: 約15mA About 15mA  
 外殼材料  
 The Crust Material: 不銹鋼Stainless steel  
 防護等級IP Degree: IP67, IK10



安裝尺寸Diameter: Φ30mm  
 燈珠類型Type: LED  
 燈珠顏色Color: **R G Y O B W**  
 電壓等級Voltage Rating: ≤220V  
 額定電流  
 Rated Current: 約15mA About 15mA  
 外殼材料  
 The Crust Material: 不銹鋼Stainless steel  
 防護等級IP Degree: IP67, IK10



安裝尺寸Diameter: Φ30mm  
 燈珠類型Type: LED  
 燈珠顏色Color: **R G Y O B W**  
 電壓等級Voltage Rating: ≤220V  
 額定電流  
 Rated Current: 約15mA About 15mA  
 外殼材料  
 The Crust Material: 不銹鋼Stainless steel  
 防護等級IP Degree: IP67, IK10



產品規格	Specification	MQ30F-Δ▲J	MQ30C-Δ▲J	MQ30F-Δ▲10	MQ30C-Δ▲10	
尾部配置	Terminal Type	接线插片Pin Terminal(1.8×0.4mm)	接线插片Pin Terminal(1.8×0.4mm)	接线柱Wiring terminal	接线柱Wiring terminal	
絕緣強度	Dielectric Intensity	1100VAC	1100VAC	1100VAC	1100VAC	
環境溫度	Operating Temp	-20°C~+55°C	-20°C~+55°C	-20°C~+55°C	-20°C~+55°C	
面板厚度	Panel Thickness	1~10mm	1~10mm	1~10mm	1~10mm	
螺母扭矩	Torque	5~14Nm	5~14Nm	5~14Nm	5~14Nm	
防護等級	IP Degree	IP67,IK10	IP67,IK10	IP67,IK10	IP67,IK10	
Material	燈罩	聚碳酸酯PC	聚碳酸酯PC	聚碳酸酯PC	聚碳酸酯PC	
	外殼	不銹鋼Stainless steel	不銹鋼Stainless steel	不銹鋼Stainless steel	不銹鋼Stainless steel	
	底座	PBT	PBT	PBT	PBT	
RoHS	RoHS	可定制Made to order	可定制Made to order	可定制Made to order	可定制Made to order	
LED Spec	燈珠類型	Type	LED	LED	LED	
	額定電壓	Rated Voltage	3V/6V/12V/24V/36V/48V/110V/220V	3V/6V/12V/24V/36V/48V/110V/220V	3V/6V/12V/24V/36V/48V/110V/220V	3V/6V/12V/24V/36V/48V/110V/220V
	額定電流	Rated Current	約20mA	約20mA	約20mA	約20mA
	燈珠顏色	Color	<b>R G Y O B W</b>	<b>R G Y O B W</b>	<b>R G Y O B W</b>	<b>R G Y O B W</b>
燈珠壽命	Life	40000小时hours	40000小时hours	40000小时hours	40000小时hours	