

型 號 (Model):

5mm 圓頭紫光 395~400nm

勝特力材料 886-3-5753170
 勝特力电子(上海) 86-21-34970699
 勝特力电子(深圳) 86-755-83298787
[Http://www.100y.com.tw](http://www.100y.com.tw)

Part Number:MK-RUVLED

Rev:10

■ Absolute Maximum Rating

Item	Symbol	Absolute Maximum Rating	Unit
Forward Current	I _F	20	mA
Peak Forward Current*	I _{FP}	160	mA
Reverse Voltage	V _R	5	V
Power Dissipation	P _D	70	mW
Electrostatic discharge	E _{SD}	400	V
Operation Temperature	T _{opr}	-25~+80	°C
Storage Temperature	T _{stg}	-40~+80	°C
Lead Soldering Temperature*	T _{sol}	Max. 230°C for 5sec Max.	

*I_{FP} Conditions: Pulse Width ≤ 10msec duty ≤ 1/10

*T_{sol} Conditions: 3mm from the base of the epoxy bulb

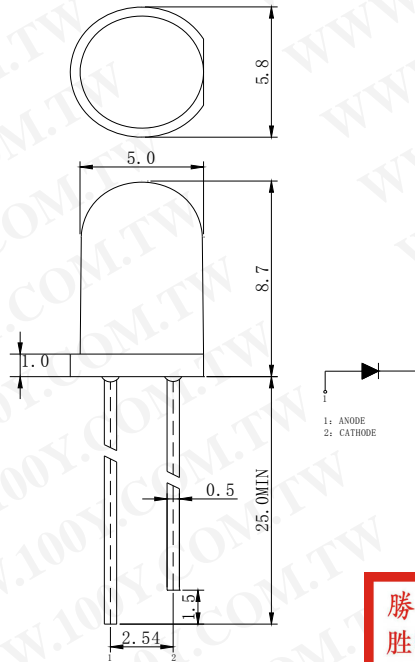
■ Typical Optical/ Electrical Characteristics

Item	Symbol	Condition	Min.	Typ.	Max.	Unit
Forward Voltage	V _F	I _F =20mA	3.2	3.4	3.6	V
Reverse Current	I _R	V _r =5V	--	--	5	uA
50% Power Angle	2 θ 1/2	I _F =20mA	--	25\30	--	deg
Luminous Intensity	I _v	I _F =20mA	300		400	mcd
Peak Wavelength	λ _P	I _F =20mA	395	--	400	nm
Recommend Forward Current	I _F (rec)	--	--	15-20	--	mA

Notes:

1. Absolute maximum ratings Ta=25°C.
2. Tolerance of measurement of forward voltage ±0.1V.
3. Tolerance of measurement of peak Wavelength ±2.0nm.
4. Tolerance of measurement of luminous intensity ±15%.

■ Package Dimensions And Materials



勝特力材料 886-3-5753170
 勝特力电子(上海) 86-21-34970699
 勝特力电子(深圳) 86-755-83298787
[Http://www.100y.com.tw](http://www.100y.com.tw)

Chip		Lens Color
Material	Emitting Color	
INGaALP	Violet	Water clear

Notes:

1. All dimension units are millimeters.
2. All dimension tolerance is $\pm 0.2\text{mm}$ unless otherwise noted.
3. An epoxy meniscus may extend about 1.5mm down the leads.
4. Burr around bottom of epoxy may be 0.5mm max..

Part Number: MK-RUVLED

Rev:10

■ Reliability Performance

1. Test Items And Result

Test Classification	Test Item	Test Conditions	Test Duration	Sample Size	AC/RE
Life Test	Room Temperature DC Operating Life Test	Ta=25°C±5°C, IF=20mA	1000 hrs	5pcs	0/1
Environment Test	Thermal Shock Test	-10°C±5°C←→+100°C±5°C 5min. 10sec. 5min.	50 cycles	5pcs	0/1
	Temperature Cycle Test	-55°C±5°C←→+85°C±5°C 30min. 5min. 30min.	50 cycles	5pcs	0/1
	High Temperature & High Humidity Test	Ta=85°C±5°C RH=85%±0.5%RH	1000 hrs	5pcs	0/1
	High Temperature Storage	Ta=100°C±5°C	1000 hrs	5pcs	0/1
	Low Temperature Storage	Ta=-55°C±5°C	1000 hrs	5pcs	0/1
Mechanical Test	Resistance to Soldering Heat	Ta=260°C±5°C	5sec.	5pcs	0/1
	Lead Integrity	Load 2.5N(0.25kgf) 0° ~ 90° ~ 0°	3times	5pcs	0/1

2. Criteria for Judging The Damage

Item	Symbol	Test Conditions	Criteria for Judgment	
			Min.	Max.
Forward Voltage	V _F	I _F =20mA		U.S.L.*1.2
Reverse Current	I _R	V _R =5V		U.S.L.*2.2
Luminous Intensity	I _v	I _F =20mA	L.S.L.**×0.7	

U.S.L.* : Upper Standard Level

L.S.L.** : Lower Standard Level

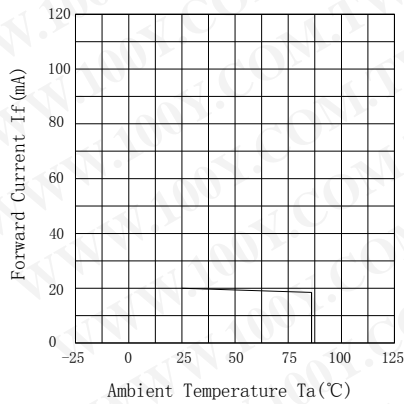
Part Number: MK-RUVLED

Rev:10

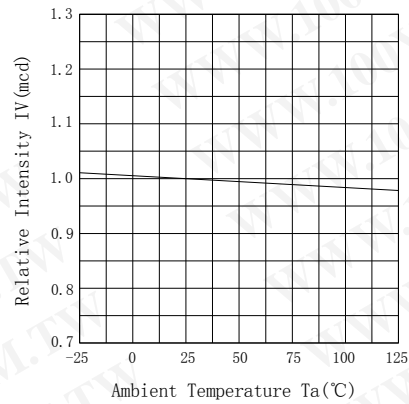
Typical Optical/Electrical Characteristics Curves

($T_a=25^\circ\text{C}$ Unless Otherwise Noted)

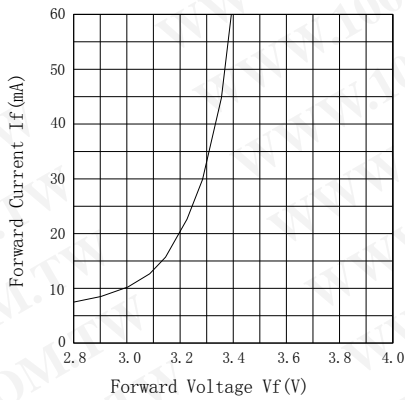
Forward Current vs. Ambient Temperature



Relative Intensity vs. Ambient Temperature



Forward Current vs. Forward Voltage



Forward Voltage vs. Ambient Temperature

