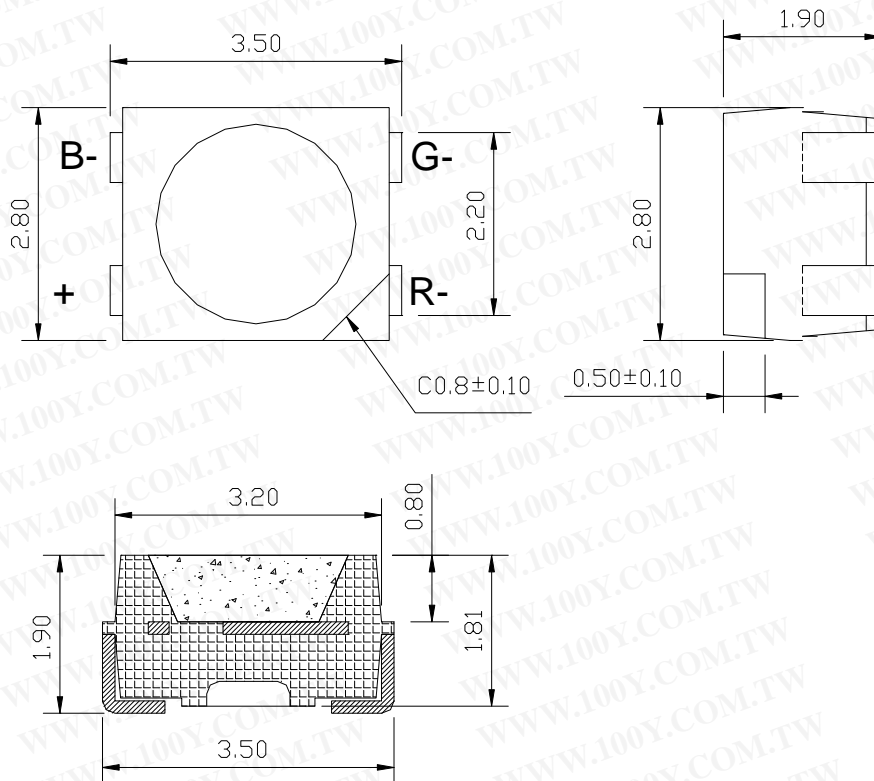


■ Features:

1. Low power consumption
2. High efficiency
3. Reliable and rugged
4. Chip Material: AlGaInP .GaN . GaN
5. Lens Color: Water Clear
6. Source Color: Red .Green . Blue

勝特力材料 886-3-5753170
勝特力电子(上海) 86-21-34970699
勝特力电子(深圳) 86-755-83298787
Http://www.100y.com.tw

■ Outline Dimensions:



Note :

1. All dimensions are in millimeters (inches)
2. Tolerance is ± 0.25 mm (.010") unless otherwise noted
3. Protruded resin under flange is 1.0mm (.04") max.
4. Lead spacing is measured where the leads emerge from the package.
5. Specifications are subject to change without notices.

■ Absolute Maximum Ratings at Ta=25°C:

| Parameter | Symbol | Red | Green | Blue | Unit |
|---|----------------|---------------------|-------|------|------|
| Power Dissipation | P _D | 75 | 120 | 120 | mW |
| Continuous Forward Current | I _F | 30 | 30 | 30 | mA |
| Reverse Voltage | V _R | 5 | | | V |
| Operating Temperature Range | Topr | -40°C to+80°C | | | |
| Storage Temperature Range | Tstg | -25°C to+100°C | | | |
| Lead Soldering Temperature 【3mm From Body】 | Tsol | 260°C For 5 Seconds | | | |

■ Electrical/Optical Characteristics at Ta=25°C:

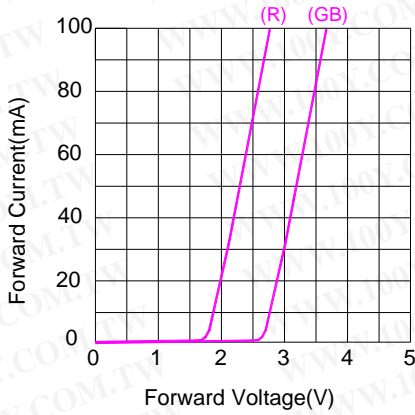
| Parameter | Symbol | Min | Typ | Max | Unit | Conditio | |
|--------------------------|--------|-----|-----|-----|------|----------|---------|
| Forward Voltage | VF | R | 1.8 | 2.0 | 2.4 | V | IF=20mA |
| | | G | 2.9 | 3.1 | 3.5 | | |
| | | B | 2.9 | 3.1 | 3.5 | | |
| Luminous Intensity | IV | R | - | 400 | - | mcd | IF=20mA |
| | | G | | 600 | | | |
| | | B | | 180 | | | |
| Dominant Wavelength | λd | R | 620 | 625 | 630 | nm | IF=20mA |
| | | G | 520 | 525 | 530 | | |
| | | B | 465 | 470 | 475 | | |
| Spectral Line Half-Width | Δλ | --- | --- | --- | nm | IF=20mA | |
| Reverse Current | IR | --- | --- | 10 | μA | VR=5V | |
| Viewing Angle | 2θ1/2 | --- | 120 | --- | deg | IF=20mA | |

Note.

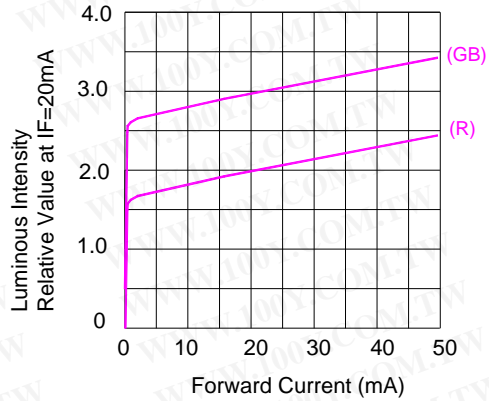
1. 2θ1/2 is the off axis angle from lamp centerline where the luminous intensity is 1/2 of the peak value.
2. View angle tolerance is ± 10

Typical Electrical/Optical Characteristics Curve: (25°C Ambient Temperature Unless Otherwise Noted)

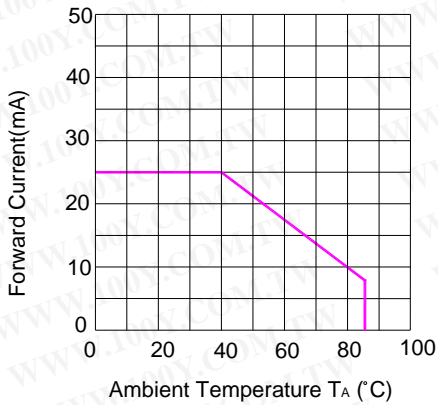
Relative Luminous Intensity vs Forward Current, $T_{Ambient}=25^{\circ}C$



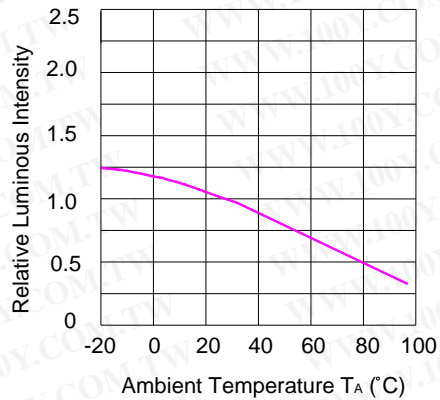
Relative Luminous Intensity vs Forward Current, $T_{Ambient}=25^{\circ}C$



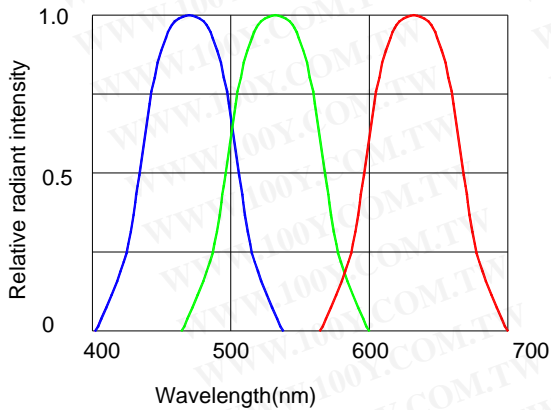
Forward Current Derating Curve, Derating based on $T_{jMAX}=85^{\circ}C$



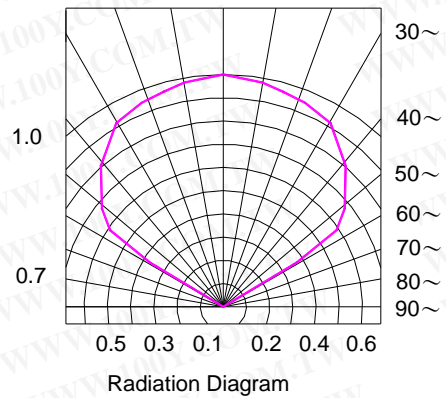
Luminous Intensity VS Ambient Temperature



Relative Spectral Distribution, $I_F=20mA$, $T_{Ambient}=25^{\circ}C$



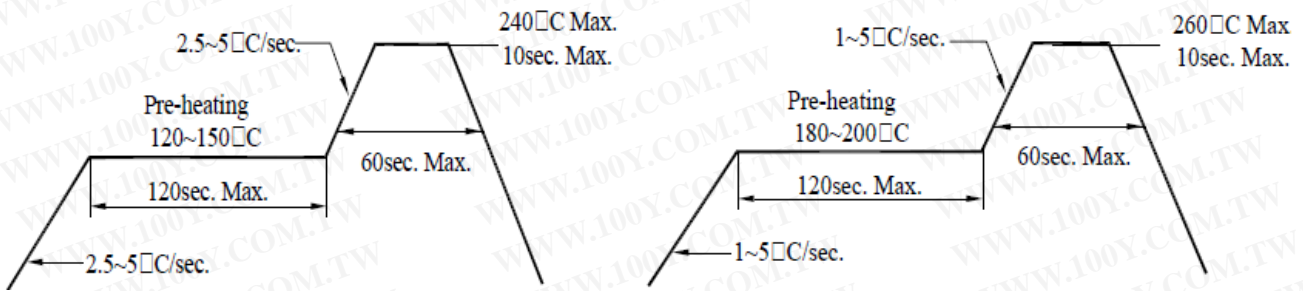
0~ 10~ 20~



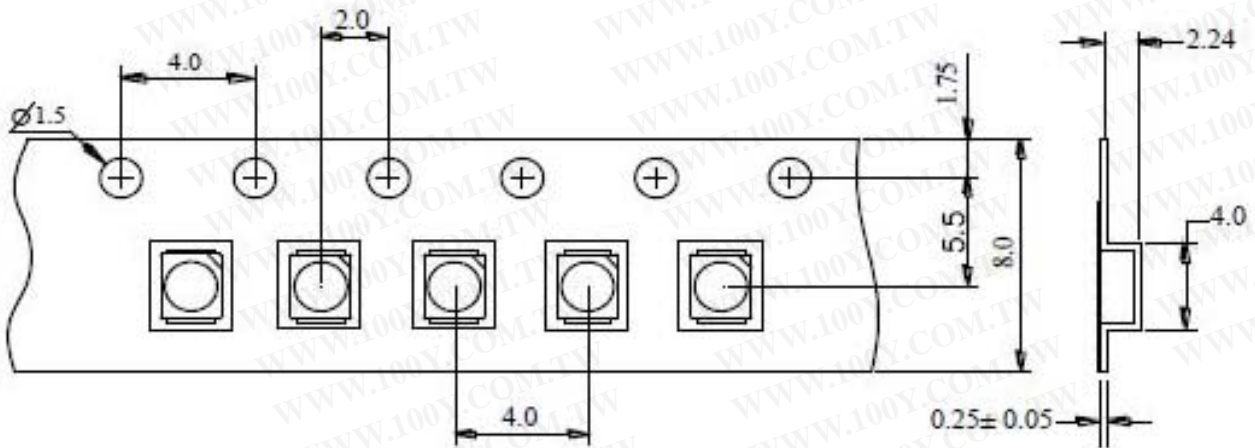
Soldering condition

| | Reflow Soldering | | Hand Soldering | |
|------------------|--------------------------------|--------------------------------|----------------------------|---|
| | Lead Solder | Lead – free Solder | | |
| Pre-heat | 120~150°C | 180~200°C | Temperature Soldering time | 350°C Max. 3sec. Max. (one time only) |
| Pre-heat time | 120sec. Max. | 120sec. Max. | | |
| Peak temperature | 240°C Max. | 260°C Max. | | |
| Soldering time | 10sec. Max. | 10sec. Max. | | |
| Condition | refer to Temperature-Profile 1 | refer to Temperature-Profile 2 | | |

Temperature profile in re-flow machine for lead type and lead free type

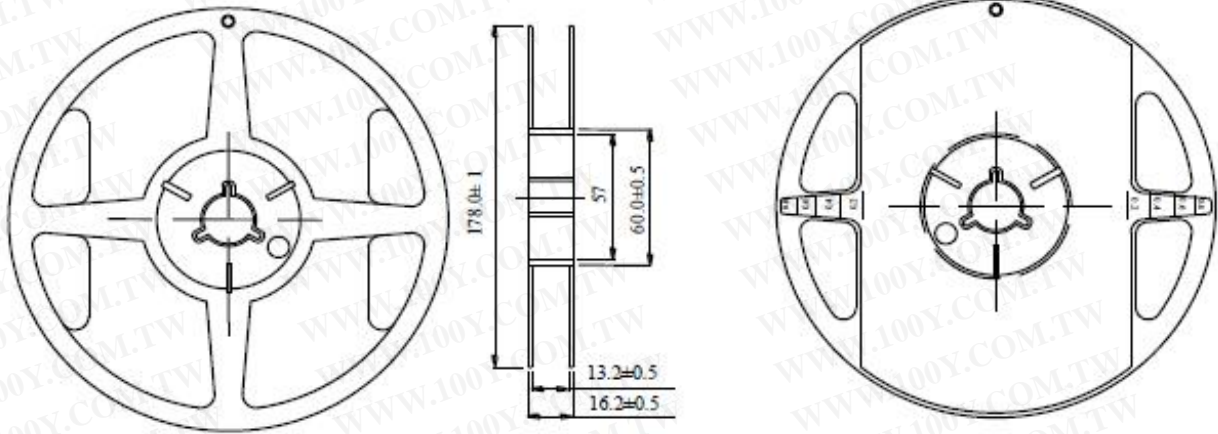


Dimension of carrier tape



勝特力材料 886-3-5753170
勝特力电子(上海) 86-21-34970699
勝特力电子(深圳) 86-755-83298787
[Http://www.100y.com.tw](http://www.100y.com.tw)

Dimension of reel



Notes:

1. All dimensions are in mm, tolerance is ± 2.0 mm unless otherwise noted.
2. Specifications are subject to change without notice.

Packing

1. 2000 piece of SMD 3528 Products on one reel. The reel will be put in the anti-static bag, then sealed.
2. 2000 piece of SMD 3528 products on one bag.