

www.osram.com



# Shining examples of economy.

OSRAM DULUX® compact fluorescent lamps with plug-in bases.

勝特力材料 886-3-5753170  
勝特力电子(上海) 86-21-54151736  
勝特力电子(深圳) 86-755-83298787  
[Http://www.100y.com.tw](http://www.100y.com.tw)

SEE THE WORLD IN A NEW LIGHT

**OSRAM**



勝特力材料 886-3-5753170  
勝特力电子(上海) 86-21-54151736  
勝特力电子(深圳) 86-755-83298787  
[Http://www.100y.com.tw](http://www.100y.com.tw)

- 4/5 Short and sweet with the benefit of long life:  
OSRAM DULUX® T PLUS.
- 6/7 Pioneer technology for versatility and economy:  
OSRAM DULUX® T/E PLUS and T/E IN PLUS.
- 8/9 Wide area lighting in a new dimension:  
OSRAM DULUX® 120W HO CONSTANT.
- 10/11 Two for twice the pleasure:  
OSRAM DULUX® D and D/E.
- 12/13 Making a statement with creative lighting  
design: OSRAM DULUX® S and S/E.
- 14/15 The new standard in lighting planning:  
OSRAM DULUX® L and L SP.
- 16/17 A little extra – inside and outside:  
OSRAM DULUX® L CONSTANT.
- 18/19 Generous light makes working easier:  
OSRAM DULUX® F.
- 20–23 The trend to greater efficiency:  
QUICKTRONIC® and DULUXTRONIC®  
electronic control gear from OSRAM.
- 24–31 Technical data





勝特力材料 886-3-5753170  
勝特力电子(上海) 86-21-54151736  
勝特力电子(深圳) 86-755-83298787  
[Http://www.100y.com.tw](http://www.100y.com.tw)

## Take a new approach to lighting design.

Compact fluorescent lamps with plug-in bases from OSRAM are considerably shorter and shallower than conventional tubular fluorescent lamps. They therefore offer a wide range of options for use in small elegant luminaires, both indoors and outdoors. Above all, OSRAM compact fluorescent lamps are shining examples of long life and impressive economy. Not only do they perform better than average, they are also kind to your wallet and kind to the environment.

勝特力材料 886-3-5753170  
勝特力电子(上海) 86-21-54151736  
勝特力电子(深圳) 86-755-83298787  
[Http://www.100y.com.tw](http://www.100y.com.tw)

## Short and sweet with the benefit of long life: OSRAM DULUX® T PLUS.

OSRAM DULUX® T has been further developed and is now available as OSRAM DULUX® T PLUS with a special coating. It offers improved maintenance and longer life. At the same time the mercury content has been reduced, which greatly reduces the load on the environment. Thanks to state-of-the-art technology the startup behavior of the amalgam lamps has been noticeably improved.



*The ideal choice for impressive lighting: OSRAM DULUX® T PLUS provides warm pleasant light, is extremely durable and can be used in any application thanks to its improved startup behavior.*

勝特力材料 886-3-5753170  
勝特力电子(上海) 86-21-54151736  
勝特力电子(深圳) 86-755-83298787  
[Http://www.100y.com.tw](http://www.100y.com.tw)



FOR  
OPERATING  
WITH CCG

## OSRAM DULUX® T PLUS

This compact fluorescent lamp is a particularly short and compact plug-in base lamp with triple-turn tubes. It is around one third shorter than the D version. With its small mounting depth it is ideal for small unconventional luminaires, short recessed downlights and modern lighting systems. It provides a warm pleasant light. Its luminous intensity distribution is rotationally symmetrical like that of incandescent lamps – but the lamps lasts eight times as long.



*The super-compact OSRAM DULUX® T PLUS is ideal for small unconventional luminaires, short recessed downlights and modern lighting systems.*

### Applications:

- Luminaires with small mounting depths
- Short recessed downlights
- Offices, halls, foyers, entrance areas

### The benefits for your customers:

- Short and super-compact
- Longer life
- Extremely economical
- Kind to the environment

# Pioneer technology for versatility and economy: OSRAM DULUX® T/E PLUS and T/E IN PLUS.

Innovative, small and economical – that's the improved OSRAM DULUX® T/E PLUS and T/E IN PLUS models. The “E versions” correspond to the successful basic OSRAM DULUX® T PLUS types in terms of their dimensions and wattages. However they are designed for ECG operation and therefore offer important benefits.



*Take off in new directions: OSRAM DULUX® T/E PLUS and T/E IN PLUS combined with modern ECGs offer even greater comfort, economy and reliability.*

勝特力材料 886-3-5753170  
勝特力电子(上海) 86-21-54151736  
勝特力电子(深圳) 86-755-83298787  
[Http://www.100y.com.tw](http://www.100y.com.tw)



FOR  
OPERATING  
WITH ECG

In combination with ECGs these compact fluorescent lamps are even more economical, more comfortable and more reliable. The matching ECGs are DULUXTRONIC® (ECGs with integrated holders) and QUICKTRONIC® (for one or two-lamp operation) from OSRAM. The QUICKTRONIC® DIMMABLE family of ECGs is also available for creating dimmable luminaires.

## OSRAM DULUX® T/E PLUS

Short and sweet. OSRAM DULUX® T/E PLUS with its shortened plug-in base has been designed specifically for small or short luminaires and systems. It is a small economic miracle because in conjunction with an ECG it will last thirteen times longer than incandescent lamps of comparable brightness.

## OSRAM DULUX® T/E IN PLUS

The ambient temperature of indoor applications can be very high indeed. Narrow downlights for example get very hot. OSRAM DULUX® T/E IN PLUS is perfectly equipped for such extreme demands. 90 percent of the luminous flux is achieved at ambient temperatures between 10°C and 70°C. It can be used in almost all burning positions. With its new technology it now has improved startup behavior. It is used with the same ECGs that are used for OSRAM DULUX® T/E PLUS lamps – and even the bases are identical.

### Applications:

- Luminaires with small mounting depths
- High-intensity luminaires and downlights
- Direct and indirect lighting
- High luminous flux so also suitable for outdoors (T/E IN PLUS)
- Emergency lighting (T/E IN PLUS)

### The benefits for your customers:

- Small and economical
- Comfortable and economical thanks to ECG operation
- Can be used in almost all burning positions
- Fully dimmable

### OSRAM DULUX® T/E IN PLUS:

- New technology for improved startup behavior
- 90% luminous flux at ambient temperatures between 10°C and 70°C

OSRAM DULUX® WITH PLUG-IN BASES

勝特力材料 886-3-5753170  
勝特力电子(上海) 86-21-54151736  
勝特力电子(深圳) 86-755-83298787  
[Http://www.100y.com.tw](http://www.100y.com.tw)

## Wide area lighting in a new dimension: OSRAM DULUX® 120W HO CONSTANT.

This innovative compact fluorescent lamp is the first lamp in the CONSTANT family of lamps. It offers a high luminous flux of 9,000 lm and a very long average life of 20,000 hours. Thanks to optimized amalgam technology, high luminous flux is provided over a wide range of ambient temperatures. 90% is achieved between +5 °C and +70 °C.



*A completely new perspective: With its very long life and high luminous flux, OSRAM DULUX® 120W HO CONSTANT opens up new possibilities for bright, modern, economical lighting solutions. Source: Spittler Lichttechnik GmbH, Goslar.*

勝特力材料 886-3-5753170  
勝特力电子(上海) 86-21-54151736  
勝特力电子(深圳) 86-755-83298787  
[Http://www.100y.com.tw](http://www.100y.com.tw)



FOR  
OPERATING  
WITH ECG

## OSRAM DULUX® 120W HO CONSTANT

OSRAM DULUX® 120W HO CONSTANT is the first choice for new high-intensity downlights, ceiling lights and workplace lighting in industry and commerce. Depending on the lighting system, it offers energy savings of up to 10% compared with systems with conventional lamps. Thanks to the high luminous flux, fewer luminaires are needed in new installations – which in turn means lower procurement and installation costs. Its very long life also reduces the cost of maintenance because lamps need replacing less often.

OSRAM DULUX® 120W HO CONSTANT also easily complies with important environmental criteria in accordance with the RoHS directive (Restriction of Hazardous Substances). For example, it does not contain any lead and is recyclable. The lamp is available in LUMILUX® Warm White (830) or LUMILUX® Cool White (840) and has not yet been approved for dimming.

### Applications:

- Public buildings, shopping malls
- Warehouses, parking ramps
- Sports halls
- Outdoor lighting



*OSRAM DULUX® 120W HO CONSTANT is perfect for new installations thanks to low procurement, installation and maintenance costs.  
Source: Spittler Lichttechnik GmbH, Goslar.*

### The benefits for your customers:

- Shortest lamp in this segment (quadruple turn tubes)
- Instant hot restart after a power outage
- Greater freedom for lighting designers
- Good color rendering and color stability over the entire lifetime
- Specially developed four-pin base (2G8)

勝特力材料 886-3-5753170  
勝特力电子(上海) 86-21-54151736  
勝特力电子(深圳) 86-755-83298787  
[Http://www.100y.com.tw](http://www.100y.com.tw)

## Two for twice the pleasure: OSRAM DULUX® D and D/E.

OSRAM DULUX® D and D/E lamps are modern energy-saving light sources. They provide pleasant light in LUMILUX® light colors with excellent color rendering. They have the same overall length as OSRAM DULUX® S lamps but produce double the luminous flux. These exceptionally low-profile and very short compact fluorescent lamps will fit in miniaturized luminaires and downlights with small mounting depths.



*Inconspicuous lamps with a conspicuous effect: OSRAM DULUX® D and D/E lamps are impressive for their extremely compact dimensions, high luminous flux, excellent color rendering and outstanding economy.*

勝特力材料 886-3-5753170  
 勝特力电子(上海) 86-21-54151736  
 勝特力电子(深圳) 86-755-83298787  
[Http://www.100y.com.tw](http://www.100y.com.tw)



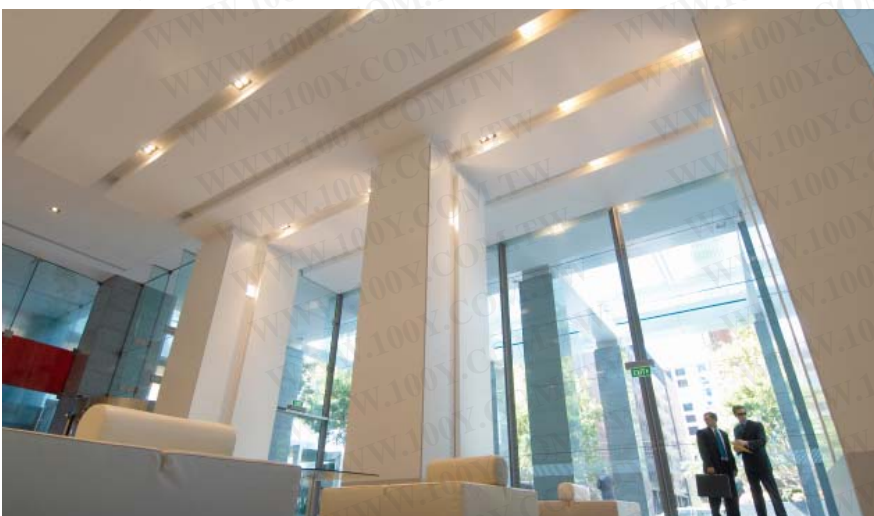
## OSRAM DULUX® D

## OSRAM DULUX® D/E

Strong performance from a small package: OSRAM DULUX® D is only a little taller and one third narrower than an ordinary light bulb. Its preferred applications therefore include down-lights with small mounting depths and miniaturized luminaires.

In terms of its form and function this compact fluorescent lamp corresponds to the tried and tested OSRAM DULUX® D. If operated on electronic control gear however it offers greater comfort, economy and reliability. The functions of preheating, ignition, current limitation and compensation are integrated in the ECG. DULUXTRONIC®

electronic control gear from OSRAM even includes the lampholder; some ECGs have integrated strain relief for the power cable. This greatly reduces the assembly and wiring work needed in the luminaire. Conventional luminaires designed for incandescent lamps can therefore be easily upgraded to modern and efficient operation.



OSRAM DULUX® D and D/E provide strong pleasant light for foyers and entrance areas, guaranteeing a particularly friendly welcome.

- Applications:**
- Luminaires with small mounting depths
  - Miniaturized luminaires, downlights
  - Foyers, entrance areas

- The benefits for your customers:**
- Exceptional performance and extremely impressive economy
  - The lamps consume only 20 to 25 % of the power of ordinary light bulbs of comparable brightness
  - Longer life than incandescent lamps of comparable brightness
  - LUMILUX® light colors for good color rendering

勝特力材料 886-3-5753170  
勝特力电子(上海) 86-21-54151736  
勝特力电子(深圳) 86-755-83298787  
[Http://www.100y.com.tw](http://www.100y.com.tw)

## Making a statement with creative lighting design: OSRAM DULUX® S and S/E.

With their small dimensions and low-profile form, OSRAM DULUX® S and S/E lamps are particularly suitable for creative lighting design. All the exciting possibilities offered by modern luminaire design can therefore be fully exploited without having to make any compromises in lighting comfort. Their warm and pleasant light is not at all intrusive and provides optimum color rendering.



*The first step in modern lighting design: The elongated shape of OSRAM DULUX® S and S/E lamps makes them ideal for super low-profile wall-mounted luminaires and many other lighting solutions that combine creativity with economy.*

勝特力材料 886-3-5753170  
勝特力电子(上海) 86-21-54151736  
勝特力电子(深圳) 86-755-83298787  
[Http://www.100y.com.tw](http://www.100y.com.tw)



FOR  
OPERATING  
WITH CCG



FOR  
OPERATING  
WITH ECG

## OSRAM DULUX® S

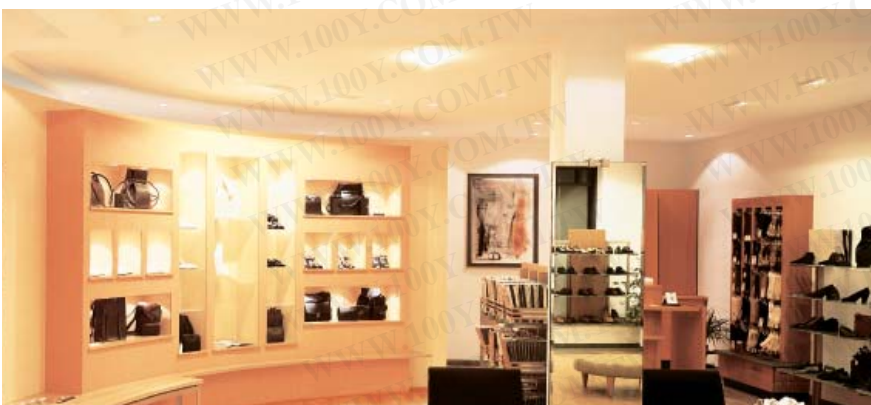
The OSRAM DULUX® S has an extremely low profile. Its elongated shape makes it the perfect light source for super low-profile wall-mounted luminaires. But it also reveals its strengths in other lighting systems, such as special luminaires for stairwells, floor-mounted luminaires, garden lights and pathway lights.

## OSRAM DULUX® S/E

These innovative compact fluorescent lamps can be connected to any kind of power supply with appropriate OSRAM control gear (QUICKTRONIC®, DULUXTRONIC® or ACCUTRONIC®). This makes them so versatile, as they can be run on battery power, solar power or a normal ac power supply. In terms of the principle by which they operate, they correspond to the basic OSRAM DULUX® S type but offer all the benefits of ECG operation.

### Applications:

- Downlights with small mounting depths
- Miniaturized luminaires
- Medical practices, stairwells, foyers, entrance areas
- Floor or garden lighting



*With their warm subtle light and optimum color rendering OSRAM DULUX® S and S/E lamps are in best form in almost every environment.*

### The benefits for your customers:

- Exceptional performance and extremely impressive economy
- Eight times the life and only 20 to 25 % of the power consumption of ordinary light bulbs of comparable brightness.
- LUMILUX® light colors for good color rendering

### OSRAM DULUX® S/E:

- Better economy, greater lighting comfort and improved reliability thanks to ECG operation

OSRAM DULUX® WITH PLUG-IN BASES

勝特力材料 886-3-5753170  
勝特力电子(上海) 86-21-54151736  
勝特力电子(深圳) 86-755-83298787  
[Http://www.100y.com.tw](http://www.100y.com.tw)

## The new standard in lighting planning: OSRAM DULUX® L and L SP.

With their pleasant and economical light, OSRAM DULUX® L lamps can be used indoors and outdoors to provide interesting and unusual accent lighting. Excellent color rendering is ensured by the LUMILUX® and LUMILUX® DE LUXE light colors. They can therefore be combined with existing LUMILUX® lighting.



*The road to better lighting: With their compact dimensions, strong light and excellent color rendering, OSRAM DULUX® L lamps can be used for special accent lighting indoors or outdoors.*

勝特力材料 886-3-5753170  
 勝特力电子(上海) 86-21-54151736  
 勝特力电子(深圳) 86-755-83298787  
[Http://www.100y.com.tw](http://www.100y.com.tw)



FOR OPERATING WITH CCG AND ECG

FOR OPERATING WITH CCG AND ECG

**OSRAM DULUX® L**

**OSRAM DULUX® L SP**

A compact light source with a high luminous flux: OSRAM DULUX® L are lamps from the higher wattage category. They have approximately the same luminous flux and power consumption as tubular fluorescent lamps but are less than half as long and are more compact than U-shaped and ring lamps.

In the 18, 24 and 36W versions, OSRAM DULUX® L lamps can be operated with conventional or electronic control gear. The higher wattages (OSRAM DULUX® L 40W, 55W and 80W) are designed exclusively for ECG operation.

The OSRAM DULUX® L SP lamp has been developed specifically for use in outdoor lighting. Its maximum luminous flux has been shifted to the average outdoor temperature of 5 °C.

**The benefits for your customers:**

- Low procurement costs
- Suitable for CCG or ECG operation depending on the wattage
- Low installation costs
- Low electricity costs
- Low lamp replacement costs

**OSRAM DULUX® L SP:**

- Specifically for outdoor lighting

**Applications:**

- Ideal for new short-run luminaires
- For rectangular, square and round ceiling and wall luminaires
- In foyers, offices, retail outlets and exhibition rooms



*OSRAM DULUX® L meet the highest demands with almost the same luminous flux and power consumption as tubular fluorescent lamps.*

勝特力材料 886-3-5753170  
勝特力电子(上海) 86-21-54151736  
勝特力电子(深圳) 86-755-83298787  
[Http://www.100y.com.tw](http://www.100y.com.tw)

## A little extra – inside and outside: OSRAM DULUX® L CONSTANT.

Die OSRAM DULUX® L CONSTANT is also one of the new family of CONSTANT lamps from OSRAM. Thanks to new amalgam technology these innovative compact fluorescent lamps offer high luminous flux over a wide temperature range. They can therefore be used in outdoor applications and in high-intensity uplights.



*Impressive technology: OSRAM DULUX® L CONSTANT features innovative amalgam technology for new high-intensity economical solutions in modern indoor, outdoor and industrial lighting.*

勝特力材料 886-3-5753170  
勝特力电子(上海) 86-21-54151736  
勝特力电子(深圳) 86-755-83298787  
[Http://www.100y.com.tw](http://www.100y.com.tw)



FOR  
OPERATING  
WITH ECG

## OSRAM DULUX® L CONSTANT

OSRAM DULUX® L CONSTANT uses new optimized high-temperature amalgam technology. This enables the lamps to operate with a luminous flux greater than 90 % in a wide temperature range from +5 °C to +70 °C. This is an enormous increase compared with conventional OSRAM DULUX® L lamps (>90 % between +20 °C and +40 °C).

OSRAM DULUX® L CONSTANT lamps are available in three wattages (40, 55 and 80 W), in each case in light color LUMILUX® Cool White (840). The lamps have the same bases (2G11) and the same dimensions as corresponding conventional OSRAM DULUX® L lamps. They have a red stamp to distinguish them. Provisional information on dimming: OSRAM DULUX® L CONSTANT lamps have not yet been approved for dimming.



*With their compact dimensions, strong light and optimized temperature/luminous flux behavior, OSRAM DULUX® L lamps do a perfect job wherever they are used.*

### Applications:

- Outdoor lighting
- Indoor lighting
- Industrial lighting
- Narrow luminaires with high temperatures
- Studio lighting

### The benefits for your customers:

- Optimized temperature/luminous flux behavior
- As bright and compact as OSRAM DULUX® L
- Even more versatile for indoors and outdoors

勝特力材料 886-3-5753170  
勝特力电子(上海) 86-21-54151736  
勝特力电子(深圳) 86-755-83298787  
[Http://www.100y.com.tw](http://www.100y.com.tw)

## Generous light makes working easier: OSRAM DULUX® F.

Large areas need special light. OSRAM DULUX® F compact fluorescent lamps are the right choice. With their high luminous efficacy they are ideal for area lighting with 2 M and 3 M modular luminaires (200 and 300 mm sides).



*Shedding light: With their impressive combination of high luminous efficacy and economy, OSRAM DULUX® F lamps provide full-coverage lighting in large rooms.  
Source: VIBA Lichtsysteme.*

勝特力材料 886-3-5753170  
勝特力电子(上海) 86-21-54151736  
勝特力电子(深圳) 86-755-83298787  
[Http://www.100y.com.tw](http://www.100y.com.tw)



FOR  
OPERATING  
WITH CCG  
AND ECG



*OSRAM DULUX® F provides the basis for unusual lighting solutions with simple handling and low system costs in ECG or conventional operation.*

## OSRAM DULUX® F

OSRAM DULUX® F lamps offer particularly high luminous flux. Compared with two OSRAM DULUX® L 18W lamps, a single OSRAM DULUX® F 36W lamp operated on electronic control gear has a 13 percent higher luminous flux. This not only simplifies handling, it reduces system costs considerably.

The OSRAM DULUX® F lamp is only about half as long as an OSRAM DULUX® L lamp of comparable output. And it can be combined with LUMILUX® light colors with no problem at all. It can be operated with either conventional or electronic control gear.

### Applications:

- Wherever wide-area lighting is needed
- Medical practices, workshops, retail outlets
- For square surface-mounted and recessed luminaires, low-profile wall and ceiling luminaires

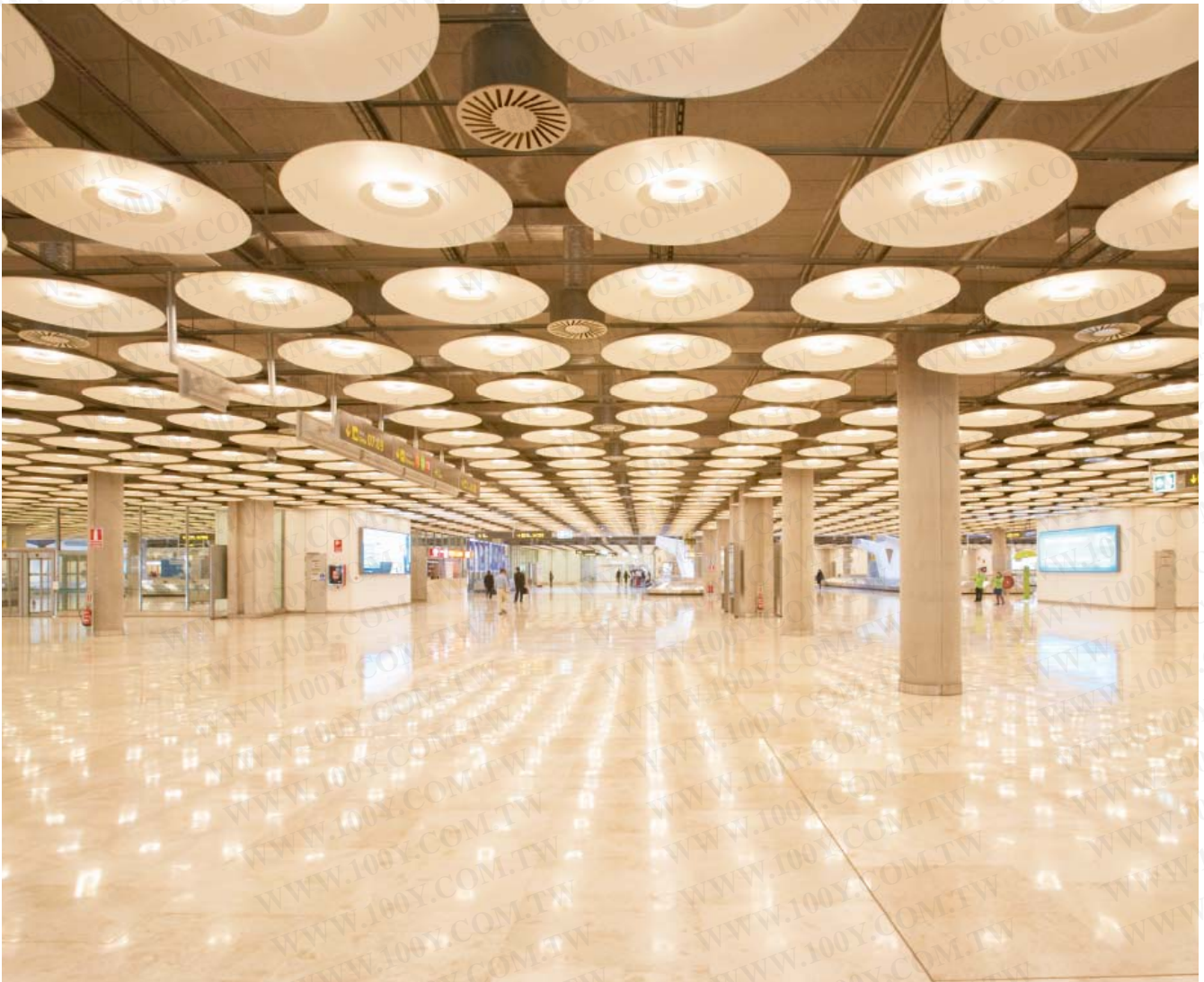
### The benefits for your customers:

- High luminous efficacy
- Compact dimensions
- Simple handling with low system costs

勝特力材料 886-3-5753170  
勝特力电子(上海) 86-21-54151736  
勝特力电子(深圳) 86-755-83298787  
[Http://www.100y.com.tw](http://www.100y.com.tw)

## The trend to greater efficiency: QUICKTRONIC® and DULUXTRONIC® electronic control gear from OSRAM.

Operating lamps on QUICKTRONIC® and DULUXTRONIC® offers greater comfort, greater economy and greater reliability than with conventional control gear. These compact ECGs for small luminaires enable energy-saving lamps to be used in a large number of lighting solutions.



*The systematic approach to perfect light: Compact fluorescent lamps from OSRAM achieve their full potential in systems with matching electronic control gear also from OSRAM.*



*Electronic control gear from OSRAM provide greater comfort, economy and reliability in a large number of modern lighting solutions.*

Compact fluorescent lamps have to be operated with control gear because the process of gas discharge calls for defined currents and voltages. In addition to the basic functions that can also be performed by conventional control gear, modern ECGs offer more. They ignite compact fluorescent lamps without flickering after a defined hot restart. Compared with cold starting, this form of protective ignition ensures that the number of switching cycles has a negligible effect on lamp life.

The high operating frequency used in ECG operation provides constant flickerfree light with no stroboscopic effects. The same lamp type needs less electricity to produce the same luminous flux when it has a high-frequency supply voltage. This reduced power consumption leads to a lower load on the lamp and therefore to a longer life and improved efficiency.

ECGs from OSRAM permanently monitor all the parameters relevant to safety. Critical operating states are detected and the ECG safely shuts down the lamp. A hold function prevents annoying startup attempts from being made, and thermal overloads are ruled out. This is an important contribution to greater safety in lighting systems.

The trend in the lighting industry for energy-efficient lighting systems with ECGs will continue at great pace in the coming years. The driving forces are better economy, greater lighting comfort and improved reliability.

#### The benefits of ECGs.

##### Greater economy:

- Much longer lamp life than with conventional control gear
- Improved lamp efficiency
- Energy savings of more than 30 % compared with ECG operation
- No adverse effect from frequent on/off switching thanks to optimized starting

##### More comfort:

- Flicker-free starting
- Constant flicker-free light
- Silent operation
- No flashing or flickering at the end of life

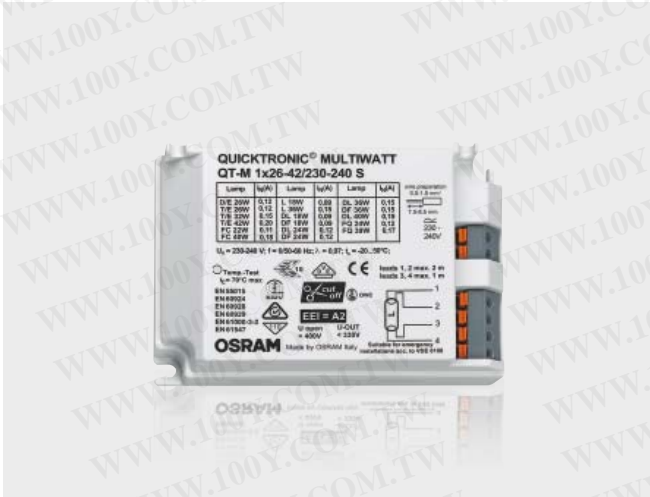
##### More safety:

- Safety shutdown of lamps in the event of a defect or at end of life
- Around 80 % lower thermal output compared with ordinary light bulbs
- Suitable for safety lighting (DC operation)

勝特力材料 886-3-5753170  
 勝特力电子(上海) 86-21-54151736  
 勝特力电子(深圳) 86-755-83298787  
[Http://www.100y.com.tw](http://www.100y.com.tw)

# More alternatives, more possibilities: the optimum ECG for every lamp and every application.

勝特力材料 886-3-5753170  
 勝特力电子(上海) 86-21-54151736  
 勝特力电子(深圳) 86-755-83298787  
[Http://www.100y.com.tw](http://www.100y.com.tw)



**One for many:  
QUICKTRONIC® MULTIWATT.**

**Economical lighting comfort:  
QUICKTRONIC® DIMMABLE.**

This family of ECGs is suitable for optimum operation of different wattages and lamp types. The flexible use of just a few QUICKTRONIC® MULTIWATT types can reduce stock levels and cut down on planning, logistics and manufacturing costs.

More and more importance is being placed on lighting control in the domestic, commercial and public sectors. The main focus is on greater lighting comfort and economy. QUICKTRONIC® DIMMABLE is the ideal solution for integrating dimmable luminaires for example in offices with daylight-dependent lighting control systems, in conference rooms with situation-dependent lighting control and at PC/CAD workstations with individual adjustment of lighting levels.



Modern ECGs offer more: They ensure flickerfree starting, flickerfree light, much longer life and improved efficiency of the lamp.

勝特力材料 886-3-5753170  
 勝特力电子(上海) 86-21-54151736  
 勝特力电子(深圳) 86-755-83298787  
[Http://www.100y.com.tw](http://www.100y.com.tw)



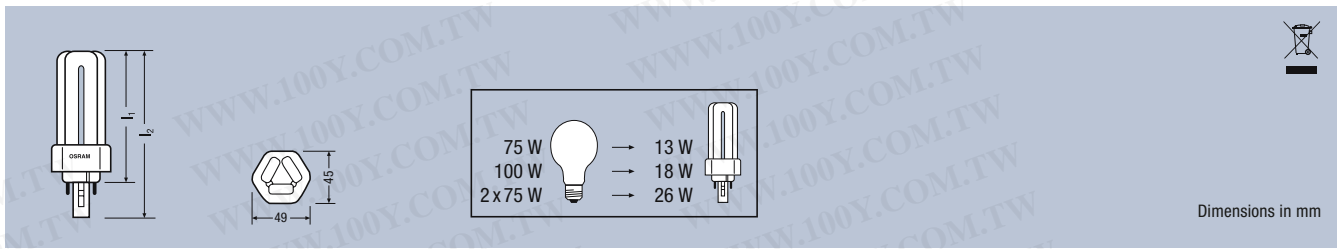
**The electronic alternative to CCGs:  
 QUICKTRONIC® ECONOMIC.**

QUICKTRONIC® ECONOMIC is an ECG that has the typical geometry of a CCG. It can therefore be used where different CCG types were previously needed. With QUICKTRONIC® ECONOMIC it is possible to upgrade a large number of luminaires to energy-efficient ECG operation quickly, easily and economically.

**Compact and low-cost:  
 DULUXTRONIC®.**

Constructing compact luminaires and manufacturing them with minimal assembly costs is no problem at all – thanks to DULUXTRONIC®. A total of five different geometrical versions are available, offering the optimum ECG solution for almost every type of lamp and virtually every application.

## OSRAM DULUX® T PLUS – FOR CONVENTIONAL CONTROL GEAR (CCG)

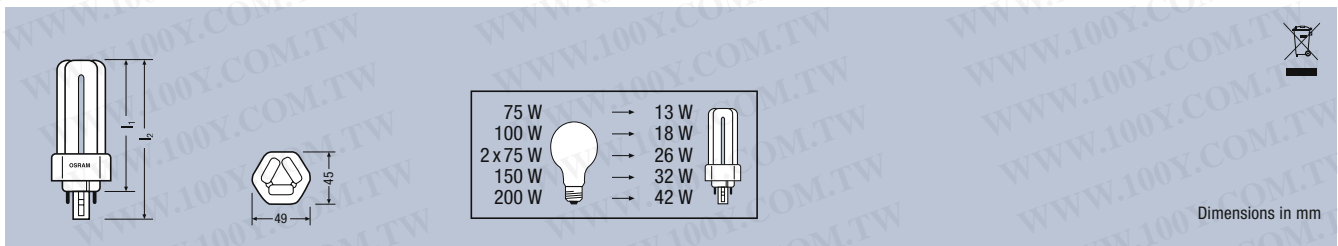


Dimensions in mm

Reference	Rated wattage (W)	Light color	Color rendering group	Luminous flux (lm)	Length l <sub>1</sub> max. (mm)	Length l <sub>2</sub> max. (mm)	Length to IEC l <sub>1</sub> max. (mm)	Base	Standard pack (pcs.)	EAN	Energy label
<b>OSRAM DULUX® T PLUS</b> for operating with CCG											
DULUX T 13 W/840 PLUS	13	LUMILUX Cool White	1 B	900	90	113	90	GX24d-1	10	446905	A
DULUX T 13 W/830 PLUS	13	LUMILUX Warm White	1 B	900	90	113	90	GX24d-1	10	446929	A
DULUX T 13 W/827 PLUS	13	LUMILUX INTERNA	1 B	900	90	113	90	GX24d-1	10	446943	A
DULUX T 18 W/840 PLUS	18	LUMILUX Cool White	1 B	1200	100	123	110	GX24d-2	10	333465	B
DULUX T 18 W/830 PLUS	18	LUMILUX Warm White	1 B	1200	100	123	110	GX24d-2	10	333489	B
DULUX T 18 W/827 PLUS	18	LUMILUX INTERNA	1 B	1200	100	123	110	GX24d-2	10	333502	B
DULUX T 26 W/840 PLUS	26	LUMILUX Cool White	1 B	1800	115	138	130	GX24d-3	10	342047	B
DULUX T 26 W/830 PLUS	26	LUMILUX Warm White	1 B	1800	115	138	130	GX24d-3	10	342061	B
DULUX T 26 W/827 PLUS	26	LUMILUX INTERNA	1 B	1800	115	138	130	GX24d-3	10	342085	B

OSRAM DULUX® T PLUS 18 W suitable only for operation with 0.22 A control gear.

## OSRAM DULUX® T/E PLUS – FOR ELECTRONIC CONTROL GEAR (ECG) AND FOR DIMMING

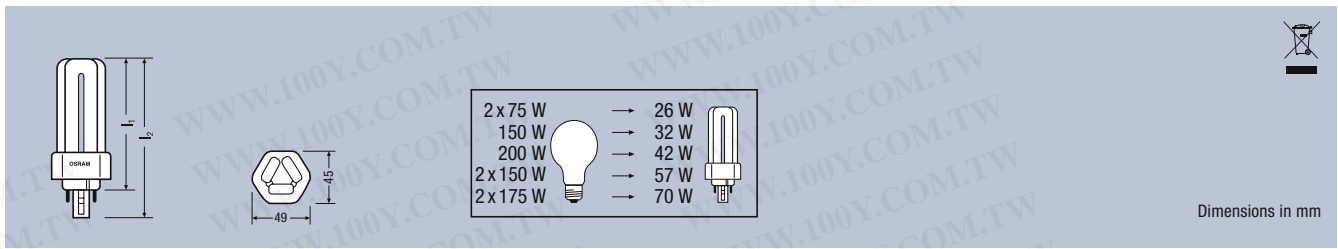


Dimensions in mm

Reference	Rated wattage (W)	Light color	Color rendering group	Luminous flux (lm)	Length l <sub>1</sub> max. (mm)	Length l <sub>2</sub> max. (mm)	Length to IEC l <sub>1</sub> max. (mm)	Base	Standard pack (pcs.)	EAN	Energy label
<b>OSRAM DULUX® T/E PLUS</b> for operation with QUICKTRONIC® ECG											
DULUX T/E 13 W/840 PLUS	13	LUMILUX Cool White	1 B	900	90	106	90	GX24q-1	10	446967	A
DULUX T/E 13 W/830 PLUS	13	LUMILUX Warm White	1 B	900	90	106	90	GX24q-1	10	446981	A
DULUX T/E 13 W/827 PLUS	13	LUMILUX INTERNA	1 B	900	90	106	90	GX24q-1	10	447001	A
DULUX T/E 18 W/840 PLUS	18	LUMILUX Cool White	1 B	1200	100	116	110	GX24q-2	10	342221	A
DULUX T/E 18 W/830 PLUS	18	LUMILUX Warm White	1 B	1200	100	116	110	GX24q-2	10	342245	A
DULUX T/E 18 W/827 PLUS	18	LUMILUX INTERNA	1 B	1200	100	116	110	GX24q-2	10	342269	A
DULUX T/E 26 W/840 PLUS	26	LUMILUX Cool White	1 B	1800	115	131	130	GX24q-3	10	342283	B
DULUX T/E 26 W/830 PLUS	26	LUMILUX Warm White	1 B	1800	115	131	130	GX24q-3	10	342306	B
DULUX T/E 26 W/827 PLUS	26	LUMILUX INTERNA	1 B	1800	115	131	130	GX24q-3	10	342320	B
DULUX T/E 32 W/840 PLUS	32	LUMILUX Cool White	1 B	2400	131	147	145	GX24q-3	10	348568	B
DULUX T/E 32 W/830 PLUS	32	LUMILUX Warm White	1 B	2400	131	147	145	GX24q-3	10	348582	B
DULUX T/E 32 W/827 PLUS	32	LUMILUX INTERNA	1 B	2400	131	147	145	GX24q-3	10	348605	B
DULUX T/E 42 W/840 PLUS	42	LUMILUX Cool White	1 B	3200	152	168	155	GX24q-4	10	425627	B
DULUX T/E 42 W/830 PLUS	42	LUMILUX Warm White	1 B	3200	152	168	155	GX24q-4	10	425641	B
DULUX T/E 42 W/827 PLUS	42	LUMILUX INTERNA	1 B	3200	152	168	155	GX24q-4	10	425665	B

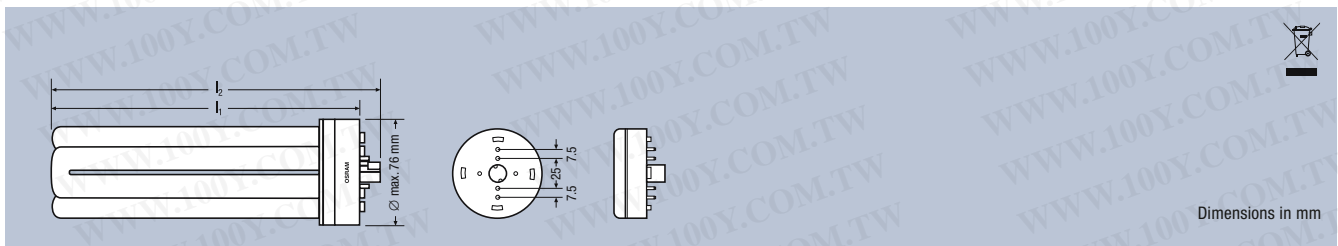
勝特力材料 886-3-5753170  
 勝特力电子(上海) 86-21-54151736  
 勝特力电子(深圳) 86-755-83298787  
[Http://www.100y.com.tw](http://www.100y.com.tw)

## OSRAM DULUX® T/E IN PLUS – FOR ELECTRONIC CONTROL GEAR (ECG)



Reference	Rated wattage (W)	Light color	Color rendering group	Luminous flux (lm)	Length l <sub>1</sub> max. (mm)	Length l <sub>2</sub> max. (mm)	Length to IEC l <sub>1</sub> max. (mm)	Base	Standard pack (pcs.)	EAN	Energy label
<b>OSRAM DULUX® T/E IN PLUS</b> for operation with QUICKTRONIC® ECG											
DULUX T/E 26 W/840 IN PLUS	26	LUMILUX Cool White	1 B	1800	110	126	130	GX24q-3	10	425443	B
DULUX T/E 26 W/830 IN PLUS	26	LUMILUX Warm White	1 B	1800	110	126	130	GX24q-3	10	425467	B
DULUX T/E 26 W/827 IN PLUS	26	LUMILUX INTERNA	1 B	1800	110	126	130	GX24q-3	10	425481	B
DULUX T/E 32 W/840 IN PLUS	32	LUMILUX Cool White	1 B	2400	126	142	145	GX24q-3	10	425504	B
DULUX T/E 32 W/830 IN PLUS	32	LUMILUX Warm White	1 B	2400	126	142	145	GX24q-3	10	425528	B
DULUX T/E 32 W/827 IN PLUS	32	LUMILUX INTERNA	1 B	2400	126	142	145	GX24q-3	10	425542	B
DULUX T/E 42 W/840 IN PLUS	42	LUMILUX Cool White	1 B	3200	147	163	155	GX24q-4	10	425566	B
DULUX T/E 42 W/830 IN PLUS	42	LUMILUX Warm White	1 B	3200	147	163	155	GX24q-4	10	425580	B
DULUX T/E 42 W/827 IN PLUS	42	LUMILUX INTERNA	1 B	3200	147	163	155	GX24q-4	10	425603	B
DULUX T/E 57 W/840 IN PLUS	57	LUMILUX Cool White	1 B	4300	179	195	179	GX24q-5	10	622675	B
DULUX T/E 57 W/830 IN PLUS	57	LUMILUX Warm White	1 B	4300	179	195	179	GX24q-5	10	622699	B
DULUX T/E 70 W/840 IN PLUS	70	LUMILUX Cool White	1 B	5200	219	235	219	GX24q-6	10	800417	B

## OSRAM DULUX® 120 W HO CONSTANT – FOR ELECTRONIC CONTROL GEAR (ECG)



Reference	Rated wattage (W)	Light color	Color rendering group	Luminous flux (lm)	Length l <sub>1</sub> max. (mm)	Length l <sub>2</sub> max. (mm)	Length to IEC l <sub>1</sub> max. (mm)	Base	Standard pack (pcs.)	EAN	Energy label
<b>OSRAM DULUX® 120 W HO CONSTANT</b> for operation with QUICKTRONIC® ECG											
DULUX 120 W HO CONSTANT	120	LUMILUX Warm White	1 B	9000	215	230	225	2G8-1	6	053008	B
DULUX 120 W HO CONSTANT	120	LUMILUX Cool White	1 B	9000	215	230	225	2G8-1	6	053022	B

勝特力材料 886-3-5753170  
 勝特力电子(上海) 86-21-54151736  
 勝特力电子(深圳) 86-755-83298787  
[Http://www.100y.com.tw](http://www.100y.com.tw)

## OSRAM DULUX® D – FOR CONVENTIONAL CONTROL GEAR (CCG)

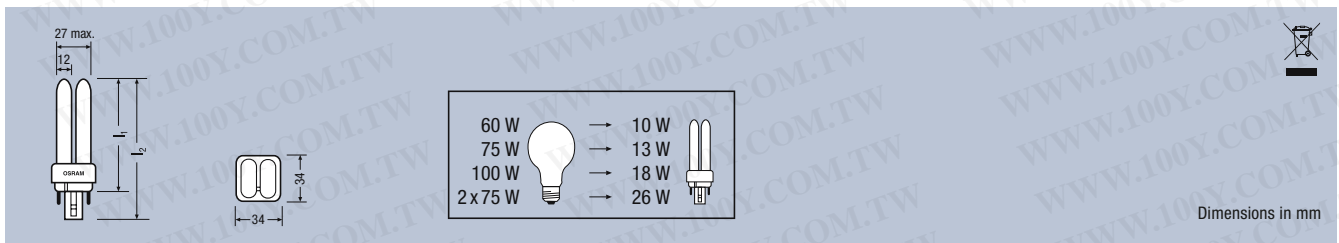


Dimensions in mm

Reference	Rated wattage (W)	Light color	Color rendering group	Luminous flux (lm)	Length l <sub>1</sub> max. (mm)	Length l <sub>2</sub> max. (mm)	Length to IEC l <sub>1</sub> max. (mm)	Base	Standard pack (pcs.)	EAN 4050300...	Energy label
<b>OSRAM DULUX® D</b> for operation with CCGs											
DULUX D 10 W/840	10	LUMILUX Cool White	1 B	600	87	110	95	G24d-1	10/50	<b>010595</b>	B
DULUX D 10 W/830	10	LUMILUX Warm White	1 B	600	87	110	95	G24d-1	10/50	<b>025681</b>	B
DULUX D 10 W/827	10	LUMILUX INTERNA	1 B	600	87	110	95	G24d-1	10/50	<b>008110</b>	B
DULUX D 13 W/840	13	LUMILUX Cool White	1 B	900	115	138	130	G24d-1	10/50	<b>010625</b>	A
DULUX D 13 W/830	13	LUMILUX Warm White	1 B	900	115	138	130	G24d-1	10/50	<b>025698</b>	A
DULUX D 13 W/827	13	LUMILUX INTERNA	1 B	900	115	138	130	G24d-1	10/50	<b>008127</b>	A
DULUX D 18 W/840	18	LUMILUX Cool White	1 B	1200	130	153	140	G24d-2	10/50	<b>012056</b>	B
DULUX D 18 W/830	18	LUMILUX Warm White	1 B	1200	130	153	140	G24d-2	10/50	<b>025704</b>	B
DULUX D 18 W/827	18	LUMILUX INTERNA	1 B	1200	130	153	140	G24d-2	10/50	<b>011462</b>	B
DULUX D 26 W/840	26	LUMILUX Cool White	1 B	1800	149	172	160	G24d-3	10/50	<b>012049</b>	B
DULUX D 26 W/830	26	LUMILUX Warm White	1 B	1800	149	172	160	G24d-3	10/50	<b>025711</b>	B
DULUX D 26 W/827	26	LUMILUX INTERNA	1 B	1800	149	172	160	G24d-3	10/50	<b>011912</b>	B

OSRAM DULUX® D 18W suitable only for operation with 0.22 A control gear.

## OSRAM DULUX® D/E – FOR ELECTRONIC CONTROL GEAR (ECG) AND FOR DIMMING

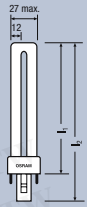


Dimensions in mm

Reference	Rated wattage (W)	Light color	Color rendering group	Luminous flux (lm)	Length l <sub>1</sub> max. (mm)	Length l <sub>2</sub> max. (mm)	Length to IEC l <sub>1</sub> max. (mm)	Base	Standard pack (pcs.)	EAN 4050300...	Energy label
<b>OSRAM DULUX® D/E</b> for operation with QUICKTRONIC® ECG											
DULUX D/E 10 W/840	10	LUMILUX Cool White	1 B	600	87	103	95	G24q-1	10	<b>017587</b>	A
DULUX D/E 10 W/830	10	LUMILUX Warm White	1 B	600	87	103	95	G24q-1	10	<b>419435</b>	A
DULUX D/E 10 W/827	10	LUMILUX INTERNA	1 B	600	87	103	95	G24q-1	10	<b>012124</b>	A
DULUX D/E 13 W/840	13	LUMILUX Cool White	1 B	900	115	131	130	G24q-1	10	<b>017594</b>	A
DULUX D/E 13 W/830	13	LUMILUX Warm White	1 B	900	115	131	130	G24q-1	10	<b>389059</b>	A
DULUX D/E 13 W/827	13	LUMILUX INTERNA	1 B	900	115	131	130	G24q-1	10	<b>012131</b>	A
DULUX D/E 18 W/840	18	LUMILUX Cool White	1 B	1200	130	146	140	G24q-2	10	<b>017617</b>	A
DULUX D/E 18 W/830	18	LUMILUX Warm White	1 B	1200	130	146	140	G24q-2	10	<b>327211</b>	A
DULUX D/E 18 W/827	18	LUMILUX INTERNA	1 B	1200	130	146	140	G24q-2	10	<b>012148</b>	A
DULUX D/E 26 W/840	26	LUMILUX Cool White	1 B	1800	149	165	160	G24q-3	10	<b>020303</b>	B
DULUX D/E 26 W/830	26	LUMILUX Warm White	1 B	1800	149	165	160	G24q-3	10	<b>327235</b>	B
DULUX D/E 26 W/827	26	LUMILUX INTERNA	1 B	1800	149	165	160	G24q-3	10	<b>012230</b>	B

勝特力材料 886-3-5753170  
 勝特力电子(上海) 86-21-54151736  
 勝特力电子(深圳) 86-755-83298787  
[Http://www.100y.com.tw](http://www.100y.com.tw)

## OSRAM DULUX® S – FOR CONVENTIONAL CONTROL GEAR (CCG)



25 W		→	5 W	
40 W		→	7 W	
60 W		→	9 W	
75 W		→	11 W	



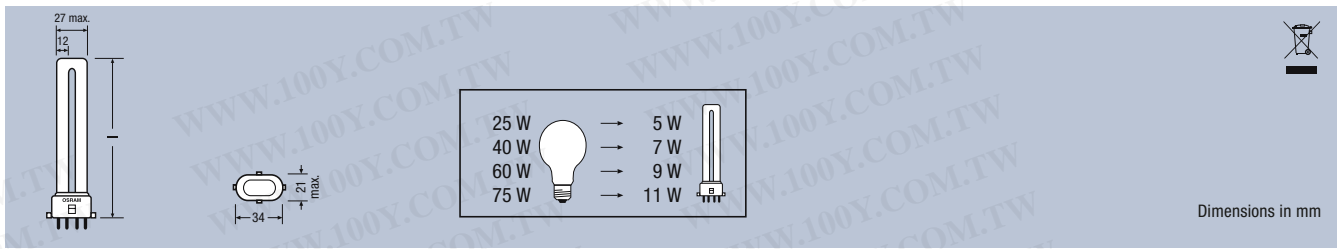
Dimensions in mm

Reference	Rated wattage (W)	Light color	Color rendering group	Luminous flux (lm)	Length l <sub>1</sub> max. (mm)	Length l <sub>2</sub> max. (mm)	Length to IEC l <sub>1</sub> max. (mm)	Base	Standard pack (pcs.)	EAN 4050300...	Energy label
<b>OSRAM DULUX® S LUMILUX®</b> for operation with CCGs											
DULUX S 5 W/840	5	LUMILUX Cool White	1 B	250	85	108	85	G23	10/50	010564	B
DULUX S 5 W/830	5	LUMILUX Warm White	1 B	250	85	108	85	G23	10/50	025728	B
DULUX S 5 W/827	5	LUMILUX INTERNA	1 B	250	85	108	85	G23	10/50	006130	B
DULUX S 7 W/865	7	LUMILUX Cool Daylight	1 B	375	114	137	115	G23	50	355306	B
DULUX S 7 W/840	7	LUMILUX Cool White	1 B	400	114	137	115	G23	10/50	010571	B
DULUX S 7 W/830	7	LUMILUX Warm White	1 B	400	114	137	115	G23	10/50	025735	B
DULUX S 7 W/827	7	LUMILUX INTERNA	1 B	400	114	137	115	G23	10/50	005997	B
DULUX S 7 W/827 EBLI <sup>1</sup>	7	LUMILUX INTERNA	1 B	400	114	137	115	G23	10 <sup>1</sup>	401270	B
DULUX S 9 W/865	9	LUMILUX Cool Daylight	1 B	565	144	167	145	G23	50	355320	A
DULUX S 9 W/840	9	LUMILUX Cool White	1 B	600	144	167	145	G23	10/50	010588	A
DULUX S 9 W/830	9	LUMILUX Warm White	1 B	600	144	167	145	G23	10/50	025742	A
DULUX S 9 W/827	9	LUMILUX INTERNA	1 B	600	144	167	145	G23	10/50	006000	A
DULUX S 9 W/827 EBLI <sup>1</sup>	9	LUMILUX INTERNA	1 B	600	144	167	145	G23	10 <sup>1</sup>	401294	A
DULUX S 11 W/865	11	LUMILUX Cool Daylight	1 B	850	214	237	215	G23	50	112374	A
DULUX S 11 W/840	11	LUMILUX Cool White	1 B	900	214	237	215	G23	10/50	010618	A
DULUX S 11 W/830	11	LUMILUX Warm White	1 B	900	214	237	215	G23	10/50	025759	A
DULUX S 11 W/827	11	LUMILUX INTERNA	1 B	900	214	237	215	G23	10/50	006017	A
DULUX S 11 W/827 EBLI <sup>1</sup>	11	LUMILUX INTERNA	1 B	900	214	237	215	G23	10 <sup>1</sup>	401355	A
<b>OSRAM DULUX® S COLOURED</b> for operation with CCGs											
DULUX S 9 W/60	9	Red		400	144	167	145	G23	10	015927	
DULUX S 9 W/66	9	Green		800	144	167	145	G23	10	015934	
DULUX S 9 W/67	9	Blue		200	144	167	145	G23	10	015941	

<sup>1</sup> Cardboard single-material blister pack

勝特力材料 886-3-5753170  
 勝特力电子(上海) 86-21-54151736  
 勝特力电子(深圳) 86-755-83298787  
[Http://www.100y.com.tw](http://www.100y.com.tw)

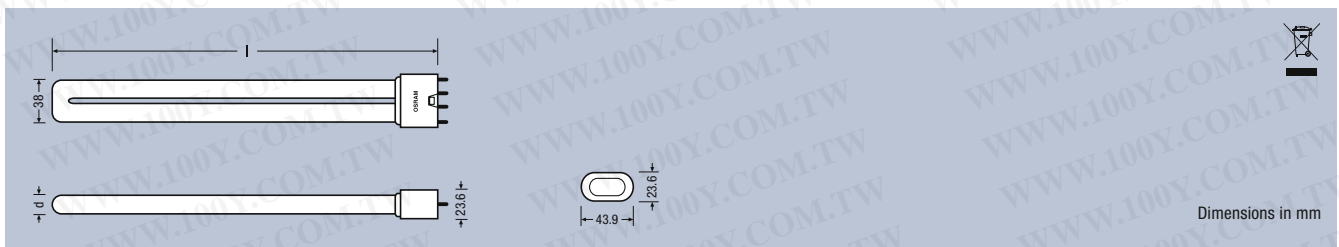
## OSRAM DULUX® S/E – FOR ELECTRONIC CONTROL GEAR (ECG)



Dimensions in mm

Reference	Rated wattage (W)	Light color	Color rendering group	Lumi- nous flux (lm)	Length l max. (mm)	Length to IEC l max. (mm)	Base	Stand- ard pack (pcs.)	EAN 4050300...	Energy label
<b>OSRAM DULUX® S/E</b> for operation with QUICKTRONIC® ECG and dimming										
DULUX S/E 5 W/840	5	LUMILUX Cool White	1 B	250	85	85	2G7	10	<b>020150</b>	A
DULUX S/E 5 W/827	5	LUMILUX INTERNA	1 B	250	85	85	2G7	10	<b>017624</b>	A
DULUX S/E 7 W/840	7	LUMILUX Cool White	1 B	400	114	115	2G7	10	<b>020167</b>	A
DULUX S/E 7 W/830	7	LUMILUX Warm White	1 B	400	114	115	2G7	10	<b>591988</b>	A
DULUX S/E 7 W/827	7	LUMILUX INTERNA	1 B	400	114	115	2G7	10	<b>017648</b>	A
DULUX S/E 9 W/840	9	LUMILUX Cool White	1 B	600	144	145	2G7	10	<b>020174</b>	A
DULUX S/E 9 W/830	9	LUMILUX Warm White	1 B	600	144	145	2G7	10	<b>589398</b>	A
DULUX S/E 9 W/827	9	LUMILUX INTERNA	1 B	600	144	145	2G7	10	<b>017655</b>	A
DULUX S/E 11 W/840	11	LUMILUX Cool White	1 B	900	214	215	2G7	10	<b>020181</b>	A
DULUX S/E 11 W/830	11	LUMILUX Warm White	1 B	900	214	215	2G7	10	<b>589374</b>	A
DULUX S/E 11 W/827	11	LUMILUX INTERNA	1 B	900	214	215	2G7	10	<b>017662</b>	A

## OSRAM DULUX® L SP – FOR CONVENTIONAL AND ELECTRONIC CONTROL GEAR (CCG AND ECG)

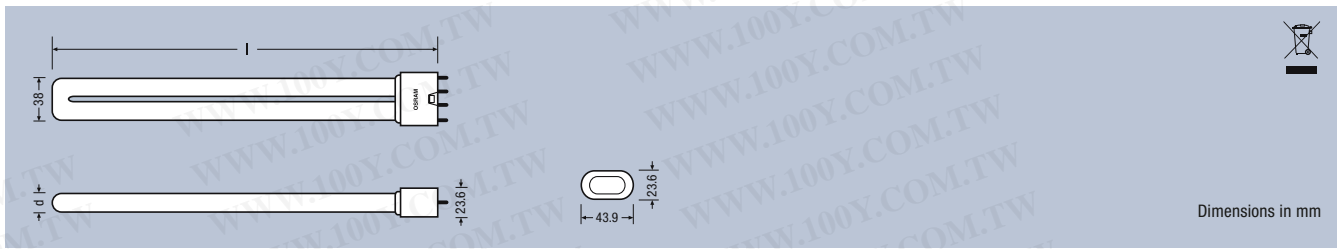


Dimensions in mm

Reference	Rated wattage (W)	Light color	Color rendering group	Lumi- nous flux (lm)	Length l max. (mm)	Length to IEC l max. (mm)	Tube diam- eter d (mm)	Base	Stand- ard pack (Stück)	EAN 4050300...	Energy label
<b>OSRAM DULUX® L SP</b> for operation with CCG and ECG											
DULUX L 18 W/830 SP	18	LUMILUX Warm White	1 B	1200	209	225	17.5	2G11	10	<b>300276</b>	B
DULUX L 24 W/830 SP	24	LUMILUX Warm White	1 B	1800	309	320	17.5	2G11	10	<b>300238</b>	B

勝特力材料 886-3-5753170  
 勝特力电子(上海) 86-21-54151736  
 勝特力电子(深圳) 86-755-83298787  
[Http://www.100y.com.tw](http://www.100y.com.tw)

## OSRAM DULUX® L – FOR CONVENTIONAL AND ELECTRONIC CONTROL GEAR (CCG AND ECG)



Reference	Rated wattage (W)	Light color	Color rendering group	Luminous flux (lm)	Length l max. (mm)	Length to IEC l max. (mm)	Tube diameter d (mm)	Base	Standard-pack (pcs.)	EAN 4050300...	Energy label
<b>OSRAM DULUX® L LUMILUX®</b> for operation with CCG and ECG											
DULUX L 18 W/840	18	LUMILUX Cool White	1 B	1200	217	225	17.5	2G11	10	010724	B
DULUX L 18 W/830	18	LUMILUX Warm White	1 B	1200	217	225	17.5	2G11	10	010731	B
DULUX L 18 W/827	18	LUMILUX INTERNA	1 B	1200	217	225	17.5	2G11	10	010748	B
DULUX L 24 W/840	24	LUMILUX Cool White	1 B	1800	317	320	17.5	2G11	10	010755	B
DULUX L 24 W/830	24	LUMILUX Warm White	1 B	1800	317	320	17.5	2G11	10	010762	B
DULUX L 24 W/827	24	LUMILUX INTERNA	1 B	1800	317	320	17.5	2G11	10	010779	B
DULUX L 36 W/865	36	LUMILUX Cool Daylight	1 B	2750	411	415	17.5	2G11	10	328263	B
DULUX L 36 W/840	36	LUMILUX Cool White	1 B	2900	411	415	17.5	2G11	10	010786	A
DULUX L 36 W/830	36	LUMILUX Warm White	1 B	2900	411	415	17.5	2G11	10	010793	A
DULUX L 36 W/827	36	LUMILUX INTERNA	1 B	2900	411	415	17.5	2G11	10	010809	A
DULUX L 40 W/865 <sup>1</sup>	40	LUMILUX Cool Daylight	1 B	3325	533	535	17.5	2G11	10	592008	B
DULUX L 40 W/840 <sup>1</sup>	40	LUMILUX Cool White	1 B	3500	533	535	17.5	2G11	10	279909	A
DULUX L 40 W/830 <sup>1</sup>	40	LUMILUX Warm White	1 B	3500	533	535	17.5	2G11	10	298894	A
DULUX L 40 W/827 <sup>1</sup>	40	LUMILUX INTERNA	1 B	3500	533	535	17.5	2G11	10	322285	A
DULUX L 55 W/865 <sup>1</sup>	55	LUMILUX Cool Daylight	1 B	4550	533	535	17.5	2G11	10	553900	B
DULUX L 55 W/840 <sup>1</sup>	55	LUMILUX Cool White	1 B	4800	533	535	17.5	2G11	10	295879	A
DULUX L 55 W/830 <sup>1</sup>	55	LUMILUX Warm White	1 B	4800	533	535	17.5	2G11	10	298917	A
DULUX L 55 W/827 <sup>1</sup>	55	LUMILUX INTERNA	1 B	4800	533	535	17.5	2G11	10	315881	A
DULUX L 80 W/830 <sup>1</sup>	80	LUMILUX Warm White	1 B	6000	565	568	17.5	2G11	10	665467	B
DULUX L 80 W/840 <sup>1</sup>	80	LUMILUX Cool White	1 B	6000	565	568	17.5	2G11	10	665481	B

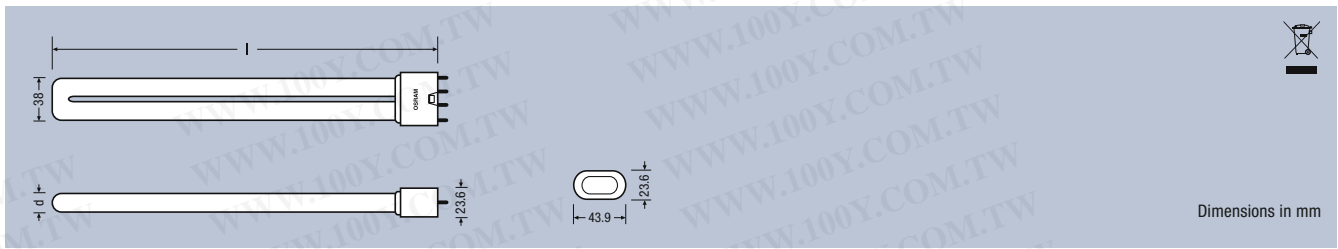
### OSRAM DULUX® L LUMILUX® DE LUXE for operation with CCG and ECG

DULUX L 18 W/954	18	LUMILUX DE LUXE Daylight	1 A	750	217	225	17.5	2G11	10	018423	B
DULUX L 18 W/940	18	LUMILUX DE LUXE Cool White	1 A	750	217	225	17.5	2G11	10	018560	B
DULUX L 18 W/930	18	LUMILUX DE LUXE Warm White	1 A	750	217	225	17.5	2G11	10	018324	B
DULUX L 24 W/954	24	LUMILUX DE LUXE Daylight	1 A	1200	317	320	17.5	2G11	10	018447	B
DULUX L 24 W/940	24	LUMILUX DE LUXE Cool White	1 A	1200	317	320	17.5	2G11	10	018584	B
DULUX L 24 W/930	24	LUMILUX DE LUXE Warm White	1 A	1200	317	320	17.5	2G11	10	018386	B
DULUX L 36 W/954	36	LUMILUX DE LUXE Daylight	1 A	1900	411	415	17.5	2G11	10	018461	B
DULUX L 36 W/940	36	LUMILUX DE LUXE Cool White	1 A	1900	411	415	17.5	2G11	10	018607	B
DULUX L 36 W/930	36	LUMILUX DE LUXE Warm White	1 A	1900	411	415	17.5	2G11	10	018393	B
DULUX L 40 W/954 <sup>1</sup>	40	LUMILUX DE LUXE Daylight	1 A	2200	533	535	17.5	2G11	10	315799	B
DULUX L 55 W/954 <sup>1</sup>	55	LUMILUX DE LUXE Daylight	1 A	3000	533	535	17.5	2G11	10	321400	B
DULUX L 55 W/940 <sup>1</sup>	55	LUMILUX DE LUXE Cool White	1 A	3000	533	535	17.5	2G11	10	197999	B
DULUX L 55 W/930 <sup>1</sup>	55	LUMILUX DE LUXE Warm White	1 A	3000	533	535	17.5	2G11	10	370705	B

<sup>1</sup> For ECG operation only

勝特力材料 866-3-5753170  
 勝特力电子(上海) 86-21-54151736  
 勝特力电子(深圳) 86-755-83298787  
[Http://www.100y.com.tw](http://www.100y.com.tw)

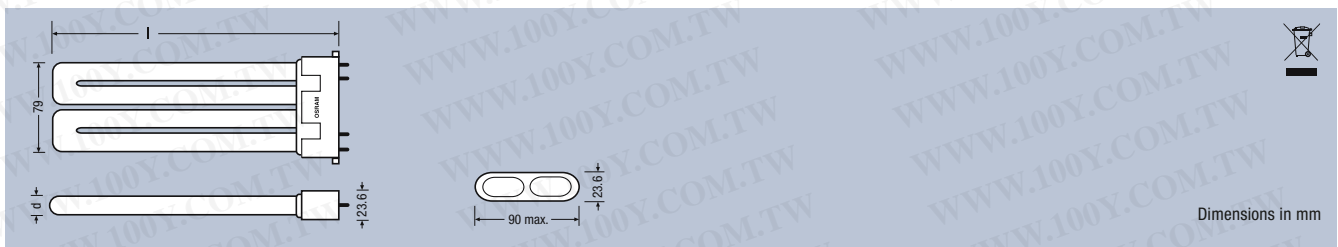
## OSRAM DULUX® L CONSTANT – FOR ELECTRONIC CONTROL GEAR (ECG)



Dimensions in mm

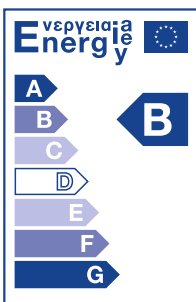
Reference	Rated wattage (W)	Light color	Color rendering group	Luminous flux (lm)	Length l max. (mm)	Length to IEC l max. (mm)	Tube diameter d (mm)	Base	Standard pack (pcs.)	EAN	Energy label
<b>OSRAM DULUX® L CONSTANT</b> for operation with ECG										4008321...	
DULUX L CONSTANT 40 W	40	LUMILUX Cool White	1 B	3500	533	535	17.5	2G11	10	<b>104823</b>	A
DULUX L CONSTANT 55 W	55	LUMILUX Cool White	1 B	4800	533	535	17.5	2G11	10	<b>104847</b>	A
DULUX L CONSTANT 80 W	80	LUMILUX Cool White	1 B	6000	565	568	17.5	2G11	10	<b>104861</b>	B

## OSRAM DULUX® F – FOR CONVENTIONAL AND ELECTRONIC CONTROL GEAR (CCG AND ECG)



Dimensions in mm

Reference	Rated wattage (W)	Light color	Color rendering group	Luminous flux (lm)	Length l max. (mm)	Length to IEC l max. (mm)	Tube diameter d (mm)	Base	Standard pack (pcs.)	EAN	Energy label
<b>OSRAM DULUX® F</b> for operation with CCG and ECG										4050300...	
DULUX F 18 W/-840	18	LUMILUX Cool White	1 B	1100	122	122	17.5	2G10	10	<b>333526</b>	B
DULUX F 18 W/-830	18	LUMILUX Warm White	1 B	1100	122	122	17.5	2G10	10	<b>333540</b>	B
DULUX F 18 W/-827	18	LUMILUX INTERNA	1 B	1100	122	122	17.5	2G10	10	<b>333564</b>	B
DULUX F 24 W/-840	24	LUMILUX Cool White	1 B	1700	165	165	17.5	2G10	10	<b>333588</b>	B
DULUX F 24 W/-830	24	LUMILUX Warm White	1 B	1700	165	165	17.5	2G10	10	<b>333601</b>	B
DULUX F 24 W/-827	24	LUMILUX INTERNA	1 B	1700	165	165	17.5	2G10	10	<b>333625</b>	B
DULUX F 36 W/-840	36	LUMILUX Cool White	1 B	2800	217	217	17.5	2G10	10	<b>299037</b>	B
DULUX F 36 W/-830	36	LUMILUX Warm White	1 B	2800	217	217	17.5	2G10	10	<b>299051</b>	B
DULUX F 36 W/-827	36	LUMILUX INTERNA	1 B	2800	217	217	17.5	2G10	10	<b>312187</b>	B



### Energy label for lamps:

Since January 1, 2001 a uniform system for indicating the energy-efficient class on a scale from A (very efficient) to G (inefficient) on a precisely defined Energy Label has been in place also for domestic lamps. The label must also indicate the luminous flux, wattage and possibly also the average life of the lamp. The Energy Label must be displayed on packaging. In catalogues and other print material used to promote sales a purely verbal statement of the relevant information is a possible alternative.

勝特力材料 886-3-5753170  
 勝特力电子(上海) 86-21-54151736  
 勝特力电子(深圳) 86-755-83298787  
[Http://www.100y.com.tw](http://www.100y.com.tw)

## TECHNICAL DATA

Lamp OSRAM DULUX® Wattage	Lamp voltage at 50/60 Hz		Lamp current at 50/60 Hz		System wattage CCG operation <sup>1</sup>		ECG reference <sup>2</sup>	Lumi- nance cd/cm <sup>2</sup> LC 827, 830, 840	Compensation	
	50/60 Hz (V)	HF operation (V)	50/60 Hz (mA)	HF operation (mA)	operation <sup>1</sup> (W)	operation (W)			Parallel capacitor <sup>3</sup> CCG operation 230V/50 Hz, µF	Series capacitor <sup>4</sup> CCG operation µF
DULUX S 5	35	–	180	–	10	–	–	2.5	2.2	–
DULUX S 7	47/45	–	175/180	–	11	–	–	2.6	2.1	–
DULUX S 9	60/59	–	170/180	–	13	–	–	2.8	2.0	–
DULUX S 11	91/–	–	155/–	–	15	–	–	2.7	1.7	–
DULUX D 10	64	–	190	–	15	–	–	4.0	2.2	1.4
DULUX D 13	91	–	175	–	17	–	–	4.0	1.8	1.4
DULUX D 18	100	–	220	–	23	–	–	4.5	2.2	1.7
DULUX D 26	105	–	325	–	31	–	–	5.5	3.2	2.5
DULUX T 13 PLUS	91	–	175	–	17	–	–	4.2	1.8	1.4
DULUX T 18 PLUS	100	–	225	–	23	–	–	4.7	2.3	1.7
DULUX T 26 PLUS	105	–	325	–	31	–	–	6.0	3.3	2.5
DULUX S/E 5	–	27	–	190	–	7.5	QT-ECO 1x4-16/220-240	2.5	–	–
DULUX S/E 7	–	37	–	175	–	9	QT-ECO 1x4-16/220-240	2.6	–	–
DULUX S/E 9	–	48	–	170	–	12	QT-D/E 1x9-13/230-240* <sup>5</sup>	2.8	–	–
DULUX S/E 11	–	75	–	150	–	14	QT-D/E 1x9-13/230-240* <sup>5</sup>	2.7	–	–
DULUX D/E 10	–	51	–	190	–	12	QT-D/E 1x9-13/230-240* <sup>5</sup>	4.0	–	–
DULUX D/E 13	–	77	–	165	–	15	QT-D/E 1x9-13/230-240* <sup>5</sup>	4.0	–	–
DULUX D/E 18	–	80	–	210	–	20	QT-T/E 1x18/230-240* <sup>5</sup>	4.5	–	–
DULUX D/E 26	–	80	–	300	–	27	QT-M 1x26-42/230-240*	5.5	–	–
DULUX T/E 13 PLUS	–	77	–	165	–	15	QT-D/E 1x9-13/230-240* <sup>5</sup>	4.2	–	–
DULUX T/E 18 PLUS	–	80	–	210	–	20	QT-T/E 1x18/230-240* <sup>5</sup>	4.7	–	–
DULUX T/E 26 PLUS	–	80	–	300	–	27	QT-M 1x26-42/230-240*	6.0	–	–
DULUX T/E 32 PLUS	–	100	–	320	–	35	QT-M 1x26-42/230-240*	6.5	–	–
DULUX T/E 42 PLUS	–	135	–	320	–	46	QT-M 1x26-42/230-240*	7.0	–	–
DULUX L 18	58	50	375	320	24	18	QTP-DL 1x18-24*	2.1	4.2	2.7
DULUX L 24	87	75	345	300	30	26	QTP-DL 1x18-24*	2.1	3.6	2.7
DULUX L 36	106	90	435	360	43	35	QTP-DL 1x36-40*	2.8	4.4	3.4
DULUX L 40	–	126	–	320	–	45	QTP-DL 1x36-40*	2.3	–	–
DULUX L 55	–	101	–	550	–	59	QTP-DL 1x55*	3.2	–	–
DULUX L 80	–	145	–	555	–	88	QT-FQ 1x80/230-240 <sup>6</sup>	3.7	–	–
DULUX L CONSTANT 40	–	126	–	320	–	45	QTP-DL 1x36-40*	2.3	–	–
DULUX L CONSTANT 55	–	101	–	550	–	59	QTP-DL 1x55*	3.2	–	–
DULUX L CONSTANT 80	–	145	–	555	–	88	QT-FQ 1x80/230-240 <sup>6</sup>	3.7	–	–
DULUX 120 W HO CONSTANT	–	153	–	800	–	134	QTi 1x26-120	7.0	–	–
DULUX F 18	58	50	375	320	24	18	QTP-DL 1x18-24*	2.4	4.2	2.7
DULUX F 24	87	75	345	300	29	26	QTP-DL 1x18-24*	2.5	3.6	2.7
DULUX F 36	106	90	435	360	43	35	QTP-DL 1x36-40*	3.0	4.4	3.4

\* ECG also available in two-lamp version. For detailed technical information see the "Technical Guides".

<sup>1</sup> Approximate values for low-loss control gear – depending on the control gear

<sup>2</sup> Other OSRAM ECGs for OSRAM DULUX® lamps (QUICKTRONIC® multi-lamp, QUICKTRONIC® DIM and DULUXTRONIC®) are listed in the OSRAM Lighting Program.

<sup>3</sup> Design for cos phi = 0.95, dielectric strength of the capacitors 250Vac, capacitance tolerance ± 10 %

<sup>4</sup> To maintain the specified operating and preheating values, close-tolerance capacitors (± 2 %) and series reactors (± 1,5 %) are required for series compensation. Check the product ranges of leading manufacturers. Dielectric strength of the capacitors 450Vac

<sup>5</sup> QTP-D/E 1x10-13 scheduled to be available from September 07

QTP-D/E 2x10-13 scheduled to be available from September 07

QTP-T/E 1x18 scheduled to be available from November 07

QTP-T/E 2x18 scheduled to be available from November 07

<sup>6</sup> 2-lamp version: QT-FQ 2x80/230-240

**勝特力材料 886-3-5753170**  
**勝特力电子(上海) 86-21-54151736**  
**勝特力电子(深圳) 86-755-83298787**  
[Http://www.100y.com.tw](http://www.100y.com.tw)