



Protistor® Square-body Fuses NH Plain Blades - 690 VAC gR - 690 VAC sizes 000 to 3 (full range)

勝特力材料 886-3-5753170
勝特力电子(上海) 86-21-34970699
勝特力电子(深圳) 86-755-83298787
[Http://www.100y.com.tw](http://www.100y.com.tw)

Ferraz Shawmut PROTISTOR® NH gRB 690 VAC fuse-links provide maximum flexibility in equipment design and ultimate protection for today's power conversion equipment. This range is a full range, engineered to provide state of the art protection for power semiconductor such as diodes, thyristors, triacs.

These square body fuse-links are available in various body sizes with a broad range of ampere ratings allowing the greatest flexibility in equipment design.

They have pure silver fuse elements which provides optimized I^2t and high breaking capacity. All contact surfaces are silver plated and all hardware non-magnetic.

All fuses are standard with a low voltage dual blown fuse indicator. This indicator can operate a microswitch which is easily mounted directly on to the fuse in service.



Features/Benefits

Broad range of ampere ratings in each body size for design flexibility

IEC 60269-1 and 4 compliance for fuses for worldwide semiconductor applications

Ratings

AC: up to 800 A
690 VAC
80-170 kA IR
DC: Consult Factory

Approvals

AC: Tested to IEC 60269-1 and 4

Features

- Full range fast acting
- Highly current limiting.
- High breaking capacities
- Low I^2t
- Worldwide mounting acceptance.
- Superior cycling ability.
- High withstanding in rush current and overloads

Applications

Protection of rectifiers, inverters, static switch, AC & DC drives and UPS systems.



Beige melted



Red non melted

Innovations

- Double indicator (Visual and mechanical).
- Largest range of the market
- Connexion improvement between trip indicator - Micro switch
- Cd / Pb free
- Low voltage indicator - 50V

Semiconductor (AC) fuses

Protistor® Square-body Fuses NH Plain Blades - 690 VAC gR - 690 VAC sizes 000 to 3 (full range)

Voltage	Size	Type	Rating In (A)	Pre-Arcing I ² t @ 1ms (A ² s)	Total I ² t @ 690 V kA ² s	Pn: Power losses (W) PV 43620 0,8In	Breaking capacities @ Un (kA)
690 V	000	gRB	16				
		gRB	20				
		gRB	25				
		gRB	32				
		gRB	40				
		gRB	50				
		gRB	63				
		gRB	80				
		gRB	100				
		gRB	125				
690 V	00	gRB	20				
		gRB	25				
		gRB	32				
		gRB	40				
		gRB	50				
		gRB	63				
		gRB	80				
		gRB	100				
		gRB	125				
		gRB	160				
690 V	0	gRB	200				
		gRB	32				
		gRB	40				
		gRB	50				
		gRB	63				
		gRB	80				
		gRB	100				
		gRB	125				
		gRB	160				
		gRB	200				

Consult us

Time/current characteristics
Cut off characteristics
Total I²t and total operating time
Other curves
Fuse holder derating

} Consult us

Semiconductor (AC) fuses

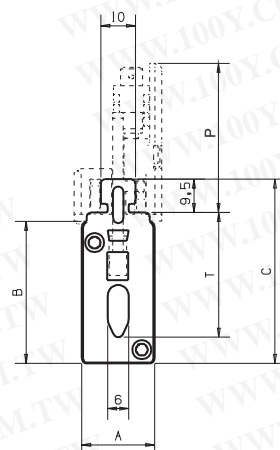
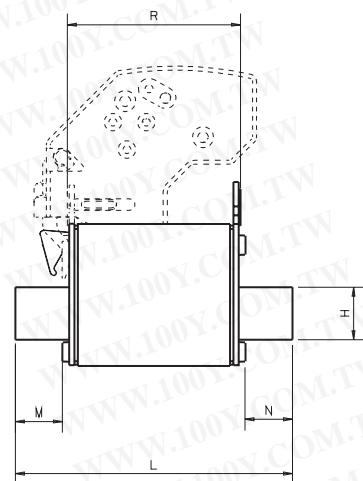


Protistor® Square-body Fuses NH Plain Blades - 690 VAC gR - 690 VAC sizes 000 to 3 (full range)

Voltage	Size	Type	Rating In (A)	Pre-Arcing I ² t @ 1ms (A ² s)	Total I ² t @ 690 V kA ² s	Pn: Power losses (W) PV 43620 0,8In	Breaking capacities @ Un (kA)
690 V	16	gRB	63				
		gRB	80				
	1	gRB	100				
		gRB	125				
		gRB	160				
		gRB	200				
		gRB	250				
		gRB	315				
690 V	2	gRB	350	Consult US			
		gRB	160				
		gRB	200				
		gRB	250				
		gRB	315				
		gRB	350				
		gRB	400				
		gRB	450				
690 V	3	gRB	500				
		gRB	315				
		gRB	350				
		gRB	400				
		gRB	450				
		gRB	500				
		gRB	560				
		gRB	630				
gRB	700						
gRB	800						

Protistor® Square-body Fuses NH Plain Blades - 690 VAC gR - 690 VAC sizes 000 to 3 (full range)

Size	Designation	Reference Number	Catalog Number	Weight	Pack. (g)
000	6,9 gRB 000 PV 0016	N322035	NH000GB69V16PV	135	3
	6,9 gRB 000 PV 0020	Q322037	NH000GB69V20PV		
	6,9 gRB 000 PV 0025	S322039	NH000GB69V25PV		
	6,9 gRB 000 PV 0032	X322043	NH000GB69V32PV		
	6,9 gRB 000 PV 0040	B322047	NH000GB69V40PV		
	6,9 gRB 000 PV 0050	F322051	NH000GB69V50PV		
	6,9 gRB 000 PV 0063	K322055	NH000GB69V63PV		
	6,9 gRB 000 PV 0080	P322059	NH000GB69V80PV		
	6,9 gRB 000 PV 0100	T322063	NH000GB69V100PV		
	6,9 gRB 000 PV 0125	W322065	NH000GB69V125PV		
	Neutral	Z218269	NH00NEUTRAL		10
	Extraction puller	P215592	NHHANDLE		1
00	6,9 gRB 00 PV 0020	Z322137	NH00GB69V20PV	200	3
	6,9 gRB 00 PV 0025	B322139	NH00GB69V25PV		
	6,9 gRB 00 PV 0032	F322143	NH00GB69V32PV		
	6,9 gRB 00 PV 0040	K322147	NH00GB69V40PV		
	6,9 gRB 00 PV 0050	P322151	NH00GB69V50PV		
	6,9 gRB 00 PV 0063	T322155	NH00GB69V63PV		
	6,9 gRB 00 PV 0080	Y322159	NH00GB69V80PV		
	6,9 gRB 00 PV 0100	C322163	NH00GB69V100PV		
	6,9 gRB 00 PV 0125	E322165	NH00GB69V125PV		
	6,9 gRB 00 PV 0160	J322169	NH00GB69V160PV		
6,9 gRB 00 PV 0200	L322171	NH00GB69V200PV			
	Neutral	Z218269	NH00NEUTRAL		10
	Extraction puller	P215592	NHHANDLE		1
0	6,9 gRB 0 PV 0032	P322243	NH0GB69V32PV	250	3
	6,9 gRB 0 PV 0040	T322247	NH0GB69V40PV		
	6,9 gRB 0 PV 0050	Y322251	NH0GB69V50PV		
	6,9 gRB 0 PV 0063	C322255	NH0GB69V63PV		
	6,9 gRB 0 PV 0080	G322259	NH0GB69V80PV		
	6,9 gRB 0 PV 0100	L322263	NH0GB69V100PV		
	6,9 gRB 0 PV 0125	N322265	NH0GB69V125PV		
	6,9 gRB 0 PV 0160	S322269	NH0GB69V160PV		
	6,9 gRB 0 PV 0200	V322271	NH0GB69V200PV		
	6,9 gRB 0 PV 0250	Z322275	NH0GB69V250PV		
	Neutral	Z219304	NH0NEUTRAL		10
	Extraction puller	P215592	NHHANDLE		1



Microswitches

MS 4L 2-5 B6 + PRES	F210156	(6,3mm clips)
MS 4L 2-5 B2 + PRES	G210157	(2.8 mm clips)

Automatically resettable, these microswitch systems indicate fuse presence (PRES) and proper mounting
In case of improper mounting or fuse melting, this is indicated (terminal 1-4 closed)

Microswitches supplied separately

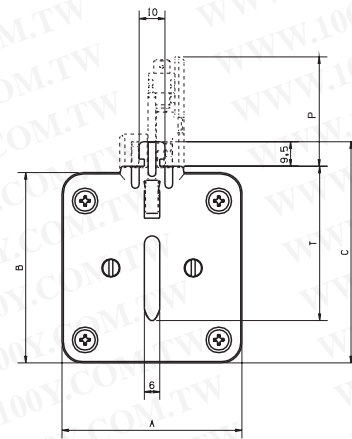
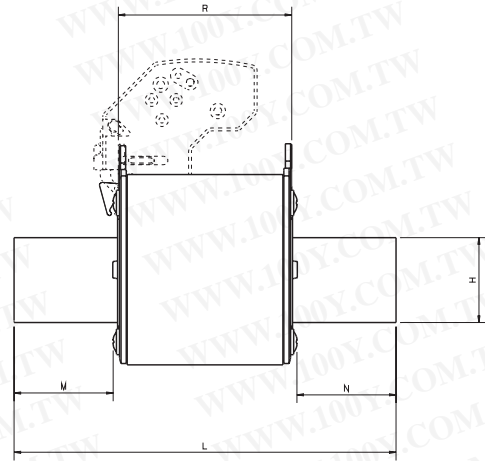
Size	A	B	C	H	L	M	N	P	R	T
000	20,8	40,5	52,5	15	79	13,5	13,5	43,4	49,5	35
	0.82"	1.59"	2.07"	0.59"	3.11"	0.53"	0.53"	1.71"	1.95"	1.38"
00	29,5	47,5	59,5	15	79	13,1	13,1	43,4	50	35
	1.16"	1.87"	2.34"	0.59"	3.11"	0.52"	0.52"	1.71"	1.97"	1.38"
0	29,5	47,5	59,5	15	125	29,1	29,1	43,4	66	35
	1.16"	1.87"	2.34"	0.59"	4.92"	1.15"	1.15"	1.71"	2.60"	1.38"

Fuse holder solution, see gear and Fuse gear section



Protistor® Square-body Fuses NH Plain Blades - 690 VAC gR - 690 VAC sizes 000 to 3 (full range)

Size	Designation	Reference Number	Catalog Number	Weight	Pack. (g)		
1	6,9 gRB 1 PV 0063	L322355	NH1GB69V63VP	430	3		
	6,9 gRB 1 PV 0080	J322399	NH1GB69V80PV				
	6,9 gRB 1 PV 0100	V322363	NH1GB69V100PV				
	6,9 gRB 1 PV 0125	X322365	NH1GB69V125PV				
	6,9 gRB 1 PV 0160	B322369	NH1GB69V160PV				
	6,9 gRB 1 PV 0200	D322371	NH1GB69V200PV				
	6,9 gRB 1 PV 0250	H322375	NH1GB69V250PV				
	6,9 gRB 1 PV 0315	M322379	NH1GB69V315PV				
	6,9 gRB 1 PV 0350	N322380	NH1GB69V350PV				
	Neutral	A219834	NH1NEUTRAL			10	
	Extraction puller	P215592	NHHANDLE	1			
2	6,9 gRB 2 PV 0160	K322469	NH2GB69V160PV	600	3		
	6,9 gRB 2 PV 0200	M322471	NH2GB69V200PV				
	6,9 gRB 2 PV 0250	R322475	NH2GB69V250PV				
	6,9 gRB 2 PV 0315	W322479	NH2GB69V315PV				
	6,9 gRB 2 PV 0350	X322480	NH2GB69V350PV				
	6,9 gRB 2 PV 0400	A322483	NH2GB69V400PV				
	6,9 gRB 2 PV 0450	C322485	NH2GB69V450PV				
	6,9 gRB 2 PV 0500	E322487	NH2GB69V500PV				
	Neutral	N222514	NH2NEUTRAL			10	
		Extraction puller	P215592			NHHANDLE	1
3	6,9 gRB 3 PV 0315	E322579	NH3GB69V315PV	750	3		
	6,9 gRB 3 PV 0350	F322580	NH3GB69V350PV				
	6,9 gRB 3 PV 0400	J322583	NH3GB69V400PV				
	6,9 gRB 3 PV 0450	L322585	NH3GB69V450PV				
	6,9 gRB 3 PV 0500	N322587	NH3GB69V500PV				
	6,9 gRB 3 PV 0550	P322588	NH3GB69V550PV				
	6,9 gRB 3 PV 0630	Q322589	NH3GB69V630PV				
	6,9 gRB 3 PV 0700	R322590	NH3GB69V700PV				
	6,9 gRB 3 PV 0850	S322591	NH3GB69V850PV				
	Neutral	E223035	NH3NEUTRAL			10	
	Extraction puller	P215592	NHHANDLE	1			



Microswitches

MS 4L 2-5 B6 + PRES	F210156	(6,3mm clips)
MS 4L 2-5 B2 + PRES	G210157	(2.8 mm clips)

Automatically resettable, these microswitch systems indicate fuse presence (PRES) and proper mounting
In case of improper mounting or fuse melting, this is indicated (terminal 1-4 closed)

Microswitches supplied separately

Size	A	B	C	H	L	M	N	P	R	T
1	39,5	52,5	64,5	20	135	32,1	32,1	43,4	68	40
	1.56"	2.07"	2.54"	0.79"	5.32"	1.26"	1.26"	1.71"	2.68"	1.57"
2	51	60	72	26	150	38,85	38,85	43,4	68	48
	2.01"	2.36"	2.85"	1.02"	5.91"	1.53"	1.53"	1.71"	2.68"	1.89"
3	70	74	86	33	150	38,85	38,85	43,4	68	60
	2.76"	2.91"	3.39"	1.30"	5.91"	1.53"	1.53"	1.71"	2.68"	2.36"

Fuse holder solution, see p.11

Protistor® Square-body Fuses NH Plain Blades - 690 VAC gR - 690 VAC sizes 000 to 3 (full range)

Fuse holders and switch-disconnector



Fuse holder
unprotect



Fuse holder
finger safe



Switch
Disconnector



Fuse switch
Disconnector
fast handle

Type	Characteristics	Poles	Size 000/00	Size 0	Size 1	Size 2	Size 3
Fuse holder	Unprotected (4) screw connection for hole and bar terminals for 35mm Din rail	1	R216192	T218241	A223008	E211075	X213644
		2	F218758	G218759	G200796	V211595	B214154
		3	V219277	W219278	Y201340	D212109	F214664
		4	Z223007	H222486	H201855	R212627	K215174
	Unprotected (4) screw connection for holes or bar terminals for panels	1	F215170	N216695	E218757	F201853	W213643
		2	A217212	B217213	F222484	S211593	D214662
		3	F217723	G217724	Y223006	B212107	H215172
		4	S219275	R218239	X201339	C213143	L215681
	Finger Safe Protected screw connection for hole and bar terminals for DIN rail	1	S218240	G226717	P226724	R226726	T226728
		3	G222485	J226719A	Q226725	S226727	V226729
Switch- disconnector	Horizontal Linocur AC23	1	N216626 N222882				
		2	B218685 C201781				
		3	Y212035 W213574				
Fused switch- disconnector front handle	ITCP 160 III ⁽⁴⁾	3	F210409				
	ITC 63 III complete ⁽⁵⁾	3	G210824				
	ITC 160 III complete ⁽⁵⁾	3	K227824				
	ITC 250 III complete ⁽⁵⁾	3			N210830 + Y210770 ⁽³⁾		
	ITC 400 III complete ⁽⁵⁾	3				Q210832 + Y210770 ⁽³⁾	
	ITC 630 III complete ⁽⁵⁾	3					P210831 + Y210770 ⁽³⁾ W229674 + Y210770 ⁽³⁾
ITC 800 III complete ⁽⁵⁾	3						

(1) Impossible to use microswitch

(2) The axis of operation must be fragmented if the heighten (Y210770A) is not used - Internal or external control.

(3) Necessary heighten for the use of microswitch (F210156C or G210157C)

(4) Unprotected against accidental contact-not finger safe

(5) Finger safe

Warning: for all holders, please check maximum fuse and fuse holder operating limit".

Protistor® Square-body Fuses PSC gR/aR sizes 000/00 Microswitches for PSC sizes 000/00 and NH

MICROSWITCH SYSTEMS ADAPTED TO THE FOLLOWING FUSES:

- PSC sizes 000/00 (brackets) DIN43653
- NH Fuses (plain blades) see details in "General Purpose IEC Fuses" section
- NH plain blades 690 VAC Protistor square-body Fuses

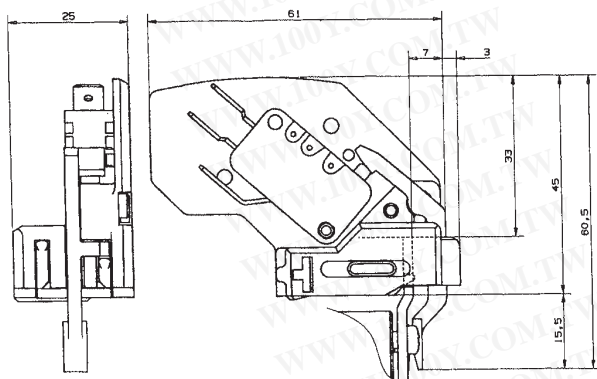
MS 4L 2-5



Main Characteristics

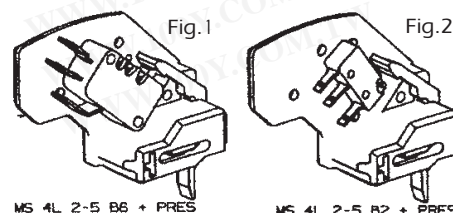
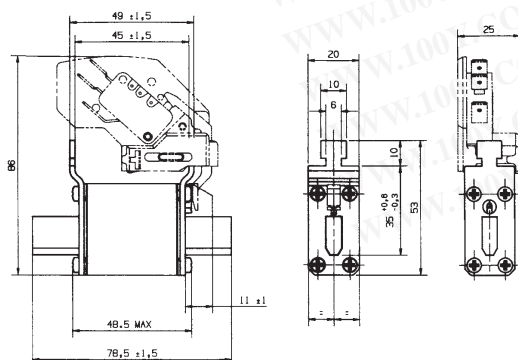
Code	AC Insulation voltage rating (***)	Positive operating voltage/current	Current rating	Current	Interrupting rating						AC voltage withstand test (*)	Impulse voltage test Uimp1.2/50 µs (**)	Fire class according to UL 94
					Non inductive circuit			Inductive circuit : L/R = 25ms					
					30V	110V	250V	30V	110V	250V			
MS 4L 2-5 B2 + Pres	1000 V	20 V 100 mA	5 A	50 Hz	4A	4A	5A	-	5A	5 A	12 kV	16 kV	V0
				DC	-	-	-	-	2 A	0,4 A	8 kV	13 kV	
MS 4L 2-5 B6 + Pres	1000 V	20 V 50 mA	10 A	50/60 Hz	10 A	10 A	10 A	10 A	10 A	10 A	8 kV	10 kV	V0
				DC	8 A	0,4 A	0,2 A	4 A	0,2 A	0,1 A			

- * Between power circuit and microswitch terminals as per IEC 60 and 694 and NFC 64010 (50/60 Hz 1 min duration in dry air)
- ** Between power circuit and microswitch terminals Uimp: impulse voltage as per IEC 60947-1
- *** Between power circuit and microswitch terminals



Designation	Ref. Number	Weight (g)	Pack.	Catalog Number
MS 4L 2-5 B6 + PRES (Fig. 1) (1)	F210156	30	3	MS 4L2-5B6PRES
MS 4L 2-5 B2 + PRES (Fig. 2) (2)	G210157	26	3	MS 4L2-5B2PRES

Automatically resettable, these microswitch systems indicate fuse presence (PRES) and proper mounting. In case of improper mounting or fuse melting, this is indicated (terminal 1-4 closed)

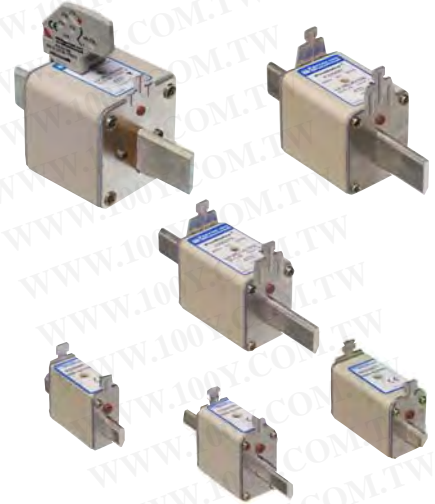


- (1) 6.3 mm clips
- (2) 2.8 mm clips



Protistor® 方体熔断器 NH平刀型熔断器 - 690 VAC gR - 690 VAC 尺寸 000 至 3(全范围保护)

对于现今的电力变频装置而言，法雷的PROTISTOR® NH gRB 690VAC熔断器不仅能够最大程度的适应其在设备设计环节中的变化，同时还为其提供最终的保护。该系列熔断器属于快速熔断型，被设计为电力半导体器件（如二极管、晶闸管）提供一种技术保护手段。这些方体熔断器具备不同的尺寸及较大的额定电流变化范围，从而为设备的设计提供了最大的延展空间。该系列熔断器的熔芯由纯银制成，且被紧固的石英砂包围，具备最佳的 I^2t 及分断能力。所有的接触端子均有镀银层，且无磁吸引力。根据标准，该系列熔断器均装有熔断指示器，当其动作时，可以触动安置于熔壳之上的微动开关发出熔断器熔断的指令信号。



特征/优势

对每一个尺寸的熔断器皆有较广的额定电流变化范围，从而为设备的设定提供了最大程度的延展空间。

遵循熔断器在半导体保护领域中的应用所制定的 IEC 60269-1/4标准。



熔断后呈褐色



未熔断时呈红色

额定值

AC: $\leq 800A$
690VAC
80-170 kA IR
DC: 请联络工厂

核准

AC: 符合IEC 60269-1/4的测试条件

特征

- 显著的快速动作特性
- 极高的限流特性
- 极高的分断能力
- 非常低的 I^2t
- 符合世界范围内的安装标准
- 超强的周期工作能力
- 较强的耐受冲击电流与过载的能力

应用

用于整流器、逆变器、静态开关、AC&DC电机及UPS系统的保护

革新

- 双指示器(可视化与机械传动)
- 非常广泛的市场应用
- 增强了熔断指示器与微动开关的连接
- Cd / Pb 免费
- 较低的熔断指示器动作电压-50V



半导体保护熔断器

Protistor® 方体熔断器

NH平刀型熔断器 - 690 VAC

gR - 690 VAC 尺寸 000 至 3 (全范围保护)

额定电压	尺寸	类型	额定电流 In (A)	弧前时间 It @ 1ms (A²s)	总的 I²t @ 690 V (kA²s)	Pn: 功率损耗 (W) PV 43620 0,8In	额定电压下的分断能力 (kA)
690 V	000	gRB	16				
		gRB	20				
		gRB	25				
		gRB	32				
		gRB	40				
		gRB	50				
		gRB	63				
		gRB	80				
		gRB	100				
690 V	00	gRB	125				
		gRB	20				
		gRB	25				
		gRB	32				
		gRB	40				
		gRB	50				
		gRB	63				
		gRB	80				
		gRB	100				
690 V	0	gRB	125				
		gRB	160				
		gRB	200				
		gRB	32				
		gRB	40				
		gRB	50				
		gRB	63				
		gRB	80				
		gRB	100				

请联系我们

时间/电流特性
截断特性
I²t 总值和熔断时间
其他曲线
熔断器底座的降额值

请联系我们

半导体保护熔断器 (AC)



Protistor® 方体熔断器

NH平刀型熔断器 - 690 VAC

gR - 690 VAC 尺寸 000 至 3 (全范围保护)

额定电压	尺寸	类型	额定电流 I _n (A)	弧前时间 I _t @ 1ms (A ² s)	总的 I ² t @ 690 V kA ² s	P _n : 功率损耗 PV 43620 0, 8I _n	额定电压下的分断能力 (kA)
690 V	16	gRB	63				
		gRB	80				
		gRB	100				
		gRB	125				
		gRB	160				
		gRB	200				
		gRB	250				
		gRB	315				
690 V	2	gRB	350				
		gRB	160				
		gRB	200				
		gRB	250				
		gRB	315				
		gRB	350				
		gRB	400				
690 V	3	gRB	450				
		gRB	500				
		gRB	315				
		gRB	350				
		gRB	400				
		gRB	450				
		gRB	500				
		gRB	560				
gRB	630						
gRB	700						
gRB	800						

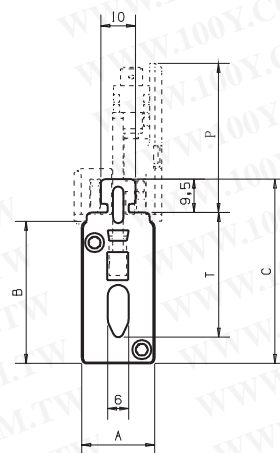
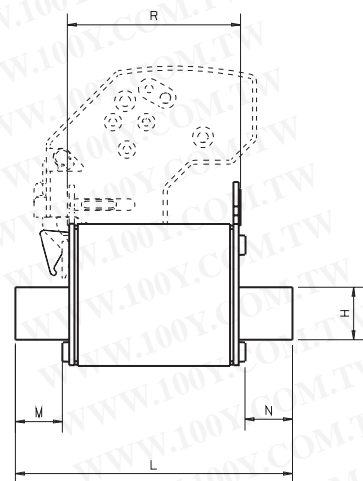
请联系我们

Protistor® 方体熔断器

NH平刀型熔断器 - 690 VAC

gR - 690 VAC 尺寸 000 至 3 (全范围保护)

尺寸	标识	参考号码	编目号码	重量	个/包
000	6,9 gRB 000 PV 0016	N322035	NH000GB69V16PV	135	3
	6,9 gRB 000 PV 0020	Q322037	NH000GB69V20PV		
	6,9 gRB 000 PV 0025	S322039	NH000GB69V25PV		
	6,9 gRB 000 PV 0032	X322043	NH000GB69V32PV		
	6,9 gRB 000 PV 0040	B322047	NH000GB69V40PV		
	6,9 gRB 000 PV 0050	F322051	NH000GB69V50PV		
	6,9 gRB 000 PV 0063	K322055	NH000GB69V63PV		
	6,9 gRB 000 PV 0080	P322059	NH000GB69V80PV		
	6,9 gRB 000 PV 0100	T322063	NH000GB69V100PV		
	6,9 gRB 000 PV 0125	W322065	NH000GB69V125PV		
	中性点	Z218269	NH00中性点		10
	提拉手柄	P215592	NH手柄		1
00	6,9 gRB 00 PV 0020	Z322137	NH00GB69V20PV	200	3
	6,9 gRB 00 PV 0025	B322139	NH00GB69V25PV		
	6,9 gRB 00 PV 0032	F322143	NH00GB69V32PV		
	6,9 gRB 00 PV 0040	K322147	NH00GB69V40PV		
	6,9 gRB 00 PV 0050	P322151	NH00GB69V50PV		
	6,9 gRB 00 PV 0063	T322155	NH00GB69V63PV		
	6,9 gRB 00 PV 0080	Y322159	NH00GB69V80PV		
	6,9 gRB 00 PV 0100	C322163	NH00GB69V100PV		
	6,9 gRB 00 PV 0125	E322165	NH00GB69V125PV		
	6,9 gRB 00 PV 0160	J322169	NH00GB69V160PV		
6,9 gRB 00 PV 0200	L322171	NH00GB69V200PV			
	中性点	Z218269	NH00中性点		10
	提拉手柄	P215592	NH手柄		1
0	6,9 gRB 0 PV 0032	P322243	NH0GB69V32PV	250	3
	6,9 gRB 0 PV 0040	T322247	NH0GB69V40PV		
	6,9 gRB 0 PV 0050	Y322251	NH0GB69V50PV		
	6,9 gRB 0 PV 0063	C322255	NH0GB69V63PV		
	6,9 gRB 0 PV 0080	G322259	NH0GB69V80PV		
	6,9 gRB 0 PV 0100	L322263	NH0GB69V100PV		
	6,9 gRB 0 PV 0125	N322265	NH0GB69V125PV		
	6,9 gRB 0 PV 0160	S322269	NH0GB69V160PV		
	6,9 gRB 0 PV 0200	V322271	NH0GB69V200PV		
	6,9 gRB 0 PV 0250	Z322275	NH0GB69V250PV		
	中性点	Z219304	NH0中性点		10
	提拉手柄	P215592	NH手柄		1



微动开关

MS 4L 2-5 B6 + PRES F210156 (6, 3mm 夹座)
 MS 4L 2-5 B2 + PRES G210157 (2, 8mm 夹座)

该类微动开关可以根据熔断器的动作状态及安装情况适时的发出指示信号，并可以自动复位。
 在安装不当或者熔断器熔断的情况下，端子1-4闭合，微动开关动作。

微动开关可以单独供货

尺寸	A	B	C	H	L	M	N	P	R	T
000	20,8	40,5	52,5	15	79	13,5	13,5	43,4	49,5	35
	0.82"	1.59"	2.07"	0.59"	3.11"	0.53"	0.53"	1.71"	1.95"	1.38"
00	29,5	47,5	59,5	15	79	13,1	13,1	43,4	50	35
	1.16"	1.87"	2.34"	0.59"	3.11"	0.52"	0.52"	1.71"	1.97"	1.38"
0	29,5	47,5	59,5	15	125	29,1	29,1	43,4	66	35
	1.16"	1.87"	2.34"	0.59"	4.92"	1.15"	1.15"	1.71"	2.60"	1.38"

关于熔断器底座的选型方案，请参阅“熔断器底座及其相关附件”部分。

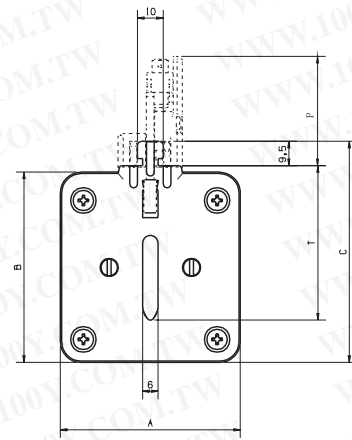
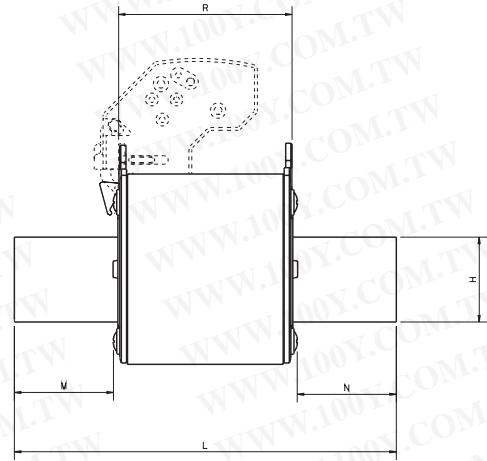


Protistor® 方体熔断器

NH平刀型熔断器 - 690 VAC

gR - 690 VAC 尺寸 000 至 3 (全范围保护)

尺寸	标识	参考号码	编目号码	重量	个/包		
1	6,9 gRB 1 PV 0063	L322355	NH1GB69V63VP	430	3		
	6,9 gRB 1 PV 0080	J322399	NH1GB69V80PV				
	6,9 gRB 1 PV 0100	V322363	NH1GB69V100PV				
	6,9 gRB 1 PV 0125	X322365	NH1GB69V125PV				
	6,9 gRB 1 PV 0160	B322369	NH1GB69V160PV				
	6,9 gRB 1 PV 0200	D322371	NH1GB69V200PV				
	6,9 gRB 1 PV 0250	H322375	NH1GB69V250PV				
	6,9 gRB 1 PV 0315	M322379	NH1GB69V315PV				
	6,9 gRB 1 PV 0350	N322380	NH1GB69V350PV				
	中性点	A219834	NH1中性点			10	
提拉手柄	P215592	NH手柄	1				
2	6,9 gRB 2 PV 0160	K322469	NH2GB69V160PV	600	3		
	6,9 gRB 2 PV 0200	M322471	NH2GB69V200PV				
	6,9 gRB 2 PV 0250	R322475	NH2GB69V250PV				
	6,9 gRB 2 PV 0315	W322479	NH2GB69V315PV				
	6,9 gRB 2 PV 0350	X322480	NH2GB69V350PV				
	6,9 gRB 2 PV 0400	A322483	NH2GB69V400PV				
	6,9 gRB 2 PV 0450	C322485	NH2GB69V450PV				
	6,9 gRB 2 PV 0500	E322487	NH2GB69V500PV				
	中性点	N222514	NH2中性点			10	
	提拉手柄	P215592	NH手柄			1	
3	6,9 gRB 3 PV 0315	E322579	NH3GB69V315PV	750	3		
	6,9 gRB 3 PV 0350	F322580	NH3GB69V350PV				
	6,9 gRB 3 PV 0400	J322583	NH3GB69V400PV				
	6,9 gRB 3 PV 0450	L322585	NH3GB69V450PV				
	6,9 gRB 3 PV 0500	N322587	NH3GB69V500PV				
	6,9 gRB 3 PV 0550	P322588	NH3GB69V550PV				
	6,9 gRB 3 PV 0630	Q322589	NH3GB69V630PV				
	6,9 gRB 3 PV 0700	R322590	NH3GB69V700PV				
	6,9 gRB 3 PV 0850	S322591	NH3GB69V850PV				
	中性点	E223035	NH3中性点			10	
提拉手柄	P215592	NH手柄	1				



微动开关

MS 4L 2-5 B6 + PRES

F210156

(6, 3mm 夹座)

MS 4L 2-5 B2 + PRES

G210157

(2, 8mm 夹座)

该类微动开关可以根据熔断器的动作状态及安装情况适时的发出指示信号，并可以自动复位。在安装不当或者熔断器熔断的情况下，端子1-4闭合，微动开关动作。

微动开关可以单独供货

尺寸	A	B	C	H	L	M	N	P	R	T
1	39,5	52,5	64,5	20	135	32,1	32,1	43,4	68	40
	1.56"	2.07"	2.54"	0.79"	5.32"	1.26"	1.26"	1.71"	2.68"	1.57"
2	51	60	72	26	150	38,85	38,85	43,4	68	48
	2.01"	2.36"	2.85"	1.02"	5.91"	1.53"	1.53"	1.71"	2.68"	1.89"
3	70	74	86	33	150	38,85	38,85	43,4	68	60
	2.76"	2.91"	3.39"	1.30"	5.91"	1.53"	1.53"	1.71"	2.68"	2.36"

关于熔断器底座的选型方案，请参阅“熔断器底座及其相关附件”部分。

Protistor® 方体熔断器 NH平刀型熔断器 - 690 VAC gR - 690 VAC 尺寸 000 至 3

熔断器底座及开关连接装置



未保护的熔断器底座



带指触安全功能的熔断器底座



开关连接装置



熔断型开关连接装置
(带快速动作手柄)

类型	特性	电极数	尺寸 000/00	尺寸 0	尺寸 1	尺寸	尺寸 3
熔断器底座	无保护型 (4) 螺栓连接 与螺孔及母排端子配合使用	1	R216192	T218241	A223008	E211075	X213644
		2	F218758	G218759	G200796	V211595	B214154
		3	V219277	W219278	Y201340	D212109	F214664
		4	Z223007	H222486	H201855	R212627	K215174
	无保护型 (4) 螺栓连接 与螺孔及母排端子配合使用 安装在相应的面板上 ⁴	1	F215170	N216695	E218757	F201853	W213643
		2	A217212	B217213	F222484	S211593	D214662
		3	F217723	G217724	Y223006	B212107	H215172
		4	S219275	R218239	X201339	C213143	L215681
	指触安全型 螺栓连接 与螺孔及母排端子配合使用 与DIN型导轨配合使用	1	S218240	G226717	P226724	R226726	T226728
		3	G222485	J226719A	Q226725	S226727	V226729
开关连接装置	水平式 Linocur AC23	1	N216626 N222882				
		2	B218685 C201781				
		3	Y212035 W213574				
熔断型 开关连接装置 (带前置手柄)	ITCP 160I ⁽¹⁾	3	F210409				
	ITC 63 III已配齐 ⁽⁵⁾	3	G210824				
	ITC 160 III已配齐 ⁽⁵⁾	3	K227824				
	ITC 250 III已配齐 ⁽⁵⁾	3		N210830 + Y210770 ⁽³⁾			
	ITC 400 III已配齐 ⁽⁵⁾	3			Q210832 + Y210770 ⁽³⁾		
	ITC 630 III已配齐 ⁽⁵⁾	3					P210831 + Y210770 ⁽³⁾ W229674 + Y210770 ⁽³⁾

- (1) 无法使用微动开关
- (2) 对于内部/外部控制而言, 如果Y210770A未被使用, 则装置的工作曲线必须是非连续的。
- (3) 有必要使用微动开关 (F210156C 或者 G210157C)
- (4) 无法提供在手指意外触碰接触点时的安全保护
- (5) 指触安全型

警告: 对于所有熔断器底座, 请在使用前仔细检查熔断器的最大工作值及熔断器底座的承载极限。



Protistor® 方体熔断器 PSC gR/aR 尺寸000/00

用于PSC/尺寸000/00/NH熔断器的微动开关

勝特力材料 886-3-5753170
勝特力电子(上海) 86-21-34970699
勝特力电子(深圳) 86-755-83298787
[Http://www.100y.com.tw](http://www.100y.com.tw)

该类微动开关适用于下列熔断器:

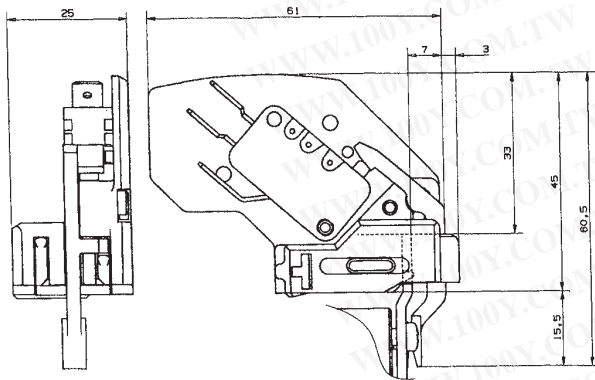
- PSC 尺寸 000/00 (支架型) DIN43653
- NH 熔断器(平刀型), 详细数据请查阅“通用型熔断器(IEC)”部分
- NH 熔断器(平刀型), 690VAC/Protistor方体熔断器



主要电气特性

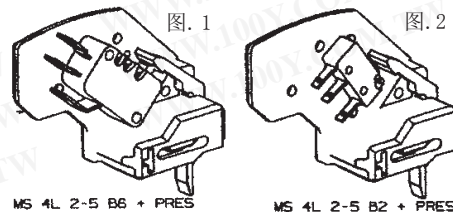
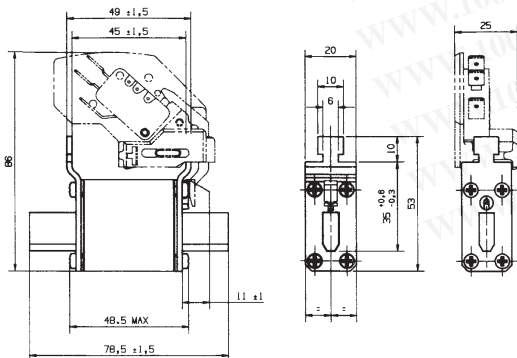
代码	交流绝缘 额定电压 (***)	正向工作 电压/电流	额定电流	频率	分断能力						交流耐受 电压测试 (*)	脉冲电压测试 U _{imp} 1.2/50 μs (**)	耐火等级 根据UL 94
					非电感性电路			电感性电路:L/R=25ms					
					30V	110V	250V	30V	110V	250V			
MS 4L 2-5 B2 + Pres	1000 V	20 V 100 mA	5 A	50 Hz DC	4A -	4A -	5A -	-	5A	5 A	12 kV 8 kV	16 kV 13 kV	V0
MS 4L 2-5 B6 + Pres	1000 V	20 V 50 mA	10 A	50/60 Hz DC	10 A	10 A	10 A	10 A	10 A	10 A	8 kV	10 kV	V0

- * 置于电源电路和微动开关端子之间(根据IEC 60 和 694 以及 NFC 64010 / 50/60 Hz 在干燥的环境下工作周期为一分钟)
- ** 置于电源电路和微动开关端子U_{imp}之间:脉冲电压根据IEC 60947-1
- *** 置于电源电路和微动开关端子之间



规格	参考号码	重量 (g)	个/包	编目号码
MS 4L 2-5 B6 + PRES (图. 1) ⁽¹⁾	F210156	30	3	MS 4L2-5B6PRES
MS 4L 2-5 B2 + PRES (图. 2) ⁽²⁾	G210157	26	3	MS 4L2-5B2PRES

该类微动开关可根据熔断器的动作状态及安装情况适时的发出指示信号, 并可以自动复位。
在安装不当或者熔断器熔断的情况下, 端子1-4闭合, 微动开关动作。



- (1) 6.3 mm 夹座
- (2) 2.8 mm 夹座