




Features

- Very low profile
- Very fast tripping time
- High voltage
- RoHS compliant* and halogen free**
- Symmetrical
- 2018 footprint
- Agency recognition:   

Applications

- Power Over Ethernet (IEEE 802.3 af) port protection
- Automotive electronic control module protection
- Telecom equipment low voltage protection

MF-SMDF Series - PTC Resettable Fuses

Electrical Characteristics

Model	V max. Volts	I max. Amps	I _{hold}	I _{trip}	Resistance		Max. Time To Trip		Tripped Power Dissipation
			Amperes at 23 °C		Ohms at 23 °C		Amperes at 23 °C	Seconds at 23 °C	Watts at 23 °C
			Hold	Trip	R _{Min.}	R _{1Max.}			Typ.
MF-SMDF050	60	10	0.55	1.20	0.200	1.0	2.5	3.0	0.9
MF-SMDF150***	15	40	1.5	3.00	0.05	0.17	8.0	0.8	1.1
MF-SMDF200****	10	40	2.0	4.00	0.03	0.100	8.0	2.40	1.1

*** UL approved, TÜV pending.

**** Agency approval pending.

Environmental Characteristics

Operating Temperature.....	-40 °C to +85 °C
Maximum Device Surface Temperature in Tripped State	125 °C
Passive Aging	+85 °C, 1000 hours..... ±5 % typical resistance change
Humidity Aging	+85 °C, 85 % R.H. 1000 hours..... ±5 % typical resistance change
Thermal Shock	+85 °C to -40 °C, 20 times..... ±10 % typical resistance change
Solvent Resistance.....	MIL-STD-202, Method 215..... No change
Vibration	MIL-STD-883C, Method 2007.1..... No change
.....	Condition A

Test Procedures And Requirements For Model MF-SMDF Series

Test	Test Conditions	Accept/Reject Criteria
Visual/Mech.....	Verify dimensions and materials.....	Per MF physical description
Resistance.....	In still air @ 23 °C.....	R _{min} ≤ R ≤ R _{1max}
Time to Trip.....	At specified current, V _{max} , 23 °C.....	T ≤ max. time to trip (seconds)
Hold Current.....	30 min. at I _{hold}	No trip
Trip Cycle Life.....	V _{max} , I _{max} , 100 cycles.....	No arcing or burning
Trip Endurance.....	V _{max} , 48 hours.....	No arcing or burning
Solderability.....	ANSI/J-STD-002.....	95 % min. coverage
UL File Number	E174545 http://www.ul.com/ Follow link to Certifications, then UL File No., enter E174545	
CSA File Number.....	CA110338 http://directories.csa-international.org/ Under "Certification Record" and "File Number" enter 110338-0-000	
TÜV Certificate Number	R 02057213 http://www.tuvdotcom.com/ Follow link to "other certificates", enter File No. 2057213	

Thermal Derating Chart - I_{hold}/I_{trip} (Amps)

Model	Ambient Operating Temperature								
	-40 °C	-20 °C	0 °C	23 °C	40 °C	50 °C	60 °C	70 °C	85 °C
MF-SMDF050	0.87 / 1.90	0.77 / 1.68	0.67 / 1.46	0.55 / 1.20	0.46 / 1.00	0.41 / 0.89	0.36 / 0.79	0.31 / 0.68	0.23 / 0.50
MF-SMDF150	2.38 / 4.76	2.10 / 4.20	1.82 / 3.64	1.50 / 3.00	1.27 / 2.54	1.13 / 2.26	0.99 / 1.98	0.85 / 1.70	0.64 / 1.28
MF-SMDF200	2.95 / 5.90	2.65 / 5.30	2.35 / 4.70	2.00 / 4.00	1.74 / 3.48	1.59 / 3.18	1.44 / 2.88	1.29 / 2.58	1.06 / 2.12

*RoHS Directive 2002/95/EC Jan 27 2003 including Annex.

**To be considered halogen free, each homogenous material can have a maximum concentration of 900 ppm of either bromine or chlorine.

Specifications are subject to change without notice.

Customers should verify actual device performance in their specific applications.

MF-SMDF Series - PTC Resettable Fuses

BOURNS®

Product Dimensions

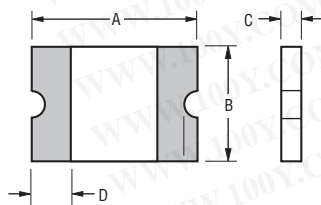
Model	A		B		C		D
	Min.	Max.	Min.	Max.	Min.	Max.	Min.
MF-SMDF050	$\frac{4.72}{(0.186)}$	$\frac{5.44}{(0.214)}$	$\frac{4.22}{(0.166)}$	$\frac{4.93}{(0.194)}$	$\frac{0.79}{(0.031)}$	$\frac{1.09}{(0.043)}$	$\frac{0.30}{(0.012)}$
MF-SMDF150	$\frac{4.72}{(0.186)}$	$\frac{5.44}{(0.214)}$	$\frac{4.22}{(0.166)}$	$\frac{4.93}{(0.194)}$	$\frac{0.55}{(0.022)}$	$\frac{0.85}{(0.033)}$	$\frac{0.30}{(0.012)}$
MF-SMDF200	$\frac{4.72}{(0.186)}$	$\frac{5.44}{(0.214)}$	$\frac{4.22}{(0.166)}$	$\frac{4.93}{(0.194)}$	$\frac{0.55}{(0.022)}$	$\frac{0.85}{(0.033)}$	$\frac{0.30}{(0.012)}$

Packaging: 6000 pcs. per reel.

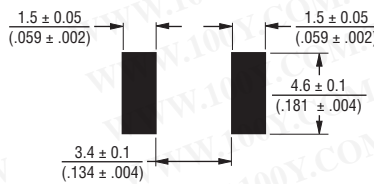
DIMENSIONS: $\frac{\text{MM}}{\text{(INCHES)}}$

Top and Bottom View

Side View



Recommended Pad Layout



Terminal material:

Electroless Ni under immersion Au

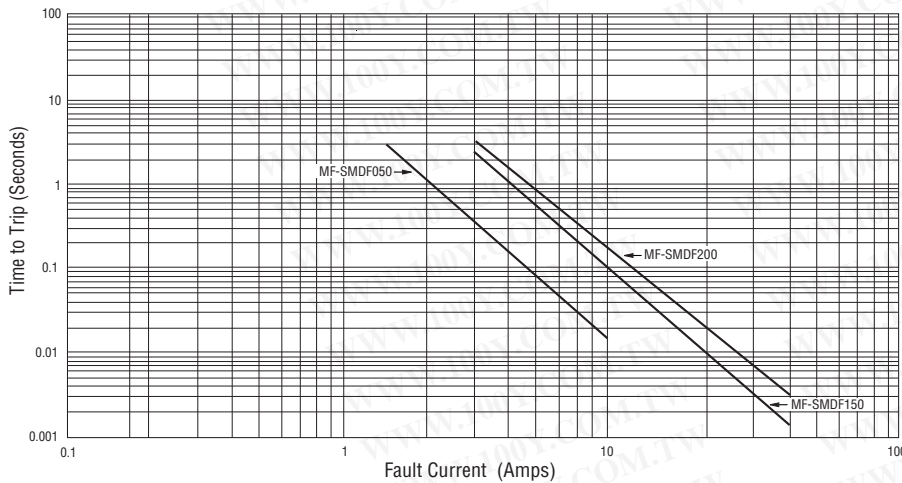
Termination pad solderability:

Standard Au finish:
Meets ANSI/J-STD-002 Category 2.

Recommended Storage:

40 °C max./70 % RH max.

Typical Time to Trip at 23 °C

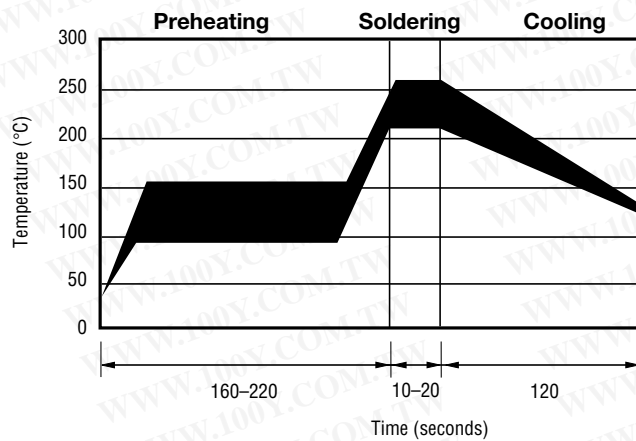


The Time to Trip curves represent typical performance of a device in a simulated application environment. Actual performance in specific customer applications may differ from these values due to the influence of other variables.

MF-SMDF Series - PTC Resettable Fuses

BOURNS®

Solder Reflow Recommendations



Notes:

- MF-SMDF models cannot be wave soldered. Please contact Bourns for hand soldering recommendations.
- If reflow temperatures exceed the recommended profile, devices may not meet the performance requirements.
- Compatible with Pb and Pb-free solder reflow profiles.
- Excess solder may cause a short circuit, especially during hand soldering. Please refer to the [Multifuse® Polymer PTC Soldering Recommendation guidelines](#).

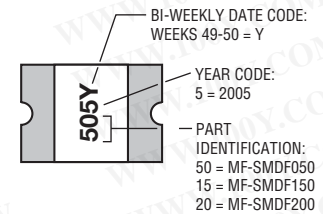
How to Order

MF - SMDF 050 - 2

Multifuse® Product Designator _____
 Series _____
 SMDF = 2018 Surface Mount Component
 Hold Current, Ihold _____
 050, 150, 200 (0.50 - 2.00 Amps)
 Packaging _____
 Packaged per EIA 481-1
 -2 = Tape and Reel

Typical Part Marking

Represents total content. Layout may vary.



MF-SMDF Series Tape and Reel Specifications



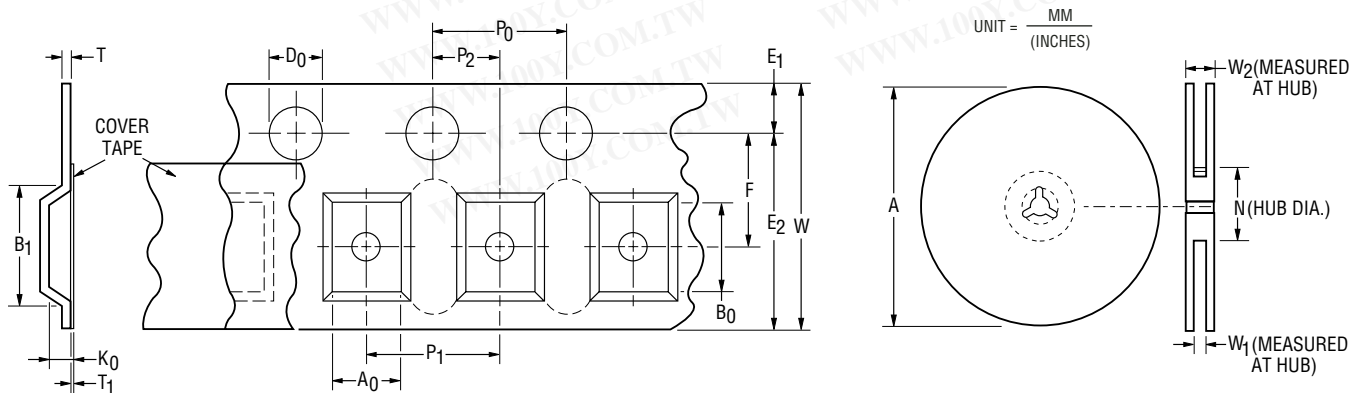
MF-SMDF Series per EIA 481-2

Tape Dimensions

W	16.0 ± 0.3 (0.630 ± 0.012)
P ₀	4.0 ± 0.1 (0.157 ± 0.004)
P ₁	8.0 ± 0.1 (0.315 ± 0.004)
P ₂	2.0 ± 0.1 (0.079 ± 0.004)
A ₀	5.1 ± 0.15 (0.201 ± 0.006)
B ₀	5.6 ± 0.23 (0.220 ± 0.009)
B ₁ max.	12.1 (0.476)
D ₀	$1.5 + 0.1/-0.0$ (0.059 + 0.004/-0)
F	7.5 ± 0.10 (0.295 ± 0.004)
E ₁	1.75 ± 0.10 (0.069 ± 0.004)
E ₂ min.	14.25 (0.561)
T max.	0.6 (0.024)
T ₁ max.	0.1 (0.004)
K ₀	1.0 ± 0.15 (0.039 ± 0.015)
Leader min.	390 (15.35)
Trailer min.	160 (6.30)

Reel Dimensions

A max.	331 (13.03)
N min.	50 (1.97)
W ₁	$16.4 + 2.0/-0.0$ (0.646 + 0.079/-0.0)
W ₂ max.	22.4 (0.882)



Specifications are subject to change without notice.
Customers should verify actual device performance in their specific applications.