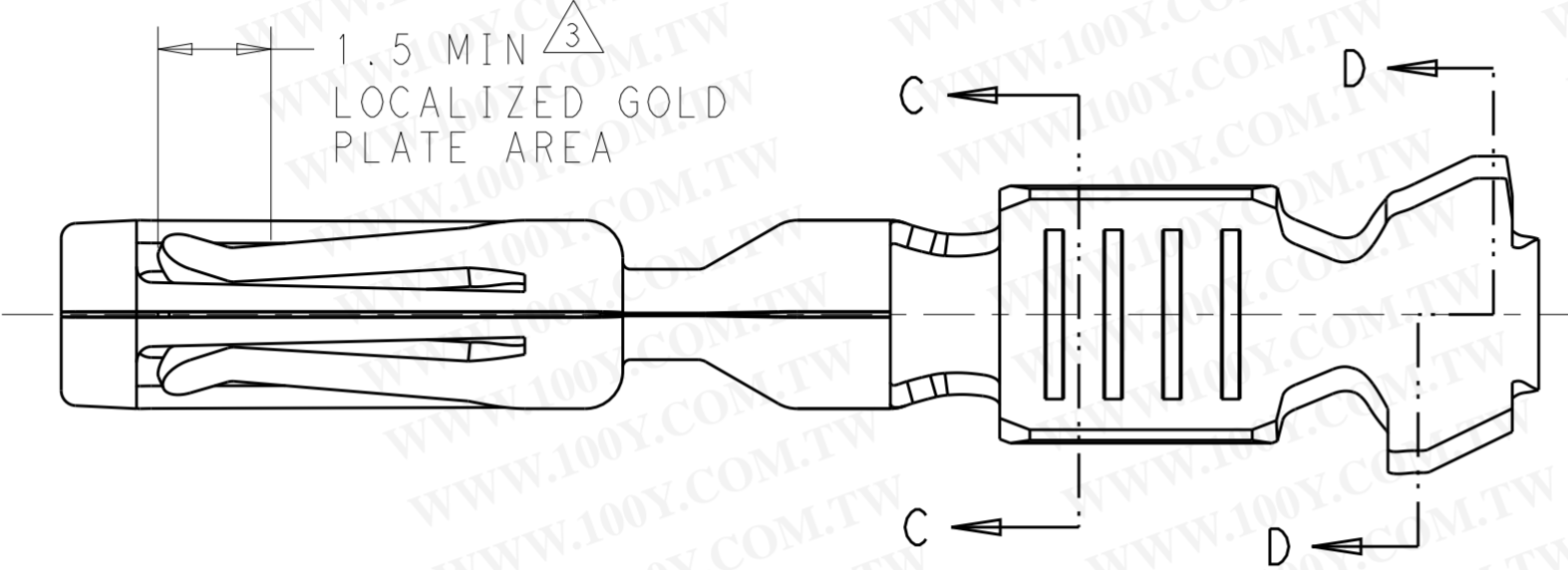
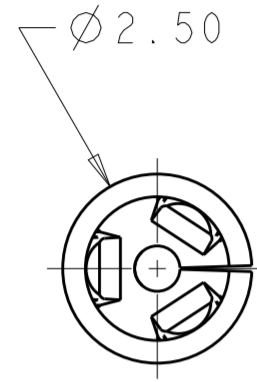


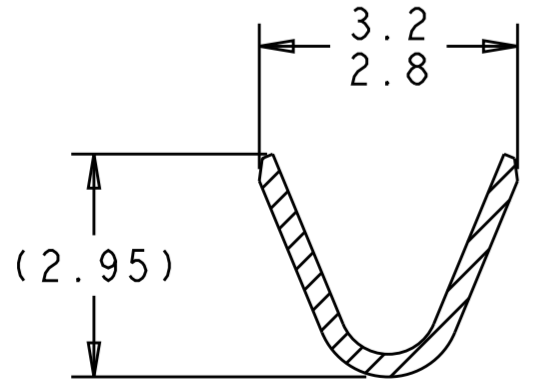
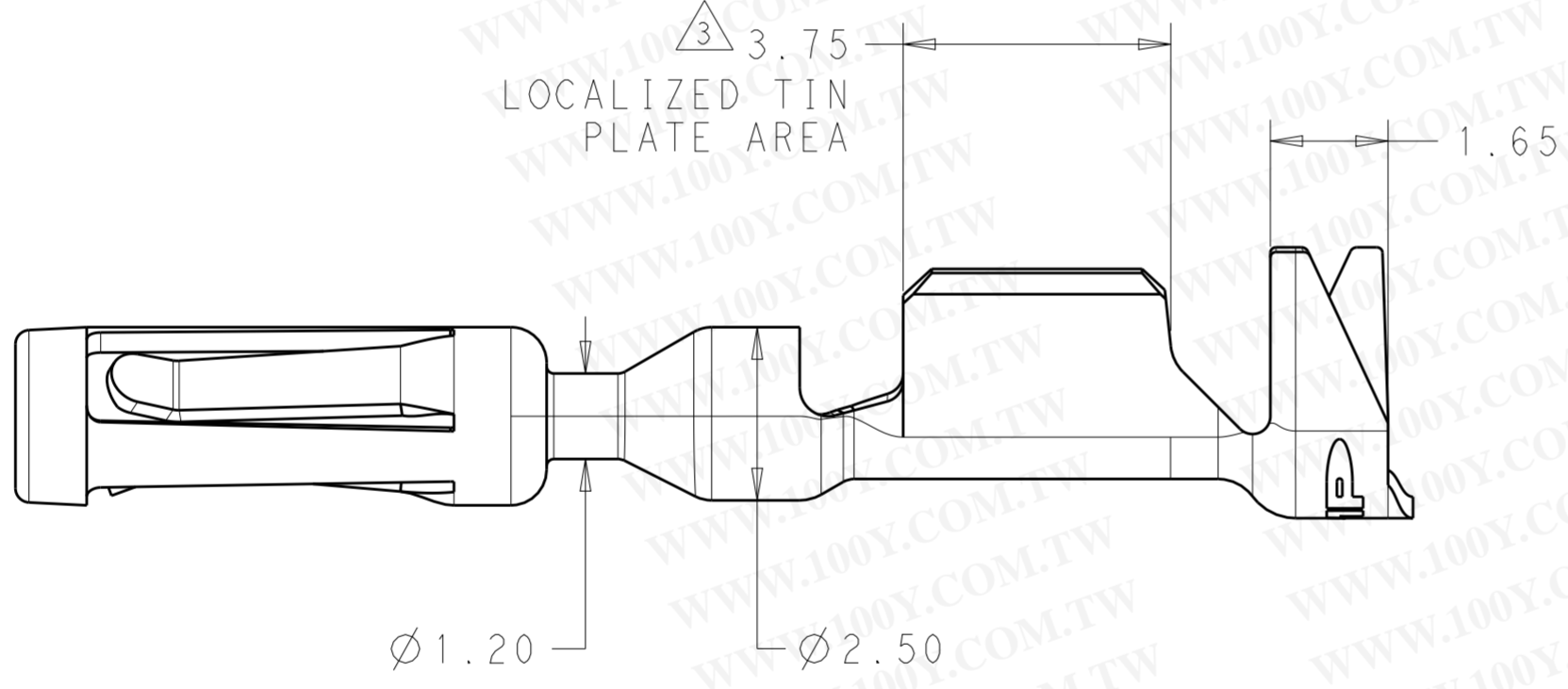
THIS DRAWING IS UNPUBLISHED. RELEASED FOR PUBLICATION 20  
 © COPYRIGHT 20 BY - ALL RIGHTS RESERVED.

LOC	DIST	REVISIONS					
CM	57	P	LTR	DESCRIPTION	DATE	DWN	APVD
		P1		REVISED PER ECO-13-006897	22APR2013	DLD	DCS

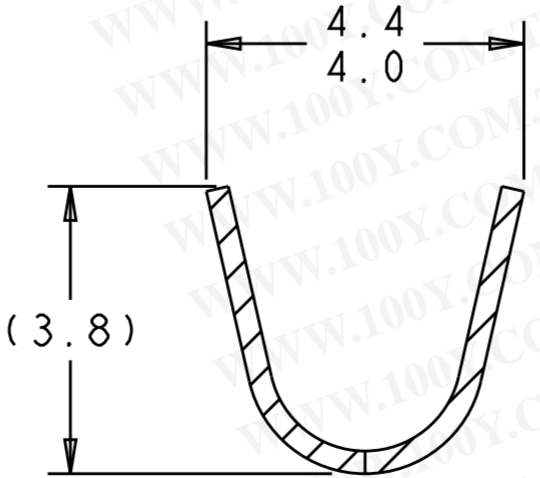


1. WIRE RANGE: 20-16 AWG, 1.0mm<sup>2</sup>, 1.5mm<sup>2</sup>.
2. INSULATION RANGE: 1.70-2.70.
3. .00075 MIN GOLD IN THE LOCALIZED GOLD PLATE AREA, .0025 MIN MATTE TIN IN THE LOCALIZED TIN PLATE AREA OVER .00125 MIN NICKEL OVER ENTIRE CONTACT.
4. USED WITH AMPSEAL PLUG ASSEMBLY: 776286, 776273, 770680, 776164.

**勝特力材料 886-3-5753170**  
**勝特力电子(上海) 86-21-34970699**  
**勝特力电子(深圳) 86-755-83298787**  
[Http://www.100y.com.tw](http://www.100y.com.tw)



SECTION C-C



SECTION D-D

MAKE FROM 770520-3	GOLD $\Delta_3$	0.38 COPPER ALLOY	770854-3
MAKE FROM 770520-1	PRE-TIN	0.38 COPPER ALLOY	770854-1
MADE FROM	FINISH	MATERIAL	PART NUMBER

THIS DRAWING IS A CONTROLLED DOCUMENT.		DWN 22APR2013 D. DRUMMOND	<b>STE</b> TE Connectivity	
DIMENSIONS: mm		CHK 22APR2013 D. STRAUSSER		
TOLERANCES UNLESS OTHERWISE SPECIFIED:		APVD 22APR2013 D. STRAUSSER	NAME CONTACT, AMPSEAL LOOSE PIECE	
0 PLC ±	1 PLC ±	PRODUCT SPEC -	SIZE A200779	CAGE CODE C-770854
2 PLC ±0.15	3 PLC ±	APPLICATION SPEC -	SCALE 10:1	SHEET 1 OF 1
4 PLC ±	ANGLES ±	WEIGHT -	Customer Drawing	REV P1
MATERIAL SEE TABLE		RESTRICTED TO -		