

|    |        |                     |                                |
|----|--------|---------------------|--------------------------------|
| 1  | 151396 | SMA-J+杜邦(M)-0.5M    | SMA 轉杜邦線公-轉接線-SMA 公-杜邦公-0.5M   |
| 2  | 151397 | SMA-J+杜邦(M)-1M      | SMA 轉杜邦線公-轉接線-SMA 公-杜邦公-1M     |
| 3  | 151398 | RP-SMA-J+杜邦(M)-0.5M | SMA 轉杜邦線公-轉接線-SMA 公內孔-杜邦公-0.5M |
| 4  | 151399 | RP-SMA-J+杜邦(M)-1M   | SMA 轉杜邦線公-轉接線-SMA 公內孔-杜邦公-1M   |
| 5  | 151400 | SMA-K+杜邦(M)-0.5M    | SMA 轉杜邦線公-轉接線-SMA 母-杜邦公-0.5M   |
| 6  | 151401 | SMA-K+杜邦(M)-1M      | SMA 轉杜邦線公-轉接線-SMA 母-杜邦公-1M     |
| 7  | 151402 | RP-SMA-K+杜邦(M)-0.5M | SMA 轉杜邦線公-轉接線-SMA 母內針-杜邦公-0.5M |
| 8  | 151403 | RP-SMA-K+杜邦(M)-1M   | SMA 轉杜邦線公-轉接線-SMA 母內針-杜邦公-1M   |
| 9  | 151404 | SMA-JW+杜邦(M)-0.5M   | SMA 轉杜邦線公-轉接線-SMA 彎公-杜邦公-0.5M  |
| 10 | 151405 | SMA-JW+杜邦(M)-1M     | SMA 轉杜邦線公-轉接線-SMA 彎公-杜邦公-1M    |
| 11 | 151406 | SMA-KW+杜邦(M)-0.5M   | SMA 轉杜邦線公-轉接線-SMA 彎母-杜邦公-0.5M  |
| 12 | 151407 | SMA-KW+杜邦(M)-1M     | SMA 轉杜邦線公-轉接線-SMA 彎母-杜邦公-1M    |



SMA公头 转 杜邦公



SMA公头-内孔 转 杜邦公



SMA母头 转 杜邦公

SMA SMB BNC N TNC 转杜邦线杜邦公连接线转接线公头母头延长线



SMA母头-内针 转 杜邦公



SMA弯公 转 杜邦公



SMA弯母 转 杜邦公

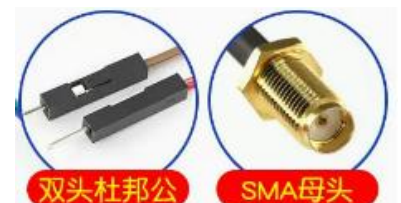


线材型号：RG316(SFF-50-1.5)  
 材 质：纯铜、镀银、耐高温  
 每米衰减：0.145dB/米  
 频 率：0-3GHz  
 阻 抗：50欧姆



双头杜邦公

SMA公头



双头杜邦公

SMA母头

# 产品规格书

This document contains proprietary information and such information may not be disclosed to others for any purposes,  
本文件包含专有信息，不得出于任何目的向他人披露此类信息。  
not used for sales/marketing/procurement purposes without written permission.  
未经书面许可，不得用于销售/营销/采购目的。

## 1. Electrical/电气

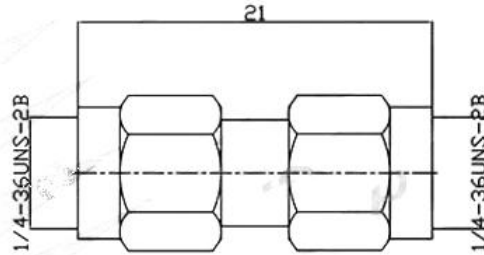
- |   |            |
|---|------------|
| 1.1 Impedance /阻抗                         | 50Ω        |
| 1.2 Frequency /频率                         | DC-6GHz    |
| 1.3 VSWR/驻波                               | ≤1.2       |
| 1.4 Dielectric withstanding voltage /介质耐压 | 1000V(rms) |
| 1.5 Center contact resistance /中心接触电阻     | ≤3MΩ       |
| 1.6 Outer contact resistance /外部接触电阻      | ≤2MΩ       |
| 1.7 Insulation resistance /绝缘电阻           | ≥5000MΩ    |

## 2 Environmenta & Mechanical/环境与机械

- |                           |            |
|---------------------------|------------|
| 2.1 Temperture range/温度范围 | -45°~+125° |
| 2.2 Rohs Compliant/符合RoHS |            |
| 2.3 Durability/耐久性        | 500cycles  |

## 3 Material and Plating/材料和电镀

- |  |  |
|--|--|
| 3.1 Inner Contact/内导体: Phosphorus-Copper Gold Plating/磷铜镀金 |  |
| 3.2 Outer Contact/外导体: Brass, Gold plated/黄铜镀金             |  |
| 3.3 Insulators/绝缘体: PTFE/聚四氟乙烯                             |  |



产品型号P/N: SMA-JJ

# SMA SMB BNC N TNC 轉杜邦線杜邦公連接線轉接線公頭母頭延長線

长度

|      |      |      |      |      |      |    |      |    |    |
|------|------|------|------|------|------|----|------|----|----|
| 0.2m | 0.3m | 0.4m | 0.5m | 0.6m | 0.8m | 1m | 1.2m |    |    |
| 1.5m | 1.8m | 2m   | 3m   | 4m   | 5m   | 6m | 7m   | 8m | 9m |
| 10m  | 11m  | 12m  | 13m  | 14m  |      |    |      |    |    |

|        |                      |                         |
|--------|----------------------|-------------------------|
| 153919 | RP-SMA-JW+杜邦(M)-0.3M | SMA 彎公-內孔 轉杜邦公-轉接線-0.3M |
| 153920 | RP-SMA-JW+杜邦(M)-0.5M | SMA 彎公-內孔 轉杜邦公-轉接線-0.5M |
| 153921 | RP-SMA-KW+杜邦(M)-0.3M | SMA 彎母-內針 轉杜邦公-轉接線-0.3M |
| 153922 | RP-SMA-KW+杜邦(M)-0.5M | SMA 彎母-內針 轉杜邦公-轉接線-0.5M |



SMA彎公-內孔 轉 杜邦公

SMA彎母-內針 轉 杜邦公



线材型号：RG316(SFF-50-1.5)

材 质：纯铜、镀银、耐高温

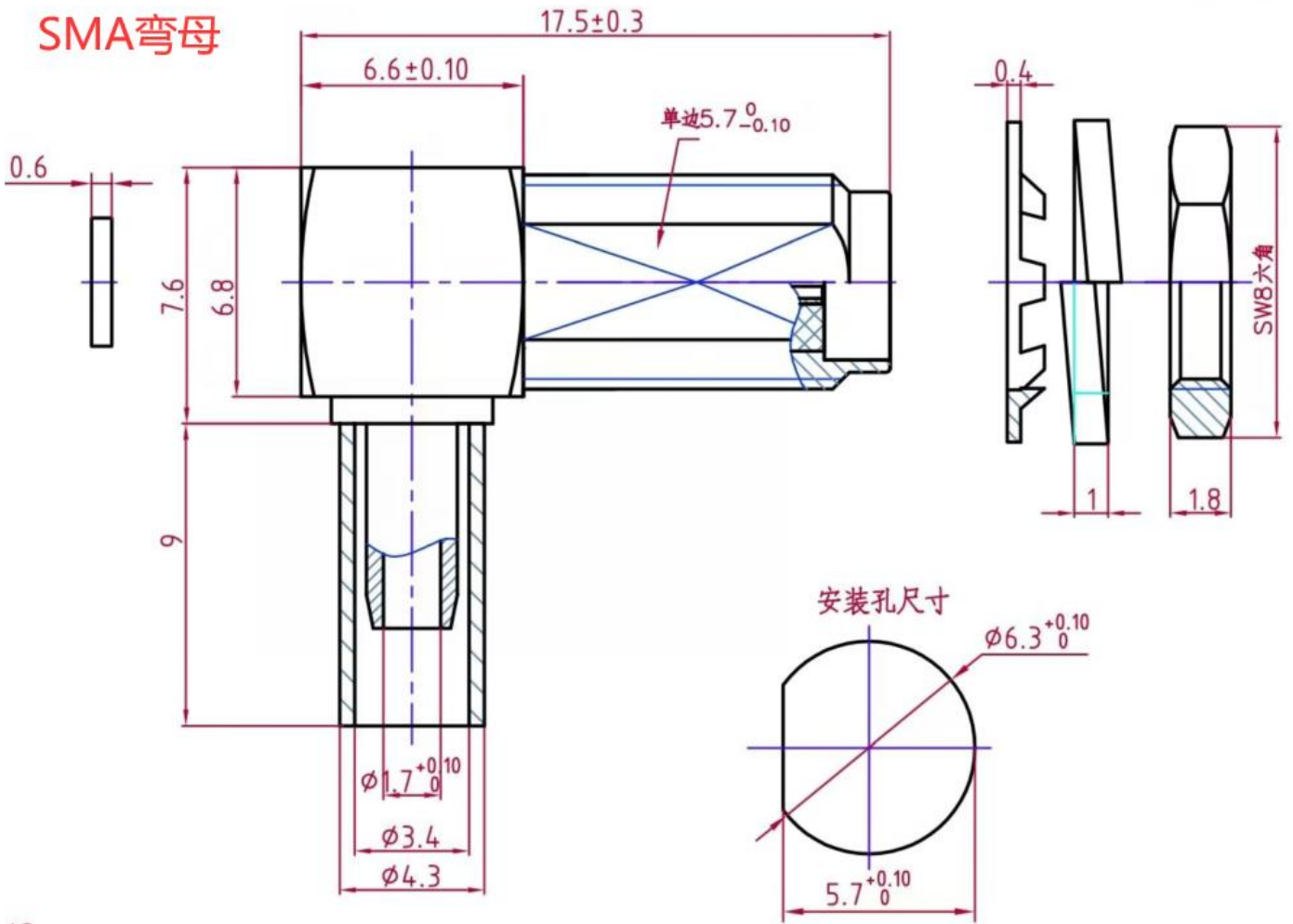
每米衰减：0.145dB/米

频 率：0-3GHz

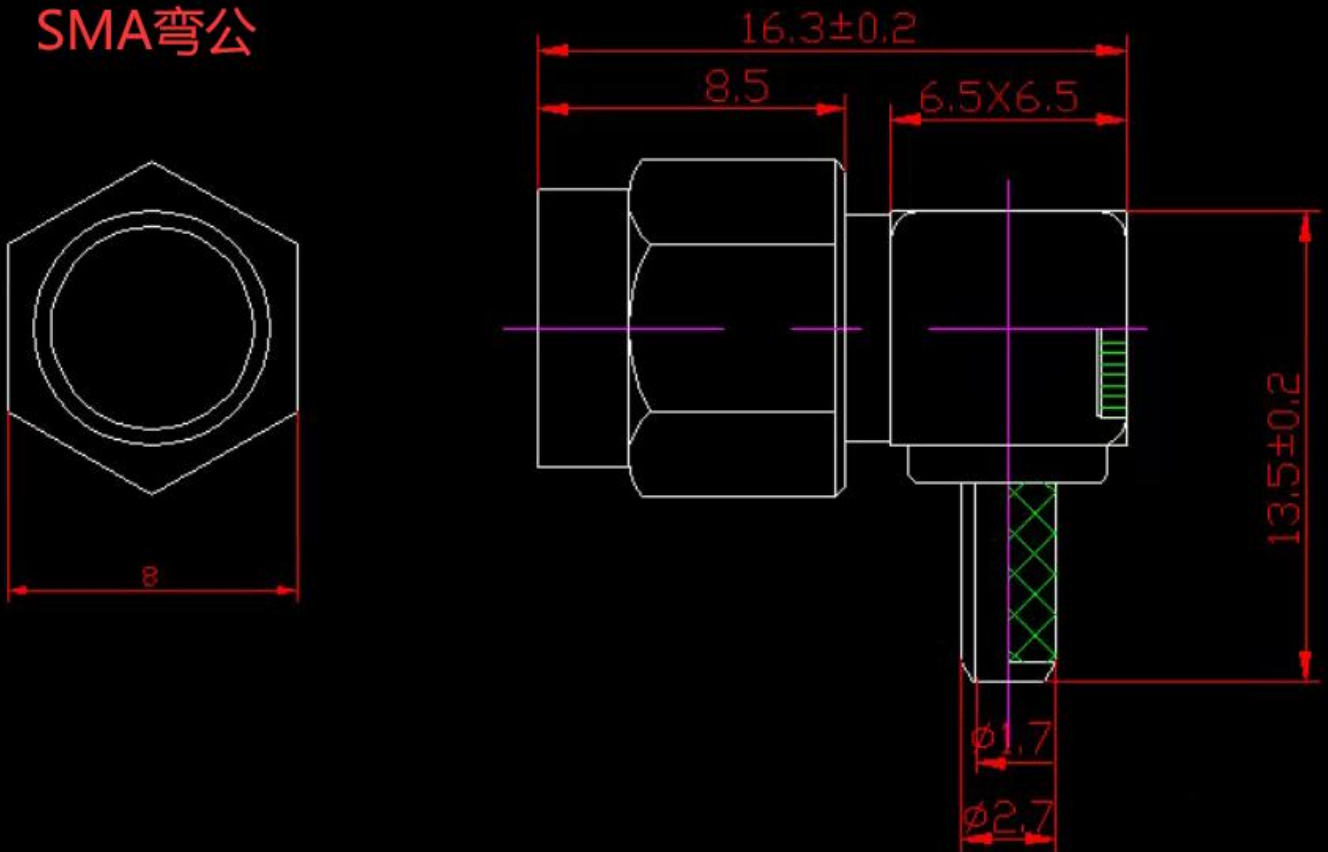
阻 抗：50欧姆



# SMA弯母



# SMA弯公



|  |                               |  |                         |                               |
|--|-------------------------------|--|-------------------------|-------------------------------|
| <b>产品规格 Product Type</b>               |                               | <b>RG316/F/50双银线</b>   |                         |                               |
| <b>结构图 Structure Drawing</b>           |                               |  |                         |                               |
| <b>结构特性 Structure Characteristics</b>  |                               |  |                         |                               |
| <b>结构 Structure</b>                    | <b>项目Item</b>                 | <b>标准值Standard Value</b>   |                         |                               |
| 内导体<br>Inner Conductor                 | 材质Material                    | 镀银铜线Silverplated Copper Wire   |                         |                               |
|  | 结构Construction(mm)            | 7/0.17   |                         |                               |
|  | 标称外径Nom.Dia(mm)               | 0.51±0.02  |                         |                               |
| 绝缘层<br>Insulation                      | 材质Material                    | 聚全氟乙丙烯FEP  |                         |                               |
|  | 标称外径Nom.Dia(mm)               | 1.52±0.05  |                         |                               |
| 外导体<br>Outer Conductor                 | 材质Material                    | 镀银铜线Silverplated Copper Wire 16*5/0.10   |                         |                               |
|  | 标称外径Nom.Dia(mm)               | 1.95±0.10  |                         |                               |
|  | 编织覆盖率Coverage Ratio(%)        | 90±5   |                         |                               |
| 护套<br>Jacket                           | 材质Material                    | 聚全氟乙丙烯FEP  |                         |                               |
|  | 标称外径Nom.Dia(mm)               | 2.50±0.10  |                         |                               |
| <b>电气性能 Electrical Characteristics</b> |                               |  |                         |                               |
| <b>项目Item</b>                          | <b>标准值<br/>Standard Value</b> | <b>项目Item</b>  | <b>频率<br/>Frequency</b> | <b>标准值<br/>Standard Value</b> |
| 阻抗Impedanc (Ω)                         | 50±2                          | 衰减<br>Attenuation@20°C<br>(dB/m)   | 0.1GHz                  | 0.262                         |
| 电容Capacitance(pF/m)                    | 95                            |  | 0.4GHz                  | 0.531                         |
| 速率Velocity(%)                          | 70                            |  | 1GHz                    | 0.860                         |
| 驻波比VSWR                                | ≤1.20@DC-3GHz                 |  | 3GHz                    | 1.650                         |
| 最大工作电压<br>Max.Operating Voltage(V)     | 1200                          |  | 5GHz                    | 2.80                          |
| 最大工作频率<br>Max.Operating Frequency(GHz) | 3                             |  | 6GHz                    | 3.20                          |
| <b>可靠性 Dependability</b>               |                               |  |                         |                               |
| 最小弯曲半径(单次)Min.Bending Radius/Single    | mm                            |  |                         | 15                            |
| 最小弯曲半径(重复) Min.Bending Radius/Repeated | mm                            |  |                         | 50                            |
| 工作温度范围Operating Temperature            | °C                            |  |                         | -55--+200                     |
| <b>包装Packing</b>                       |                               |  |                         |                               |
| 包装方式Packing Mode                       | 纸盘Papery Reel                 |  |                         |                               |
| 包装长度The Length of Each Reel(m)         | 300                           |  |                         |                               |
| 每盘段数The Joints of Each Reel            | ≤3                            |  |                         |                               |
| 最小段长Min. Segment Length(m)             | ≥20                           |  |                         |                               |