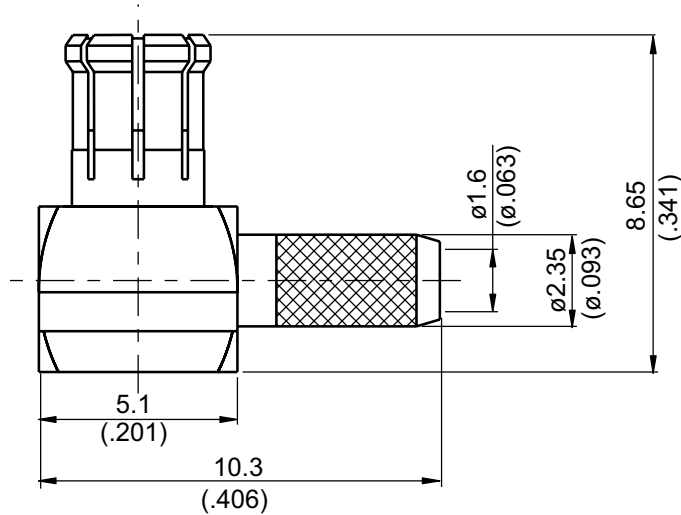


勝特力電材超市-龍山店 886-3-5773766
 勝特力電材超市-光復店 886-3-5729570
 勝特力電子(上海) 86-21-34970699
 勝特力電子(深圳) 86-755-83298787
<http://www.100y.com.tw>

MCX3100-9316

MCX Plug Crimp Right Angle
For RG174, RG188, RG316; 6GHz VSWR 1.2 **50Ω**



Parts	Material	Plating (Micro-inch)
Ferrule	Brass	Gold 4 Over Nickel-Phosphorus Alloy 80 Over Copper 20
Cover	Brass	Gold 4 Over Nickel-Phosphorus Alloy 80 Over Copper 20
Contact Pin	Brass	Gold 4 Over Nickel-Phosphorus Alloy 80 Over Copper 20
Insulator	Teflon	
Body	Phosphor Bronze	Gold 4 Over Nickel-Phosphorus Alloy 80 Over Copper 20

Weight: 1.18 g

Suitable Cables: RG174, RG188, RG316

MCX	MCX3100-9316																		
<div data-bbox="167 347 571 392" style="border: 1px solid black; padding: 2px;">Interface</div> <p data-bbox="167 403 367 436">IEC 61169-36</p>																			
<div data-bbox="167 515 571 560" style="border: 1px solid black; padding: 2px;">Electrical Data</div> <table data-bbox="167 571 1356 985"> <tr> <td>Impedance</td> <td>50Ω</td> </tr> <tr> <td>Frequency range</td> <td>DC to 6GHz</td> </tr> <tr> <td>VSWR</td> <td>≦1.2 (DC to 6GHz)</td> </tr> <tr> <td>Insertion loss</td> <td>≦0.1dB to 1GHz; ≦0.15 to 3GHz</td> </tr> <tr> <td>Insulation resistance</td> <td>≧10000mΩ</td> </tr> <tr> <td>Contact resistance inner conductor</td> <td>≦5mΩ</td> </tr> <tr> <td>Contact resistance outer conductor</td> <td>≦2.5mΩ</td> </tr> <tr> <td>Dielectric withstanding voltage (at sea level)</td> <td>750 V rms</td> </tr> <tr> <td>Working voltage (at sea level)</td> <td>250 V rms</td> </tr> </table>		Impedance	50Ω	Frequency range	DC to 6GHz	VSWR	≦1.2 (DC to 6GHz)	Insertion loss	≦0.1dB to 1GHz; ≦0.15 to 3GHz	Insulation resistance	≧10000mΩ	Contact resistance inner conductor	≦5mΩ	Contact resistance outer conductor	≦2.5mΩ	Dielectric withstanding voltage (at sea level)	750 V rms	Working voltage (at sea level)	250 V rms
Impedance	50Ω																		
Frequency range	DC to 6GHz																		
VSWR	≦1.2 (DC to 6GHz)																		
Insertion loss	≦0.1dB to 1GHz; ≦0.15 to 3GHz																		
Insulation resistance	≧10000mΩ																		
Contact resistance inner conductor	≦5mΩ																		
Contact resistance outer conductor	≦2.5mΩ																		
Dielectric withstanding voltage (at sea level)	750 V rms																		
Working voltage (at sea level)	250 V rms																		
<div data-bbox="167 1064 571 1108" style="border: 1px solid black; padding: 2px;">Mechanical Data</div> <table data-bbox="167 1120 1037 1299"> <tr> <td>Engagement force</td> <td>≦5.6 lbs</td> </tr> <tr> <td>Disengagement force</td> <td>1.8 to 4.5 lbs</td> </tr> <tr> <td>Contact captivation-axial</td> <td>≧2.3 lbs</td> </tr> <tr> <td>Durability (mating)</td> <td>≧500</td> </tr> </table>		Engagement force	≦5.6 lbs	Disengagement force	1.8 to 4.5 lbs	Contact captivation-axial	≧2.3 lbs	Durability (mating)	≧500										
Engagement force	≦5.6 lbs																		
Disengagement force	1.8 to 4.5 lbs																		
Contact captivation-axial	≧2.3 lbs																		
Durability (mating)	≧500																		
<div data-bbox="167 1366 571 1411" style="border: 1px solid black; padding: 2px;">Environmental Data</div> <table data-bbox="167 1422 1420 1657"> <tr> <td>Temperature range</td> <td>-55°C to +155°C</td> </tr> <tr> <td>Thermal shock</td> <td>MIL-STD-202, Method 107, Condition F</td> </tr> <tr> <td>Moisture resistance</td> <td>MIL-STD-202, Method 106</td> </tr> <tr> <td>Corrosion</td> <td>MIL-STD-202, Method 101, Condition B</td> </tr> <tr> <td>RoHS</td> <td>Compliant</td> </tr> </table>		Temperature range	-55°C to +155°C	Thermal shock	MIL-STD-202, Method 107, Condition F	Moisture resistance	MIL-STD-202, Method 106	Corrosion	MIL-STD-202, Method 101, Condition B	RoHS	Compliant								
Temperature range	-55°C to +155°C																		
Thermal shock	MIL-STD-202, Method 107, Condition F																		
Moisture resistance	MIL-STD-202, Method 106																		
Corrosion	MIL-STD-202, Method 101, Condition B																		
RoHS	Compliant																		
<div data-bbox="167 1713 571 1758" style="border: 1px solid black; padding: 2px;">Tooling</div> <table data-bbox="167 1769 1085 1870"> <tr> <td>Crimping tool</td> <td>CRT-1 or CRT-2</td> </tr> <tr> <td>Crimp insert</td> <td>INSERT-A</td> </tr> </table>		Crimping tool	CRT-1 or CRT-2	Crimp insert	INSERT-A														
Crimping tool	CRT-1 or CRT-2																		
Crimp insert	INSERT-A																		

CABLE ASSEMBLY INSTRUCTION

MCX3100-9316	DATE	2017/03/27	REV	—
--------------	------	------------	-----	---

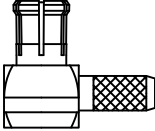
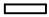



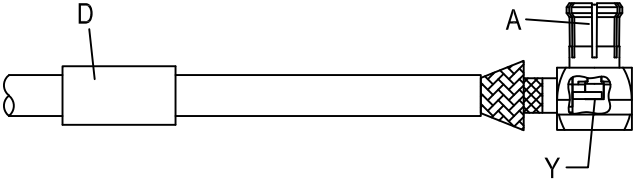
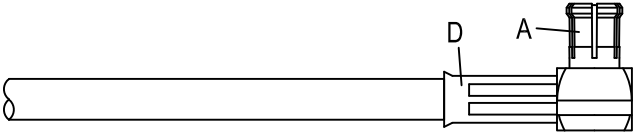
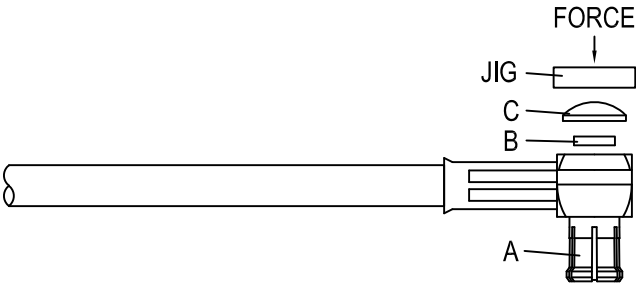
A	B	C	D
			
BODY	INSULATOR	COVER	FERRULE

DIAGRAM	ASSEMBLY INSTRUCTION
---------	----------------------

	<p>Step 1: STRIP AS SHOWN.</p>
--	--------------------------------

	<p>Step 2: SLIDE FERRULE " D " OVER CABLE. Step 3: WRAP THE BRAIDING UPWARDS. Step 4: SLIDE CENTER CONDUCTOR ON THE CONTACT PIN OF CONNECTOR " A " AND SOLDER IN " Y ".</p>
---	---

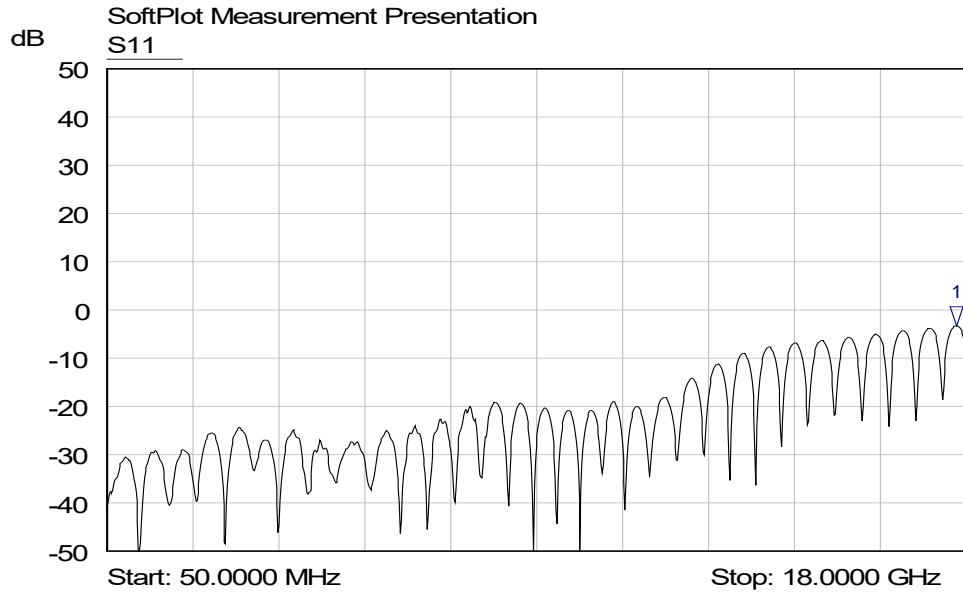
	<p>Step 5: SLIDE FERRULE " D " TOWARDS THE CONNECTOR " A " AND CRIMP. (USE 3.3mm/0.130inch HEX SECTION OF INSERT-A)</p>
---	--

	<p>Step 6: PRESS ON THE TOP OF " C " AND " B " WITH JIGS.</p>
---	---

This part number complies with RoHS.

APPROVED	CHECKED	DRAWING
----------	---------	---------

MCX3100-9316



Mkr	Trace	X-Axis	Value	Notes
1 ▾	S11	17.8003 GHz	-3.29 dB	

勝特力電材超市-龍山店 886-3-5773766
勝特力電材超市-光復店 886-3-5729570
勝特力电子(上海) 86-21-34970699
勝特力电子(深圳) 86-755-83298787
<http://www.100y.com.tw>