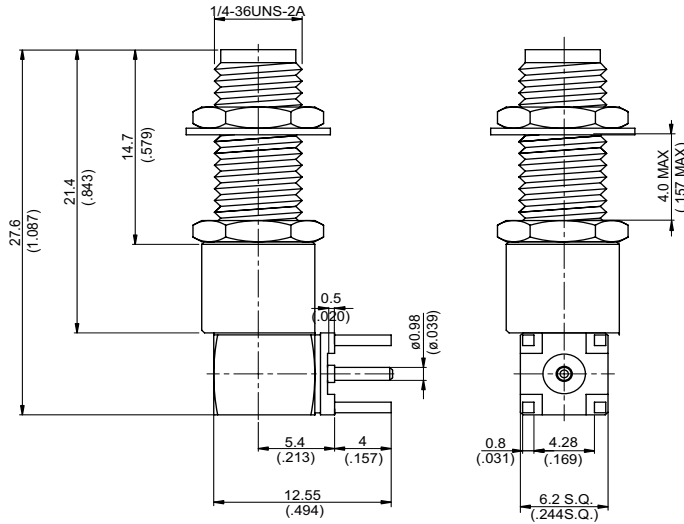


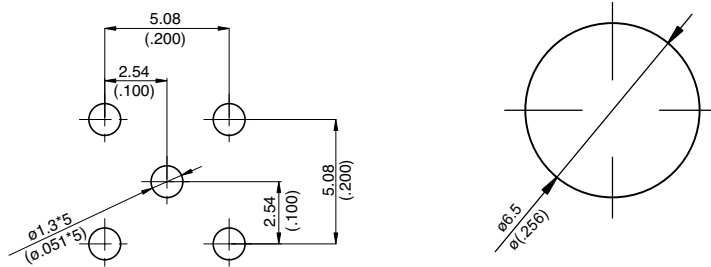
勝特力電材超市-龍山店 886-3-5773766
 勝特力電材超市-光復店 886-3-5729570
 勝特力電子(上海) 86-21-34970699
 勝特力電子(深圳) 86-755-83298787
<http://www.100y.com.tw>

SMA8410A-9000

SMA Jack PCB Mount Bulkhead Right Angle
 With Round Contact ($\Phi 0.98$); 12GHz VSWR 1.2 50 Ω



MOUNTING HOLE :



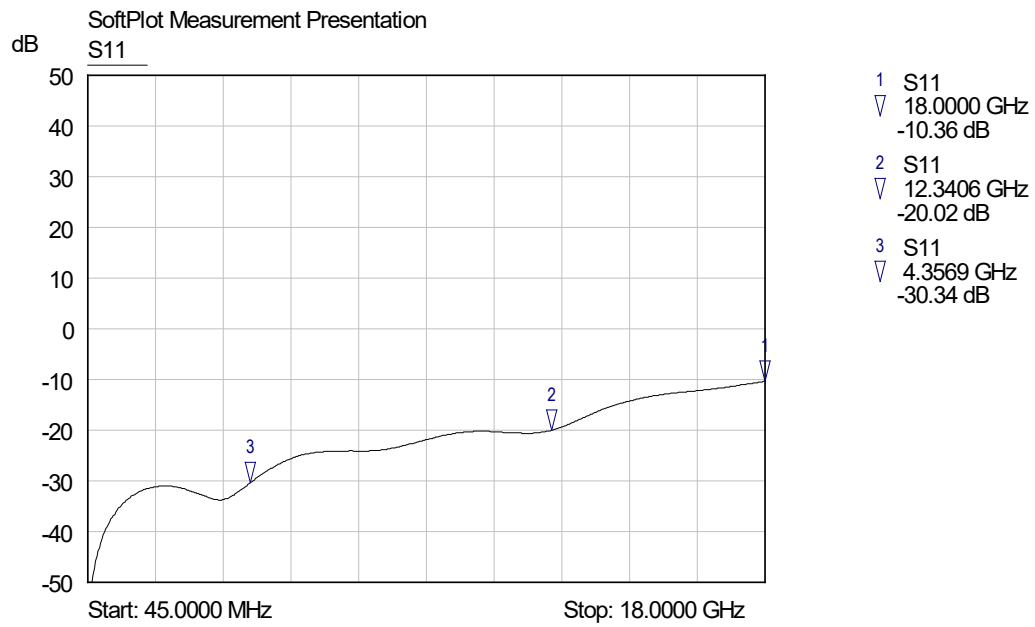
Parts	Material	Plating (Micro-inch)
Contact Body	Brass	Gold 4 Over Nickel-Phosphorus Alloy 80 Over Copper 20
Hex Nut	Brass	Gold 4 Over Nickel-Phosphorus Alloy 80 Over Copper 20
Washer	Brass	Gold 4 Over Nickel-Phosphorus Alloy 80 Over Copper 20
Cover	Brass	Gold 4 Over Nickel-Phosphorus Alloy 80 Over Copper 20
Contact Pin	Beryllium Copper	Gold 4 Over Nickel-Phosphorus Alloy 80 Over Copper 20
Insulator	Teflon	
Body	Brass	Gold 4 Over Nickel-Phosphorus Alloy 80 Over Copper 20

Weight: 5.56 g

SMA	SMA8410A-9000
<div data-bbox="169 383 568 427" style="border: 1px solid black; padding: 2px;">Interface</div> <p data-bbox="169 443 384 477">MIL-STD-348B</p> <p data-bbox="169 490 587 524">Mechanically compatible with</p>	
	2.92 & 3.5
<div data-bbox="169 551 568 595" style="border: 1px solid black; padding: 2px;">Electrical Data</div> <p data-bbox="169 607 328 640">Impedance</p> <p data-bbox="169 654 416 687">Frequency range</p> <p data-bbox="169 701 268 734">VSWR</p> <p data-bbox="169 748 360 781">Insertion loss</p> <p data-bbox="169 795 464 828">Insulation resistance</p> <p data-bbox="169 842 671 875">Contact resistance inner conductor</p> <p data-bbox="169 889 671 922">Contact resistance outer conductor</p> <p data-bbox="169 936 799 969">Dielectric withstanding voltage (at sea level)</p> <p data-bbox="169 983 592 1016">Working voltage (at sea level)</p>	
	<p>50Ω</p> <p>DC to 12GHz</p> <p>≤ 1.2 (DC to 12GHz)</p> <p>≤ 0.04 x √f(GHz) dB</p> <p>≥ 5000MΩ</p> <p>≤ 3mΩ</p> <p>≤ 2mΩ</p> <p>1500 V rms</p> <p>500 V rms</p>
<div data-bbox="169 1093 568 1137" style="border: 1px solid black; padding: 2px;">Mechanical Data</div> <p data-bbox="169 1149 671 1182">Recommended coupling nut torque</p> <p data-bbox="169 1196 480 1229">Coupling proof torque</p> <p data-bbox="169 1243 528 1276">Contact Captivation-axial</p> <p data-bbox="169 1290 432 1323">Durability (mating)</p>	
	<p>4 inch lbs</p> <p>5.3 inch lbs</p> <p>≥ 6.1 lbs</p> <p>≥ 100</p>
<div data-bbox="169 1402 568 1447" style="border: 1px solid black; padding: 2px;">Environmental Data</div> <p data-bbox="169 1458 448 1491">Temperature range</p> <p data-bbox="169 1505 384 1538">Thermal shock</p> <p data-bbox="169 1552 448 1585">Moisture resistance</p> <p data-bbox="169 1599 312 1632">Corrosion</p> <p data-bbox="169 1646 256 1680">RoHS</p>	
	<p>-65°C to +165°C</p> <p>MIL-STD-202, Method 107, Condition B</p> <p>MIL-STD-202, Method 106</p> <p>MIL-STD-202, Method 101, Condition B</p> <p>Compliant</p>
<div data-bbox="169 1753 568 1798" style="border: 1px solid black; padding: 2px;">Tooling</div>	

SMA8410A-9000

S11



勝特力電材超市-龍山店 886-3-5773766
勝特力電材超市-光復店 886-3-5729570
勝特力電子(上海) 86-21-34970699
勝特力電子(深圳) 86-755-83298787
<http://www.100y.com.tw>